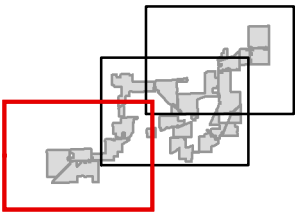


# Heritage Wind Project

Town of Barre, Orleans County, New York

Figure 3-1 Update:  
Proposed Major Electric  
Generating Facility

- Wind Turbine
- Access Road
- Collection Line
- Laydown Yard
- Facility Site
- Town Boundary
- County Boundary

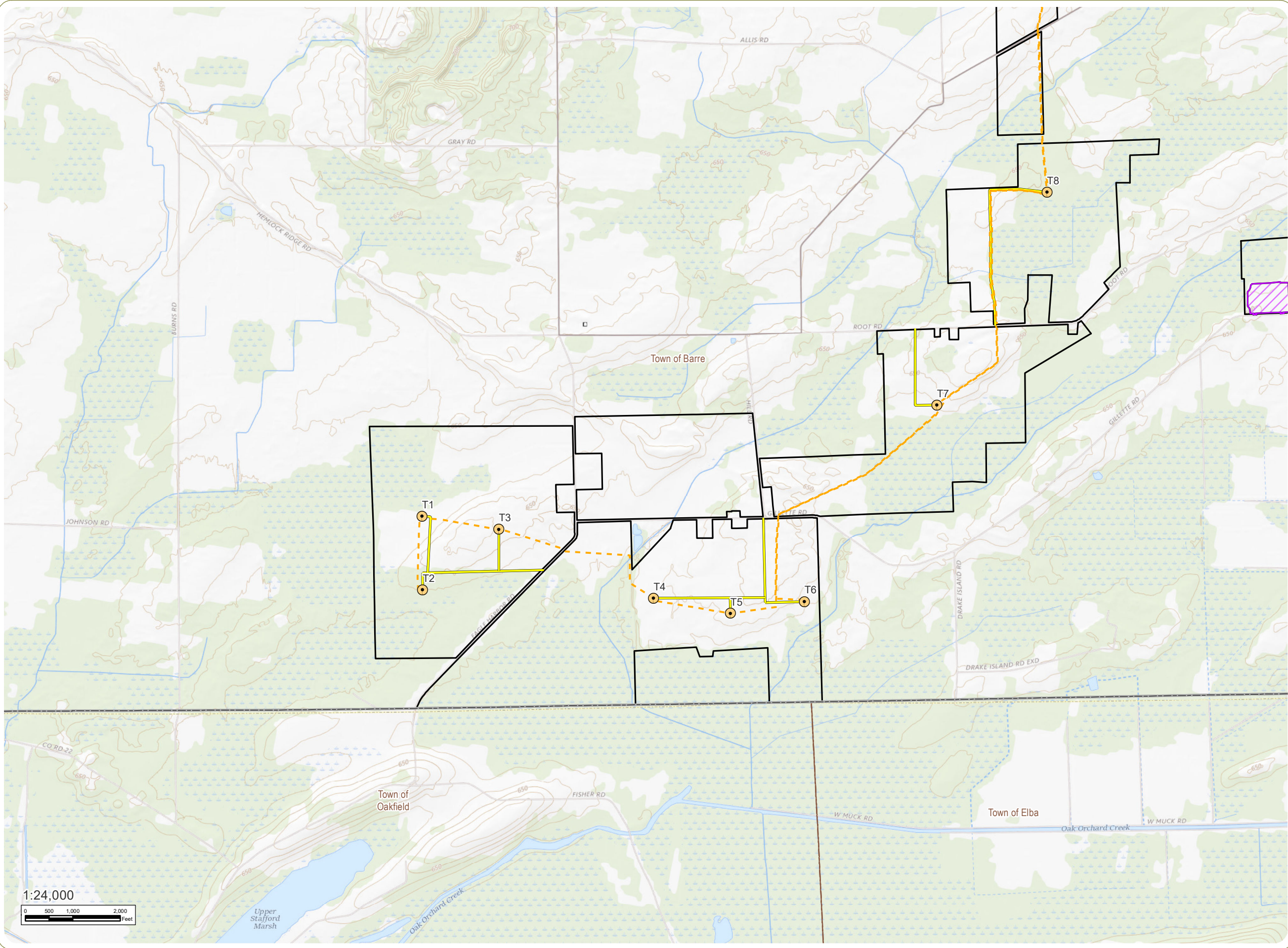


Sheet 1 of 3

Notes: 1. Basemap: "USGS TNM Topo Base Map" displayed via the USGS Topo Map Service. 2. This map was generated in ArcMap on August 31, 2020. 3. This is a color graphic. Reproduction in grayscale may misrepresent the data.



www.edrdpc.com



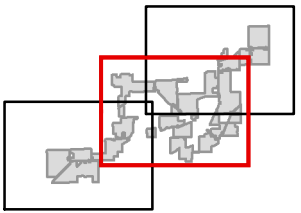


# Heritage Wind Project

Town of Barre, Orleans  
County, New York

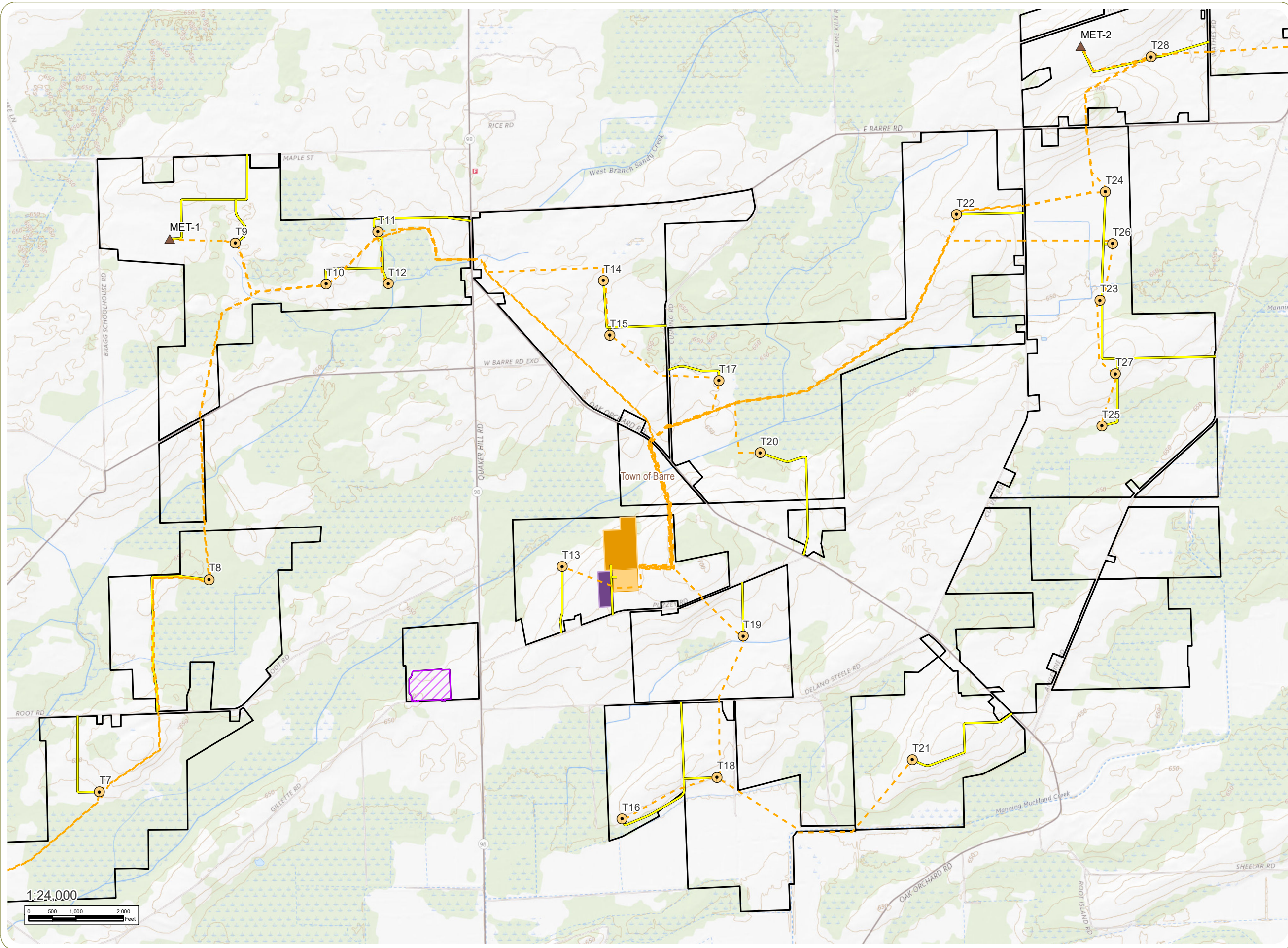
Figure 3-1 Update:  
Proposed Major Electric  
Generating Facility

- Wind Turbine
- Permanent Met Tower
- Access Road
- Collection Line
- POI Substation
- Collection Substation
- O&M Facility
- Laydown Yard
- Facility Site
- Town Boundary
- County Boundary

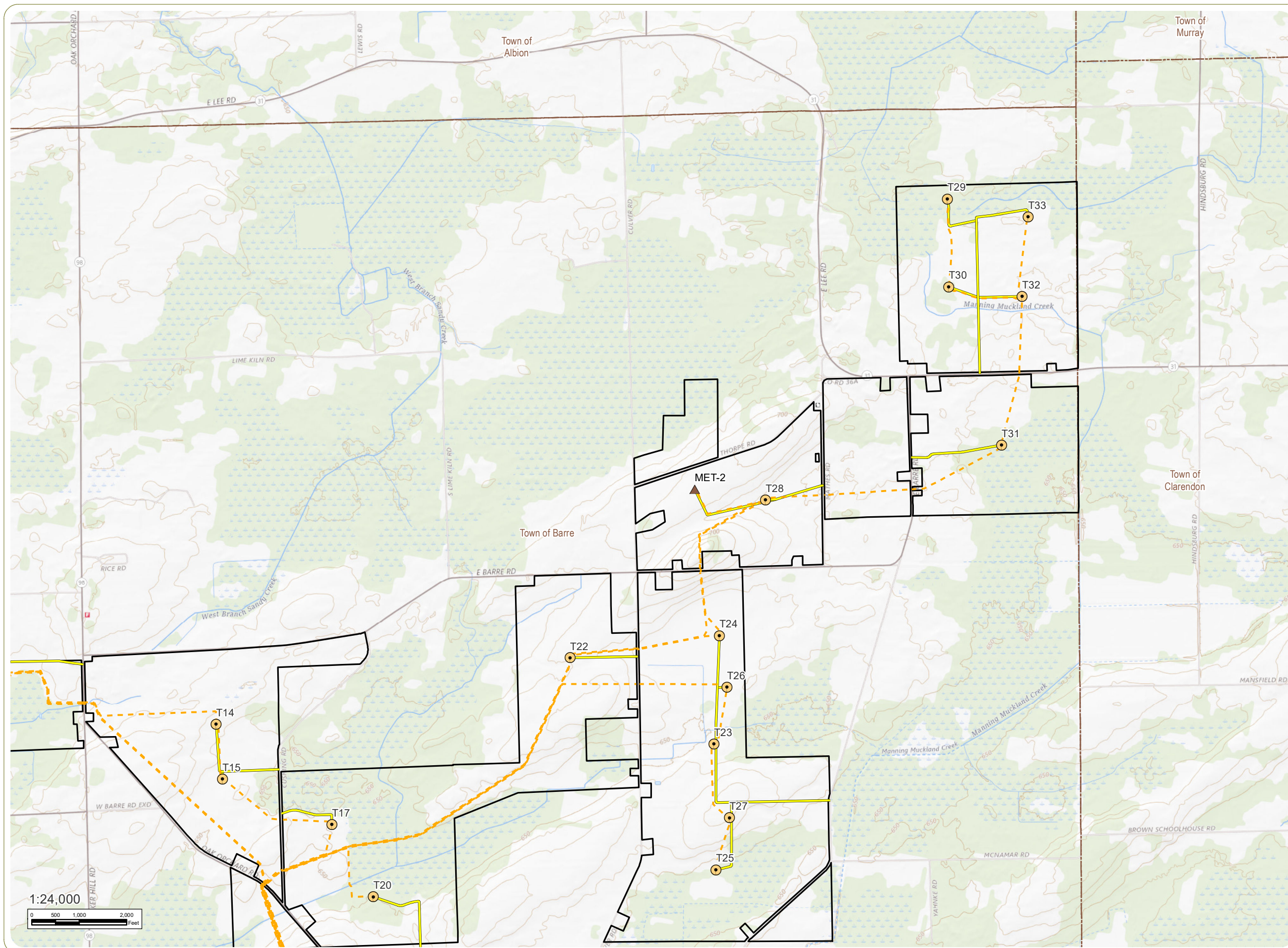


Sheet 2 of 3

Notes: 1. Basemap: "USGS TNM Topo Base Map" displayed via the USGS Topo Map Service. 2. This map was generated in ArcMap on August 31, 2020. 3. This is a color graphic. Reproduction in grayscale may misrepresent the data.





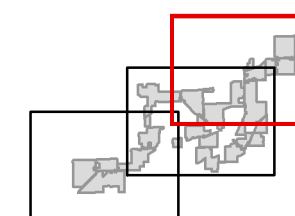


## Heritage Wind Project

Town of Barre, Orleans  
County, New York

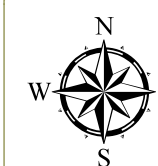
**Figure 3-1 Update:  
Proposed Major Electric  
Generating Facility**

- Wind Turbine
- Permanent Met Tower
- Access Road
- Collection Line
- Facility Site
- Town Boundary
- County Boundary



Sheet 3 of 3

**Notes:** 1. Basemap: "USGS TNM Topo Base Map" displayed via the USGS Topo Map Service. 2. This map was generated in ArcMap on August 31, 2020. 3. This is a color graphic. Reproduction in grayscale may misrepresent the data.



[www.edrpsc.com](http://www.edrpsc.com)