

(Next update due 11/01/2011)

The mission of the ImproveCareNow Collaborative is to develop and test specific changes that will lead to improvement in the care of children with pediatric IBD and determine how best to incorporate these improvements into everyday practice.

Key Measure	Collaborative Target	Advanced Track Teams' Performance 09/11	Team's 90-Day Goal	Team's Performance 09/11
-------------	----------------------	---	--------------------	--------------------------

Clinical Remission

1. Remission Rate	80%	76%		83%
2. Steroid free remission rate	76%	72%		82%
3. Sustained remission rate	45%	58%		63%
4. % of patients off prednisone	95%	92%		94%

Adequate Nutrition and Growth

5. % of patients with satisfactory nutritional status	90%	90%		97%
5a. % of patients at risk of nutritional failure	N/A	9%		1%
5b. % of patients in nutritional failure	N/A	2%		1%
6. % of patients with satisfactory growth status	90%	93%		98%
6a. % of patients at risk of growth failure	N/A	6%		0%
6b. % of patients in growth failure	N/A	1%		2%

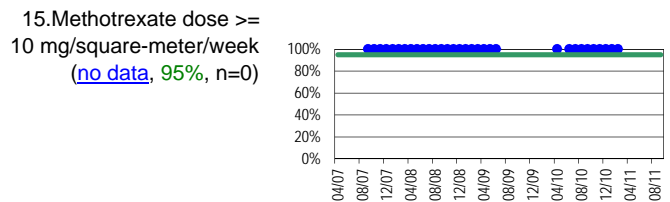
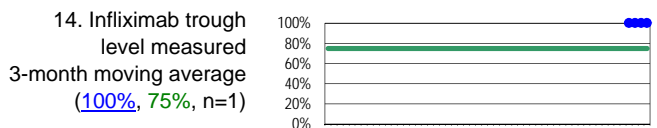
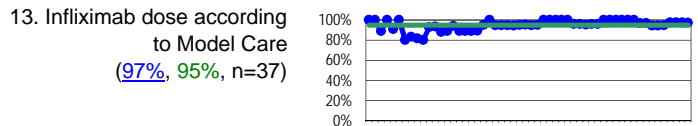
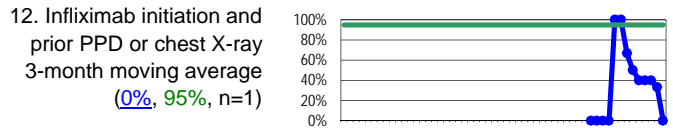
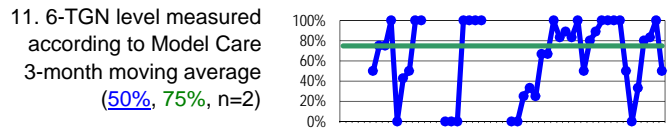
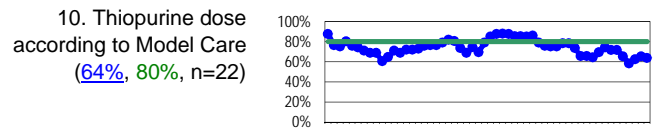
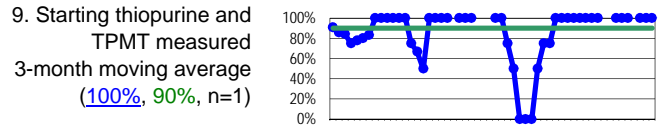
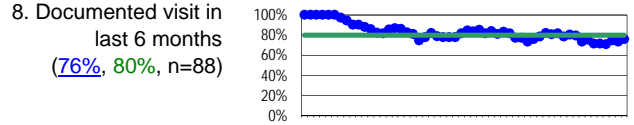
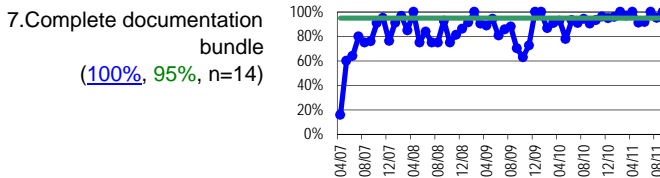
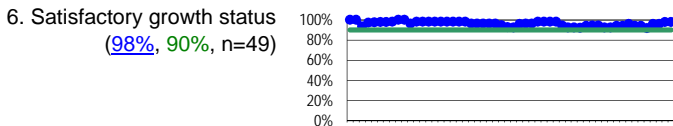
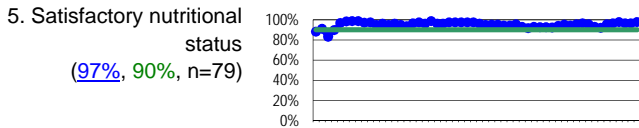
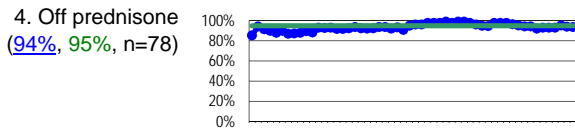
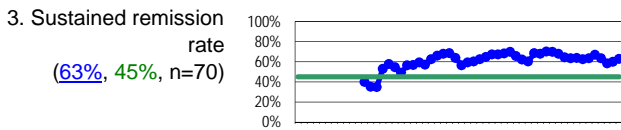
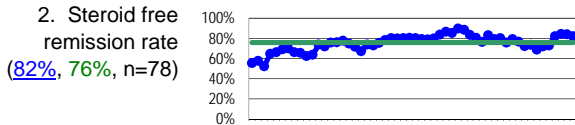
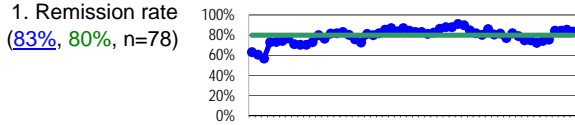
Model Classification

7. % of patient visits with complete classification bundle	95%	91%		100%
--	-----	-----	--	------

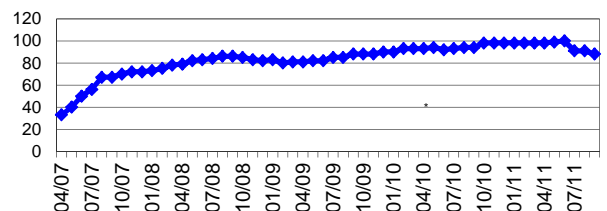
Model Treatment

8. % of patients with a documented visit within the last 6 months	80%	79%		76%
9. % of visits starting treatment with a thiopurine who have had measurement of TPMT (3-month moving average)	90%	40%		100%
10. % of patients with thiopurine dose prescribed according to Model Care	80%	75%		64%
11. % of visits at which 6-TGN level is measured according to Model Care (3-month moving average)	75%	0%		50%
12. % of visits at which patient had initiation dose of infliximab and had prior PPD or chest X-ray (3-month moving average)	95%	77%		0%
13. % of patients where the dose of infliximab is given according to Model Care	95%	94%		97%
14. % of visits where the infliximab trough level of patients treated with infliximab is measured according to Model Care (3-month moving average)	75%	60%		100%
15. % of patients treated with methotrexate where the dose is at least 10 mg/square-meter per week	95%	86%		N/A

Team Performance
([score](#), [goal](#), [n](#))



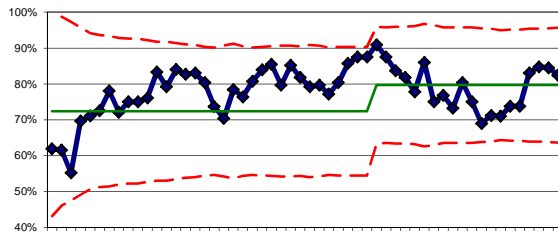
Number of active patients in Clinipace (cumulative)



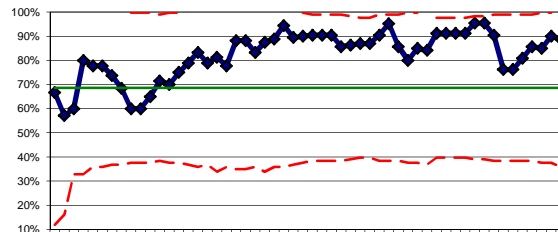
Note: If a measure has "no data" listed, it means there were no patients in the relevant analysis category this month, so no score could be computed.

Team Performance

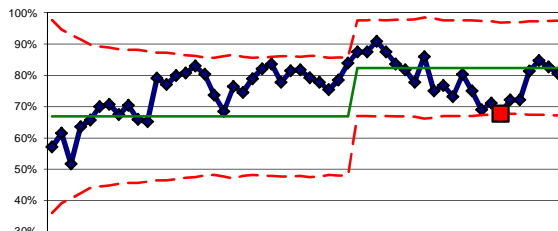
1. Remission Rate - Crohn's Disease



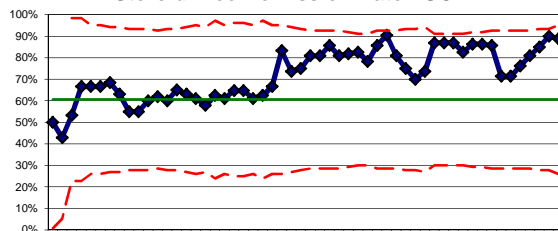
1. Remission Rate - Ulcerative Colitis



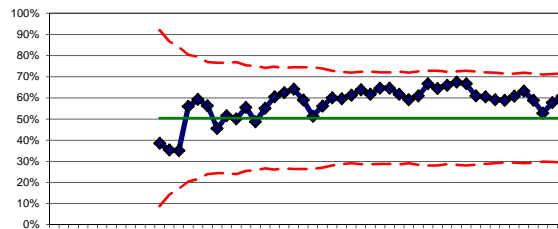
2. Steroid Free Remission Rate - CD



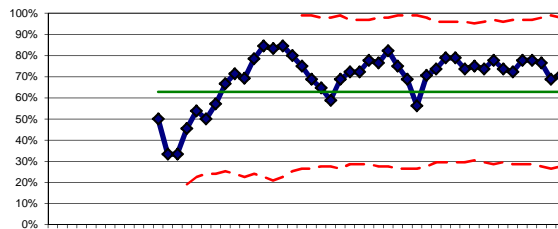
2. Steroid Free Remission Rate - UC



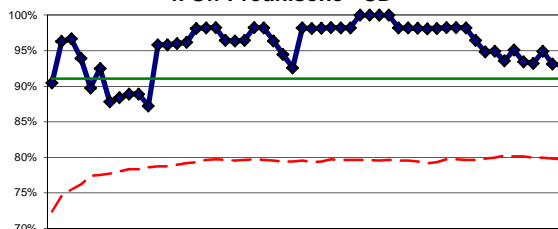
3. Sustained Remission Rate - CD



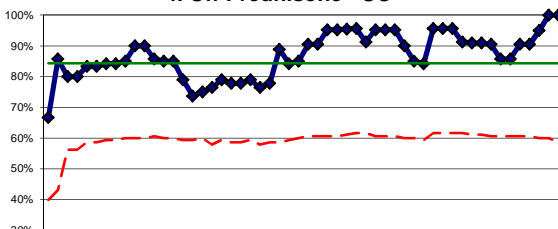
3. Sustained Remission Rate - UC



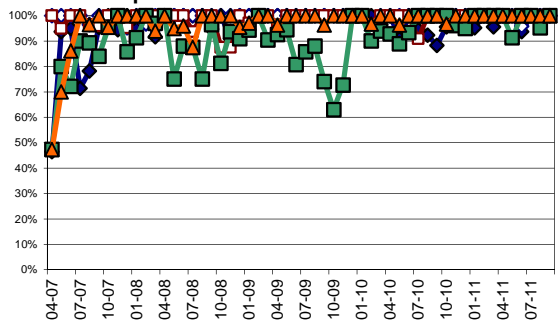
4. Off Prednisone - CD



4. Off Prednisone - UC



7. Components of Classification Bundle



% of Patients by Disease Status (cumulative)

