

***Tree of Life:
Spiritual Meanings of Trees
for Watershed Restoration***



WATER & TREES in the Bible



*That person is like a tree
planted by streams of water,
which yields its fruit in season
and whose leaf does not
wither— whatever they do
prosper. Psalm 1:3*

*You make springs gush forth
in the valleys; they flow
between the hills, giving
drink to every wild animal;
the wild asses quench their
thirst. By the streams the
birds of the air have their
habitation; they sing among
the branches.*

Psalm 104:10-13

*They will be like a tree planted by the water
that sends out its roots by the stream. It does
not fear when heat comes; it's leaves are
always green. It has no worries in a year of
drought and never fails to bear fruit.*

Jeremiah 17:8

TREES in the Bible

*The earth brought forth
vegetation: plants yielding
seed of every kind, and
trees of every kind bearing
fruit with the seed in it.
And God saw that it was
good.* Gen. 1:12

*Out of the ground the Lord God
made to grow every tree that is
pleasant to the sight and good for
food, the tree of life also in the
midst of the garden, and the tree of
the knowledge of good and evil.*
Gen. 2:9

...be rooted and grounded in love.
Ephes. 3:17



... on either side of the river, the tree of
life with its twelve kinds of fruit,
yielding its fruit each month. The leaves
of the tree were for the healing of the
nations.

Rev. 22:1-2



Meanings of TREES

IMMORTALITY

WISDOM

STRENGTH

BEAUTY

ETERNAL
LIFE

FUTURE



..be rooted and grounded in love
~ Ephes. 3:17

Why Plant Trees?

Benefits for whole ecosystem/ harmony in Creation
Contributes to: health & healing the web of life

- Watershed stewardship
- Restore habitat for wildlife
- Filter pollution, prevent runoff, improve water quality
- Prevent soil erosion
- Reduce carbon footprint



Changing the Landscape Paradigm: Mowed to Natural Use




It's more fun to MOW with REO!

REO Royale... Full 21" Cut; 1½ hp Engine; Only \$99⁹⁵

Can you see your lawn with a REO Royale and you'll ignore any kind of distraction. It's really more a job than a joy. There's no back-aching, no dirt on your back-looking draggers when you mow with REO—the way you know. The sturdy 1½ hp REO 6-cyl engine powers your Royale thru the toughest kind of grass, walks up steep grades, maneuvers around trees, shrubbery, gardens or walks slick as a whistle. You simply stroll along to keep it company.

On big or little lawns, it's a time and labor saver—pays for itself in a season or two. Look in the classified "place directory" for your nearest REO power mower dealer, and make a date for a demonstration. Join the 250,000 satisfied REO lawn mower owners, and cut your grass with REO power.

REO De Luxe TRIMLAWN

The power mower of tomorrow, today. Big 21" cut, 1½ hp, 8-cyl REO engine, knee-action cutting and folding; ground rollers; sets the blades and the hangers without cutting; "lets on a drive"; 3-speed motor with auto clutch; cutting width—seven flexible feet; grass, eliminates parking and edging. Trim 17" wide with far over 10" capacity. Riding safety and lawn trim attachment for the trim trimmer—extra.

REO MOTORS, INC.
Manufacturers of Tractors and Power
Lawnmowers

MAIL COUPON FOR FREE DESCRIPTIVE FOLDER

REO MOTORS, INC.
Lawn Mower Division, Dept. 1, 222
Lawrence St., Chicago

Send Free Folder to:

NAME _____

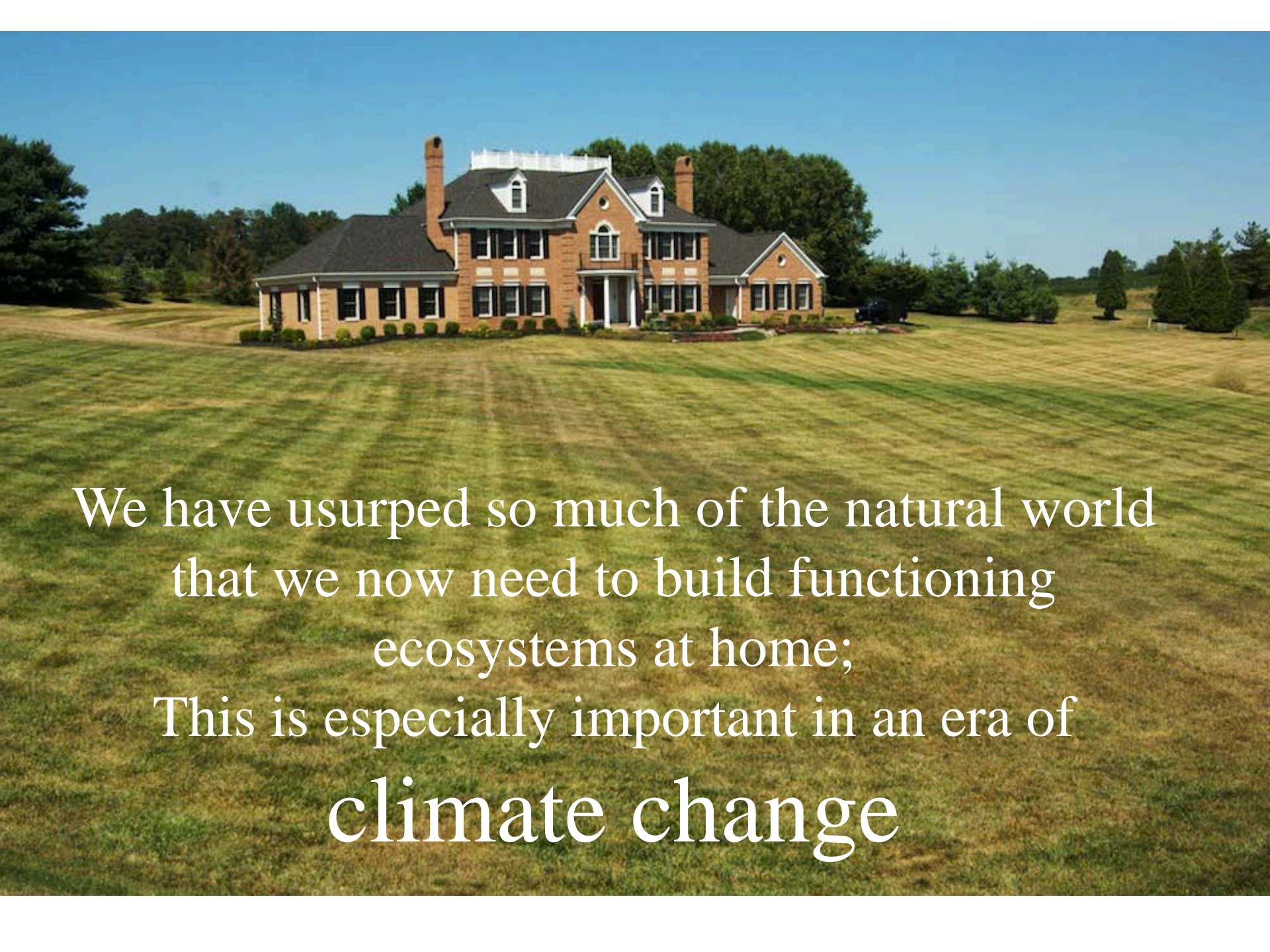
ADDRESS _____

CITY _____

Conventional Lawns

- Monoculture- usually one or two grass species
- Little wildlife value – creates a “food desert”
- Shallow root systems= less water uptake in storms
- High maintenance!





We have usurped so much of the natural world
that we now need to build functioning
ecosystems at home;
This is especially important in an era of
climate change



How many
caterpillars does it
take to feed a nest of
chickadees?

- 500 a day!

**Only native trees
host native insects.**

Planting native trees
heals the web of Life
~ God's Creation.



REDUCING CLIMATE CHANGE with TREES

- One hundred trees remove 53 tons of carbon dioxide and 430 pounds of other air pollutants per year.
- [Research from the Center for Chesapeake Communities](#)
 - In Baltimore, trees remove close to 5 million pounds of nitrogen dioxide annually —equal to removing 183,000 cars from the road and saving over \$26 million in associated health care costs each year.



Story

Workshop at Geneva Presbyterian Church:
Loved the Web of Life activity--- great!





Story

Workshop at Temple Emanuel

Rabbi Rhoda Silverman:

The workshop was a wonderful addition to our Tu Beshvat programming and will serve as good reflection piece come May when we get to the actual planting.



SONG: Trees of the Field



We shall go out with
joy and be led forth in
peace,
the mountains and the
hills will break forth
before you.
We'll go out with joy
and be led forth in
peace, and the trees
will clap their hands.

The trees of the field will clap their hands 3x
And we'll go out with joy.