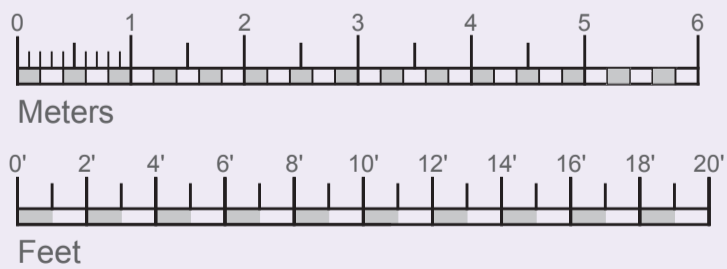
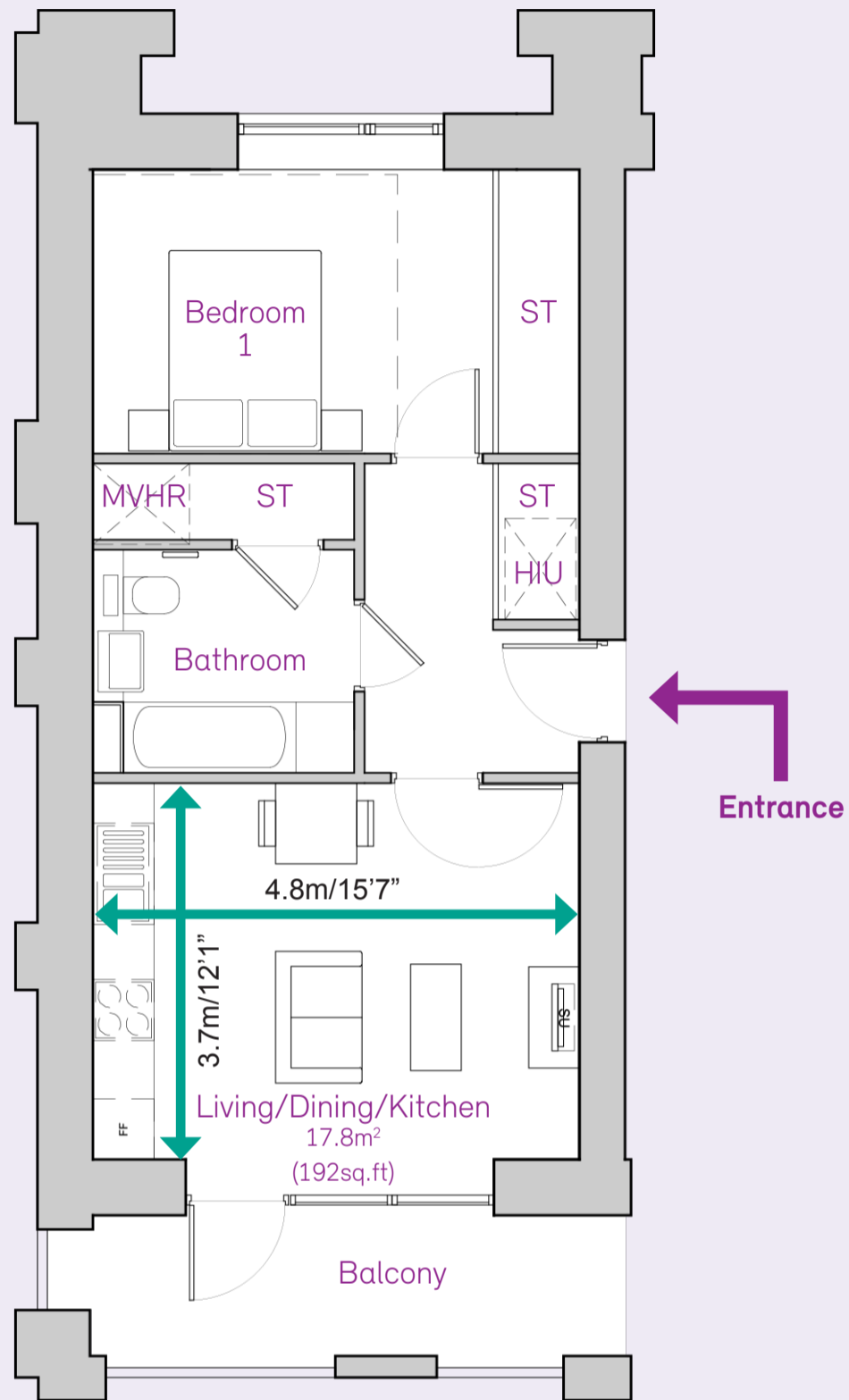
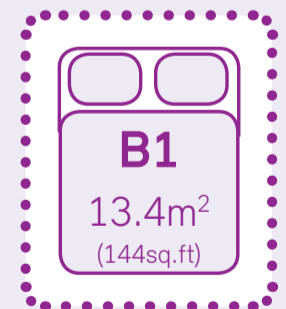


Proposed 1 Bed 1 Person Flat

Flat Plan



Bedroom



Minimum Area Size, set by planning policy - the Homes for Lambeth Space Standards

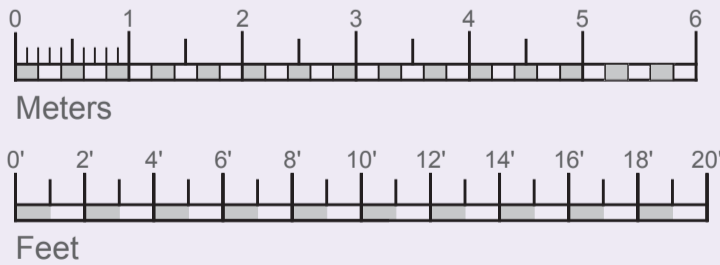
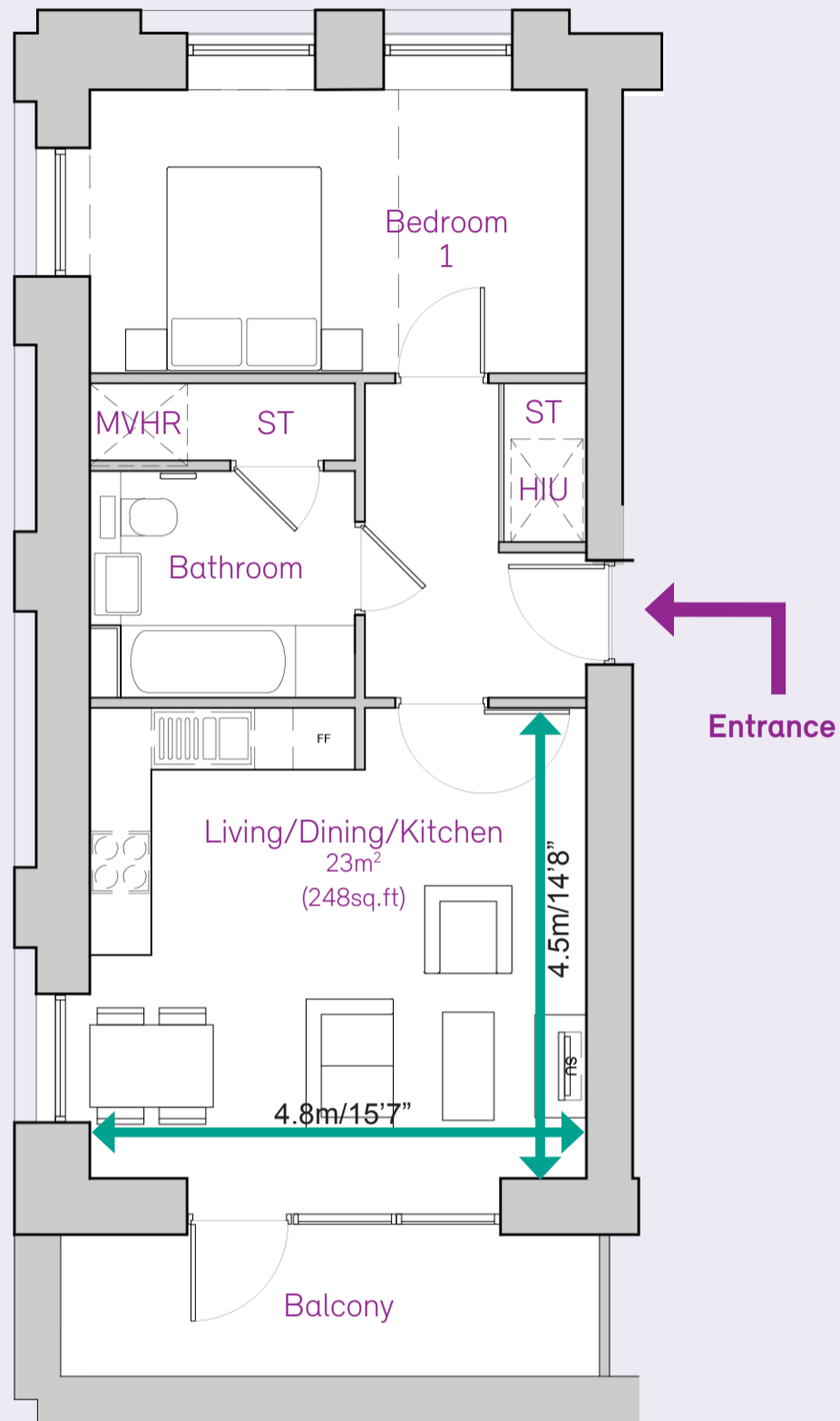
47m²
(506 sq.ft)

Room Sizes

<p>Kitchen</p>	<p>Living</p>	<p>Dining</p>	<p>Storage</p>	<p>Bathroom</p>
<p>17.8m² (192sq.ft)</p>			<p>3.8m² (41sq.ft)</p>	<p>5.7m² (61sq.ft)</p>

Proposed 1 Bed 2 Person Flat

Flat Plan



Bedroom



Minimum Area Size, set by planning policy - the Homes for Lambeth Space Standards

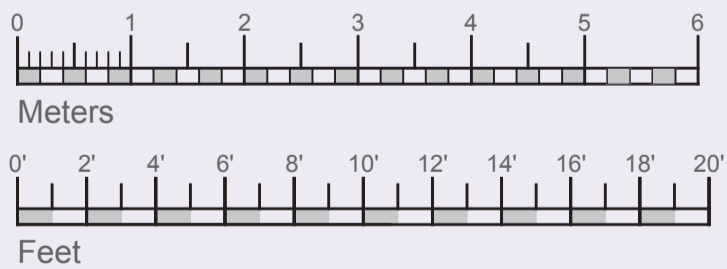
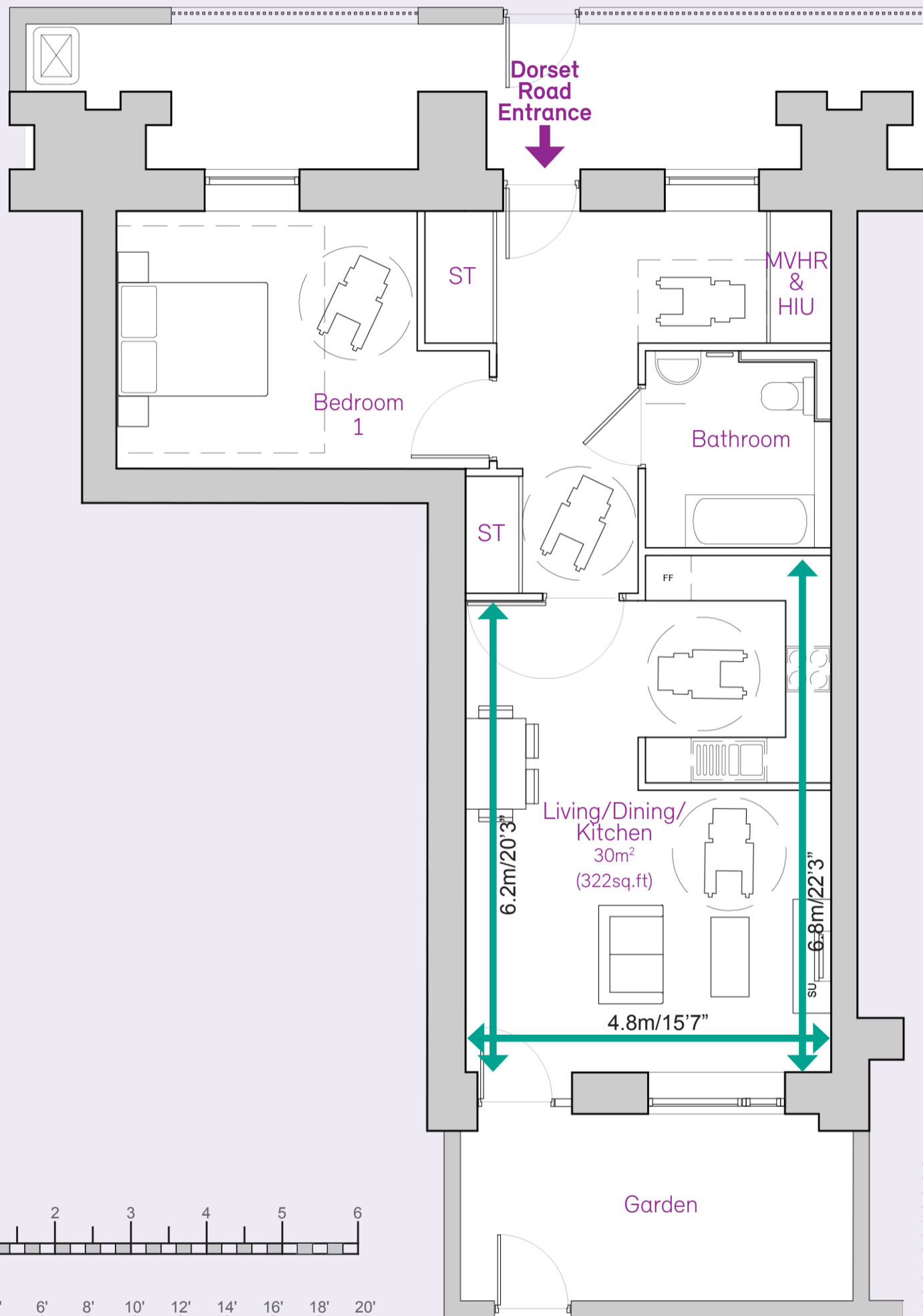
51m²
(549sq.ft)

Room Sizes

Kitchen 	Living 	Dining 	Storage 	Bathroom
+				
23m² (248sq.ft)			1.6m² (17sq.ft)	5.7m² (61sq.ft)

Proposed 1 Bed 2 Person Wheelchair Flat

Flat Plan



Minimum Area Size, set by planning policy - the Homes for Lambeth Space Standards

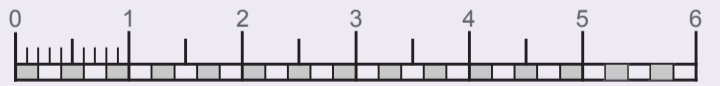
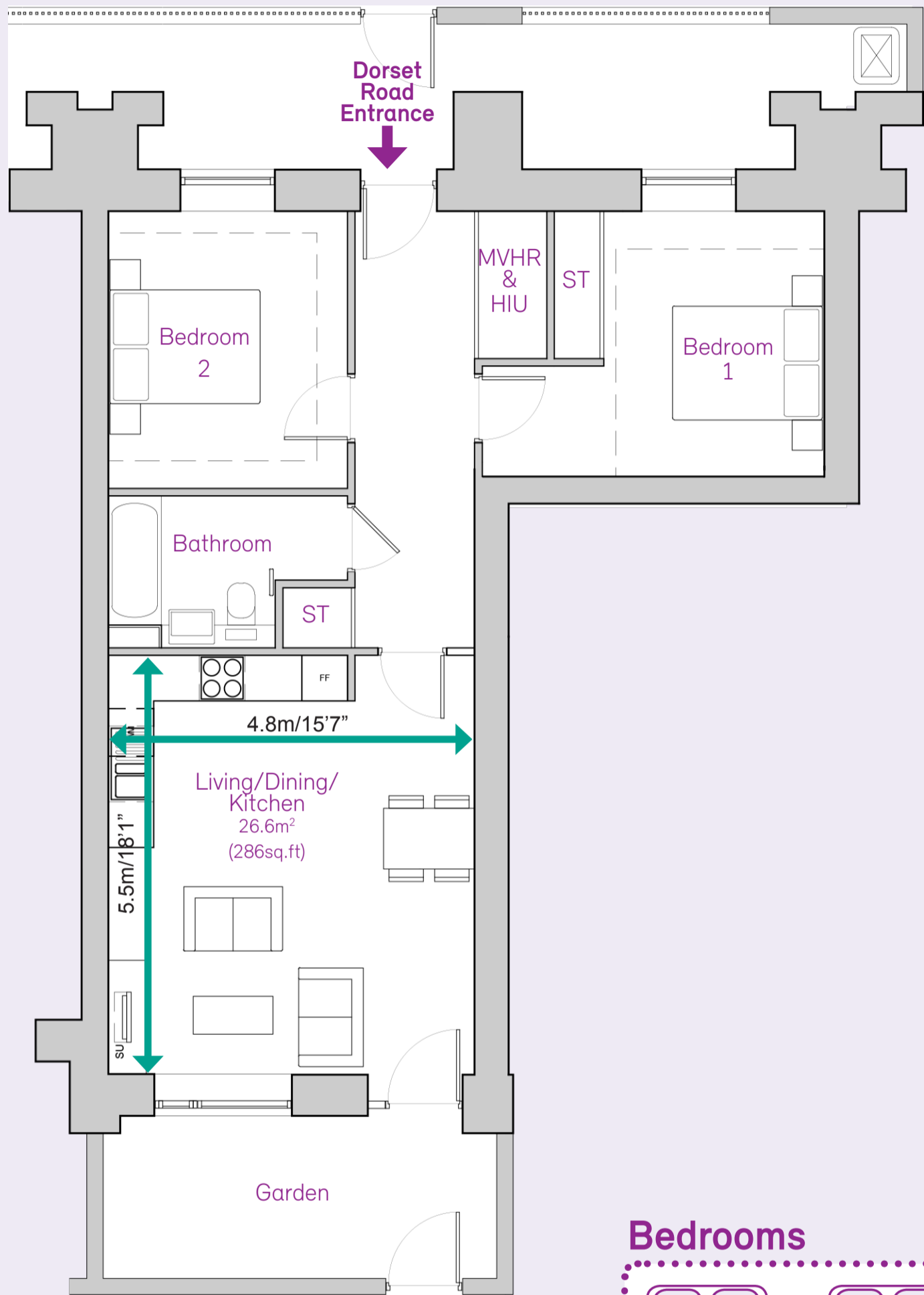
56m²
(603sq.ft)

Room Sizes

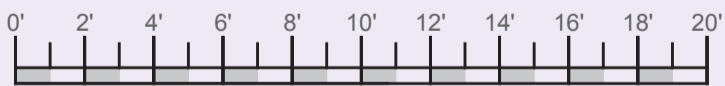
<p>Kitchen</p>	<p>Living</p>	<p>Dining</p>	<p>Storage</p>	<p>Bathroom</p>
<p>+</p>				
<p>30m² (322sq.ft)</p>			<p>2.7m² (29sq.ft)</p>	<p>6.3m² (68sq.ft)</p>

Proposed 2 Bed 4 Person Flat

Flat Plan



Meters



Feet

Bedrooms



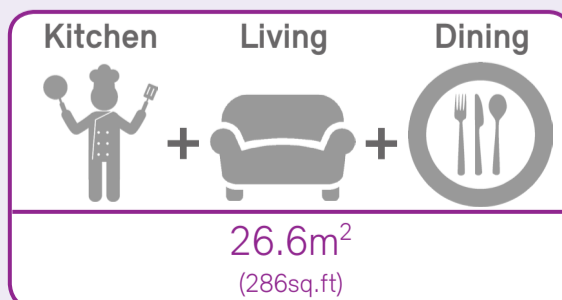
+



Minimum Area Size, set by planning policy - the Homes for Lambeth Space Standards

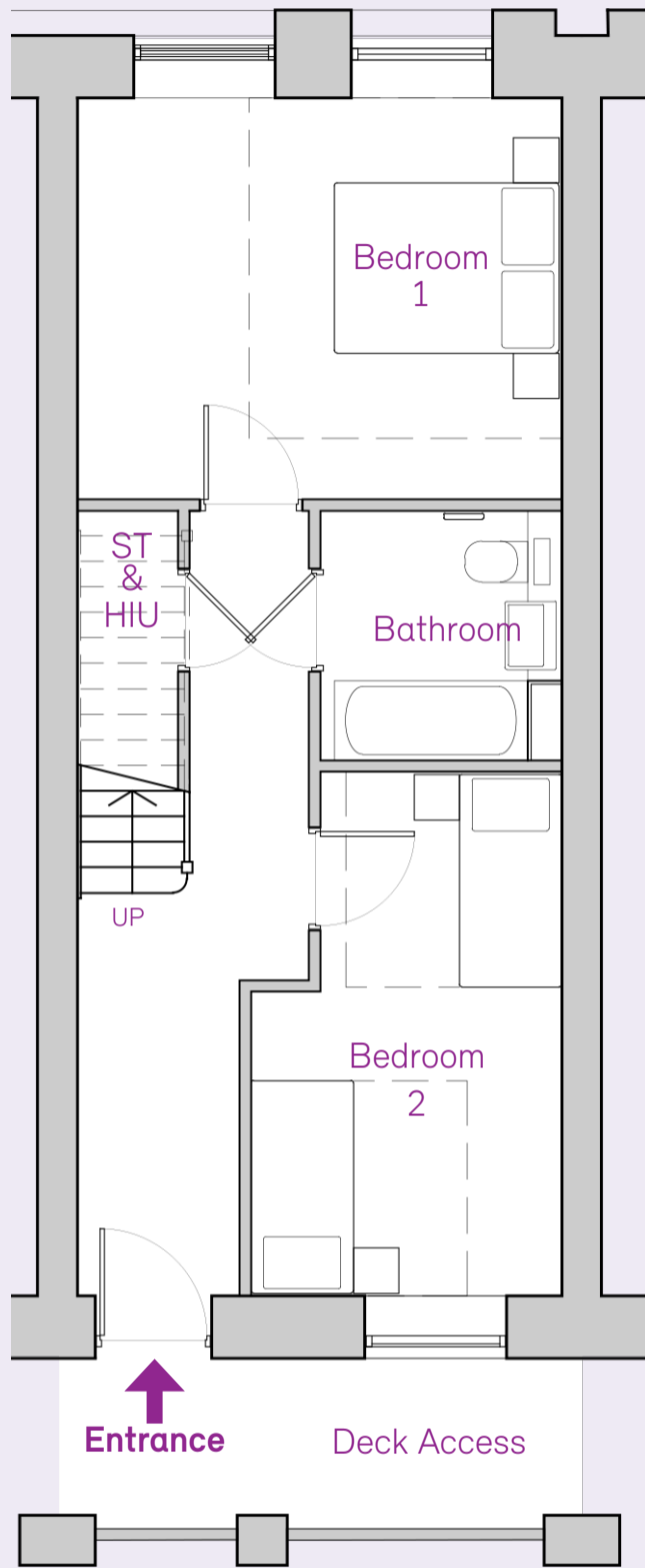
71m²
(764sq.ft)

Room Sizes

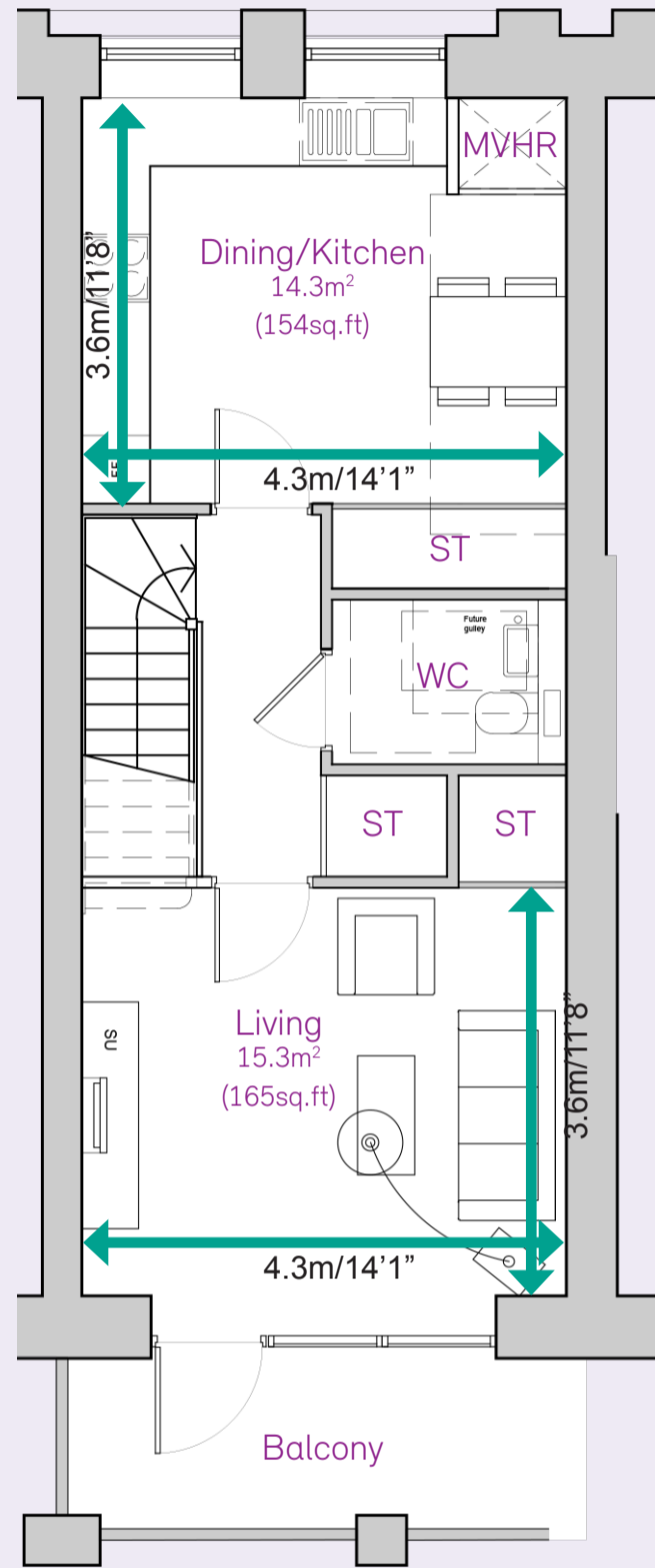


Proposed 2 Bed 4 Person Maisonette

Flat Plan

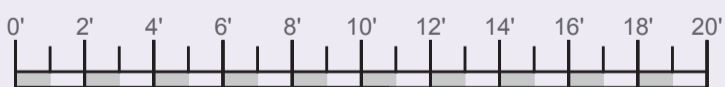
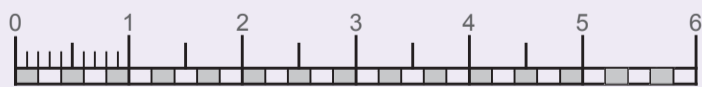
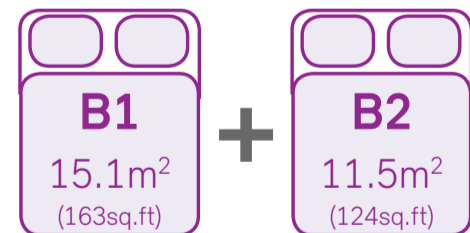


Lower Level



Upper Level

Bedrooms



Minimum Area Size, set by planning policy - the Homes for Lambeth Space Standards

80m²
(861sq.ft)

Room Sizes

Kitchen + Dining

14.3m²
(154sq.ft)

Living

15.3m²
(165sq.ft)

Storage

3.2m²
(34sq.ft)

WC

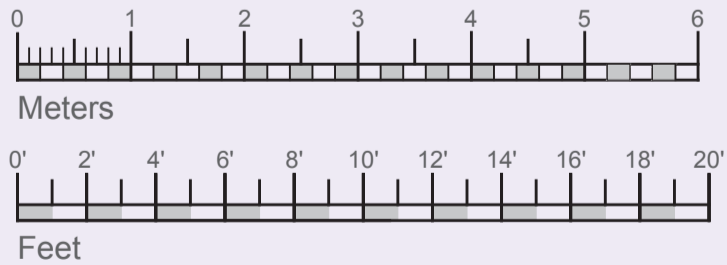
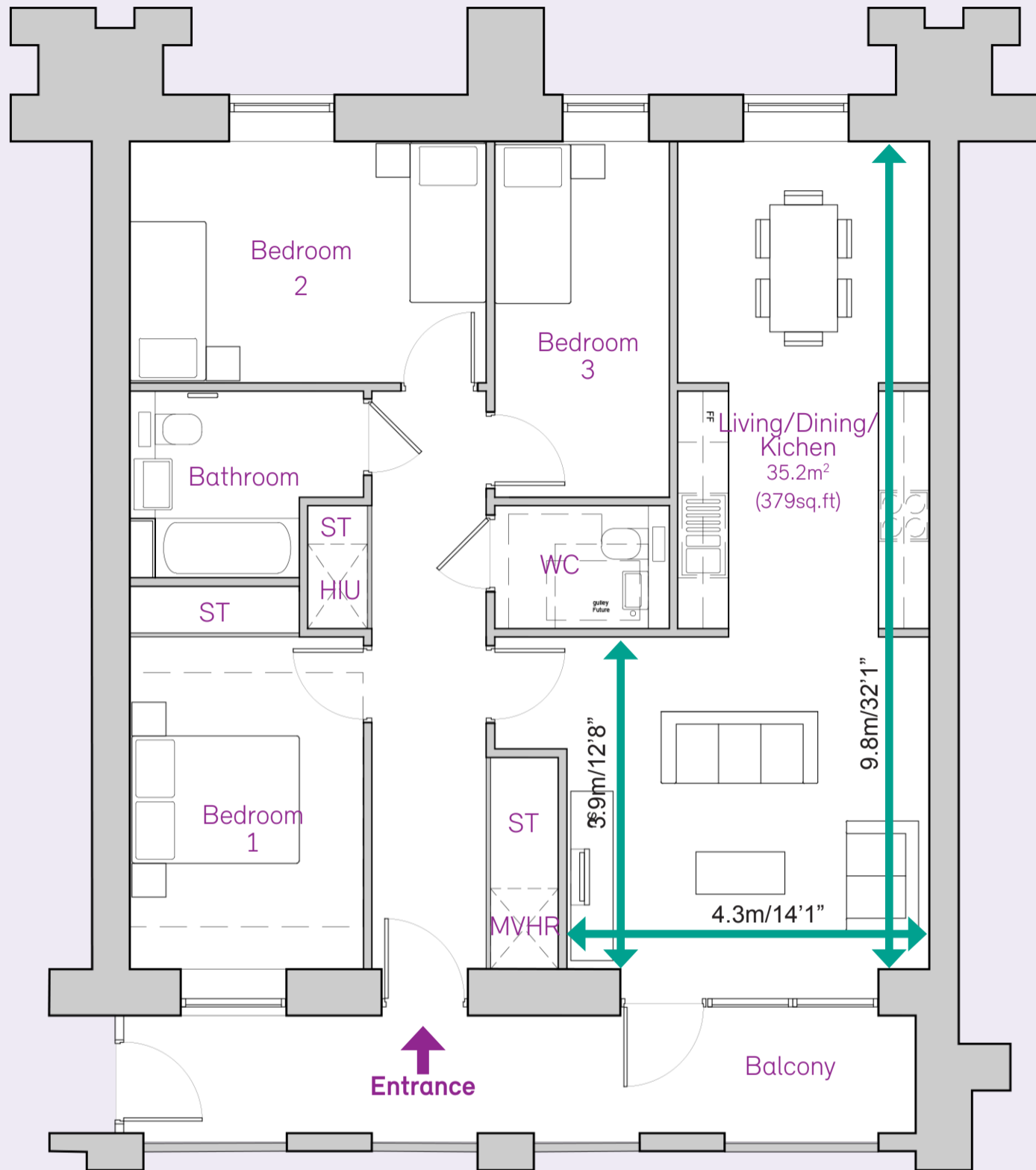
3.0m²
(34sq.ft)

Bathroom

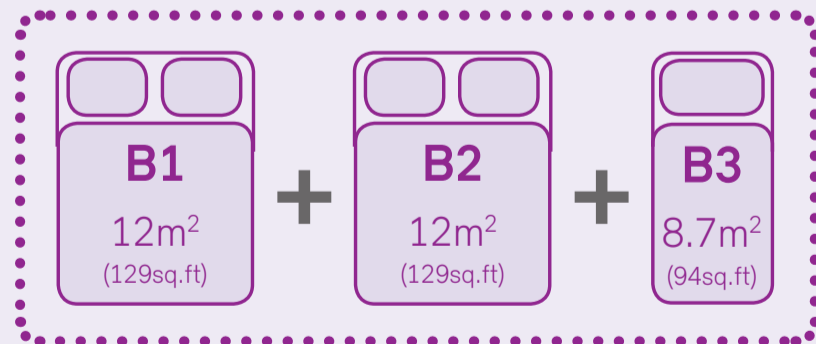
4.7m²
(51sq.ft)

Proposed 3 Bed 5 Person Flat

Flat Plan



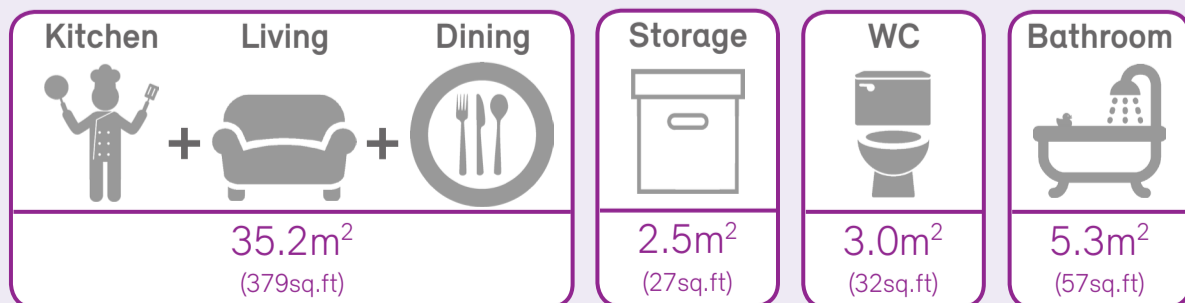
Bedrooms



Minimum Area Size, set by planning policy - the Homes for Lambeth Space Standards

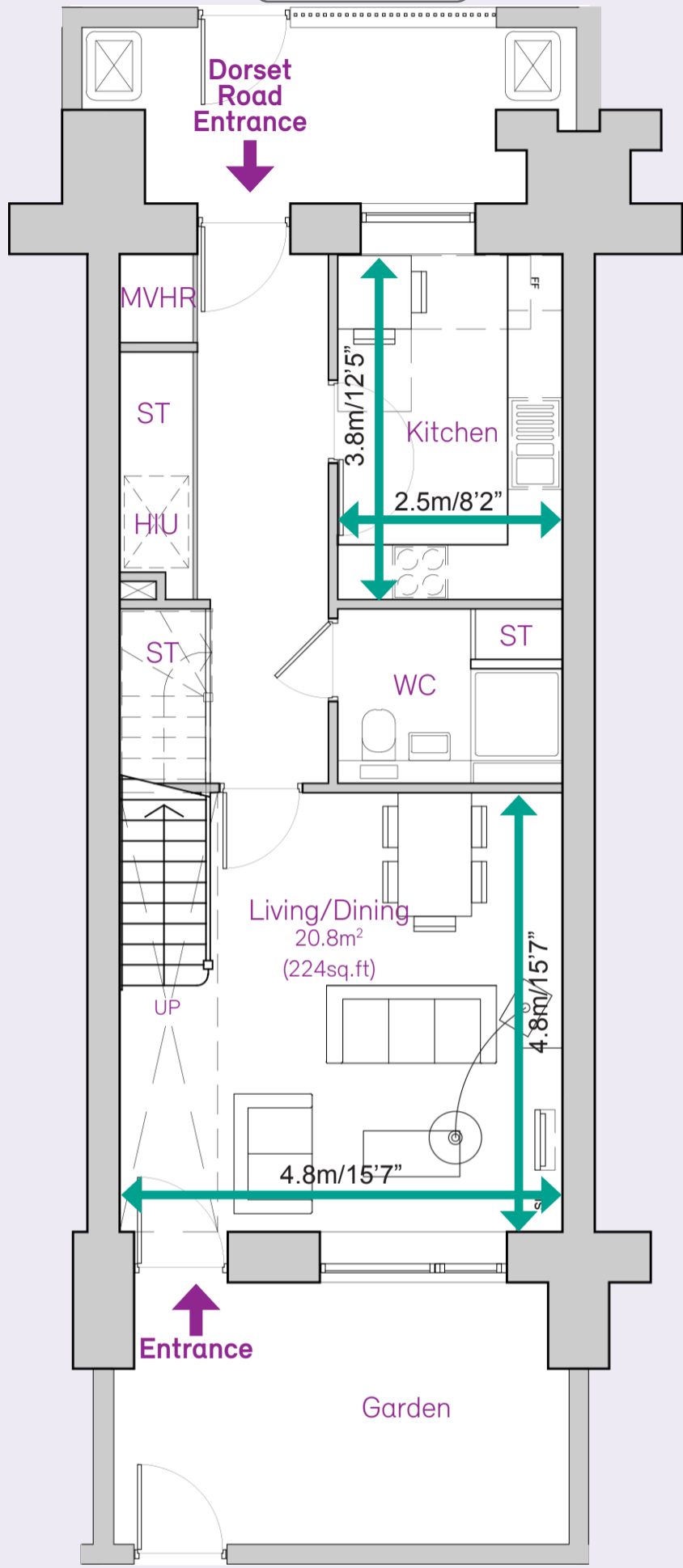
87m²
(936sq.ft)

Room Sizes

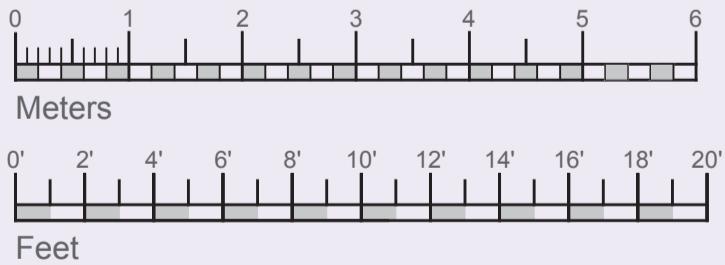
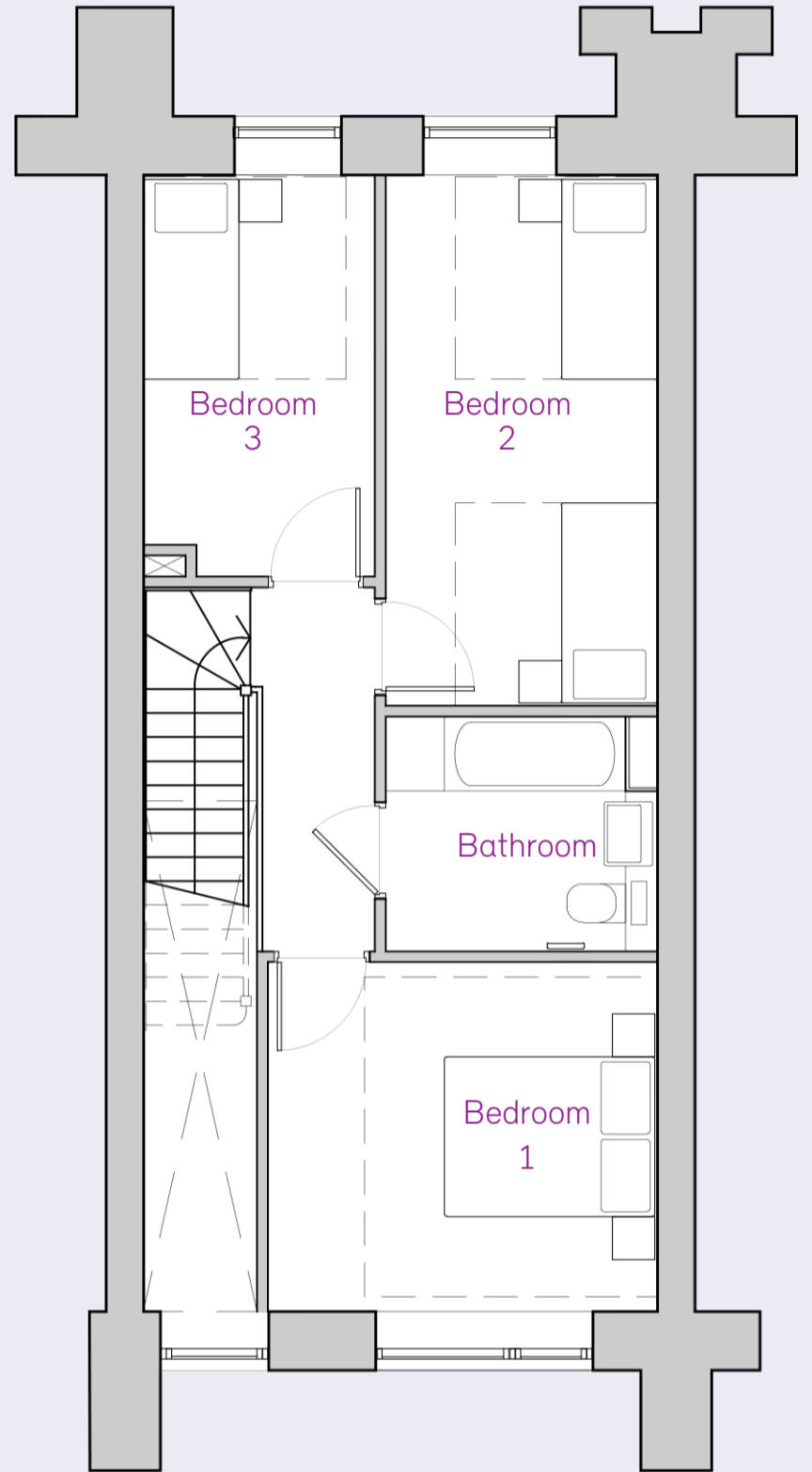


Proposed 3 Bed 5 Person Maisonette - Option 1

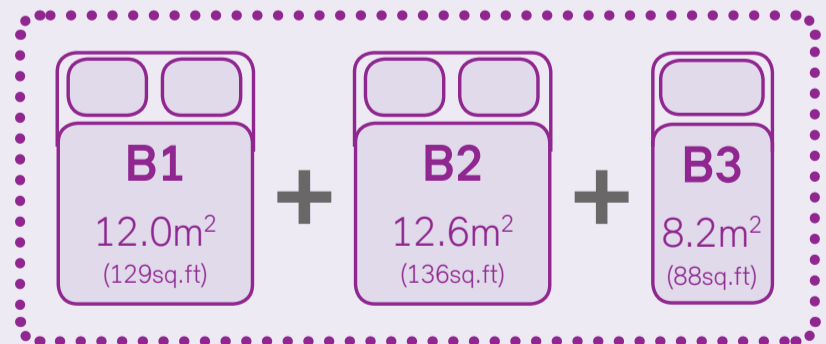
Lower Level



Upper Level



Bedrooms



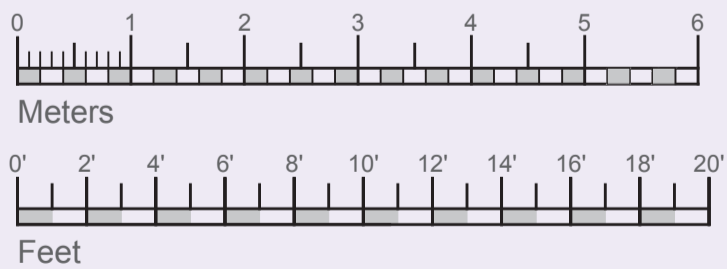
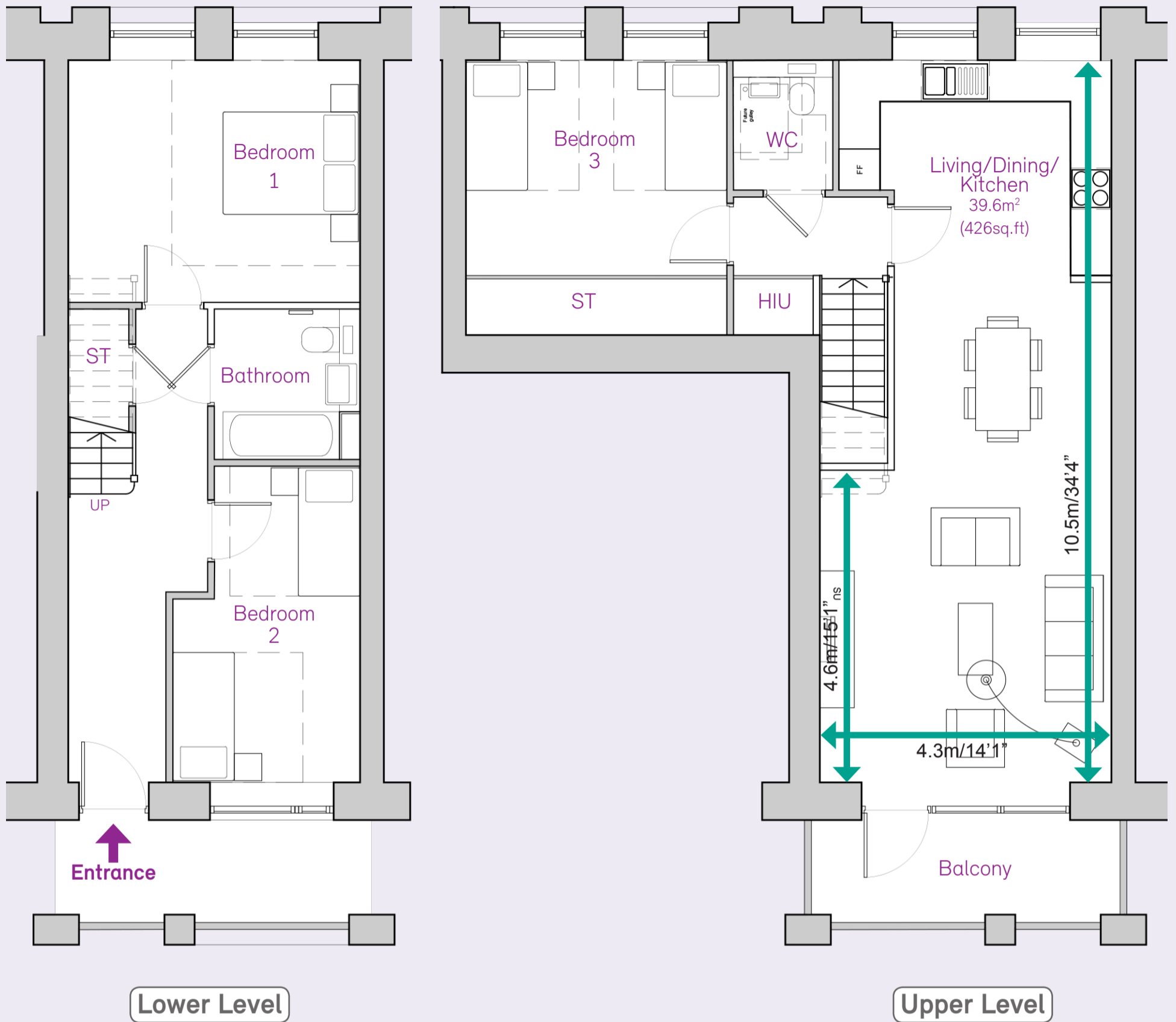
Minimum Area Size, set by planning policy - the Homes for Lambeth Space Standards

94m²
(1012sq.ft)

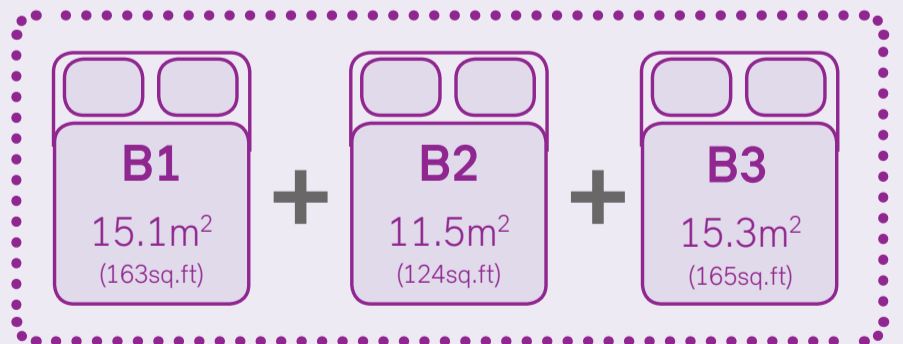
Room Sizes

<p>Kitchen</p> <p>9.2m² (99sq.ft)</p>	<p>Living + Dining</p> <p>20.8m² (224sq.ft)</p>	<p>Storage</p> <p>3m² (32sq.ft)</p>	<p>WC</p> <p>4m² (43sq.ft)</p>	<p>Bathroom</p> <p>5.6m² (60sq.ft)</p>
---	---	---	--	--

Proposed 3 Bed 6 Person Maisonette



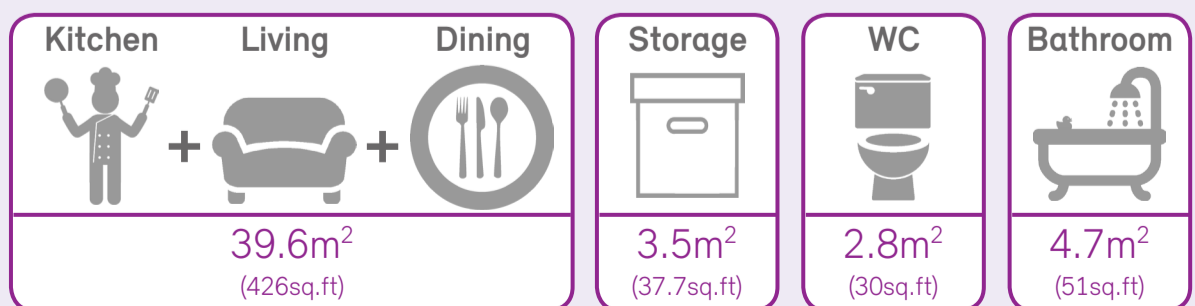
Bedrooms



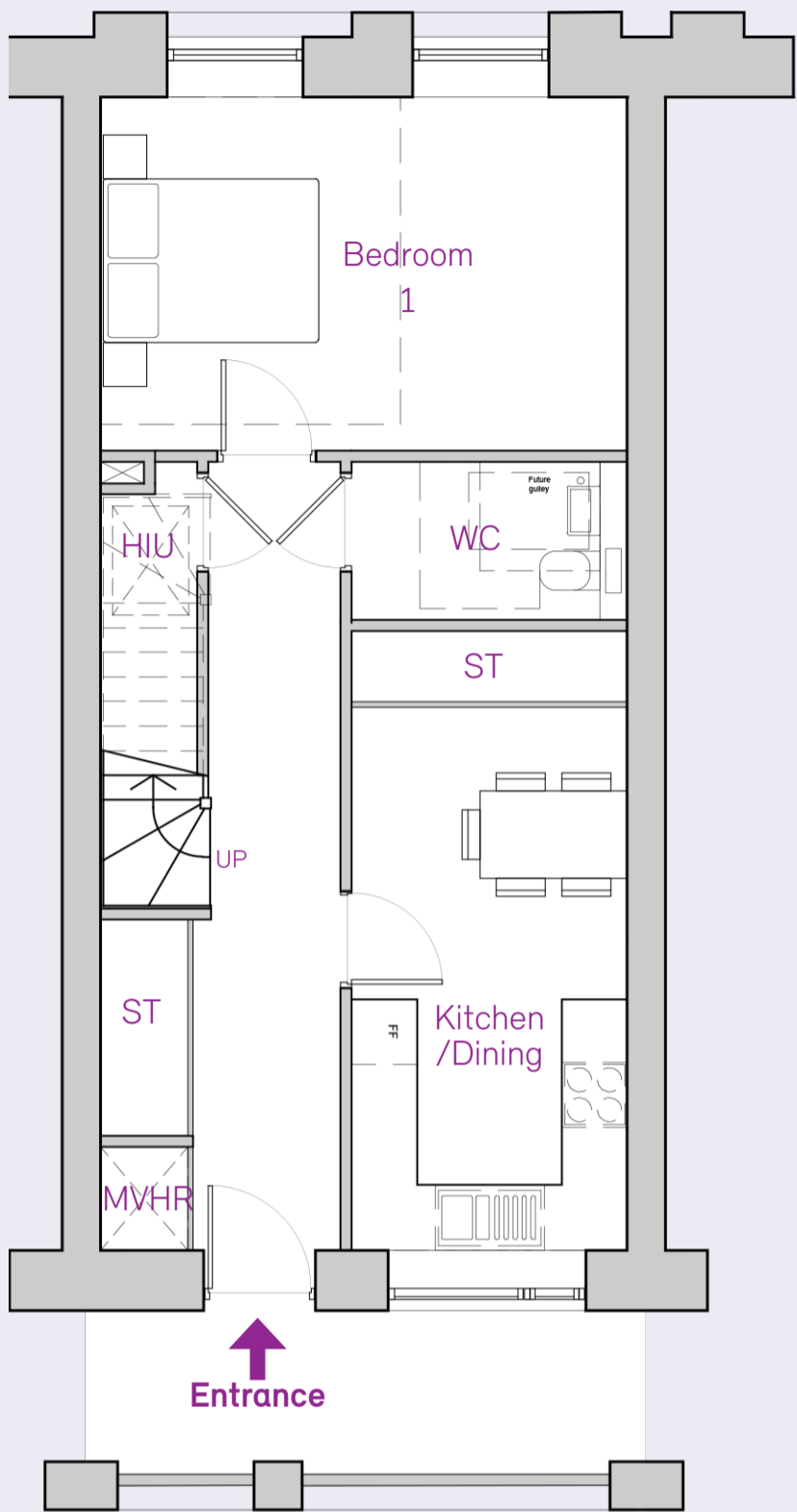
Minimum Area Size, set by planning policy - the Homes for Lambeth Space Standards

103m²
(1110sq.ft)

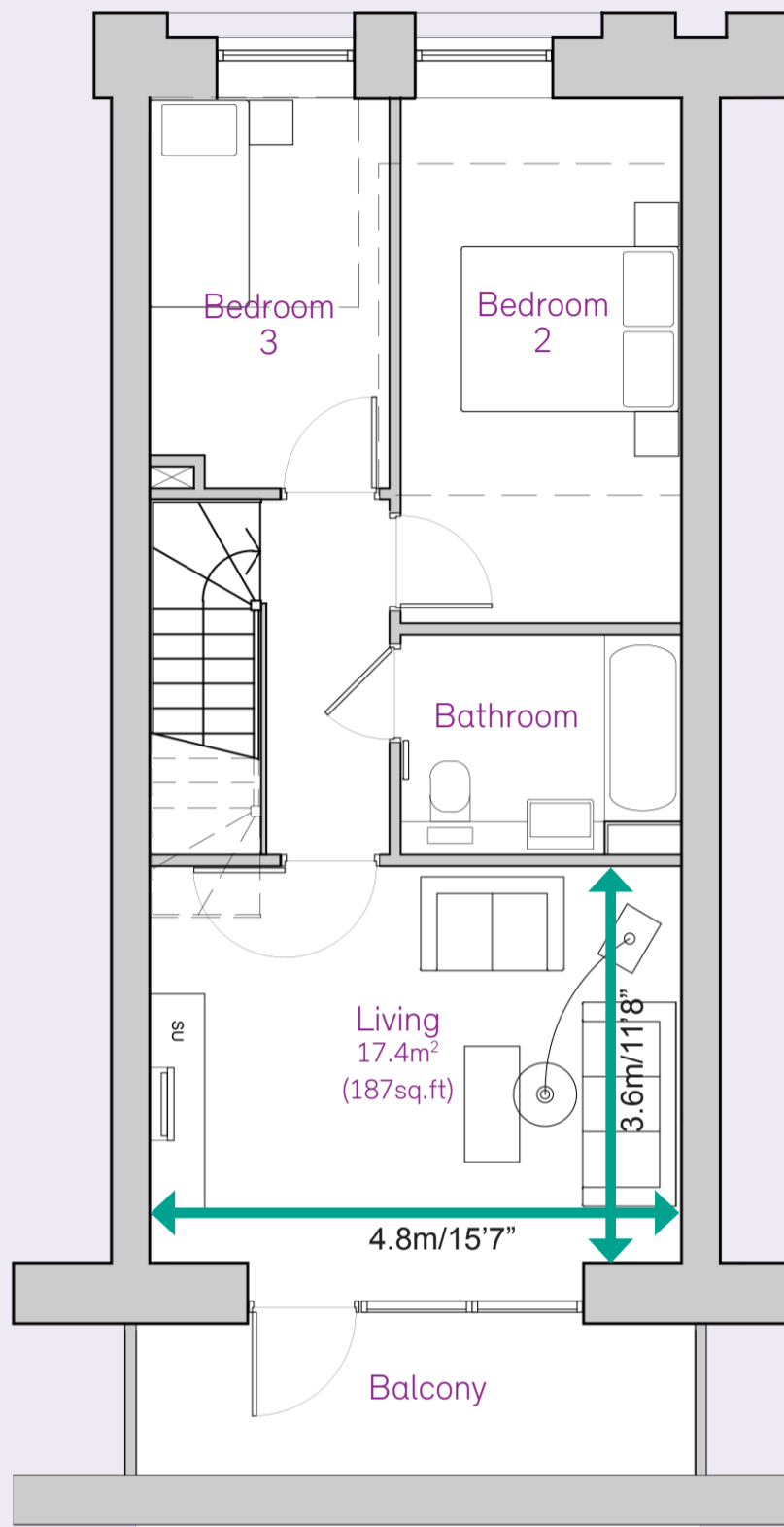
Room Sizes



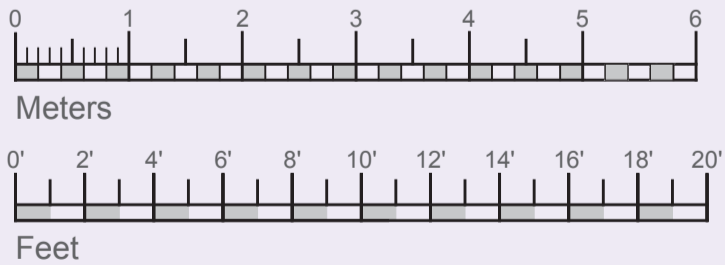
Proposed 3 Bed 5 Person Maisonette - Option 2



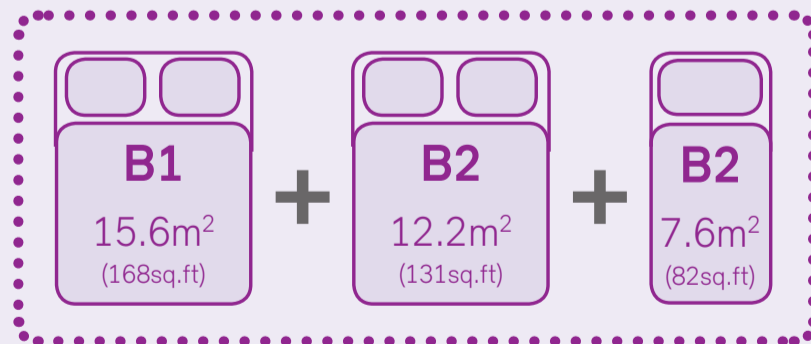
Lower Level



Upper Level



Bedrooms



Minimum Area Size, set by planning policy - the Homes for Lambeth Space Standards

94m²
(1012sq.ft)

Room Sizes

Kitchen + Dining

12.6m²
(136sq.ft)

Living

17.4m²
(187sq.ft)

Storage

3.2m²
(34sq.ft)

WC

3.7m²
(40sq.ft)

Bathroom

5.1m²
(55sq.ft)