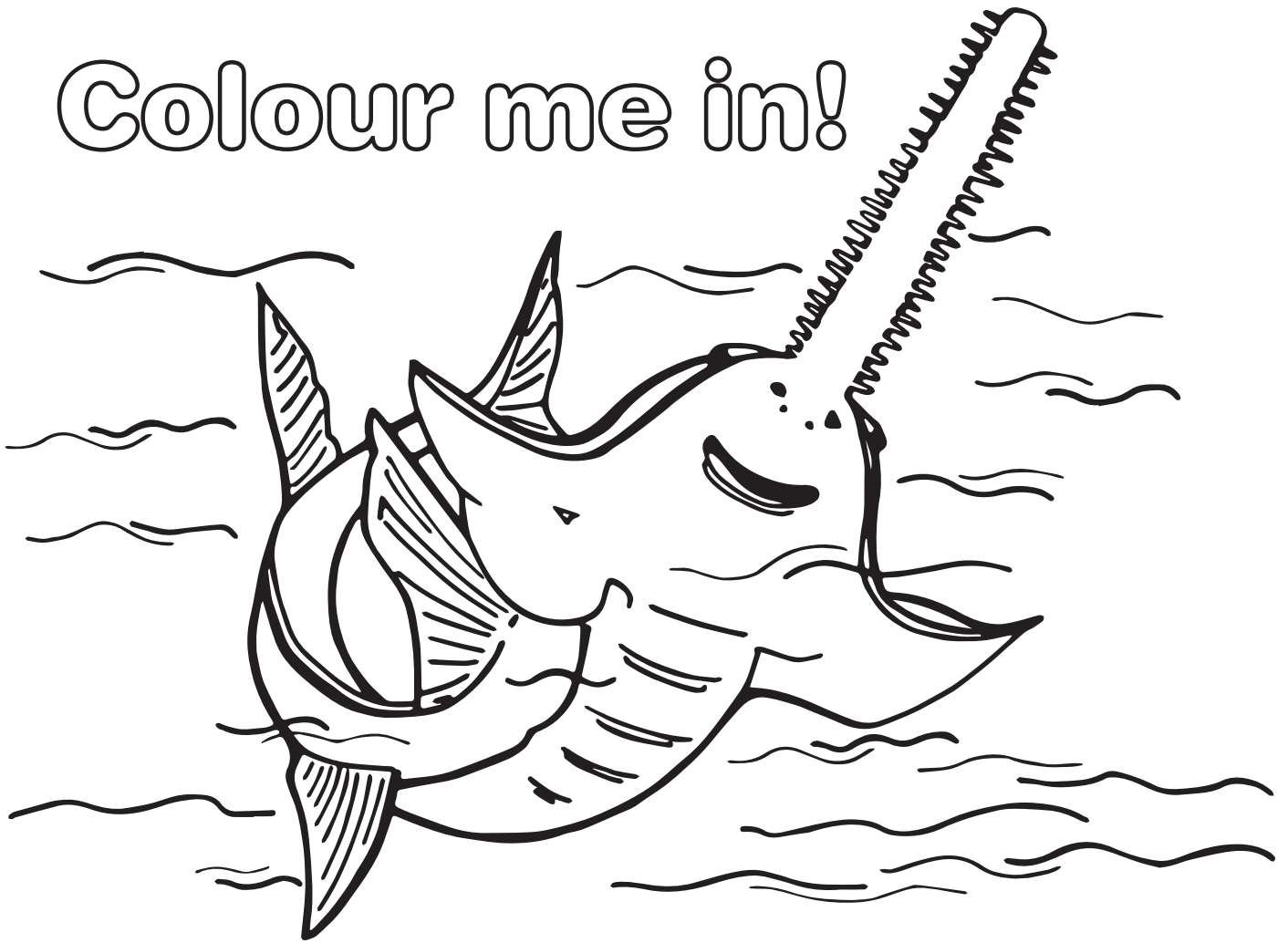


Colour me in!



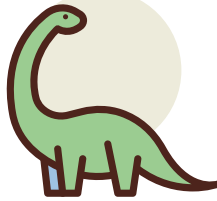
The Kimberley's Fitzroy River is home to the world's most important population of critically endangered freshwater sawfish.



Five fun facts about Sawfish!

1 Sawfish have lived on Earth since the time of the dinosaurs

Gigantic prehistoric sawfish were preyed upon by the largest known carnivorous dinosaur, the fearsome Spinosaurus.



2 The world's most important population of rare sawfish live in the Fitzroy River

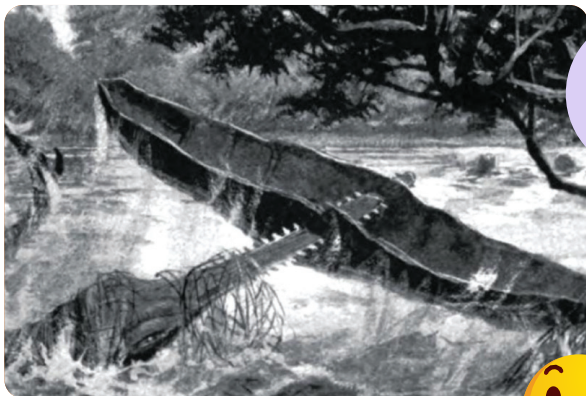
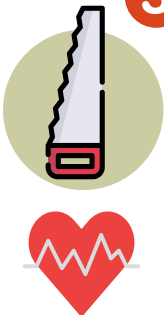
Baby sawfish are born in King Sound and migrate up the Fitzroy River as far as they can whilst the river is flowing – some have been found 400km away from the coast.



Photo: D Morgan

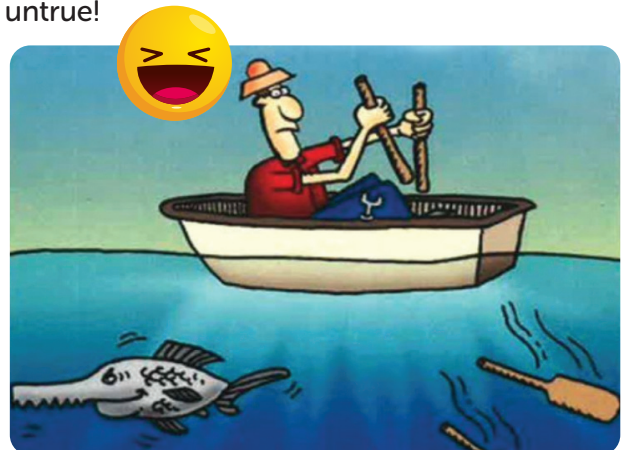
3 Sawfish get their name from their long snouts lined with sharp 'teeth' points

Their saws are part-weapon – for stunning fish and defending against predators, and part-sensor – for detecting the heartbeats of hidden prey.



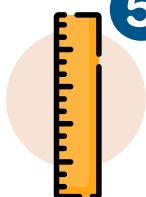
4 In sailor folklore, it was believed that sawfish could sink ships by piercing hulls with their sharp saws

These claims are now known to be entirely untrue!



5 Sawfish can grow to a whopping seven metres long!

Once sawfish have grown longer than 3 metres, they are big enough to leave the safety of the Fitzroy River. They live the rest of their life in the ocean growing to a maximum length of seven metres.



PROTECT THE FITZROY RIVER

www.likenowhereelse.org.au