

## Flogging the farm: coal mine land ownership in the Hunter, Mid-West and North West of New South Wales

This paper is the result of title searches of the NSW Land and Property Information Service database and analysis of the NSW Local Government Area (LGA) cadastre files for geographic information systems. The purpose is to identify the extent of land ownership by coal companies in eight NSW LGAs (the study area – see map): Gloucester, Gunnedah, Liverpool Plains, Mid-western, Muswellbrook, Narrabri, Singleton, and Upper Hunter.

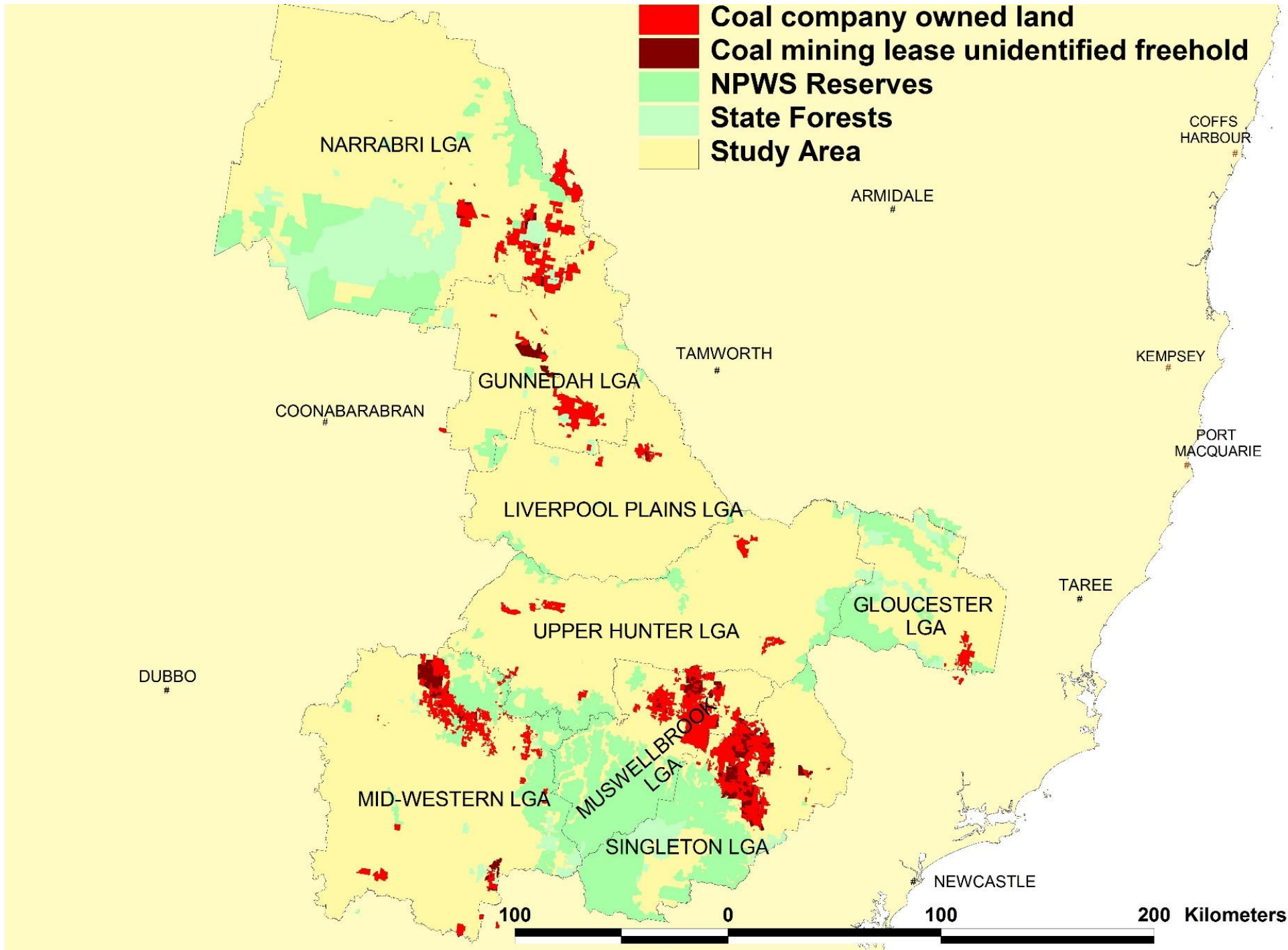
Though not exhaustive, the title searches undertaken identified that **284,093 ha** of freehold land is owned by coal companies across the study area. This is equivalent to 702,009 acres. When all land owned or occupied by coal companies (via coal leases) is considered, including crown land, this increases to 352,897 hectares (872,027 acres). (See Table 1 and 7).

### Other key findings:

- Identified coal companies own at least **6%** of all freehold land in the study area (see Table 1), which increases to 6.5% of all freehold land if all areas owned or occupied by coal companies via coal mining leases are considered (See Table 1 and 2)
- Coal mining companies' land ownership is concentrated in Muswellbrook and Singleton local government areas. In Muswellbrook, **24%** of all freehold land, and **15%** of all freehold land in Singleton is owned by coal companies (See Table 1).
- This is likely to be already impacting on agricultural industries in these local government areas. Coal companies own or occupy **23%** and **27%** of the mapped Biophysical Strategic Agricultural Land in Muswellbrook and Singleton respectively (See Table 6).
- Foreign and multinational corporations own or occupy **86%** of all the coal company land in the eight LGAs<sup>1</sup>. UK companies hold **35%**, Chinese corporations hold **12%**, USA companies hold **7%** and Japanese companies **5%** of coal company land. Korean, Indian and Brazilian companies together hold an additional **7%** of coal company land (See Table 4 and 5).
- The UK/Swiss multinational corporation Glencore-Xstrata holds the largest area of coal owned land in the study area with 52,642 ha, followed by Whitehaven (43,086 ha), Rio Tinto (UK – 41,525 ha), Peabody (USA - 23,652 ha), BHP Billiton (UK/Australia 21,613 ha), Yancoal (Chinese - 21,094 ha), China Shenhua (19,866 ha) and Idemitsu (Japanese - 17,341 ha) (See Table 5 and 7).
- Coal Mining Leases cover almost **170,000 ha** or **2.5 %** of the study area. About **12%** of the area covered by coal leases is public land, half of which is State Forest (See Table 2). This proportion is far higher in Narrabri and Mid-Western. Coal Mining Leases are made up of **40%** and **32%** public land respectively in those LGAs (See Table 3).

---

<sup>1</sup> The majority of the remaining 14% is owned by Whitehaven Coal, a nominally Australian company which is majority foreign-owned.



## Tables and data

**Table 1. Area of coal company owned land in the study area.**

Local Government Area (ha)	Total area (ha)	Total freehold area (ha)	Identified coal company land (ha)	% total freehold land
GLOUCESTER	408,693	267,672	6,767	3
GUNNEDAH	670,760	602,307	34,522	6
LIVERPOOL PLAINS	698,194	651,986	5,038	1
MID-WESTERN	1,215,457	910,714	55,011	6
MUSWELLBROOK	468,782	238,704	57,357	24
NARRABRI	1,741,997	1,137,124	48,427	4
SINGLETON	664,858	381,034	58,241	15
UPPER HUNTER	1,122,568	964,465	18,731	2
TOTAL	6,991,310	5,154,007	284,094	6

**Table 2: Area of coal Mining Leases in the study area.**

Local Government Area (ha)	Coal leases (ha)	Coal Mine Leases % total area	Identified coal company owned land on Mine Leases (ha)	Unidentified freehold on Mine Leases (ha)	Total freehold on Mine Leases (ha)	Mine lease freehold % Total freehold
GLOUCESTER	1,527	0	1,512	6	1,518	1
GUNNEDAH	15,135	2	5,331	7,856	13,187	2
LIVERPOOL PLAINS	1,229	0	435	777	1,212	0
MID-WESTERN	29,050	2	12,620	7,197	19,817	2
MUSWELLBROOK	32,699	7	24,403	7,223	31,626	13
NARRABRI	19,637	1	8,846	2,971	11,817	1
SINGLETON	69,146	10	<b>44,592</b>	<b>21,955</b>	66,546	17
UPPER HUNTER	<b>1,943</b>	<b>0</b>	1,595	347	<b>1,943</b>	<b>0</b>
TOTAL	169,220	2	99,334	48,333	147,666	3

**Table 3: Public land area of coal Mining Leases in the study area**

Local Government	Coal Mining Leases (ha)	State Forest (ha)	Crown land (ha)	Local Government Authority (ha)	NSW government (ha)	Total public land on coal Mining Leases (ha)	Unknown tenure (ha)	Public land % coal Mining Leases
GLOUCESTER	1,527	-	0	9	-	9	-	1
GUNNEDAH	15,135	1,151	766	31	-	1,948	-	13
LIVERPOOL PLAINS	1,229	-	17	-	-	17	-	1
MID-WESTERN	29,050	1,247	7,656	4	326	9,233	-	32
MUSWELLBROOK	32,699	-	314	21	1	336	738	1
NARRABRI	19,637	7,777	43	-	-	7,820	-	40
SINGLETON	69,146	660	395	22	29	1,106	1,494	2
UPPER HUNTER	1,943	-	-	-	-	-	-	-
<b>TOTAL</b>	<b>169,220</b>	<b>10,835</b>	<b>9,191</b>	<b>87</b>	<b>357</b>	<b>20,470</b>	<b>2,231</b>	<b>12</b>

**Table 4: Coal land owners' nationality**

Nationality	M'brook	Singleton	Upper Hunter	Gunnedah	Narrabri	Liverpool Plains	Mid-Western	Gloucester	TOTAL (ha)	% coal company land
United Kingdom	41,293	43,850	15,916	532		1,038	15,506		118,137	35
Australian		1,743		12,342	27,057	4,000		1,847	46,988	14
Chinese		1,429		19,866			14,746	4,919	40,960	12
USA	1,951	6,118	331				15,252		23,650	7
Japanese	3,650	456	201	1,716	11,799				17,822	5
Korean					9,570		5,186		14,756	4
Indian							1,864		1,864	1
Brazilian		3,566							3,566	1
Unknown	1,097	973	-	66			2,455		4,591	1

**Table 5: Parent coal companies and land ownership**

Parent company	Nationality	M'brook	Singleton	Upper Hunter	Gunnedah	Narrabri	Liverpool Plains	Mid Western	Gloucester	Total (ha)
Anglo American	UK	2,355								2,355
Banpu	Indian							1,864		1,864
BHP	UK/Australia	16,055		3,988	532		1,038			21,613
Bloomfield	Australian		1,678			375				2,053
China Shenua	Chinese				19,866					19,866
Daewoo	Korean					8,010				8,010
GRL	Australian								1,847	1,847
Idemitsu	Japanese	3,625		201	1,716	11,799				17,341
Itochu	Japanese		456							456
KEPCO	Korean							5,140		5,140
KORES	Korean					1,560		46	1,606	3,212
Mitsui	Japanese	25								25
Nucoal	Australian		3							3
Peabody	USA	1,951	6,118	331				15,252		23,652
Rio Tinto	UK	6140	22,666	11,927				792		41,525
Vale	Brazilian		3,566							3,566
Whitehaven	Australian		62		12,342	26,682	4000			43,086
Xstrata	UK/Swiss	16,743	21,184	1				14,714		52,642
Yancoal	Chinese		1,429					14,746	4,919	21,094
Unknown	Unknown	1,097	973	0	66			2,455		4,591

**Table 6: Coal company owned/occupied land over Strategic Agricultural Land and Critical Industry Clusters.**

Local Government Area	Coal company land over Biophysical Strategic Agricultural Land	Total BioSAL	Coal company land % of BioSAL	Coal company land over Critical Industry Cluster (Equine)	Total CIC - Equine	Coal company land % of CIC -Equine	Coal company land over Critical Industry Cluster (Viticulture)	Total CIC-Viticulture	Coal company land % of total CIC-Viticulture
<b>GUNNEDAH</b>	6,119	271,390	2	0	0	-	0	0	-
<b>LIVERPOOL PLAINS</b>	1,043	253,523	0	0	0	-	0	0	-
<b>MID-WESTERN</b>	1,500	41,498	4	1,122	7,528	15	0	0	-
<b>MUSWELLBROOK</b>	5,829	25,574	23	2,998	90,978	3	2,225	46,278	5
<b>NARRABRI</b>	1,926	361,670	1	0	0	-	0	0	-
<b>SINGLETON</b>	8,444	30,891	27	246	5,744	4	836	15,517	5
<b>UPPER HUNTER</b>	4,731	207,065	2	3,998	249,881	2	0	648	-
<b>TOTAL</b>	29,592	1,191,612	2	8364	354,131	2	3,061	62,443	5

**Table 7: Coal companies identified as owning land in the study area**

Title holder	Parent company	Nationality	M'brook	Singleton	Upper Hunter	Gunnedah	Narrabri	Liverpool Plains	Mid-Western	Gloucester	TOTAL
<b>ANGLO COAL (DRAYTONS STH MANAGEMENT) P/L</b>	Anglo American	UK	332								332
<b>ANGLO COAL (DRAYTONS) PTY LIMITED</b>	Anglo American	UK	2,023								2,023
<b>ASHTON COAL MINES LIMITED</b>	Yancoal	Chinese		1,429							1,429
<b>ASTON COAL 2 PTY LTD</b>	Whitehaven	Australian				2,516	11,269				13,785
<b>BCA NO 11 PTY LIMITED</b>			308								308
<b>BENGALLA MINING COMPANY LIMITED</b>	Rio Tinto	UK	233								233

<b>BETALPHA PTY LIMITED</b>	Whitehaven	Australian						25			25
<b>BIG BEN HOLDINGS PTY LIMITED</b>	Bloomfield	Australian		184			375				560
<b>BOGGABRI COAL PTY LIMITED</b>	Idemitsu	Japanese				1,716	11,799				13,515
<b>BULGA COAL MANAGAMENT PTY LIMITED</b>	Xstrata	UK		1,536							1,536
<b>CHARBON COAL PTY LIMITED</b>	Banpu	Indian							1,841		1,841
<b>CIM STRATFORD PTY LTD</b>	Yancoal	Chinese								2,325	2,325
<b>COAL &amp; ALLIED OPERATIONS PTY LTD</b>	Rio Tinto	UK	2,406	9,411	6,705						18,522
<b>COAL MINES AUSTRALIA PTY LTD</b>	BHP	UK/Australia				532		1,038			1,570
<b>COAL OPERATIONS AUSTRALIA LIMITED</b>			789	3							792
<b>COALEX HOLDINGS PTY LIMITED</b>	Xstrata	UK/Swiss							953		953
<b>COALPAC PTY LIMITED</b>									600		600
<b>COALWORKS (VICKERY SOUTH) PTY LTD</b>	Whitehaven	Australian				9					9
<b>CREEK RESOURCES PTY LIMITED</b>	Whitehaven	Australian						380			380
<b>CUMNOCK NO 1 COLLIERY PTY LIMITED</b>	Xstrata	UK/Swiss	2	1,553							1,555
<b>CURLEWIS COAL &amp; COKE PTY LIMITED</b>						66					66
<b>DAEWOO INTERNATIONAL NARRABRI INVESTMENT</b>	Daewoo	Korean					8,010				8,010
<b>DOYLES CREEK MINING PTY LTD</b>	Nucoal	Australian		3							3
<b>ENEX FOYDELL PTY LIMITED</b>	Xstrata	UK/Swiss	731	1,730							2,461
<b>ENHANCE PLACE PTY LIMITED</b>									1,829		1,829
<b>GLENCORE COAL PTY LIMITED</b>	Xstrata	UK/Swiss		35							35
<b>GLENDELL TENEMENT PTY LIMITED</b>	Xstrata	UK/Swiss		1,317							1,317
<b>GLOUCESTER COAL LTD</b>	Yancoal	Chinese								101	101
<b>GLOUCESTER RESOURCES (AG) PTY LTD</b>	GRL	Australian								1,847	1,847

<b>HUNTER COAL MINES PTY LTD</b>					0					0
<b>HUNTER VALLEY ENERGY COAL LIMITED</b>	BHP	UK/Australia	16,055		3,988					20,043
<b>ICRA CUMNOCK PTY LIMITED</b>	Itochu	Japanese		456						456
<b>INTEGRA COAL OPERATIONS PTY LIMITED</b>	Vale	Brazilian		2,678						2,678
<b>IVANHOE COAL PTY LIMITED</b>	Banpu	Indian						23		23
<b>J &amp; A BROWN ABERMAIN SEAHAM COLLIERIES P/L</b>	Rio Tinto	UK		28						28
<b>KANDOS COLLIERIES LIMITED</b>								26		26
<b>KEPCO BYLONG AUSTRALIA PTY LIMITED</b>	KEPCO	Korean						5,140		5,140
<b>KORES AUSTRALIA MOOLARBEN COAL PTY LTD</b>	KORES	Korean						46		46
<b>KORES NARRABRI PTY LTD</b>	KORES	Korean				1,560				1,560
<b>LIDDELL COAL OPERATIONS PTY LIMITED</b>	Xstrata	UK/Swiss		46						46
<b>LIDDELL TENEMENTS PTY LIMITED</b>	Xstrata	UK/Swiss	2,644							2,644
<b>MAITALND MAIN COLLIERIES PTY LTD</b>	Vale	Brazilian		636						636
<b>MANGOOLA COAL OPERATIONS PTY LIMITED</b>	Xstrata	UK/Swiss	637							637
<b>MILLER POHANG COAL COMPANY PTY LIMITED</b>	Rio Tinto	UK		1,491						1,491
<b>MITSUI BENGALLA INVESTMENTS PTY LTD</b>	Mitsui	Japanese	25							25
<b>MOOLARBEN COAL MINES PTY LIMITED</b>	Yancoal	Chinese						14,019		14,019
<b>MOOLARBEN COAL OPERATIONS PTY LTD</b>	Yancoal	Chinese						727		727
<b>MT OWEN PTY LIMITED</b>	Xstrata	UK/Swiss		559						559
<b>MUSWELLBROOK COAL COMPANY PTY LIMITED</b>	Idemitsu	Japanese	3,625		201					3,826



<b>NAMOI MINING PTY LIMITED</b>	Whitehaven	Australian		1		1,708				1,708
<b>NAMOI MINING PTY LTD</b>	Whitehaven	Australian		1						1
<b>NARABRI COAL OPERATIONS PTY LTD</b>	Whitehaven	Australian					0			0
<b>NEWCASTLE WALLSEND COAL COMPANY PTY LTD</b>	Rio Tinto	UK		336						336
<b>NOVACOAL AUSTRALA PTY LIMITED</b>	Rio Tinto	Swiss	434	7,033						7,467
<b>NUCOAL RESOURCES LIMITED</b>				970						970
<b>OCEANIC COAL AUSTRALIA LIMITED</b>	Xstrata	UK/Swiss		851						851
<b>PEABODY BENGALLA INVESTMENTS PTY LIMITED</b>	Peabody	USA	1,951					438		2,388
<b>PEABODY PASTORAL HOLDINGS PTY LIMITED</b>	Peabody	USA			331			8,582		8,912
<b>RAVENSWORTH OPERATIONS PTY LTD</b>	Xstrata	UK/Swiss		2,105						2,105
<b>RESOURCE PACIFIC PTY LTD</b>	Xstrata	UK/Swiss		441						441
<b>RIX'S CREEK PTY LIMITED</b>	Bloomfield	Australian		1,494						1,494
<b>SAXONVALE COAL PTY LTD</b>	Xstrata	UK/Swiss	0	6,497	0					6,497
<b>SHENHUA WATERMARK COAL PTY LIMITED</b>	China Shenua	Chinese				19,866				19,866
<b>STRATFORD COAL PTY LIMITED</b>	Yancoal	Chinese							2,493	2,493
<b>TAIPOWER BENGALLA PTY LIMITED</b>	Rio Tinto	UK	2,221		4,312					6,533
<b>ULAN COAL MINES LIMITED</b>	Xstrata	UK/Swiss			1			13,761		13,762
<b>VALE AUSTRALIA (GC) PTY LTD</b>	Vale	Brazilian		252						252
<b>WAMBO COAL PTY LTD</b>	Peabody	USA		5,943						5,943
<b>WAMBO COAL TERMINAL PTY LTD</b>	Peabody	USA		101						101
<b>WAMBO MINING CORPORATION PTY LIMITED</b>	Peabody	USA		74						74
<b>WARKWORTH MINING LTD</b>	Rio Tinto	UK	846	4,367	910			792		6,916

<b>WERRIS CREEK COAL PTY LIMITED</b>	Whitehaven	Australian						3,594			3,594
<b>WHITE MINING LIMITED</b>	Whitehaven	Australian		60							60
<b>WHITEHAVEN COAL MINING LIMITED</b>	Whitehaven	Australian				8,109	15,413	1			23,522
<b>WILPINJONG COAL PTY LTD</b>	Peabody	USA							6,232		6,232
<b>XSTRATA COAL (NSW) PTY LIMITED</b>	Xstrata	UK/Swiss	519	186							706
<b>XSTRATA COAL PTY LIMITED</b>	Xstrata	UK/Swiss		11							11
<b>XSTRATA M ANGOOLA PTY LIMITED</b>	Xstrata	UK/Swiss	12,210								12,210
<b>XSTRATA MT OWEN PTY LIMITED</b>	Xstrata	UK/Swiss		4,317							4,317
<b>TOTAL</b>			<b>57,357</b>	<b>58,241</b>	<b>18,731</b>	<b>34,522</b>	<b>48,427</b>	<b>5,038</b>	<b>55,011</b>	<b>6,767</b>	<b>284,093</b>