



SPECIES AT RISK IN OUR WATERSHED

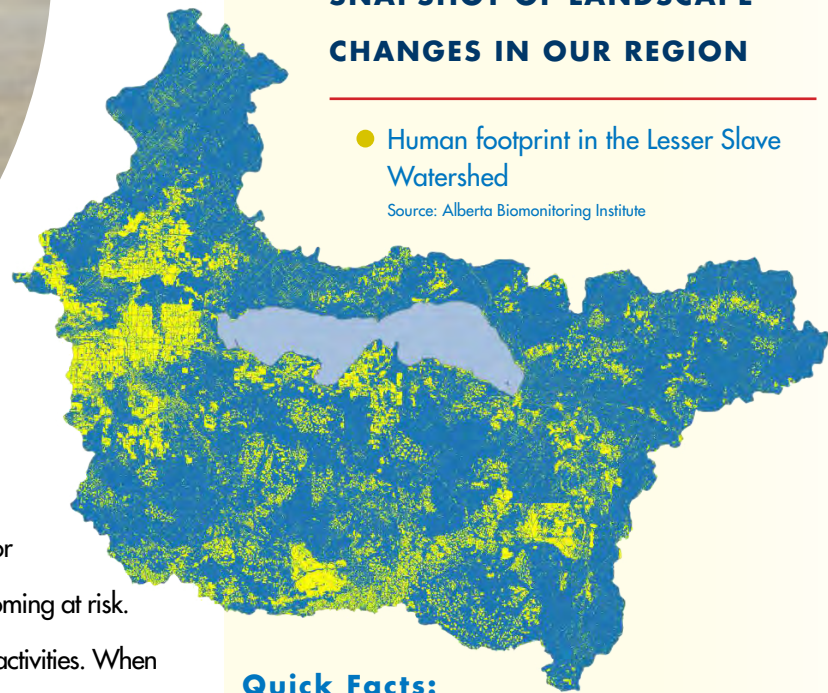
The **Lesser Slave Watershed Council (LSWC)** is in the process of developing an **Integrated Watershed Management Plan (IWMP)**. This process involves input from government, industry stakeholders, and individuals to address issues and concerns about our watershed, including ecosystem health, water quality, and sustainable water usage. Using the information we collect, the IWMP will assess these concerns and develop appropriate solutions.



SNAPSHOT OF LANDSCAPE CHANGES IN OUR REGION

- Human footprint in the Lesser Slave Watershed

Source: Alberta Biomonitoring Institute



“Species at Risk” include species that are at risk of extinction, or are in need of special management to prevent them from becoming at risk. Sensitive species are often placed at risk as a result of human activities. When species become endangered, it is an indicator of the declining health of ecosystems. When a species is lost, the benefits it might provide are gone forever.

There are 9 provincially recognized species at risk in the Lesser Slave Watershed.

THREATENED:

Species likely to become endangered if limiting factors are not reversed.

- 1 Woodland Caribou
- 2 Northern Leopard Frog
- 3 Peregrine Falcon
- 4 Western Grebe
- 5 Grizzly Bear



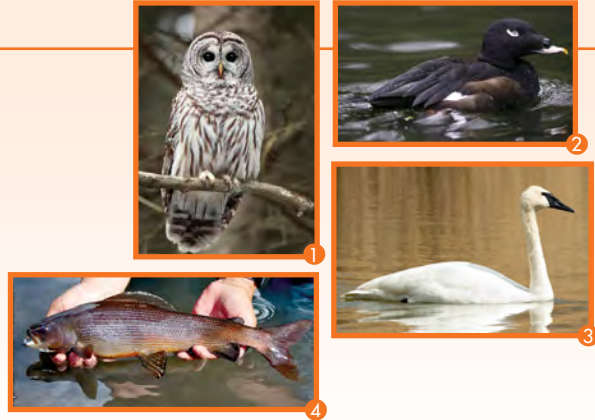
Quick Facts:

- Changes to the landscape are associated with agricultural land, roads, surface mines, rail lines, seismic lines, pipelines, well sites, and logging cutblocks, climate change, forest fire, and insect infestations.
- These changes add up to 22% of the area of the watershed, or 3.5 times the surface area of Lesser Slave Lake.



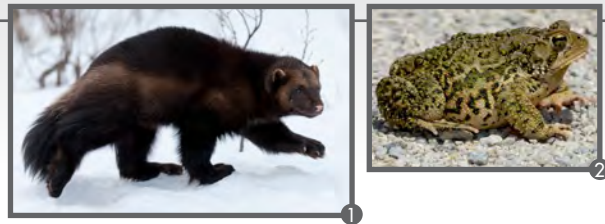
SPECIAL CONCERN: Species that are particularly sensitive to human activities or environmental events.

- ① Barred Owl
- ② White-Winged Scoter
- ③ Trumpeter Swan
- ④ Arctic Grayling



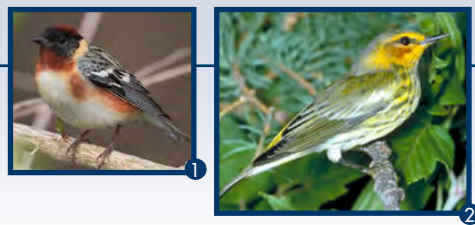
DATA DEFICIENT: Species for which there is insufficient scientific information to support a status designation.

- ① Wolverine
- ② Canadian Toad



IN PROGRESS: Species that are in the process of receiving a designation of threatened or special concern.

- ① Bay-Breasted Warbler
- ② Cape May Warbler



**PRACTICES TO
PROTECT SPECIES**

- Protect biologically diverse areas such as wetlands and riparian areas (land and native vegetation adjacent to streams and lakes).
- Identify and avoid environmentally sensitive areas during project planning.
- Reforestation and progressive reclamation of disturbed areas.
- Collaboration among users to minimize disturbances (roads, transmission lines, pipelines).
- Use of best management practices (advanced drilling practices, narrow seismic lines) to minimize disturbance footprints.
- Monitoring and research to improve practices and technologies.

WE WANT
TO HEAR
FROM YOU

The health of our watershed impacts the well-being of our environment, plants and animals, and the people who live and work here. The more information we have, the better equipped we are to offer sustainable, effective solutions to issues facing our watershed.

Your opinions and experiences are a crucial part of a successful plan.

We want to hear from you! To talk to us, learn more, or get involved, please call the

LSWC at **780-523-9800** or visit **www.lswc.ca**