



# League of Women Voters® of Anne Arundel County, MD

## ***VOTERS' GUIDE*** **2016 GENERAL ELECTION**

**Tuesday, November 8, 2016 Polls Open 7 AM / Close 8 PM**

**Verify current voter registration:**

[voterservices.elections.maryland.gov/  
VoterSearch](http://voterservices.elections.maryland.gov/VoterSearch)

**Deadline to register or change  
party affiliation online:\***

Tuesday, October 18, 9 PM

**Early voting dates:**

October 27 - November 3,  
8 AM - 8 PM

**Deadline to request absentee ballot:**

Mailed to you: Tuesday, November 1

Downloaded: Friday, November 4

In person: Tuesday, November 8

**Contact County Board of Elections:**

(410) 222-6600

6740 Baymeadow Drive,

Glen Burnie, MD 21060

[elections@aacounty.org](mailto:elections@aacounty.org)

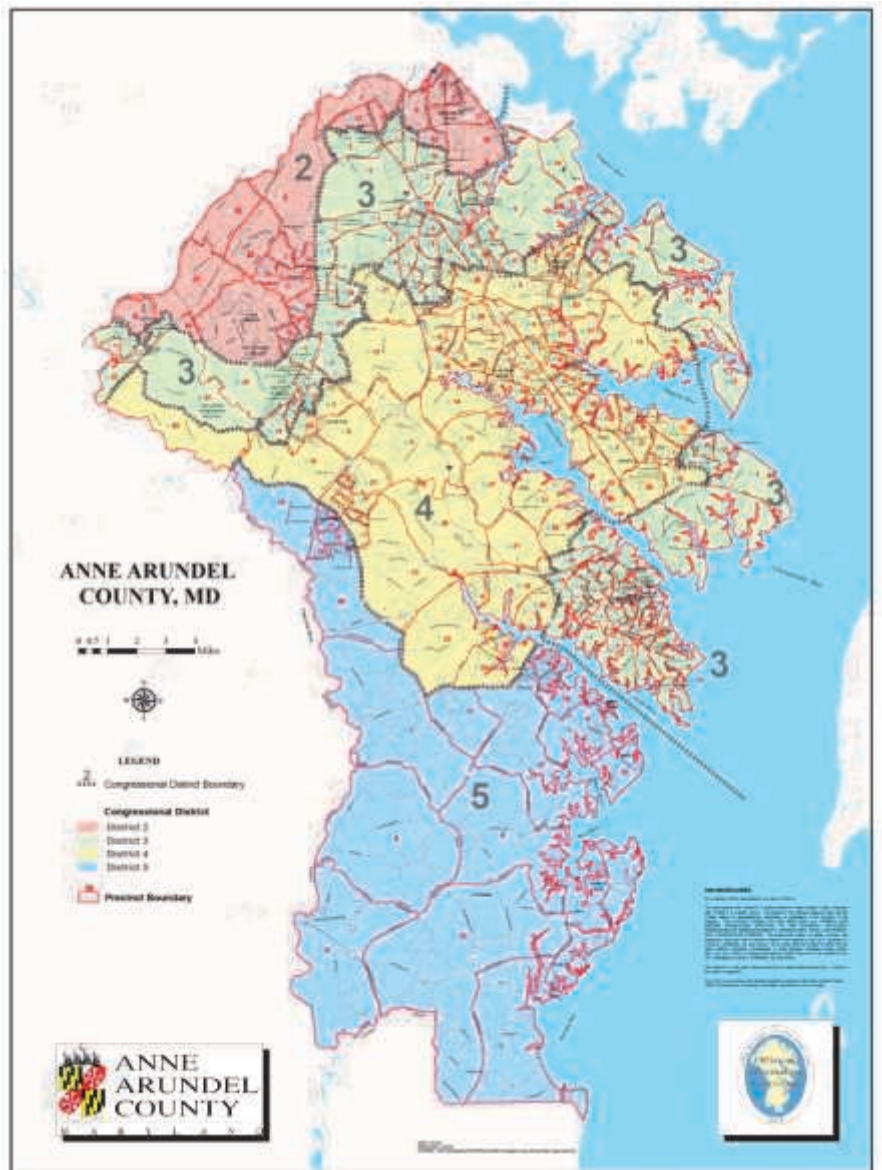
[aacounty.org/elections](http://aacounty.org/elections)

**Download this *Voters' Guide*:**

[lwvaacmd.org](http://lwvaacmd.org); click on "Publications"

**Get up-to-date election and  
candidate information:**

**[VOTE411.org](http://VOTE411.org)**



\*Beginning this year, qualified citizens  
may register to vote at early voting centers.  
See page 3 for more information.

**PUBLICATION DATE: SEPTEMBER 24, 2016**



# CONGRESSIONAL CANDIDATES FORUM

☆☆☆☆☆☆☆☆☆☆ FOR MARYLAND DISTRICT 3 ☆☆☆☆☆☆☆☆☆☆



**MARK PLASTER** (Republican Party)



**JOHN SARBANES** (Democratic Party)



**NNABU EZE** (Green Party)

VOTERS OF ANNE ARUNDEL COUNTY

**Ask questions.  
Get answers.  
Hear issues defined.**

☆☆☆☆☆☆☆☆☆☆☆☆☆☆☆☆☆☆☆☆☆☆☆☆☆☆☆☆☆☆

**WEDNESDAY, OCTOBER 26, 2016 // 7 PM-9 PM**

Woods Memorial Presbyterian | Church Auditorium  
611 Baltimore Annapolis Boulevard  
Severna Park, MD 21146

**FORUM MODERATOR:**

**Susan Kopen Katcef**

Broadcast Bureau Director, Capital News Service, Philip Merrill College of Journalism, University of Maryland



**SPONSOR:**

The Education Fund of the League of Women Voters of Anne Arundel County, a 501c3

nonprofit, is a nonpartisan political organization that encourages informed and active participation in government and works to increase understanding of major public policies.

**CO-SPONSOR:**

The American Association of University Women, Anne Arundel County branch, seeks to advance equity for women and girls of all ages through advocacy, education, and research, and to speak to the needs, aspirations, and concerns of the county's women.

For more information, call 410-269-0232 | [lwvaacmd.org](http://lwvaacmd.org) | [lwvaacmd@gmail.com](mailto:lwvaacmd@gmail.com)

Go to [VOTE411.org](http://VOTE411.org) to find your...

- Candidates' views on the issues in their own words
- Polling place
- Congressional district
- Questions answered about voter registration, absentee voting, early voting and more.



Scan this code with your smart phone to go to [VOTE411.org](http://VOTE411.org)

[VOTE411.org](http://VOTE411.org) is *your* Voters' Guide, up-to-date and available 24/7 online.

How to build your personal Voters' Guide on [VOTE411.org](http://VOTE411.org):

- ⇒Go to [VOTE411.org](http://VOTE411.org) using your preferred web browser;
- ⇒Enter your residential address;
- ⇒Select "Get personalized information on candidates and issues;"
- ⇒Click on "Show My Races;"
- ⇒Select candidates in each race to compare their responses.

### ***Internet down? No computer? NO PROBLEM!***

The League of Women Voters of Anne Arundel County's print *Voters' Guide* for the 2016 General Election may be found at the reference desk of your local public library, and on the League's website, [lwvaacmd.org](http://lwvaacmd.org). Copies are also available by request; email [lwvaacmd@gmail.com](mailto:lwvaacmd@gmail.com). If requesting a copy by regular mail, please allow time for delivery; the General Election is on Tuesday, November 8, 2016, from 7 AM to 8 PM.

[VOTE411.org](http://VOTE411.org) and the print *Voters' Guide* for the 2016 General Election are provided as a public service by the 501(c)(3) Education Fund of the League of Women Voters of Anne Arundel County. Tax-deductible contributions in support of these valuable voter resources are greatly appreciated, and may be sent to the treasurer.

Niecy Chambers and  
Susan Elson, Co-Presidents

Alfa Stevens, Treasurer  
7923 Carriage Drive  
Severn, MD 21144

Website: [lwvaacmd.org](http://lwvaacmd.org)  
Email: [lwvaacmd@gmail.com](mailto:lwvaacmd@gmail.com)

