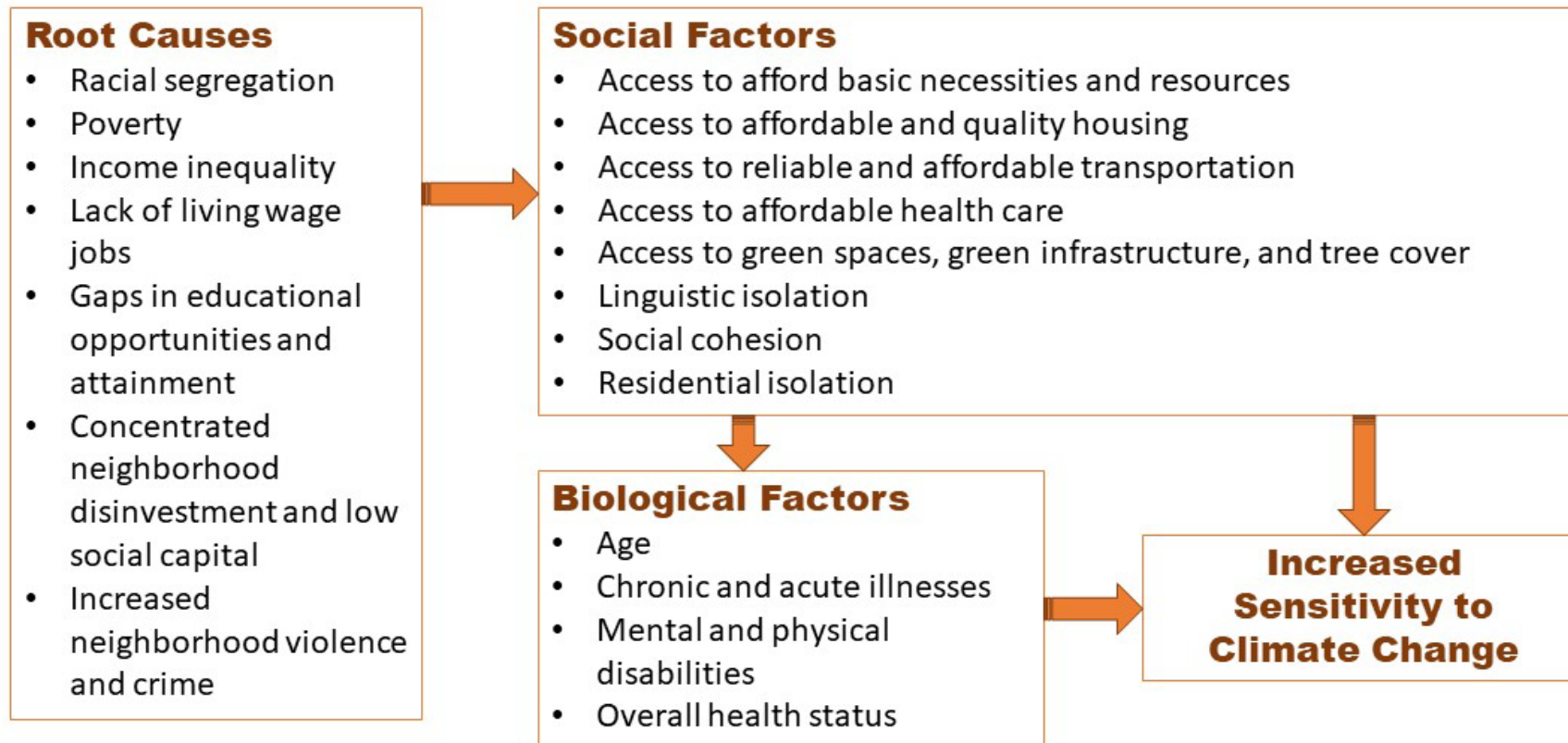


Climate Equity Assessment

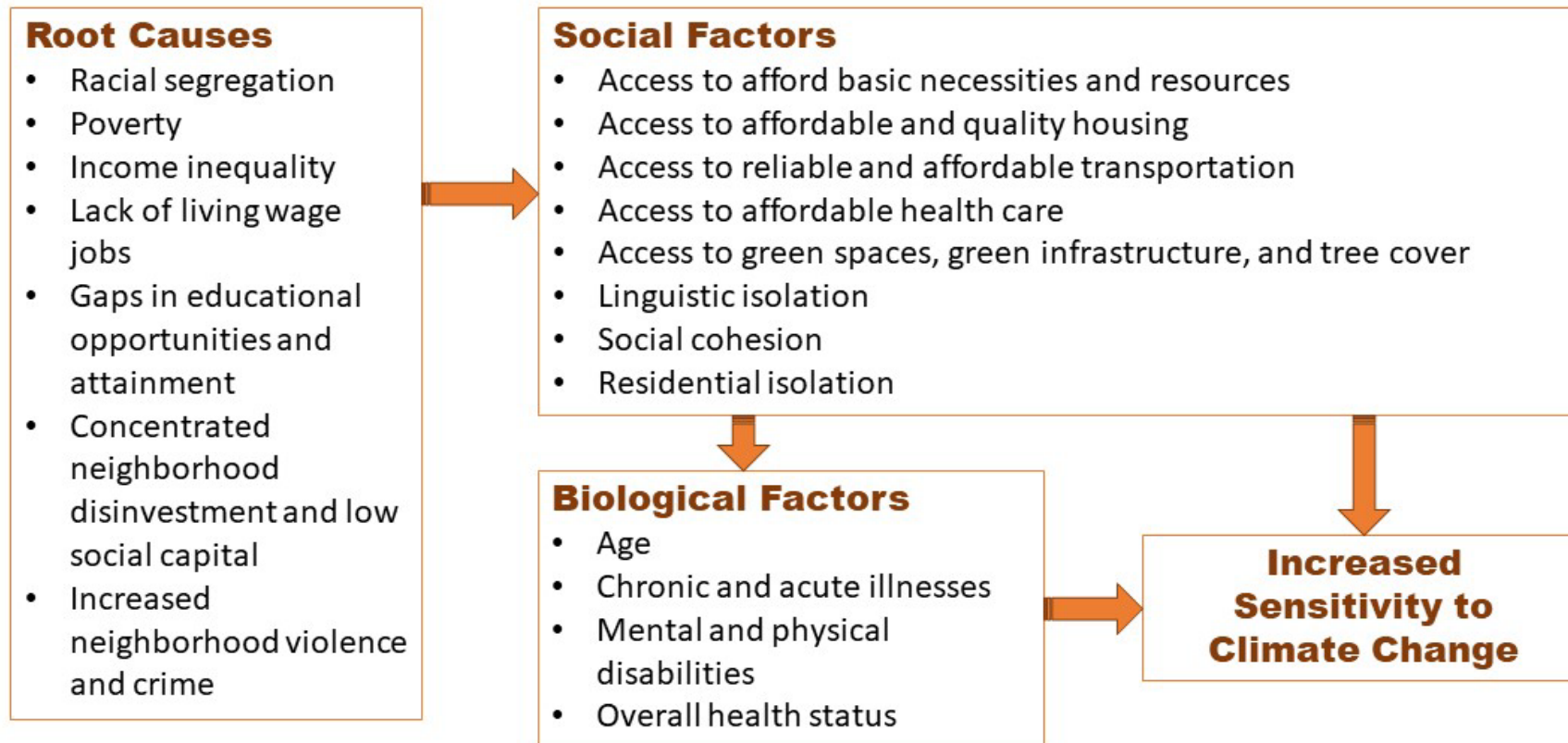
Climate Action Steering Committee

July 28, 2021

Climate change impacts everyone, but some are more vulnerable...



Climate mitigation action is not inherently just.



Equity in TCMP

Guiding Principle #7

- *Consider how the costs and benefits of mitigation actions will be shared across all communities: including both urban and rural areas, low-income households, communities of color, and other populations that have historically been impacted by environmental hazards or are otherwise vulnerable to climate impacts.*

Equity Resources

- Equity Scan for the 2013 Portland/Multnomah County Climate Action Plan Update (2013)
- The Local and Regional Government Alliance on Race & Equity Racial Equity Toolkit (2016)
- Urban Sustainability Directors Network Guide to Equitable Community-Driven Climate Preparedness Planning (2017)
- The Georgetown Climate Center Equitable Adaptation Legal & Policy Toolkit
- The Greenlining Institute, Making Equity Real in Climate Adaptation and Community Resilience Policies and Programs Guidebook (2019)
- Maine Climate Council, Assessing the Potential Equity Outcomes of Maine's Climate Action Plan (2020)
- Sustainable & Resilient Frontline Communities section of the King County Strategic Climate Action Plan (2020)
- Front and Centered, Accelerating a Just Transition in Washington State (2020)

Strategy Assessment

What impacted or vulnerable communities could benefit from or be burdened by this strategy or action?

How could the strategy or action benefit or burden vulnerable populations, increase or decrease equity? Any unintended consequences?

What are ways to enhance positive impacts or reduce negative impacts of the strategy or action?

Existing Disparities

Buildings & Energy	<ul style="list-style-type: none">• Access to/cost of housing• Housing quality/environmental conditions• Energy cost burden• Heat sources
Transportation & Land Use	<ul style="list-style-type: none">• Access to/cost of transportation• Air quality exposure• Health outcomes• Car ownership/transit use• Broadband/internet access
Water & Waste	<ul style="list-style-type: none">• Utility costs• Access to infrastructure
Agriculture & Open Space	<ul style="list-style-type: none">• Access to open space• Tree canopy cover
Cross-cutting	<ul style="list-style-type: none">• Awareness of/capacity to participate in incentive or education programs• Representation in workforce/contracting• Access to capital/lending

Environmental Exposures & Effects*

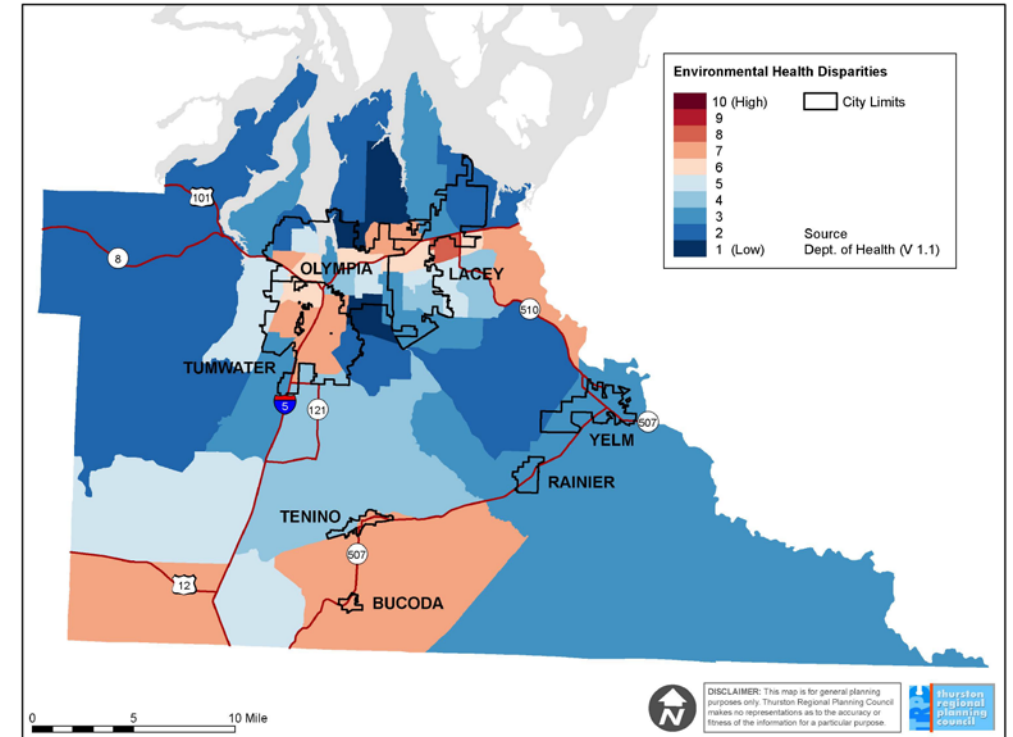


Sensitive Populations & Socioeconomic Factors*



Disparity Rank

*Icons shown do not represent all 19 indicators on the map



Health Disparities

- Washington State Environmental Health Disparities Map: <https://www.doh.wa.gov/DataandStatisticalReports/WashingtonTrackingNetworkWTN/InformationbyLocation/WashingtonEnvironmentalHealthDisparitiesMap>

Ways to
enhance
positive
impacts &
reduce burdens

Better define and understand vulnerable and impacted communities

Target outreach about and/or access to programs to impacted communities.

Develop incentives with input from impacted communities.

Pair broad requirements or regulations with targeted funding, resources, or allowances for impacted communities

Contracting/hiring targets for underrepresented populations.

Track equity outcomes of state and local actions

Discussion

How would CASC members like to see equity included in implementation of climate mitigation actions?

Are there existing efforts at jurisdictions that should be coordinated?