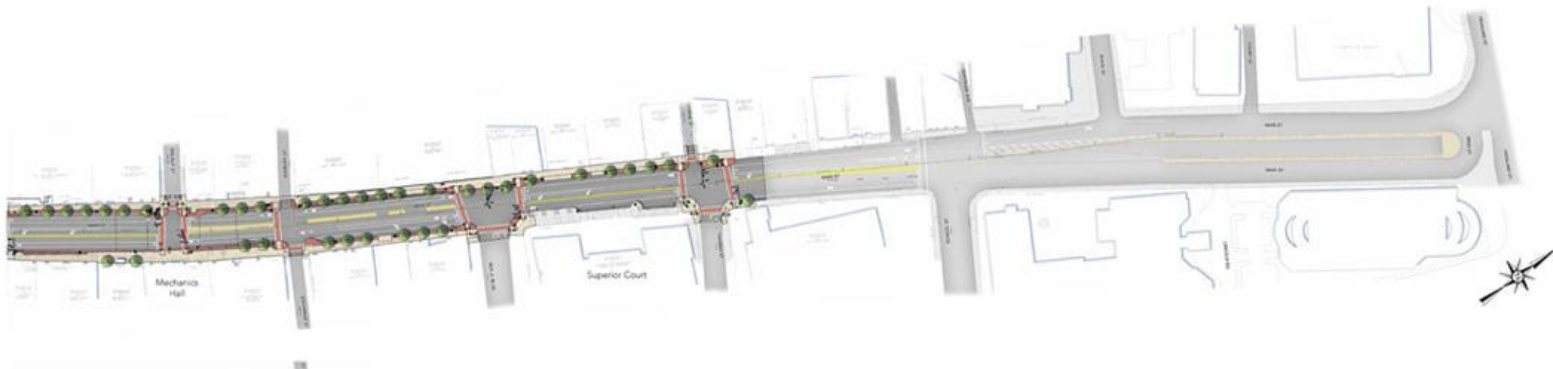


COMPLETE STREETS IN WORCESTER



Main Street - Streetscape Improvements
Worcester, Massachusetts

Design Plan
September 2016



Brian Pigeon
Senior Transportation Planner
City of Worcester

What is a Complete Street?

“Complete Streets are streets for everyone. They are designed and operated to enable safe access for all users, including pedestrians, bicyclists, motorists and transit riders of all ages and abilities.

Complete Streets make it easy to cross the street, walk to shops, and bicycle to work. They allow buses to run on time and make it safe for people to walk to and from train stations.”

-National Complete Streets Coalition

Main Street Reimagined

- A complete reconstruction of Main Street from Lincoln Square to Chandler and Madison Streets as a complete street with bike lanes, landscaping, wider sidewalks and street furnishings.
- Imagines Main Street as a destination rather than a waypoint.
- Aims to increase the walkability and vibrancy of Main Street with artwork, wayfinding and connections between existing cultural nodes.

Main Street Reimagined

“This is a reimagining of Main Street for all of the users of Main Street - not just for vehicles - but all of its users.”

-Edward M. Augustus Jr., City Manager



Source: MassLive.com

Current Design at Main Street and Elm Street



Main Street CBD Improvements, Worcester, MA



7' 6' 11' 11' 11' 6'

Looking North at Elm Street

Current Design at Main Street and Walnut Street



Mechanics Hall



Main Street CBD Improvements, Worcester, MA



Looking North at Walnut Street

Current design at Main Street north of Exchange Street



Palladium



Main Street CBD Improvements, Worcester, MA



Looking North
Exchange Street to MLK Jr. Boulevard

Hanover Theater & Francis Carroll Plaza



Francis Carroll Plaza (conceptual)



Wayfinding and Art

- The City is currently accepting proposals for artists and designers to create benches and bike racks for the Main Street Reimagined project as well as art panels for the first phase of the Worcester Wayfinding project.
- 14 wayfinding signs will be placed throughout the city reflecting the city's history, culture and community through the themes of creativity, innovation and revolution.



COW Complete Streets Policy

- In December 2017, the City of Worcester adopted a Complete Streets Policy which was approved by MassDOT with a score of 97 out of a possible 100 points.
- The City now advances to Tier 2 status in the MassDOT Complete Streets program and will develop a Complete Streets Prioritization plan later this year.
- The City will now work to incorporate Complete Streets in all transportation projects.

Complete Streets Implementation

- The Complete Streets policy established the Transportation Advisory Group (TAG) which will help develop guiding policies, provide feedback on transportation proposals and promote interdepartmental cooperation.

TAG members represent the following City departments:

- City Manager's Office
- Economic Development
- Human Rights & Disabilities
- Planning
- Public Health
- Public Works
- Worcester Fire Department
- Worcester Police Department

As well as:

- Central Mass. Regional Planning Commission
- Chamber of Commerce
- WalkBikeWorcester
- WPI

Implementation Actions

Ongoing:

- TAG will review all construction, reconstruction and resurfacing projects.
- Projects before Planning Board and Zoning Board are reviewed relative to complete streets objectives.

To be Completed:

- Planning department will coordinate Long-Range Transportation Plan as part of upcoming Citywide Master Plan.
- Public Works and the TAG will develop a Complete Streets Checklist for project review.
- Complete Streets Prioritization Plan

Questions?

planning@worcesterma.gov