

WEMO Transportation Management Area 3 (TMA 3) Alternative 5

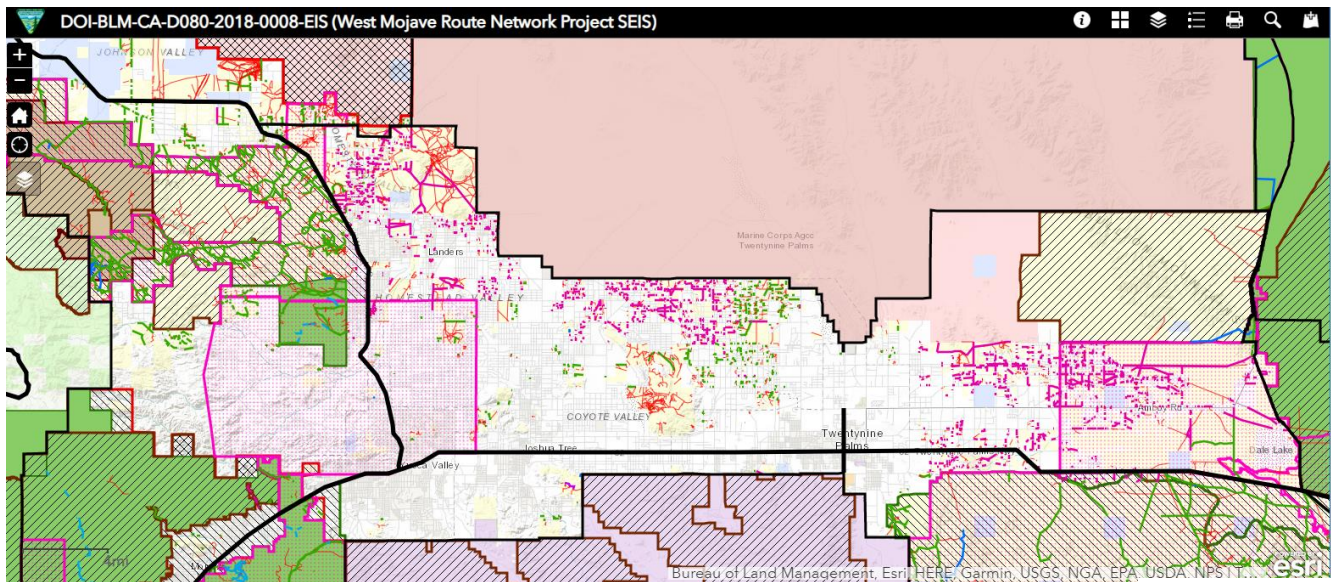


Figure 1. TMA 3

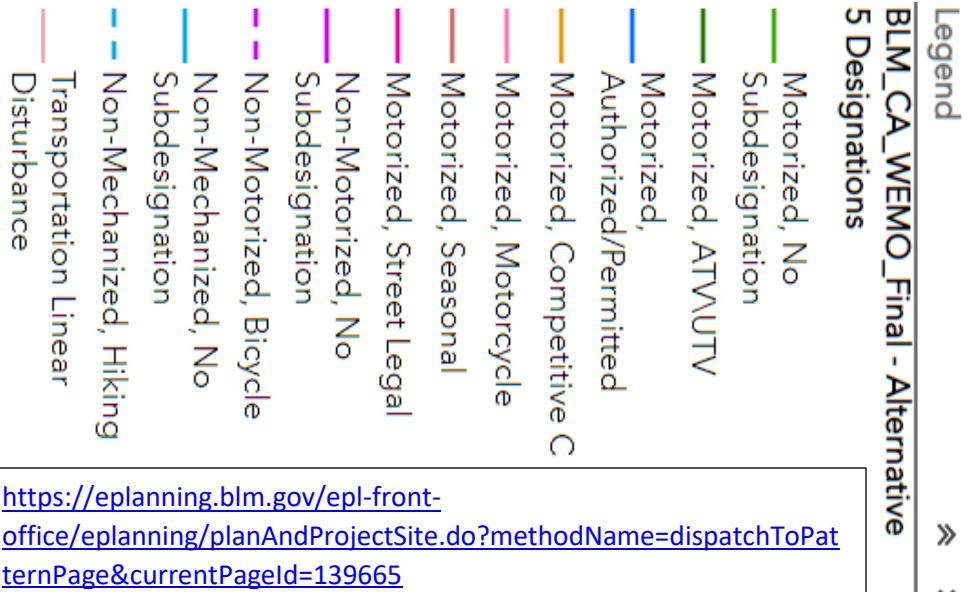
Alternative 5 is the Proposed Action Alternative. Alternative 5 considers the recommendations of cooperating agencies, the public, and BLM specialists and reflects the best combination of decisions to achieve BLM’s goals and policies, meet the purpose and need, and address the key planning issues. (from BLM website)

Transportation Linear Disturbance (TLD) Identifies human made linear features that are not part of the BLM’s transportation system. These disturbances may include engineered (planned) as well as unplanned single- and two-tracked linear features. (from BLM website)

Motorized, Street Legal
All roads in County Service Areas (CSA) and County Maintained Roads.

Motorized, No Subdesignations
All community roads are subject to the County Code Sec. 28.0403

Motorized, ATV/UTV
Not in TMA 3



<https://eplanning.blm.gov/epl-front-office/eplanning/planAndProjectSite.do?methodName=dispatchToPaternalPage¤tPageId=139665>

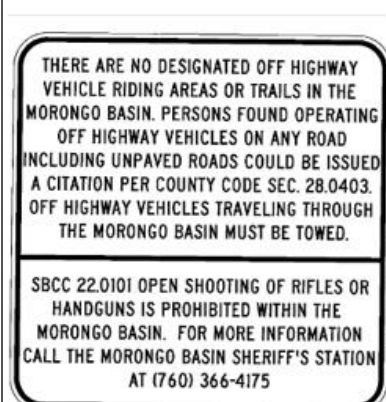


Figure 2 Sign showing No OHV Riding Areas in Morongo Basin. Signs are 42” by 42”



Figure 3 Cover of brochure developed to support Code Sec. 28.0403. See Map Figure 4.

The County OHV Ordinance and Code Section 28.0403 apply to the unincorporated areas throughout San Bernardino County.

Therefore, **WEMO** routes cannot begin or end on county land unless there is a staging area to accommodate trucks or trailers for towing. Routes beginning on private property must have written permission from owner on person.