

Homeless Solutions for Boulder County

Presentation to MDHI Coordinating Committee
January 25, 2019



Agenda

- Overview
- Why did we change our approach?
- What's new with this approach?
- Explanation of Services
- Progress & Next steps

What is it and who's involved?

- **What is it?**

- An effort to bring together all related stakeholders to provide coordinated system of services for single adults experiencing homelessness

- **Who is involved?**

- Partners include Boulder County, City of Boulder, City of Longmont, homeless service providers, PHAs, and other stakeholders

Overall goal

Provide adults experiencing homelessness with targeted, responsive services to support quick, stable housing solutions.

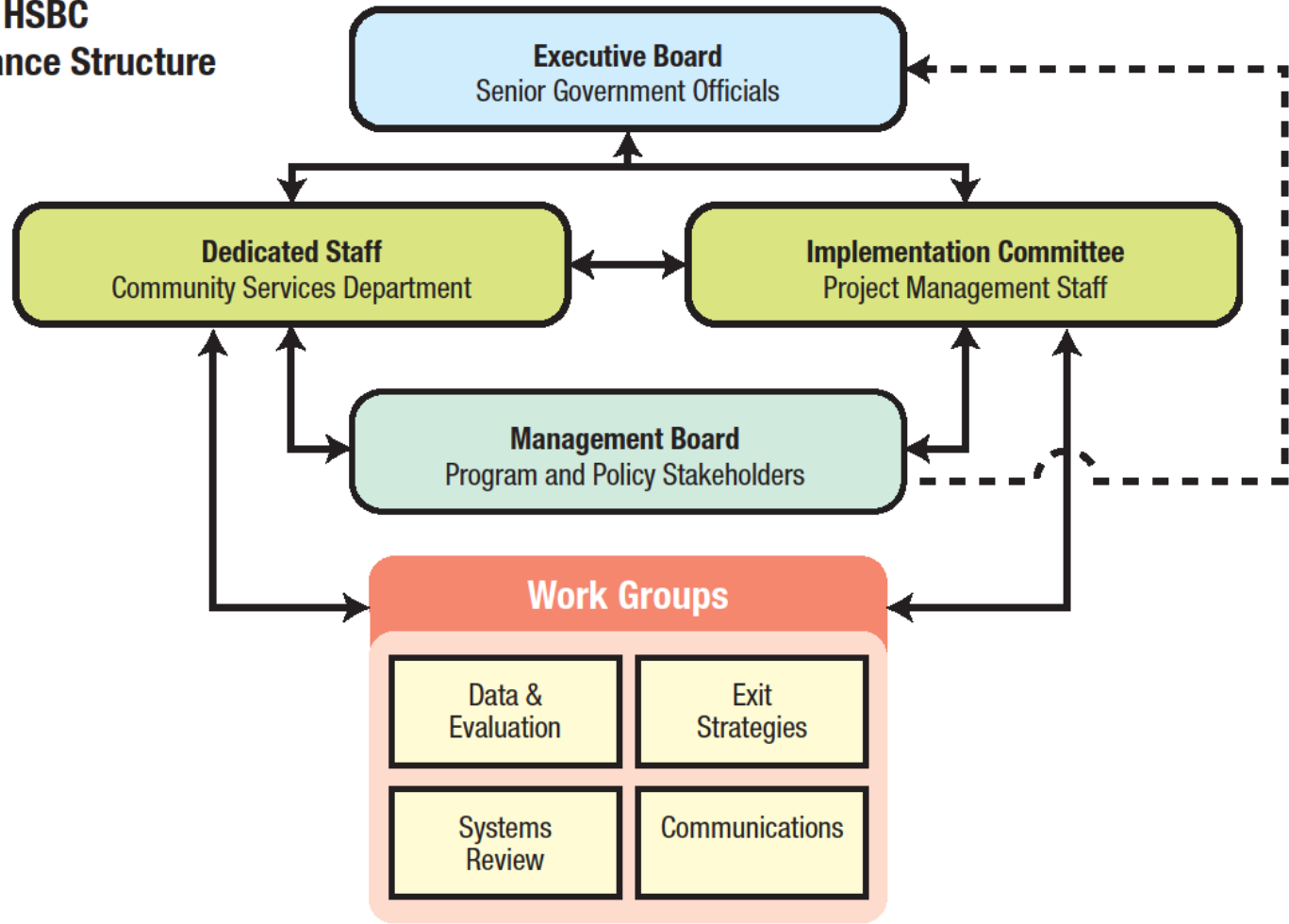
Why did we change our approach?

- Community efforts identified areas for improvement:
 - Longmont Homeless Services Assessment
 - City of Boulder Working Group Process
 - 10-year Plan to End Homelessness Board
- Better align system with evidence-based interventions and national best practices

What's new with this approach?

| Previous Approach | New Approach |
|---|---|
| <ul style="list-style-type: none">• Focused providing emergency services• Access to services not coordinated, and services not prioritized• Based on individual agency approach | <ul style="list-style-type: none">• Focuses on housing solutions• Coordinates entry into services to support prioritization• Based on coordinated system approach<ul style="list-style-type: none">• Creates defined paths tailored to client needs• Evaluation-driven |

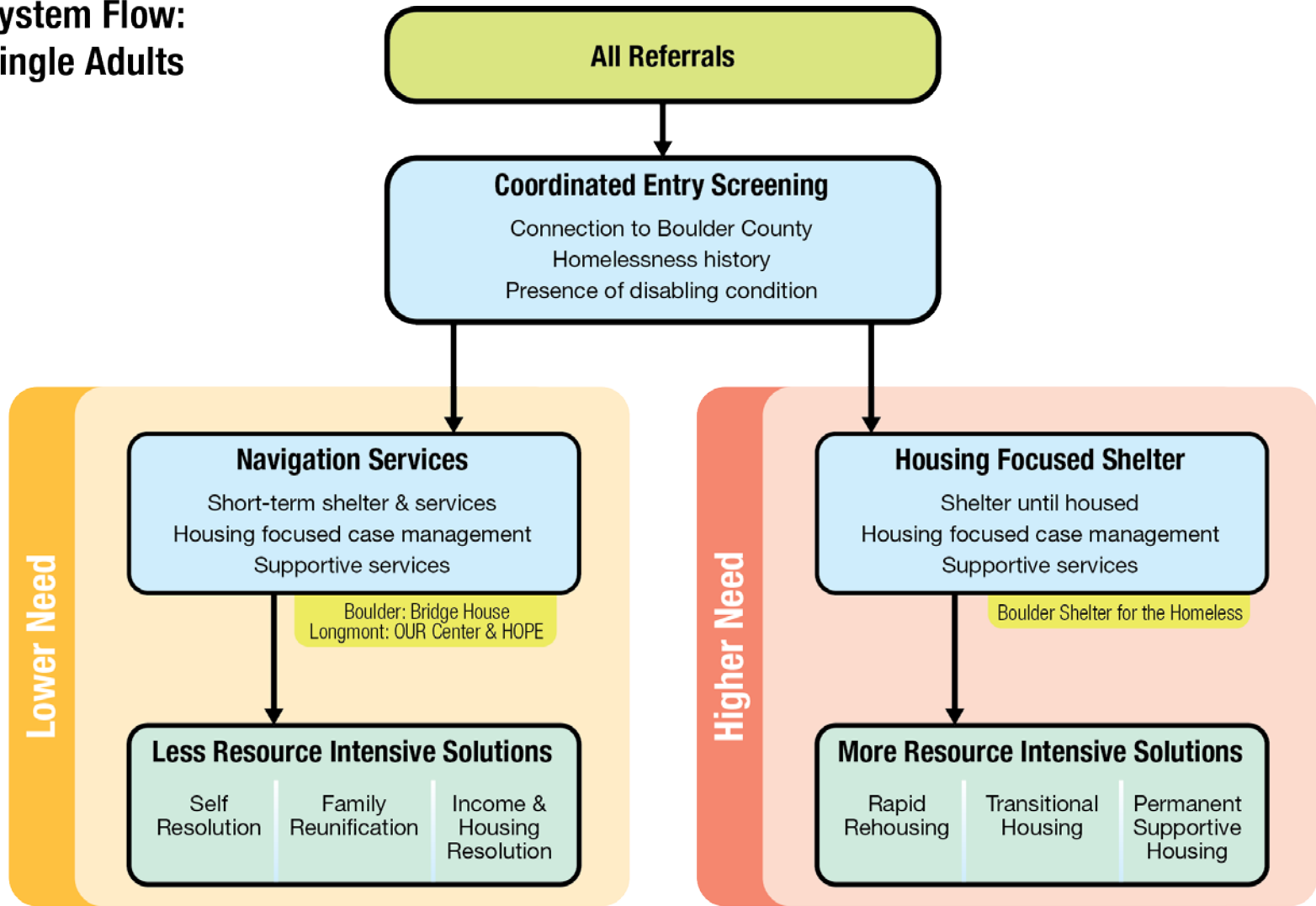
HSBC Governance Structure





◦ **EXPLANATION OF SERVICES**

System Flow: Single Adults



Navigation Services

- Target population:
 - Lower-need individuals with lower barriers to obtaining and maintaining permanent housing and individuals new to Boulder County
- Services:
 - Duration: Short-term (~ 7 days)
 - Short-term overnight sheltering if needed
 - Supportive services: case management, mediation, financial assistance, legal assistance, reunification assistance, links to mainstream supports, etc.

Housing-Focused Shelter

- Target population:
 - Moderate- and high-needs individuals with connection to Boulder County who need more intensive supports to obtain and maintain housing
- Services:
 - Can get a guaranteed bed at Boulder Shelter for the Homeless until housed
 - Housing-focused case management
 - Wrap-around supports aligned with housing plan



◦ **YEAR 1 DATA AND
OUTCOMES**

Who are we serving?

**HSBC
Clients
(2,448)**



Many have strong local connections

47% have been in Boulder County 2 years or longer, and 25% report family in the County.



Many have experienced homelessness for long periods

55% report experiencing homelessness 12+ months of the past 3 years.

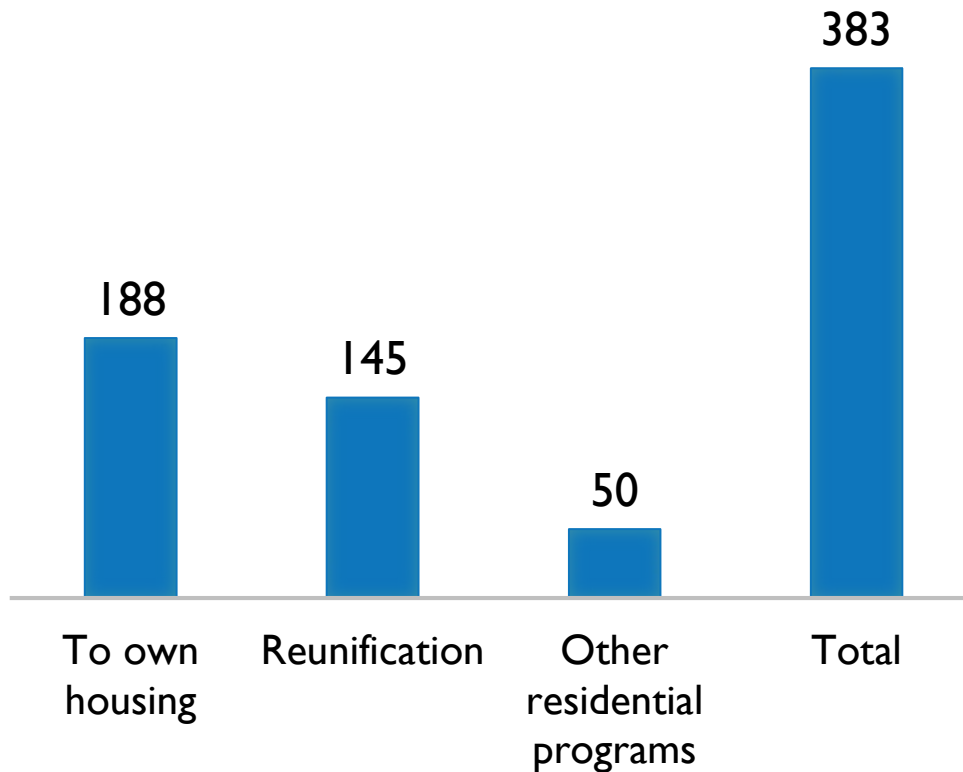


Most report a disabling condition

70% report a disabling condition that affects their ability to live independently.

HSBC Year 1 Outcomes

Successful Outcomes
Oct. 2017 - Sept. 2018



15% of clients are known to exit HSBC services to a successful outcome



° **PROGRESS AND NEXT STEPS**

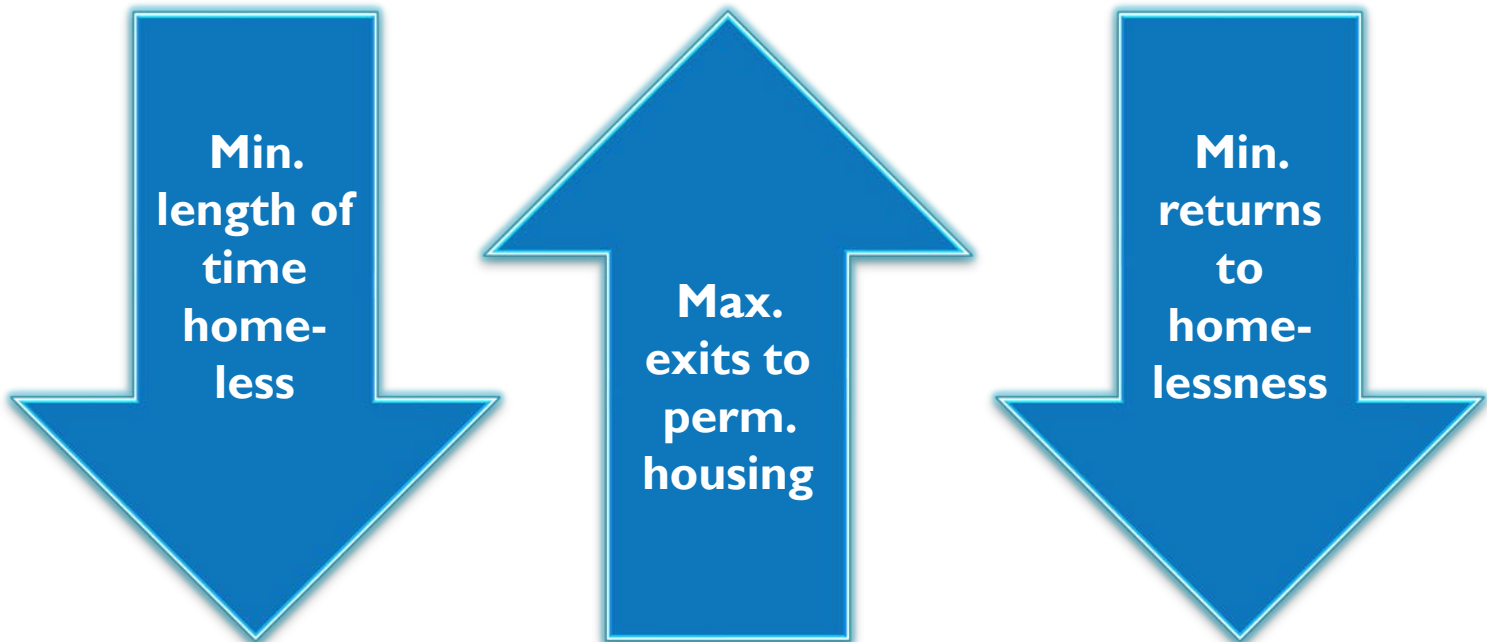
Housing Resource Progress to Date

- **New rent assistance resources**
 - 11 PSH vouchers funded by City of Boulder
 - 7 additional HUD-VASH vouchers
 - 20 DOH vouchers to convert TH units to PSH
 - 28 new HCVs to Boulder Housing Partners for people under 62 with a disabling condition
- **New units**
 - 70 units of proposed PSH production over the next three years in City of Boulder
- **New support service dollars**
 - \$2.4 million over 5 years for supportive services from SAMHSA



Next Steps

- Review of first year and identify improvements
- Continue to build data infrastructure in system
- Track KPIs to support perf. management
- Continue to pursue new resources



Where to go for more information:

<https://www.bouldercounty.org/government/boards-and-commissions/boulder-county-regional-homeless-systems-management/>

○ **QUESTIONS?**