

How does Line 5 benefit Michigan?

Fueling our communities

Line 5 carries the light crude oil, light synthetic crude oil and natural gas liquids which are refined into the propane and transportation fuels Michigan residents use every day.

Enbridge meets



of the statewide propane demand.

Michigan has the highest rate of residential propane-consumption in the U.S. with more than **320,000 homes¹** heated using propane.



The light crude oil transported by line 5 feeds the Michigan and surrounding economies with:

Enough gas to fill

1 million

passenger cars and trucks a day;



Enough diesel to fill

6,000 semi-trailers a day;



Enough jet fuel to fly

883 commercial planes per day; and



Enough propane to heat

300,000

homes per year (with 1,100 sq ft of living space).



Line 5 meets 65% of the propane



demand in the Upper Peninsula.

More than **10,000 vehicles²**



operate on propane that can be fueled at over 500 sites throughout the state.

Enbridge invested more than

\$185,000

in community-strengthening initiatives across Michigan—and supported numerous not-for-profit agencies in the state—in the areas of health and safety, education, environment, and community.

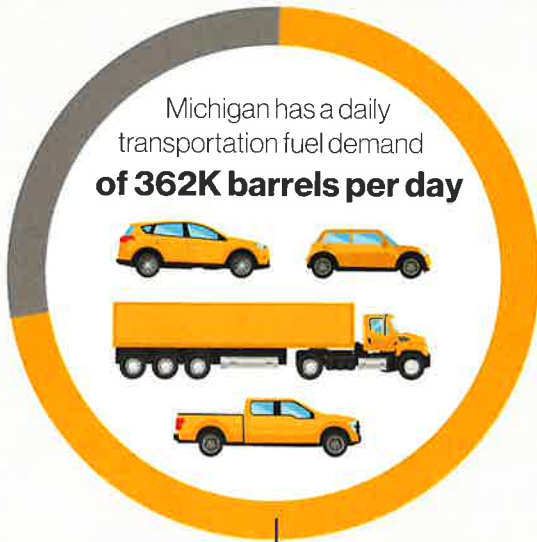
¹According to the Michigan Public Service Commission website.

²According to the Michigan Propane Gas Association website.

All numbers use 2015 data unless otherwise stated.

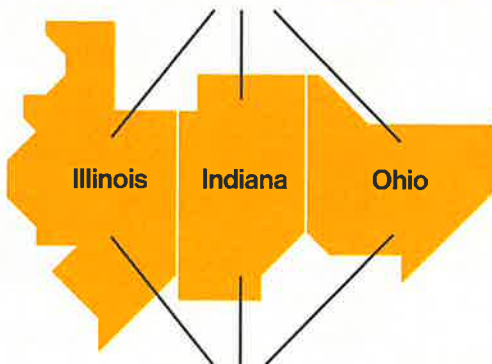
Fueling our oil and gas industry

The oil and gas industry plays an important role in Michigan. As a member of that industry, Enbridge makes a significant contribution to the state through its Line 5 and other pipelines.



30% of the demand is met by the Marathon refinery in Detroit which receives the vast majority of its crude oil from Enbridge and Line 5.

The remaining 70% of the demand is met by importing refined product from nearby area refineries.



These refineries are also fueled by Line 5 and other Enbridge pipelines.



Line 5 transports nearly

80% of Michigan-produced crude

to regional refineries.



Since it entered into service, Line 5 has safely transported about



80 million barrels

of Michigan-produced light crude oil to refineries in the region.



That is

14,000

barrels per day

of Michigan-produced crude oil.

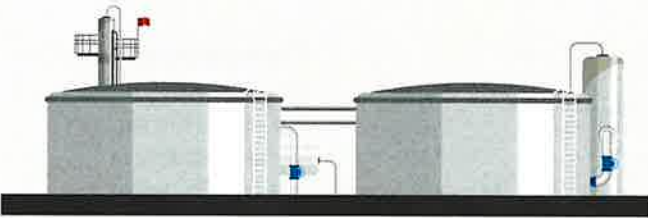
Of Michigan's **83** counties, **82** have economic activity resulting from the presence of the oil and natural gas industry.³



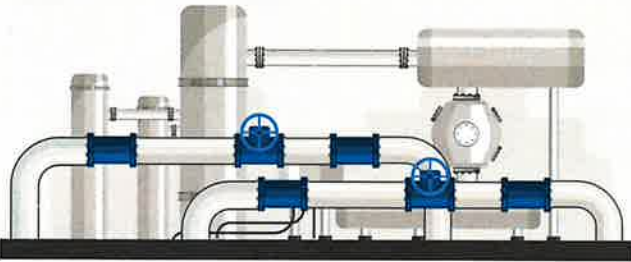
Fueling our economy

Enbridge's people live and work in communities like yours as colleagues, neighbors and friends. And, as a part of the community, Enbridge helps fuel quality of life through ongoing tax revenue, which is used for schools, infrastructure (roads and bridges), health and wellness, recreation, transportation and other services.

In 2015, Enbridge paid more than
\$7.94 million
in salary to its Michigan-based employees.



Enbridge operates a terminal and tankage facility at **Gould City** and **Bay City** and pump stations and related facilities at **Gogebic, Iron River, Rapid River, Manistique, Naubinway, St. Ignace, Mackinaw City, Indian River, Lewiston, West Branch, North Branch and Marysville.**



Enbridge spent
\$144 million

in Michigan on purchasing pipe steel and equipment, system-integrity-related investments and capital leases.



In the last three years:*

*Reflects spending on entire length of Line 5



The oil and natural gas industry in Michigan directly and indirectly supports 47,105 jobs.



Enbridge paid
\$38.51 million

in property taxes across Michigan for its pipelines and related facilities such as storage facilities and pump stations.

Enbridge paid
\$2.34 million

in sales and use taxes across the state of Michigan.



³According to an economics study from the Michigan Oil and Gas Association, May 2016.