



MICHIGAN DEPARTMENT OF
ENVIRONMENT, GREAT LAKES, AND ENERGY

Climate, Justice & Equity

Regina Strong
Environmental Justice Public Advocate
May 5, 2020
strongr1@Michigan.gov

Executive Order

- Governor Whitmer created the Office of the Environmental Justice Public Advocate and the role of Environmental Justice Public Advocate in Executive Order 2019-06
- The Office of Climate and Energy was also created as part of EO 2019-06 within the Department of Environment, Great Lakes and Energy.
- Both offices are working collaboratively to ensure that the state moves forward to address climate impacts through an equity lens.

Action & Engagement

- Michigan Advisory Council on Environmental Justice (MAC EJ)
- Climate Task Force (coming soon)
- Just Transition (coming soon)
- More to come...

Michigan Advisory Council on Environmental Justice



Interagency EJ Response Team

- Participating departments identified through the executive order, include:
 - Natural Resources
 - Civil Rights
 - Transportation
 - Public Service Commission
 - Strategic Fund/Economic Development
 - Agriculture and Rural Development
 - Health and Human Services

Interagency EJ Response Team

- Work Groups have been established, including:
 - Planning and Policy
 - Communications and Outreach
 - Research and Data
 - Training

COVID 19 and EJ

- EJ communities hit hard by COVID 19
- Water reconnections and communities without water
- Air pollution impacted communities (Harvard Study)
- Opportunities to address systemic inequities that impact communities.

Disparate Impact Factors



Proximity and Exposure



Unique Exposure Pathways



Physical Infrastructure



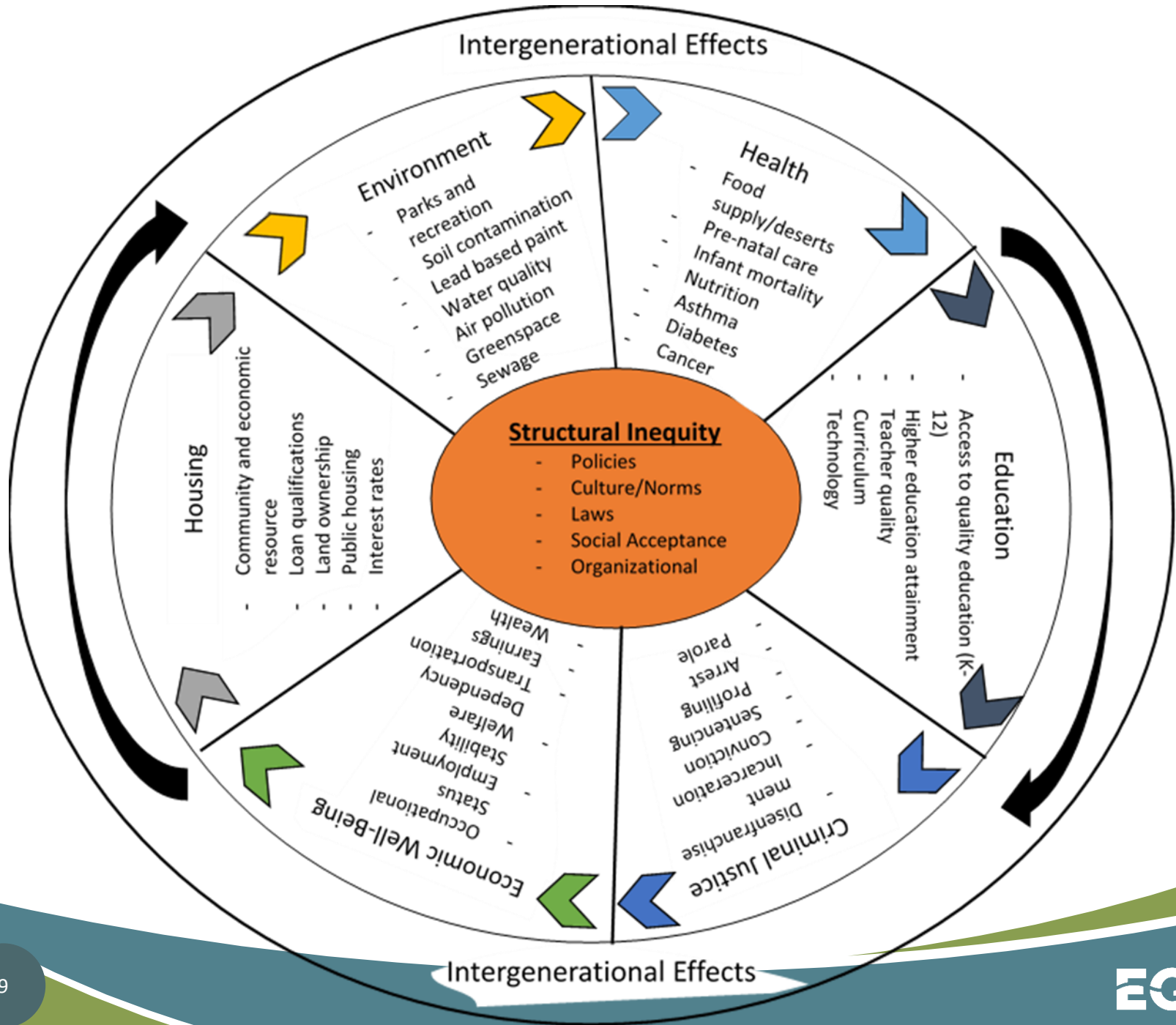
Cumulative Impacts



Public Participation



Vulnerable Populations



An Equitable Lens for Our Work

- How will being more intentionally inclusive enhance our work?
- How can we think of equity as an element of how we move forward on climate and not an add on or something extra?
- How can we learn to value diverse perspectives and use a broader lens to view what we do and why?
- How do we let communities speak for themselves?

The Intersection of Climate & Equity

- Prioritize saving people and the planet
- Engage frontline communities in renewable energy future
- Consider energy siting options in community transitions
- Prioritize electrification of public transportation, as well as personal vehicles

Climate & Equity Considerations

- Look at over-burdened communities and assess cumulative impact as mitigation strategies are developed.
- Consider just transition for communities and employees as we transition away from the fossil fuel economy.
- Provide opportunities for meaningful engagement and equitable participation for impacted communities.

Contact Information

Regina R. Strong, MS, APR

Environmental Justice Public Advocate

Michigan Department of
Environment, Great Lakes, and Energy
strongr1@michigan.gov

517-614-0278