




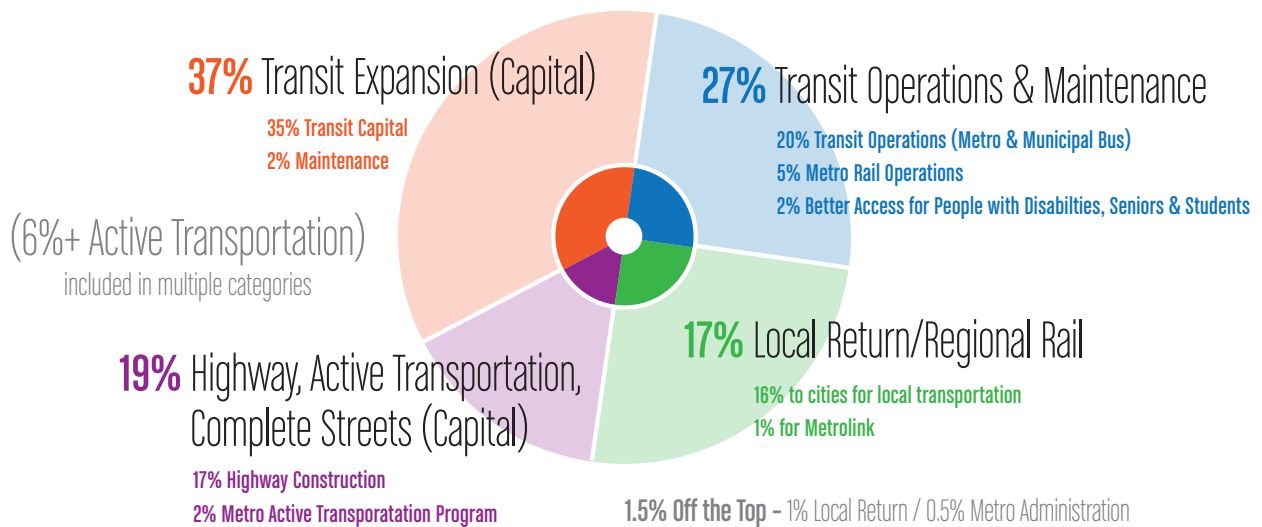


# Vote Yes on **Measure M** on Nov. 8! to Build a World Class Transportation System

## LA COUNTY TRAFFIC IMPROVEMENT PLAN

### ACHIEVING MULTIPLE OBJECTIVES

-  Reducing traffic congestion, reducing travel time and improving mobility
-  Improving our economy and creating jobs
-  Significantly reducing air pollution and greenhouse gas (GHG) emissions
-  Ensuring greater social equity and reducing environmental injustices
-  Enhancing access to jobs, education, services, amenities and open space in LA County



### 10-Year Comprehensive Assessment

- Changes can only be made every 10 years by a two-thirds vote of the Metro Board
- Metro Board can add projects if they don't delay other projects
- Cannot reduce the percentage of revenues going to transit capital, highway capital, transit operations or local return.
- Net revenue from projects to be spent in the same region on the same type of project
- No revenues can be spent on SR 710 North Gap Closure project

### Enhanced Oversight

- Independent Taxpayer Oversight Committee of Metro
- 7 members with specified areas of expertise
- Annual financial & performance audit posted on the internet
- Serve for 5 years, subject to Metro's conflict of interest policies
- Funding can not be taken by Sacramento

Paid for by Campaign to Move LA, in Support of Transportation Ballot Measure M, Major Funding by Aaron Sosnick, HDR Engineering, Inc. & Jacobs Engineering Group, Inc. Produced and printed in-house.

# Vote Yes on Measure M on Nov. 8!

## LA COUNTY TRAFFIC IMPROVEMENT PLAN

### Expenditure Plan (Project List)

## Transit Expansion

### A Rail

- Complete the Metro connection to LAX Automated People Mover\*
- Build the East San Fernando Valley light rail on Van Nuys Boulevard
- Extend the Foothill Gold Line from Azusa to Claremont
- Build both alternatives on Eastside Gold Line extension to South El Monte & Whittier\*
- Extend the Green Line to Torrance
- Build the West Santa Ana Corridor/Eco Rapid Transit from Artesia to Downtown LA
- Build the Sepulveda Pass Corridor from Orange Line to Expo Line and LAX
- Extend the Crenshaw Line to the Wilshire Subway, West Hollywood and Hollywood\*
- Extend the Green Line to Norwalk Metrolink Station\*
- Convert Orange Line Bus Rapid Transit to light rail

### B Bus Rapid Transit

- Upgrades and Improvements to Orange Line
- Build Bus Rapid Transit on Vermont Avenue from Red Line to the Green Line
- Build Bus Rapid Transit from the San Fernando Valley to San Gabriel Valley
- Build Bus Rapid Transit on Lincoln Boulevard from LAX to Santa Monica
- Other projects possible

### C Subway & Streetcar

- Extend Wilshire Subway (Purple Line) from Century City to Westwood and to VA Hospital
- Build the Historic Downtown LA Streetcar & circulator projects\*

## Highway

### A Highway Improvements

- 5 North from 14 to Lake Hughes Rd & 5 South from 605 to 710
- 71 Gap from 10 to Rio Rancho Rd
- 405 South Bay Curve
- South Bay Highway Operational Improvements
- North County arterials

### B Interchange Improvements

- 605: at 60, at 10, and other hot spots
- 110 at 405
- SR 60/SR 57

### C Express Lane Improvements

- 105 from 405 to 605\*
- Sepulveda Pass express lane

### D Other Highway & Goods Movement

- 710 South Corridor Project (NO funding for SR 710 North)
- High Desert Multi-Purpose Corridor right of way\*
- Goods movement projects

## Active Transportation (in transit & highway subfunds)

- Metro Active Transportation and 1st/last mile program connections to transit (active transportation: bicycle & pedestrian)\*
- Active transportation programs in San Gabriel Valley, North County, Central City, South Bay, Westside, Arroyo Verdugo & Las Virgenes Malibu
- LA River Bike Path
- San Fernando City Bike Master Plan
- LA Safe Routes to School

## \*System Connectivity (in transit & highway subfunds)

- To modernize highway and transit that serves airports, seaports and central rail stations.
- Includes Metro Active Transportation & 1st/last mile to transit program; countywide bus rapid transit; seed funding for visionary projects, street car & circulator projects
- 4% of total (half from transit capital and half from highway capital)

Paid for by Campaign to Move LA, in Support of Transportation Ballot Measure M, Major Funding by Aaron Sosnick, HDR Engineering, Inc. & Jacobs Engineering Group, Inc. Produced and printed in-house.

