



**MEMBER OF  
COUNTY  
COMMITTEE**

This is a member of  
County Committee

**COMMITTEE**

**COMMITTEE**

**COMMITTEE**



**MEMBER OF  
COUNTY  
COMMITTEE**



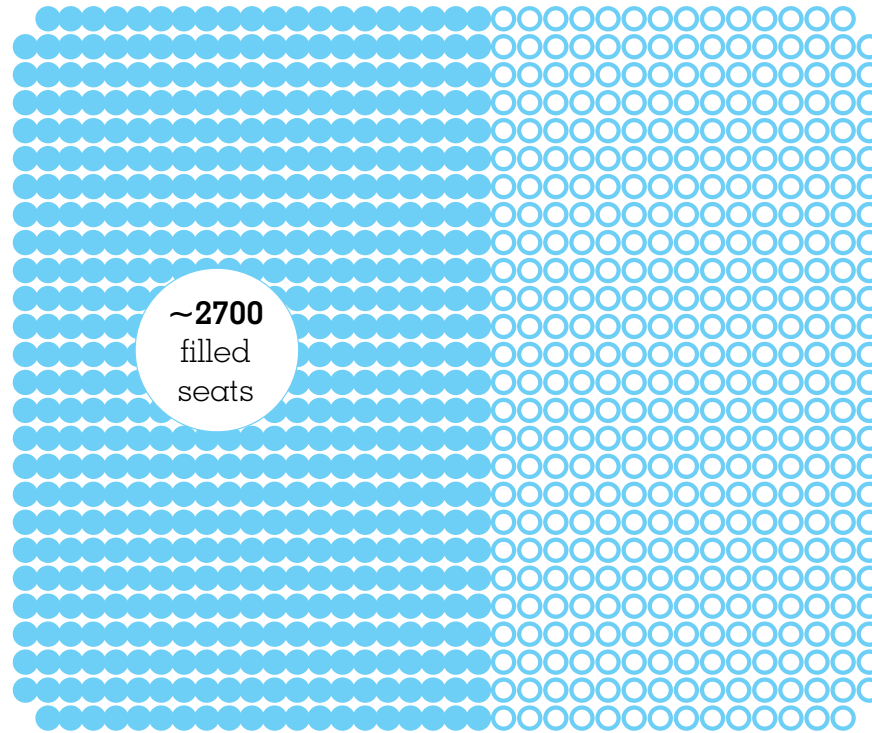
**MEMBER OF  
COUNTY  
COMMITTEE**



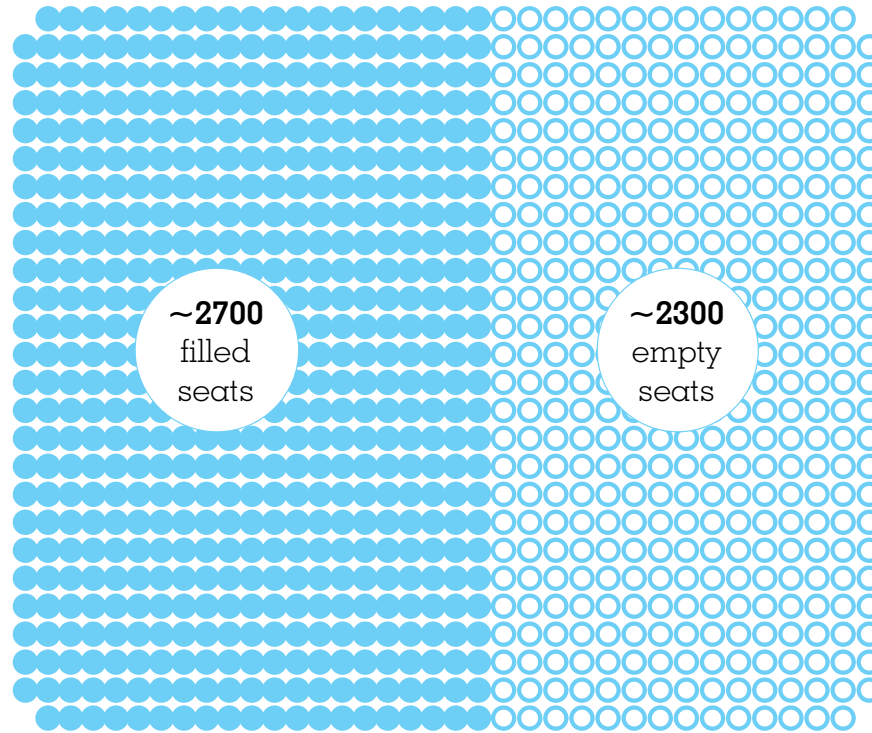
**MEMBER OF  
COUNTY  
COMMITTEE**



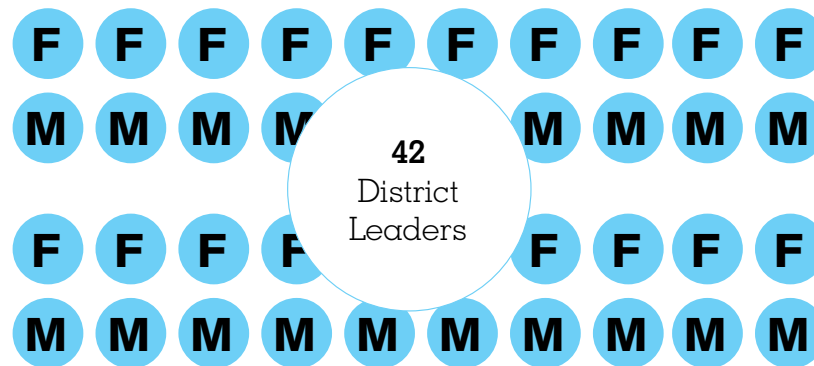
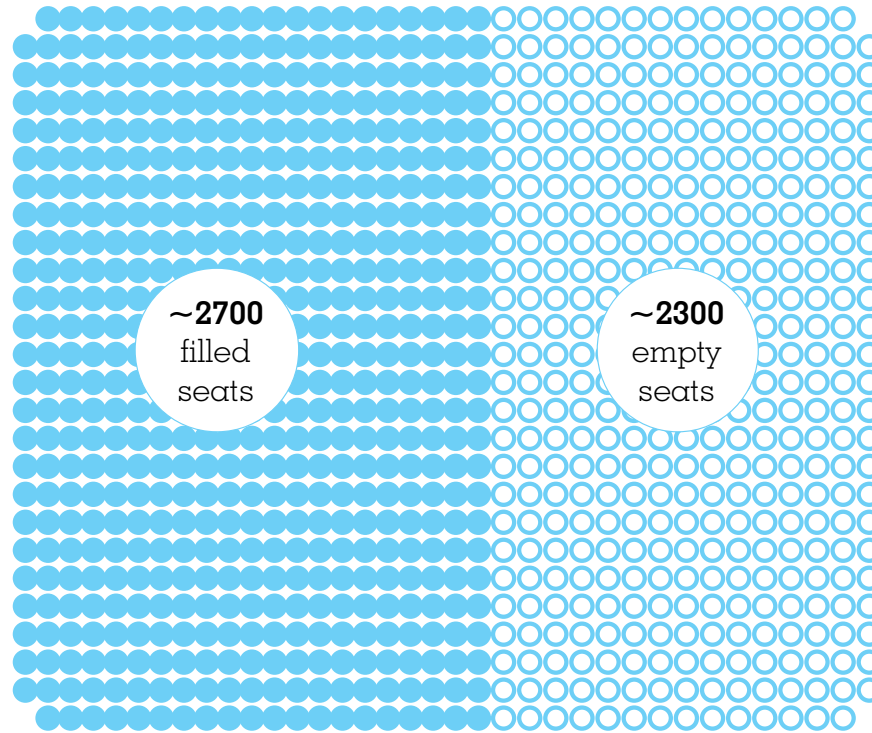
Rep Your Block  
recruited over 500  
members of county  
committee this year.



There are 2700 seats filled, out of about 5000.

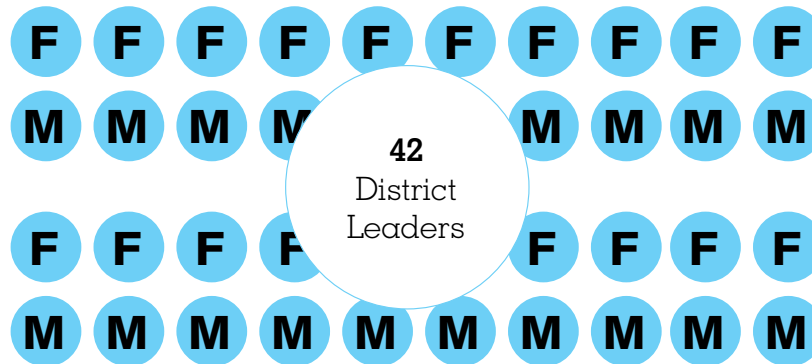
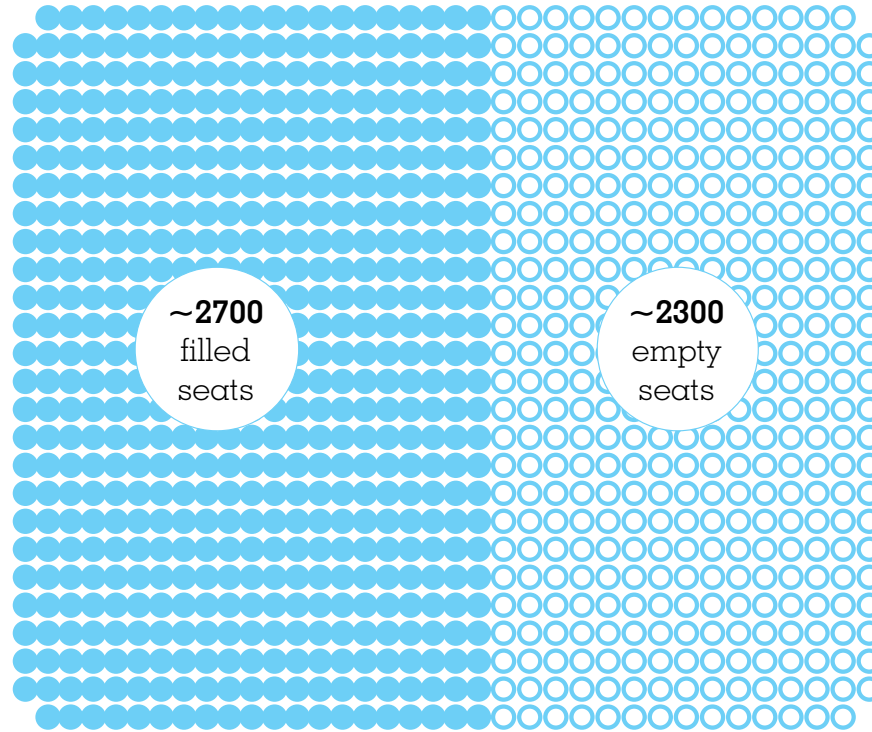


There are 2300 seats unfilled.

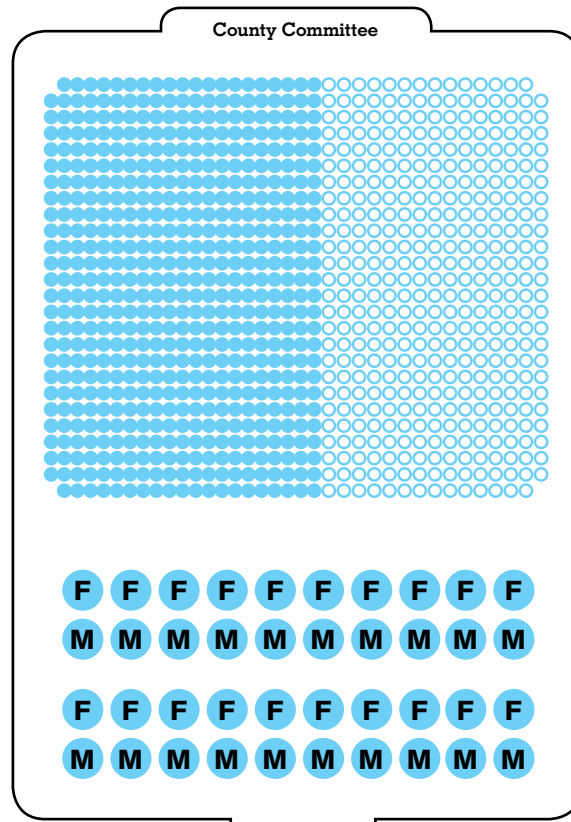


There are also 42 District Leaders, two from each assembly district

# County Committee



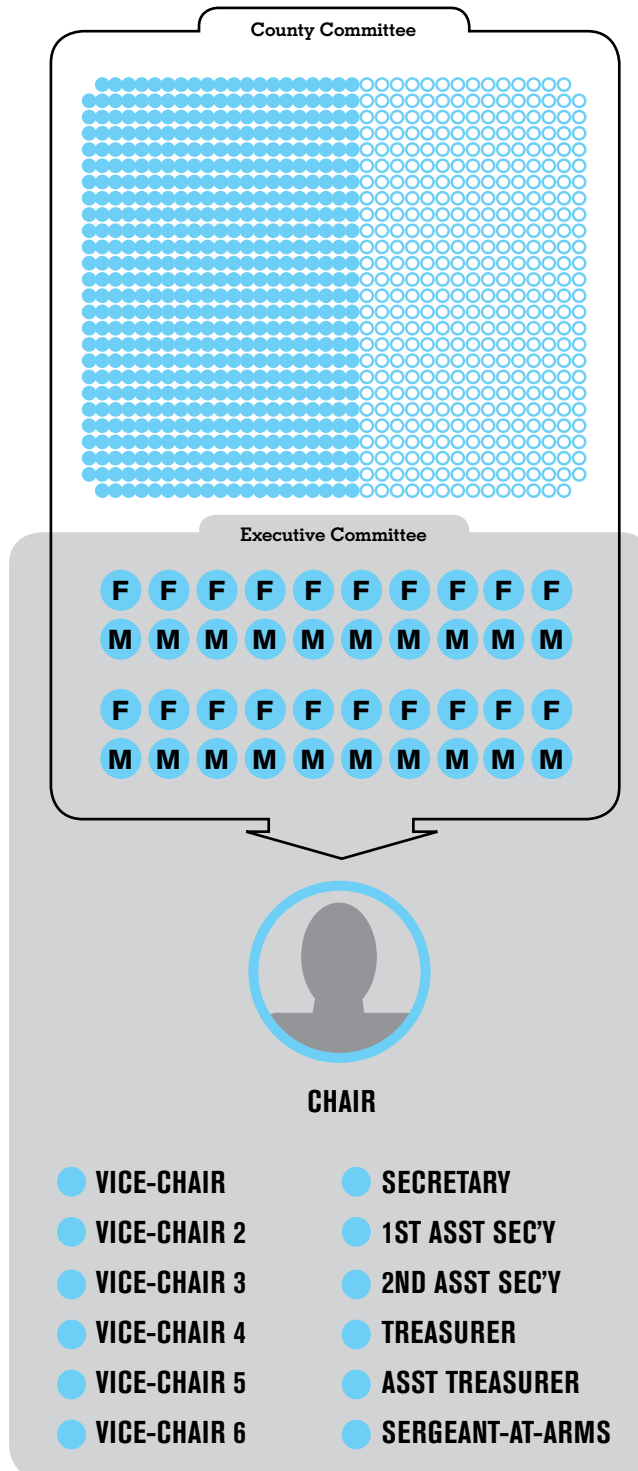
All these people together form the County Committee



**CHAIR**

- **VICE-CHAIR**
- **VICE-CHAIR 2**
- **VICE-CHAIR 3**
- **VICE-CHAIR 4**
- **VICE-CHAIR 5**
- **VICE-CHAIR 6**
- **SECRETARY**
- **1ST ASST SEC'Y**
- **2ND ASST SEC'Y**
- **TREASURER**
- **ASST TREASURER**
- **SERGEANT-AT-ARMS**

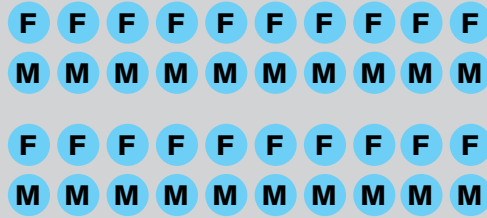
County Committee  
elects a slate of  
leadership of the  
County Committee



The leadership of the County Committee and the District Leaders form the Executive Committee of the County Committee



Executive Committee

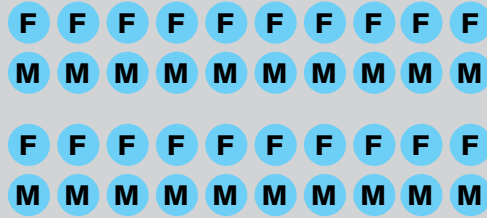


**CHAIR**

- **VICE-CHAIR**
- **VICE-CHAIR 2**
- **VICE-CHAIR 3**
- **VICE-CHAIR 4**
- **VICE-CHAIR 5**
- **VICE-CHAIR 6**
- **SECRETARY**
- **1ST ASST SEC'Y**
- **2ND ASST SEC'Y**
- **TREASURER**
- **ASST TREASURER**
- **SERGEANT-AT-ARMS**

The Executive Committee elects their own leadership.

Executive Committee



**CHAIR**

- VICE-CHAIR
- VICE-CHAIR 2
- VICE-CHAIR 3
- VICE-CHAIR 4
- VICE-CHAIR 5
- VICE-CHAIR 6
- SECRETARY
- 1ST ASST SEC'Y
- 2ND ASST SEC'Y
- TREASURER
- ASST TREASURER
- SERGEANT-AT-ARMS



Frank Seddio

**EXECUTIVE COMMITTEE CHAIR**

- EXECUTIVE COMMITTEE VICE CHAIR
- EXECUTIVE COMMITTEE SECRETARY

Currently the Executive Committee Chair is Frank Seddio.



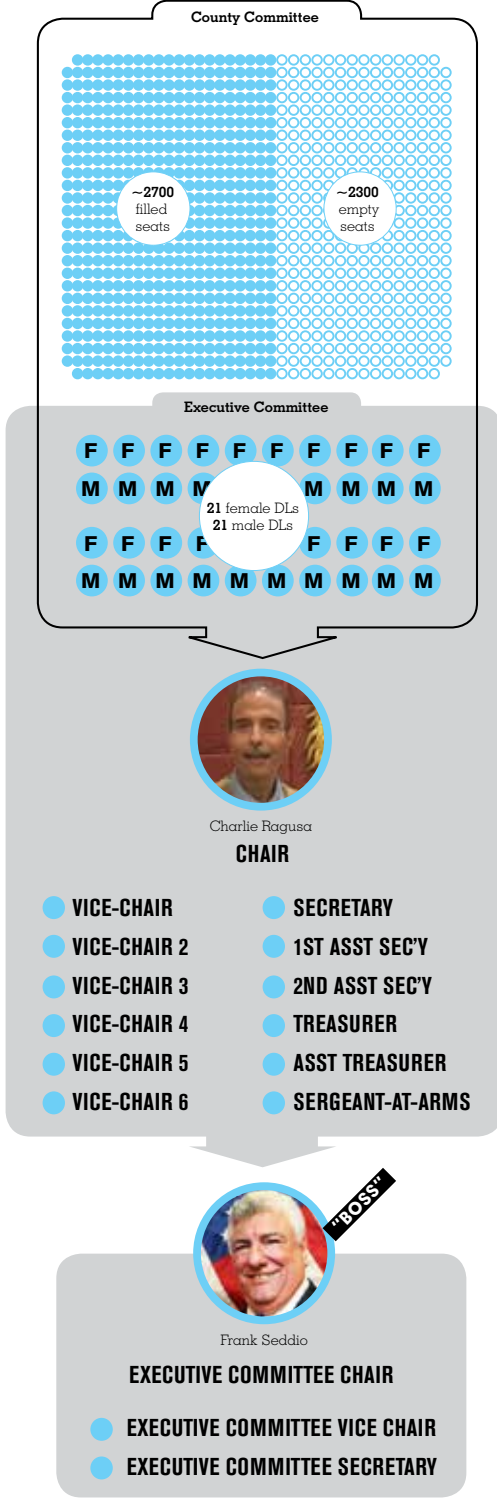
**"BOSS"**

Frank Seddio

**EXECUTIVE COMMITTEE CHAIR**

- **EXECUTIVE COMMITTEE VICE CHAIR**
- **EXECUTIVE COMMITTEE SECRETARY**

Frank Seddio is referred to as the  
County Boss.



This is the Kings County Democratic County Committee.