

# San Diegans

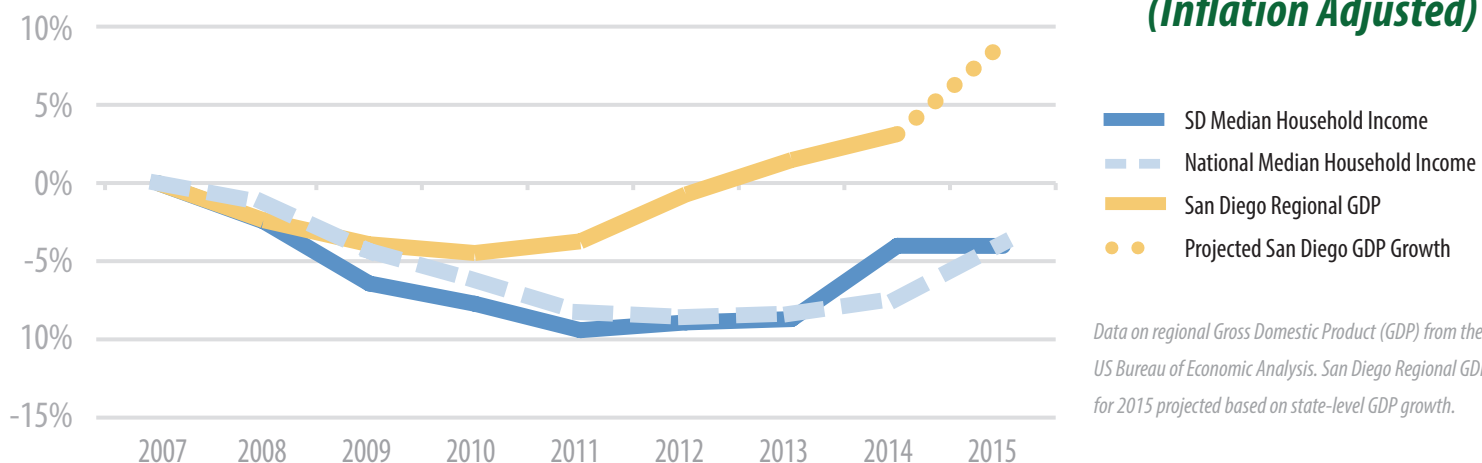
# Left Behind

*Most families still worse off than before the recession*

## KEY FINDINGS:

- ▶ **Flat Household Income:** Despite local improvements in the prior year, and much hailed increases in household median income at the national level, San Diego households' median incomes were stuck at \$67,871 for 2015.
- ▶ **Persistent Poverty:** For the third year in a row, 15.6% of all City of San Diego residents (212,994) lived below the federal poverty threshold. Poverty rates remain higher than the pre-recession rate of 12.1% in 2007.
- ▶ **Children in Poverty:** Nearly one in every five children (19.7%) in San Diego were living below the federal poverty line. This translates to 55,482 children in 2015, over 10,000 more than in pre-recession 2007.

## Change in Median Household Income and Regional Gross Domestic Product, 2007-2015 (Inflation Adjusted)



Nationally, median household incomes grew significantly in 2015. While household income in the City of San Diego grew in the prior year, the 2015 data shows local household incomes were unchanged at \$67,871. Both national and San Diego median household incomes are still approximately 4% below the pre-recession levels of 2007. Meanwhile, the value of all goods and products produced in the San Diego region (Regional Gross Domestic Product) exceeded the 2007 level by 3% in 2014. Based on state level GDP growth, we project San Diego GDP was 9% higher in 2015 than the pre-recession level.

# POVERTY BY RACE AND ETHNICITY

Latino or Hispanic



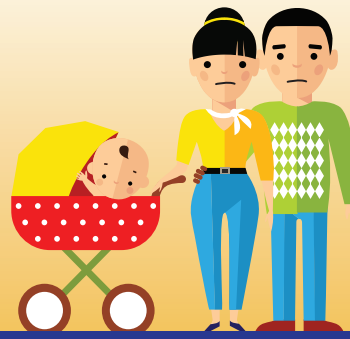
**23.4%**

Black or African-American



**21.8%**

Asian



**11.1%**

White (Non-Hispanic)



**10.8%**

City of San Diego  
Overall Poverty Rate **15.6%**

## 2015 Poverty Level

One person = **\$12,082/yr**

Family of 4 = **\$24,036/yr**

## Economic Hardship\*

One person = **\$24,164/yr**

Family of 4 = **\$48,072/yr**

\*(Below 200% of the federal poverty level)

Especially in high cost areas, the federal poverty level fails to capture the full picture of poverty and minimizes the number of people struggling to make ends meet. The Census Bureau provides data on household incomes below 200 percent of the federal poverty level. This measure better reflects the level of economic hardship in San Diego. Almost 1 in 3 San Diegans (31.7%) live below this threshold of economic hardship.

## San Diego: Poverty & Economic Hardship



*San Diego households living below the federal poverty line would be struggling even if they lived in the poorest areas of the US, like Mississippi or Alabama.*



**2007**

*Pre-recession*

**2015**

City Residents  
in Poverty

	2007 Pre-recession	2015
City Residents in Poverty	148,170 12.1%	212,994 15.6%
City Residents in Economic Hardship*	352,362 28.8%	432,203 31.7%

City Residents in  
Economic Hardship\*

\*Below 200% of the federal poverty level

Black and Latino children are 3 times as likely to live in poverty as White children. Approximately a third of Black children (33.9%) and Latino children (31.2%) live in poverty, compared to 8% of White children and 6.7% of Asian children.

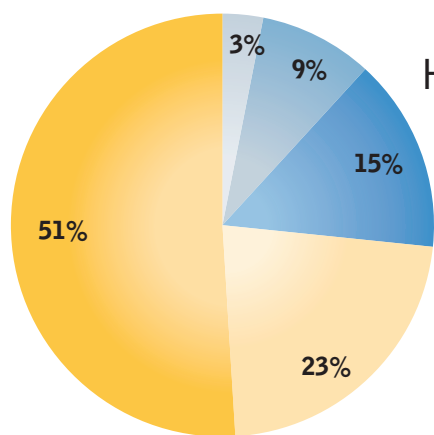
## San Diego: Children, Poverty & Economic Hardship



	2007 <small>Pre-recession</small>		2015	
	Number	% of total	Number	% of total
Children in Poverty	45,410	15.9%	55,482	19.7%
Children in Economic Hardship*	100,897	36.8%	105,446	38.2%

\*Below 200% of the federal poverty level. This includes only children living in households headed by their parents.

**Nearly 40%** of all children live in economic hardship



Highest Income 20% of Households = 51%

Second Highest 20% = 23%

Middle 20% = 15%

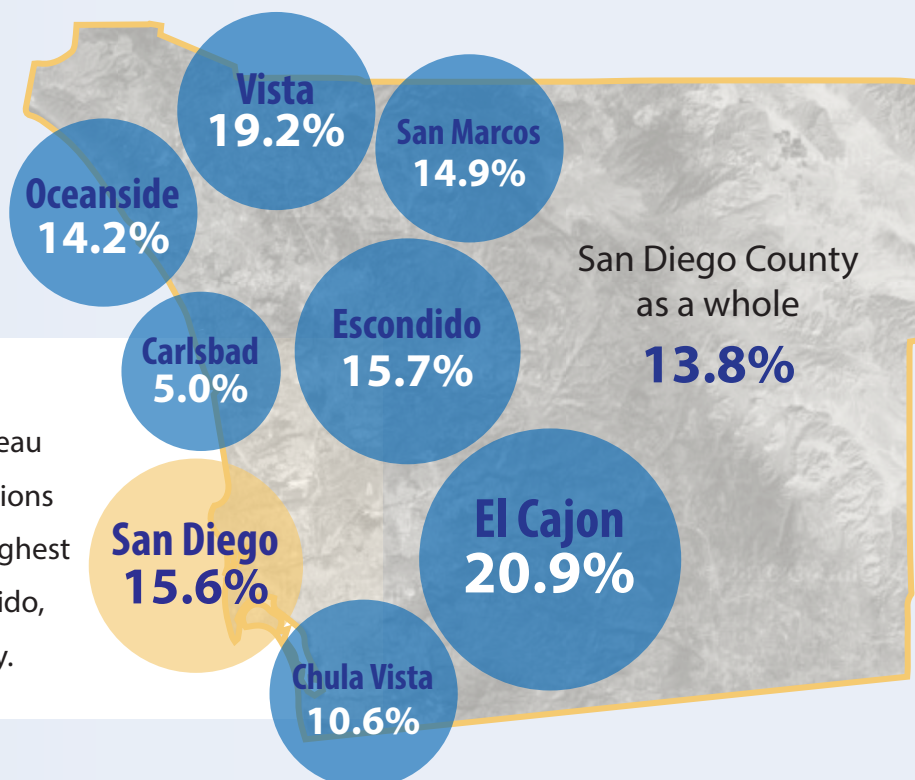
Second Lowest 20% = 9%

Bottom 20% = 3%

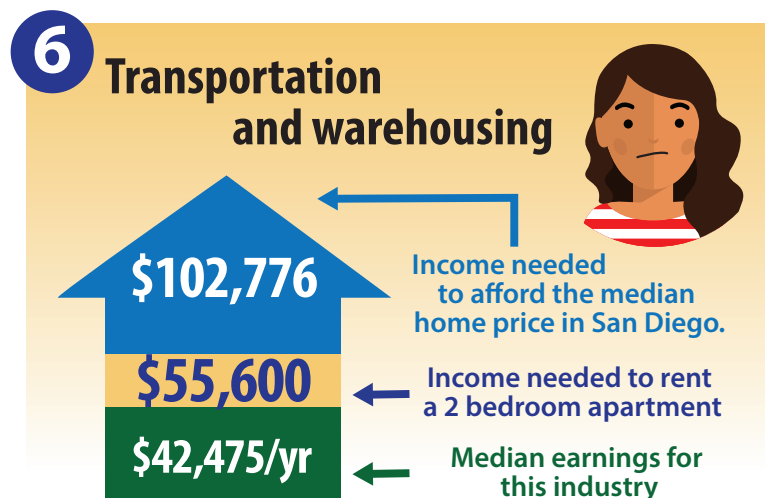
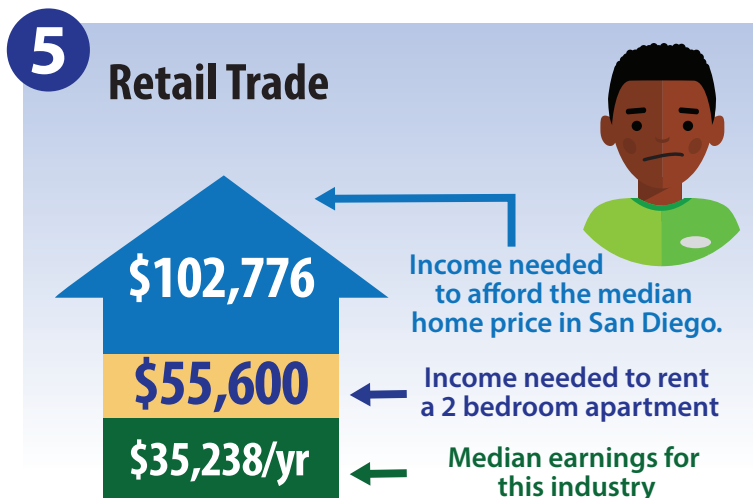
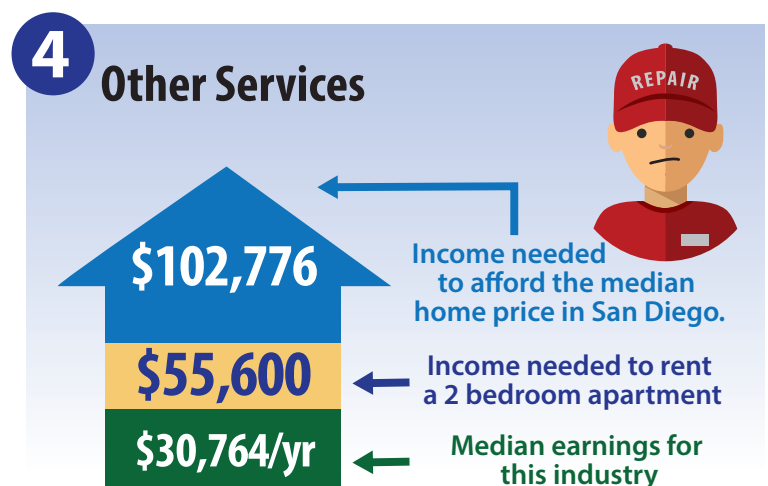
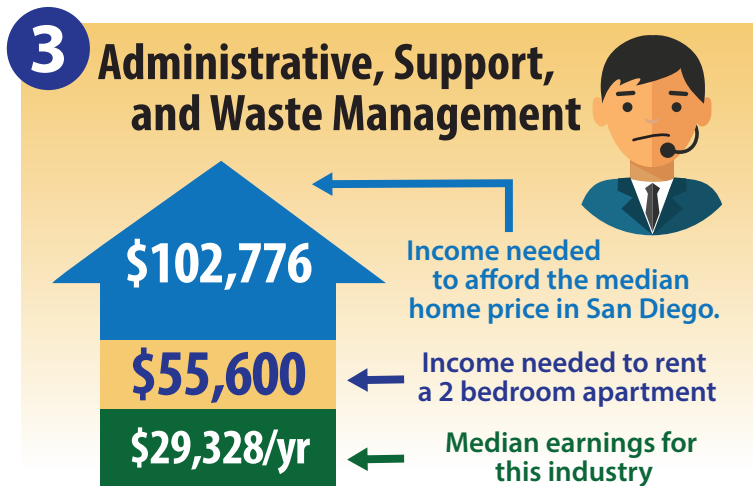
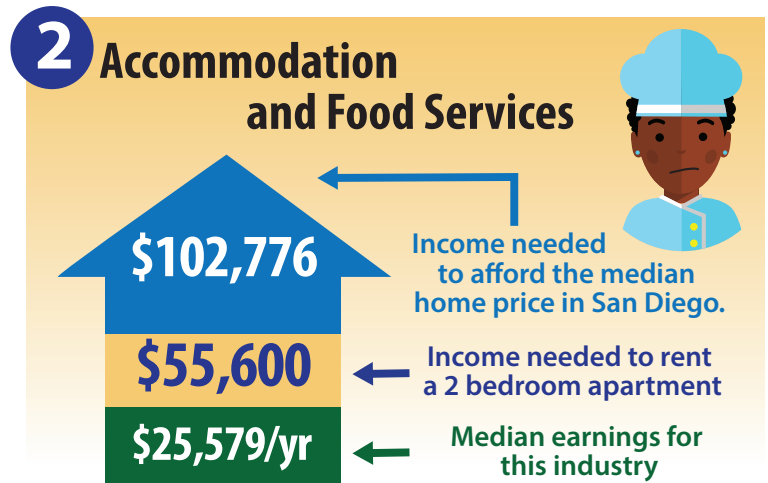
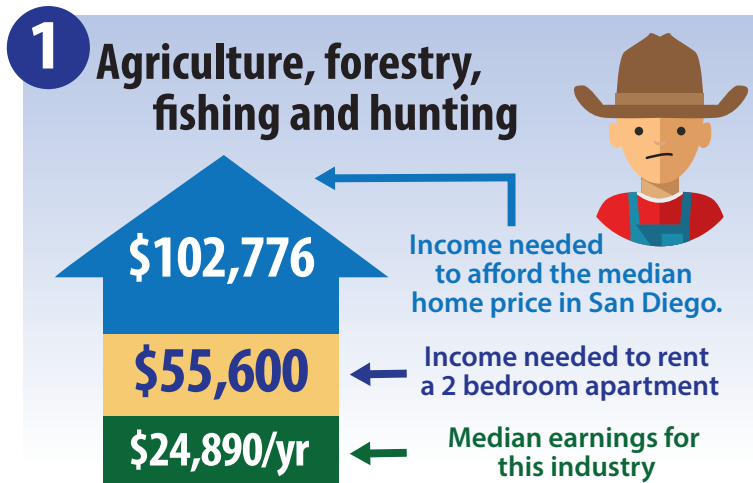
Deep inequality persists in San Diego. **More than half** of all income in the city went to the top 20% of the City's households, while the bottom fifth of households received **only 3% of the income**. The very top 5% of households received **21.6% of all income**.

## Poverty Rates in the Cities of San Diego County

The overall poverty rate for the County of San Diego in 2015 was 13.8%. The Census Bureau reports poverty data for all cities with populations larger than 65,000. The three cities with the highest poverty rates were El Cajon, Vista, and Escondido, all located in inland areas of San Diego County.



# CAN YOU MAKE IT IN SAN DIEGO?



**6 lowest paying industries  
in the City of San Diego**