

A Community Collaboration Project

David Galler and Debbie Wilson
Counties Manukau Health



Menu

Context

Climate Change and Health

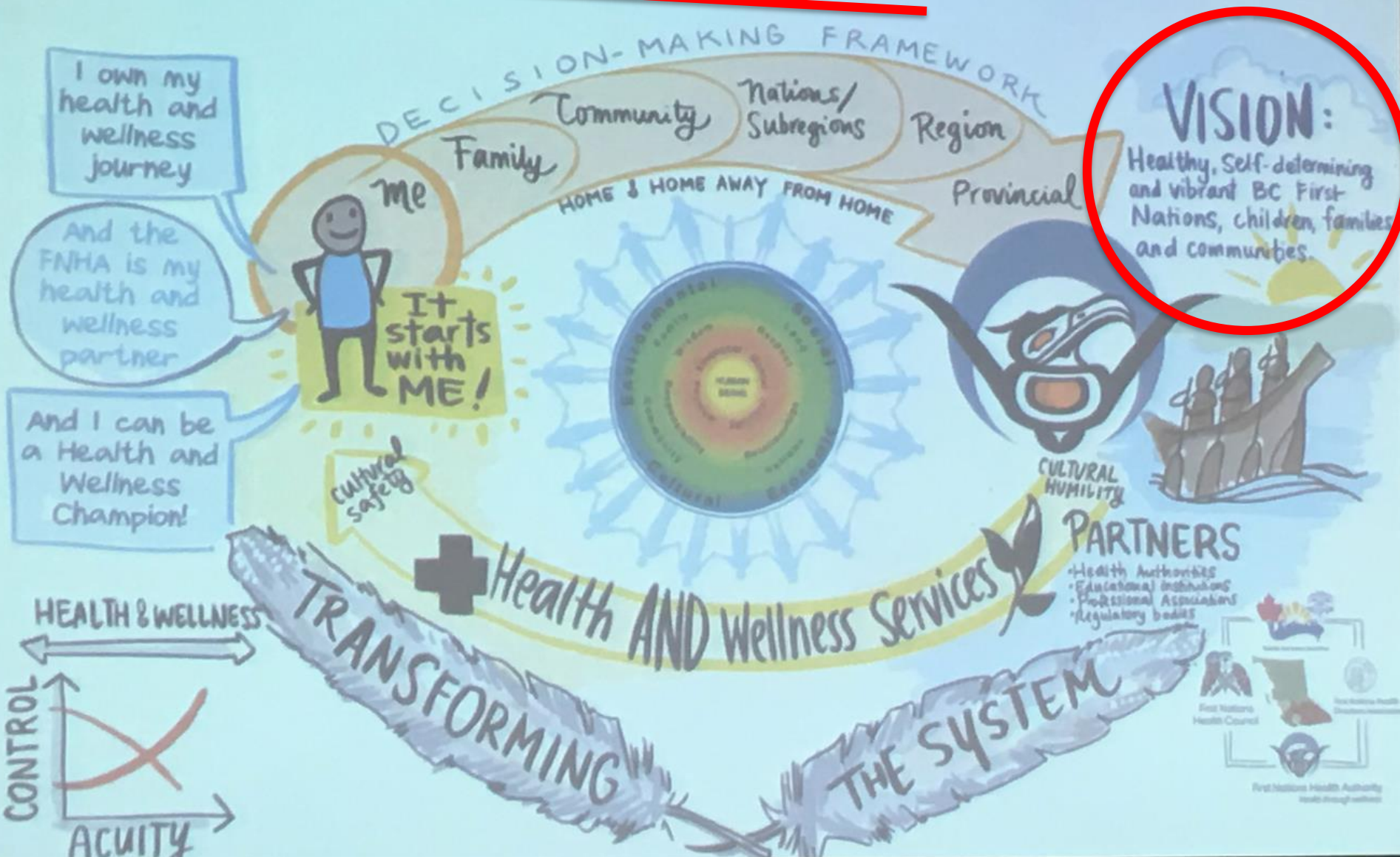
Redefining Value

CM Health: Our story

We need your support

PURPOSE

Ecosystem of Health and Wellness



Individual and Population Health

Functioning ecosystems

Strong social networks

Economic opportunity

An advocacy role for all to influence policy

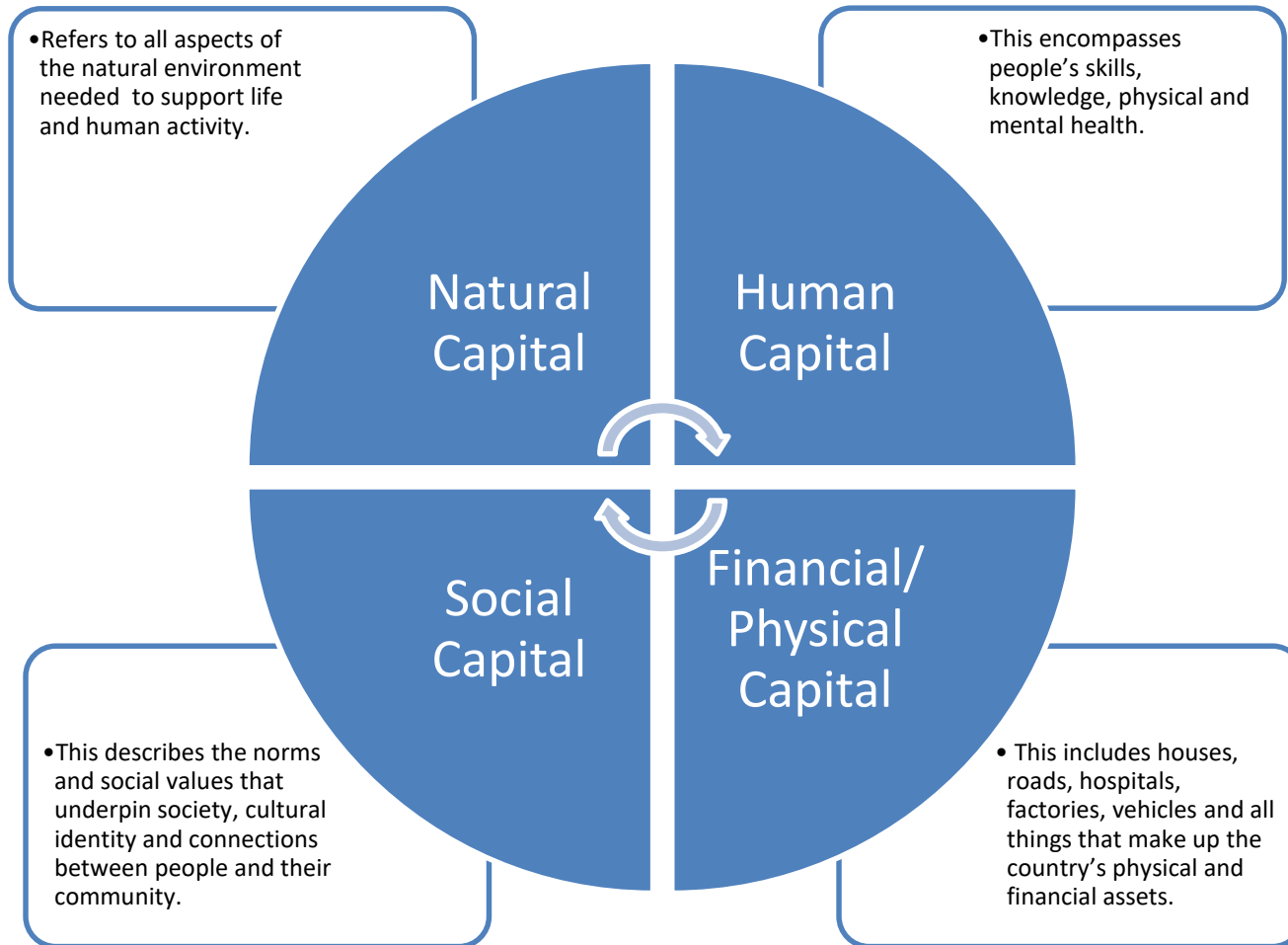
Redefining VALUE

Value = Outcomes/ Costs

- Fiscal
- Environmental
- Population health
- Social

Deliver maximum health gain with minimum financial costs and harmful environmental impacts while adding social value at every opportunity

Budget 2019

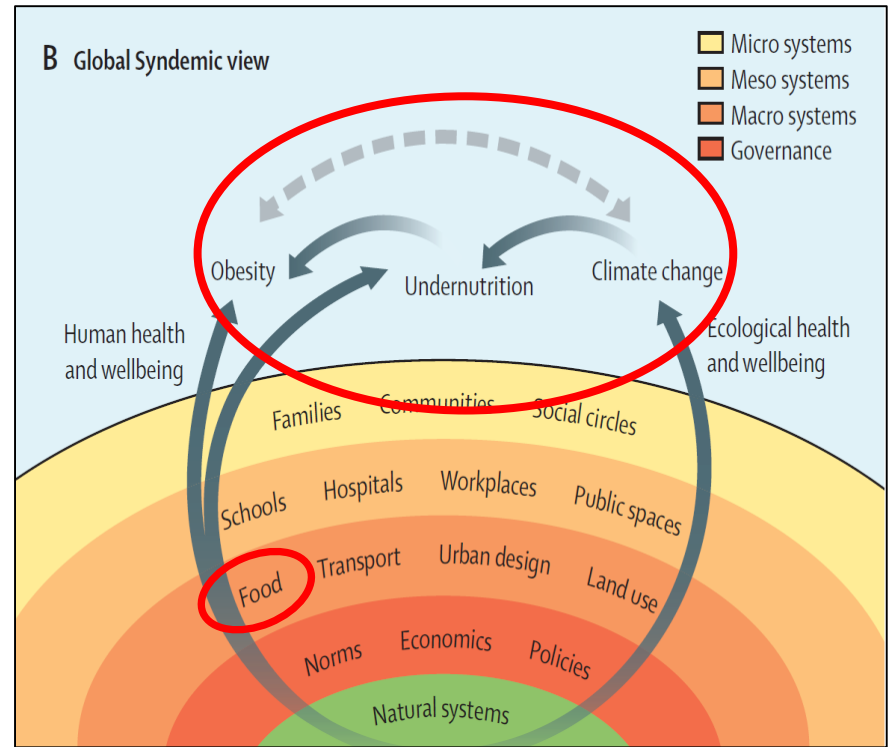
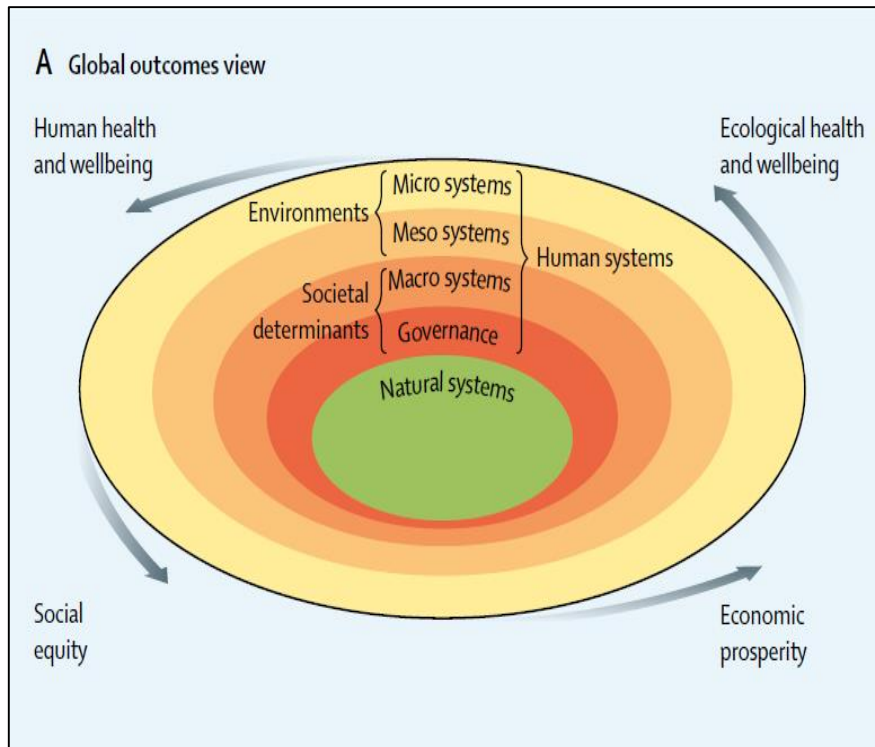


Treasury's Living Standards Framework

The obesity problem redefined

1. Obesity increasing everywhere with no country turning it around
 2. Policy Inertia
 3. Obesity (by itself) has been insufficient to catalyse action
 4. Silos of thinking and action
- Policy Inertia
 - Industry opposition to policy implementation
 - Government reluctance to regulate and tax
 - Civil society ‘apathy’

Systems outcomes framework



New perspectives

Food systems

- Largest cause of ill-health and premature death in every country
- ~25-30% of GHG (50% in NZ) loss of biodiversity etc.
- Major cause of inequities
- Source of wealth for many countries, adds to poverty cycles

Food as complex, adaptive systems

- Driver of The Global Syndemic (obesity, undernutrition, climate change)
- System stability and Policy Inertia (push back on change)

Diets need to change drastically to remain within planetary boundaries

- Double fruits, vegetables, legumes and nuts, halve red meat and added sugar, changes in fish, dairy, whole grains

New Zealand situation

Food systems are a far greater problem for NZ than most countries

- Very high contribution to GHG (~50%) and export income
- 3rd fattest country in the OECD, with huge inequities

Very powerful food lobby

- Contributed to the demise of the Public Health Commission (1997) and the failure to renew the Public Health Bill (2000s)

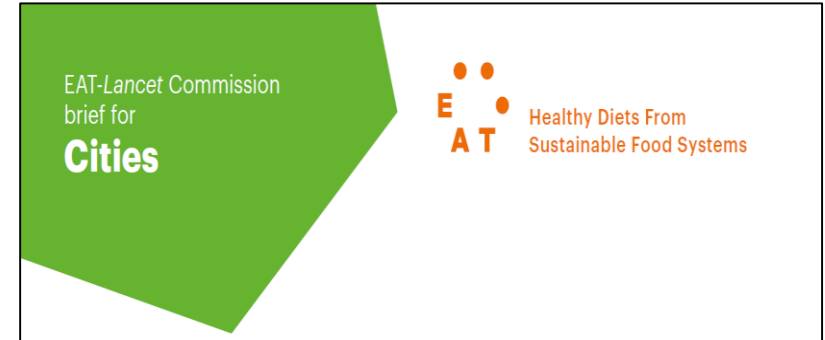
Major advantages

- Small, wealthy, innovative, strong governance systems

Few countries showing leadership on food and climate

Urban food systems

- Municipalities have large untapped potential to contribute to Global Food Transformation
- Can often move faster than national governments
- Healthy & unhealthy food strategies
- Many community food organisations keen to support better food systems
- Global networks of cities



Large Employers in South Auckland

Inspiration

- Wiri Men's Prison

Aspiration

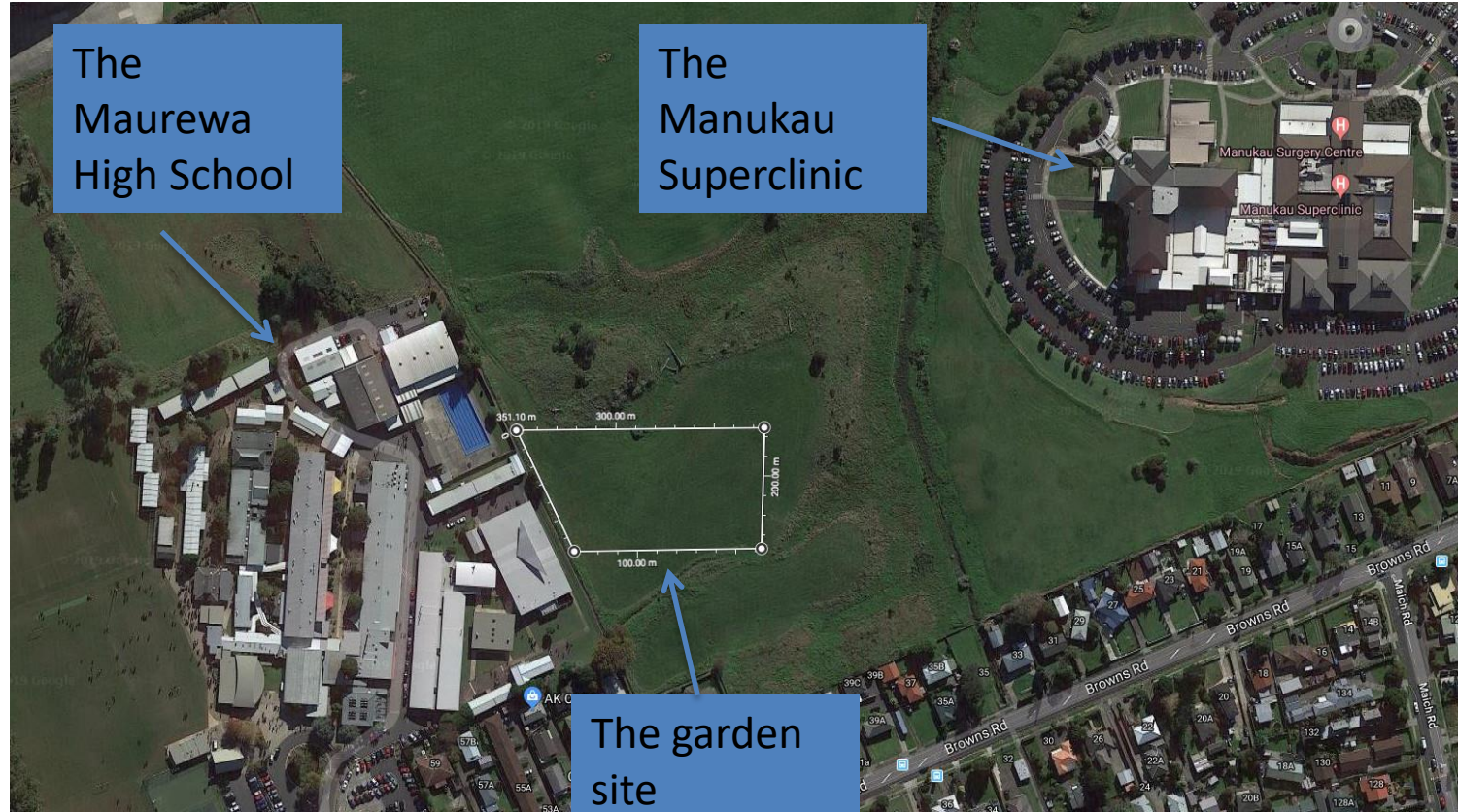
- A composting hub in every neighbourhood
- To collect food waste
- Compost
- Support existing and establish new school and community gardens

Community Collaboration Project

Manurewa High School Education and
Community Garden

Vision To improve the food security and the resilience of the community through the development of an education and community garden

The site

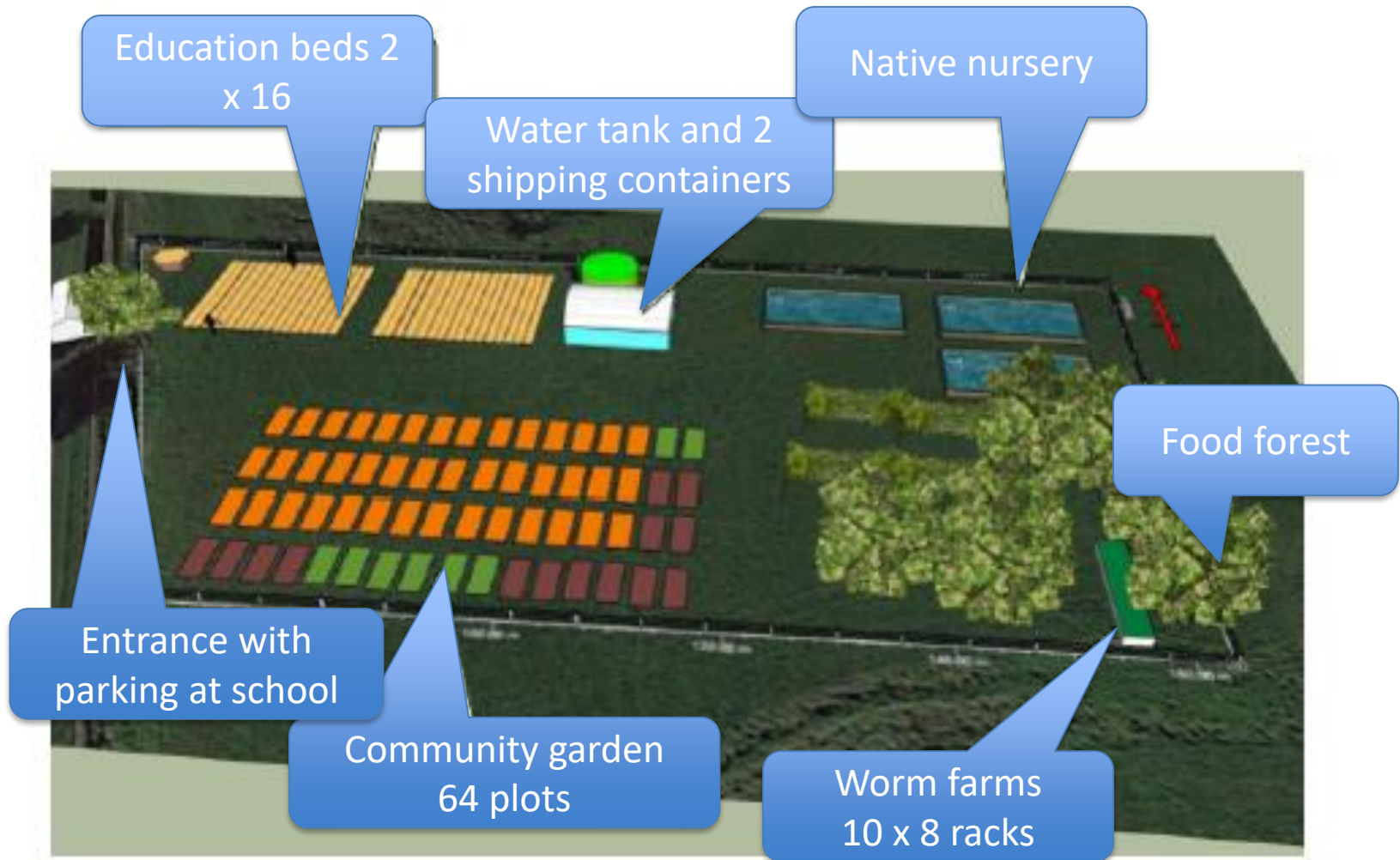


The site

Managed by the school the 0.7 hectares will allow for:

- two education gardens managed by the students
- community garden comprising 64 separate allotments for local families to use
- two roofed containers to store tools, suitable for meetings and classes
- large water tank to collect rainwater from the container roof
- school hospitality facilities will take classes
- cooking worm farm

Initial design



The Education Garden

- The MHS horticulture students will develop and maintain a market garden (NCEA credits)
- grow nourishing food
- demonstrates best practice in urban food growing
- will apply for organic certification at a suitable time

The Community Garden

- provides the wider community with the opportunity to grow their own nutritious food
- fosters a spirit of cooperation and collaboration amongst those growing and their families
- raises the profile of urban farming and encourages self-sufficiency in vegetable production

In addition

There will be sufficient space for

- more growing areas
- a native plant and tree nursery
- a food forest growing trees for vines, fruits, herbs, nuts, perennial vegetables

Summary

- The Global Syndemic is the paramount health challenge of the 21st Century
- We need a Great Intergenerational Food Transformation (GIFT)
- The challenge is **HOW** to get there
- Starts with thinking differently

Summary

- Aspiration - we want things to be different
- Inspiration - we know what's needed
- Perspiration - we will make it work
- We need your – support and commitment

CM Health is well placed to inspire this change