

Pro-equity climate and sustainability action by DHBs

Dr Hayley Bennett* Dr Paula King



&

Sustainable Health Sector National Network NZ (SHSNN)

Why think about DHB
sustainability and equity at the
same time?

Impact of Climate Change on Human Health



FIRST DO NO HARM

Health inequity in Aotearoa-NZ

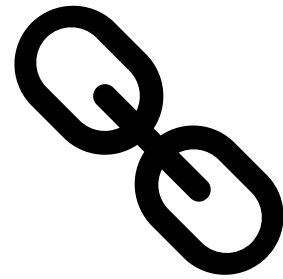
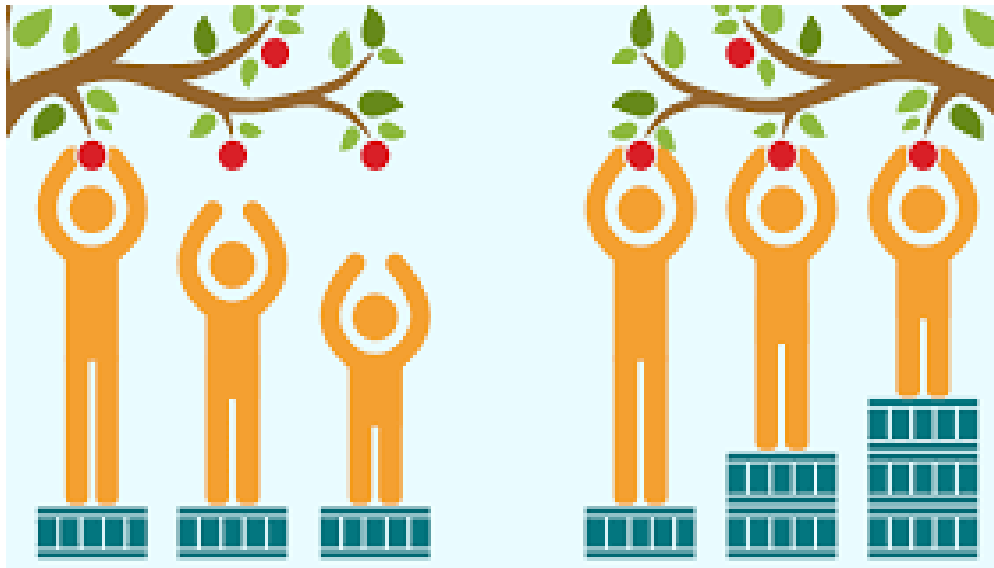
Life expectancy (for those born 2012-14)

- Māori male 7.3 years BELOW non-M male
- Māori female 6.8 years BELOW non-M female

Amenable mortality (2014)

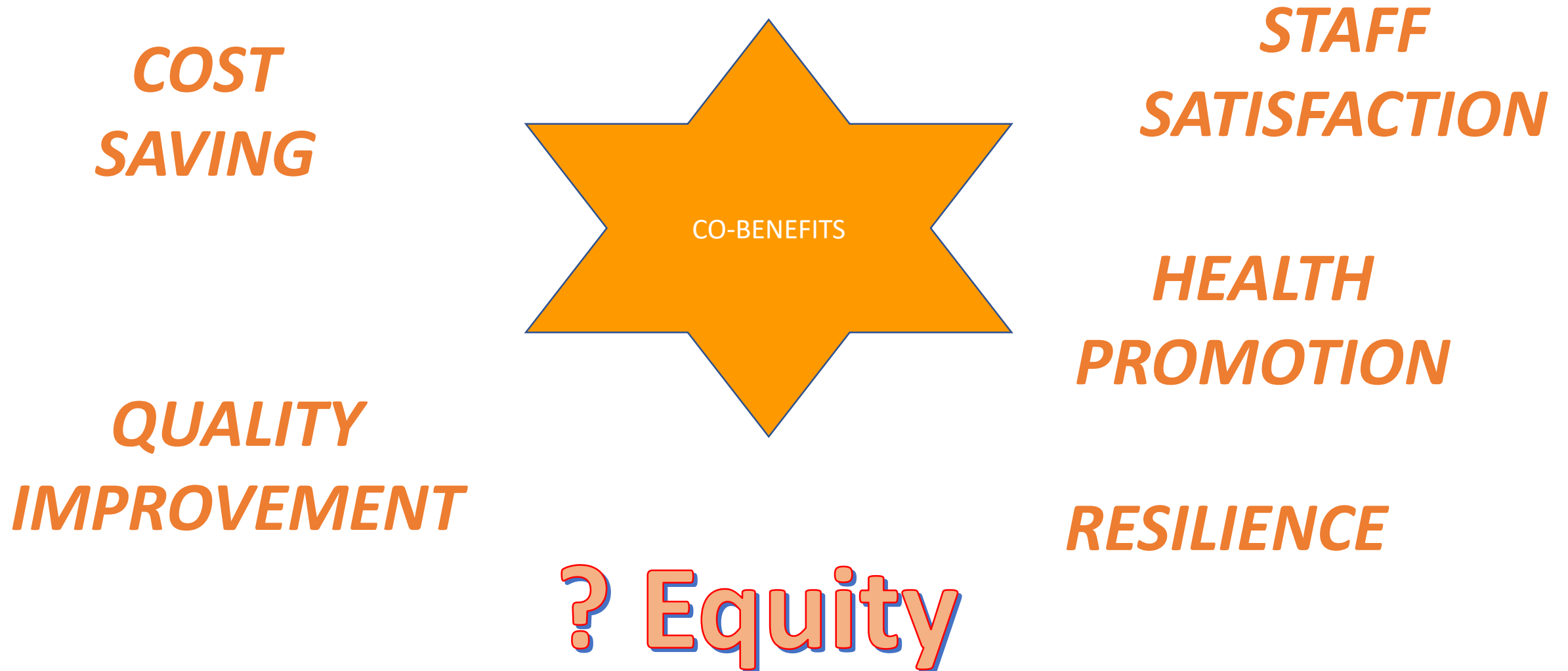
- Māori – 197 per 100,000
- Non-Māori Non Pacific – 76 per 100,000

So 2 big, urgent issues, long neglected



Is it possible to address both at the same time?

Health sector sustainability co-benefits



Literature review

- Very little to find
- NHS England and Kaiser Permanente (KP) link health organisation sustainability to wider “social value”
- KP Environmental Stewardship programme mentions benefits to “minority health” e.g. Procuring local food from small minority owned businesses

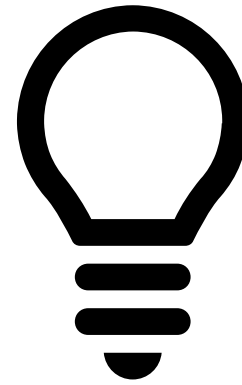
Blue-sky visioning

“Creating ideas that are not limited by current thinking or beliefs”



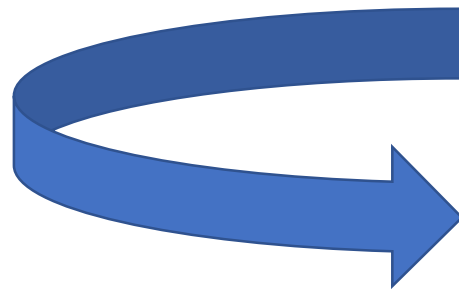
But informed by what environmental sustainability initiatives are already happening in NZ & internationally
Focus on 3 areas: energy use, transport & procurement

Scenario 1: Energy



- DHB sustainable energy plan
- Energy savings re-invested into community housing
- Warm, energy efficient homes, Māori and Pacific community
- Collaboration with local Council, Iwi, Whānau Ora providers

Pre- and post-intervention
monitoring of ASH

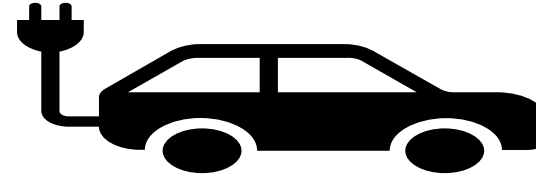


Ideal outcome = reduced ASH in intervention area

FURTHER COST SAVINGS

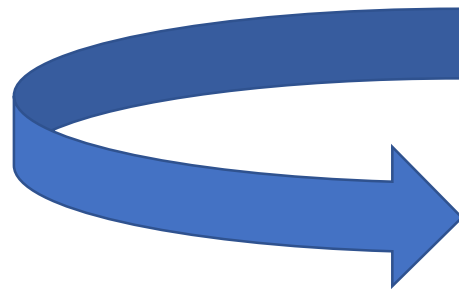


Scenario 2: Travel



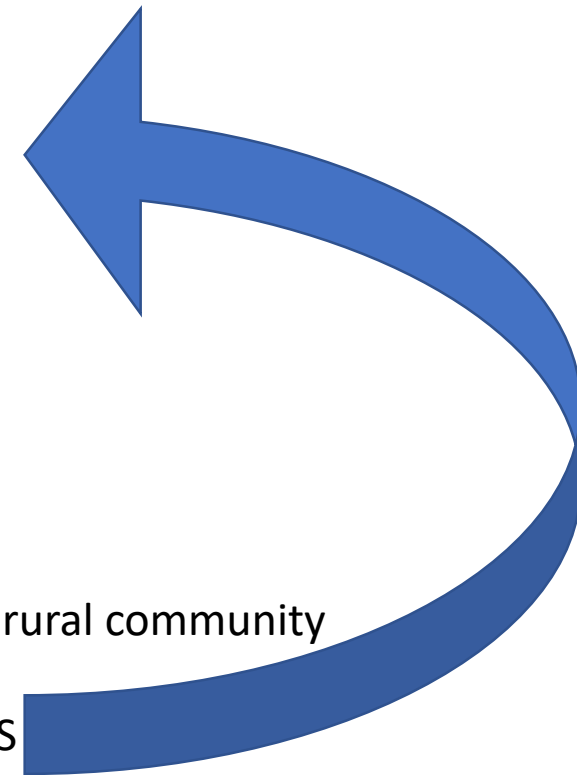
- DHB sustainable travel plan
- Fuel and car maintenance cost savings
- Invested in outreach service for rural, Māori community
- Partnership with local Māori health provider

Pre- and post-intervention
monitoring of ASH

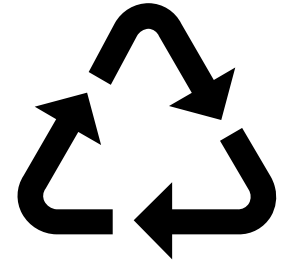


Ideal outcome = reduced ASH rate in rural community

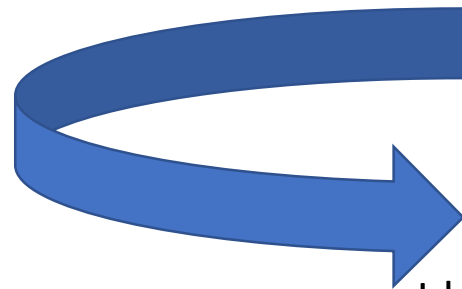
FURTHER COST SAVINGS



Scenario 3: Procurement/supply chain



- DHB sustainable food plan
- 80% fresh food purchased in local region
- Food waste collected & composted
- Marae food garden
- Purchase produce from food garden



Ideal outcomes = food security, indigenous food sovereignty, boost local livelihoods/income + reduce food miles

Other ideas

- Solar farm by church in Flaxmere to reduce fuel poverty



solar plan to reduce energy poverty ...
radionz.co.nz

Reduced poverty
Warmer, drier homes



Healthier

DHB a part-funder, using sustainability savings?

What we think needs to happen...

- National coordination – SDU – frameworks and reporting
- Partnership with Māori, internally and externally
- Sustainability managers in all DHBs, with equity expertise



**Pro-equity climate change
and environmental
sustainability action by
district health boards in
Aotearoa/New Zealand**

Hayley Bennett, Paula King

ABSTRACT

<https://www.nzma.org.nz/journal/read-the-journal/vol-131-no-1481-31-august-2018>


NZ Climate & Health Council

&

Sustainable Health Sector National Network NZ (SHSNN)