



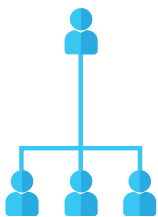
TRANSFORM ALLIES INTO ADVOCATES™

Outreach Experts helps unions harness the power of leading technology to fight - and win - critical battles.

We building digital tools and develop communication strategies that strengthen labor unions organizing capabilities, unify members across wide geographies and drive engagement.

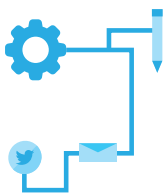


ENGAGING MEMBERS | GENERATING ADVOCACY | WINNING BATTLES



ENGAGING COMMUNITIES

We build customized membership management systems, communication tools, and digital action centers that increase membership engagement.

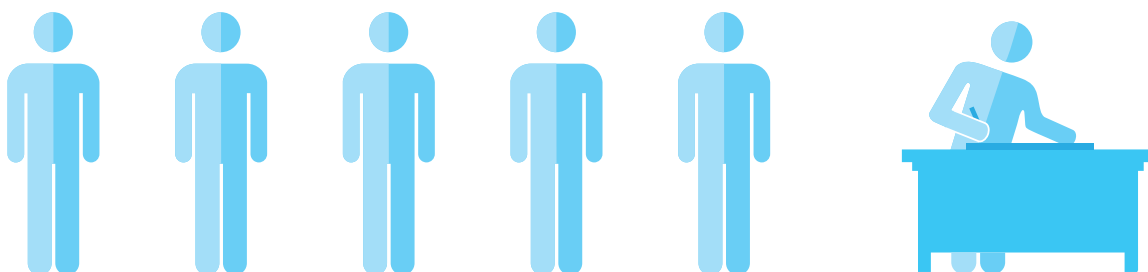


GENERATING ADVOCACY

We create easy pathways for your members to directly contact key decision makers, sign petitions and spread awareness.

WINNING BATTLES

We mobilize thousands of union members and allies to take action and use their voice to win critical battles.





WE ARE FORCE MULTIPLIERS TAKE A LOOK IN OUR TOOLBOX

We pull from a large box of tactics and tools to multiply the force of labor unions. Here's an overview of Outreach Experts' capabilities.

CAPABILITIES



RESEARCH

Utilizing innovative data collection tools to identify natural leaders, gain valuable insights about decision makers and connect with members.

- STAKEHOLDER MAPPING
- DATA COLLECTION
- STAKEHOLDER ID & ANALYSIS
- ONLINE SURVEYS

STRATEGY

Developing comprehensive strategies to activate your members, drive engagement and win crucial battles.

- PUBLIC PARTICIPATION PLANNING
- COMMUNICATIONS
- EXPERIENCE DEVELOPMENT
- PARTNERSHIP DEVELOPMENT



FIELD

Mobilizing your members to take direct actions and empowering advocacy leaders to transform allies into vocal advocates.

- FIELD OUTREACH
- COMMUNITY ENGAGEMENT
- GRASSROOTS ORGANIZING
- DIGITAL ORGANIZING

CREATIVE

Capturing the attention of your members with creative solutions that spark engagement and provoke action.

- BRANDING & DESIGN
- WEBSITE & APP DEVELOPMENT
- STORYTELLING
- COMMUNICATIONS



TOOLS

Integrating leading technology with traditional media to increase participation and influence key decisions.

- CRM
- EMAIL
- MOBILE TOOLS
- VIDEO
- SOCIAL
- TELEPHONE

CONTACT JAY VINCENT
Founder & Chief Engagement Officer

312-523-6893

jay@outreachexperts.com



WE TRANSFORM ALLIES INTO ADVOCATES.™

WWW.OUTREACHEXPERTS.COM