

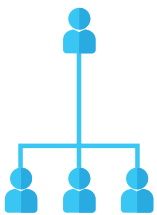


EMPOWER YOUR MEMBERS

Outreach Experts helps associations strengthen their membership by harnessing the power of public participation techniques, stakeholder engagement tactics and leading technology.

We development tailored strategies to increase engagement and create experiences that foster a strong community of practice.

DRIVING ENGAGEMENT | STRENGTHENING COMMUNITIES OF PRACTICE



ENGAGING COMMUNITIES

We build customized membership management systems, communication plans, and utilize social media to increase participation.

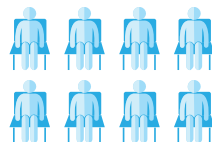


STRENGTHENING COMMUNITIES OF PRACTICE

We develop tailored strategies that drive meeting attendance and help you produce enriching membership experiences.



IDENTIFY SOCIAL ADVOCATES



DRIVE MEETING ATTENDANCE



CREATE MEMBERSHIP EXPERIENCES



TAKE A LOOK IN OUR TOOLBOX

We pull from a large box of tactics and tools to drive engagement for associations.

Here's an overview of Outreach Experts' capabilities.

CAPABILITIES



RESEARCH

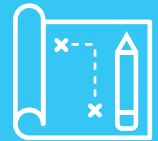
Utilizing innovative data collection tools to identify natural leaders, new opportunities and connect with members across social networks and wide geographies.

- STAKEHOLDER MAPPING
- STAKEHOLDER ID & ANALYSIS
- FIELD & ONLINE SURVEYS
- RISK INVENTORY

STRATEGY

Developing comprehensive strategies to drive engagement and create experiences that enhance your community of practice.

- PUBLIC PARTICIPATION PLANNING
- EXPERIENCE DEVELOPMENT
- COMMUNICATIONS
- PARTNERSHIP DEVELOPMENT



FIELD

Mobilizing your members to get involved and empowering leaders within your association to become ambassadors.

- FIELD OUTREACH
- GRASSROOTS ORGANIZING
- FACILITATION & STAFFING
- DIGITAL ORGANIZING

CREATIVE

Using a wide range of creative solutions to amplify your message and inspire your members.

- BRANDING & DESIGN
- STORYTELLING
- WEBSITE & APP DEVELOPMENT
- COMMUNICATIONS



TOOLS

Integrating traditional media and leading technology to increase participation and strengthen your community of practice.

- CRM
- VIDEO
- EMAIL
- SOCIAL
- MOBILE TOOLS
- TELEPHONE

CONTACT JAY VINCENT
Founder & Chief Engagement Officer

 312-523-6893

 jay@outreachexperts.com



WE TRANSFORM ALLIES INTO ADVOCATES.™

WWW.OUTREACHEXPERTS.COM