



# Partners In Health

ENGAGE

Building the **Right to Health** Movement



**Partners**  
**In Health**

ENGAGE

---

**This year's campaign**

- Maternal and Child Health
- Tuberculosis
- Nutrition
- Campaign Timeline



**Partners  
In Health**

ENGAGE

---

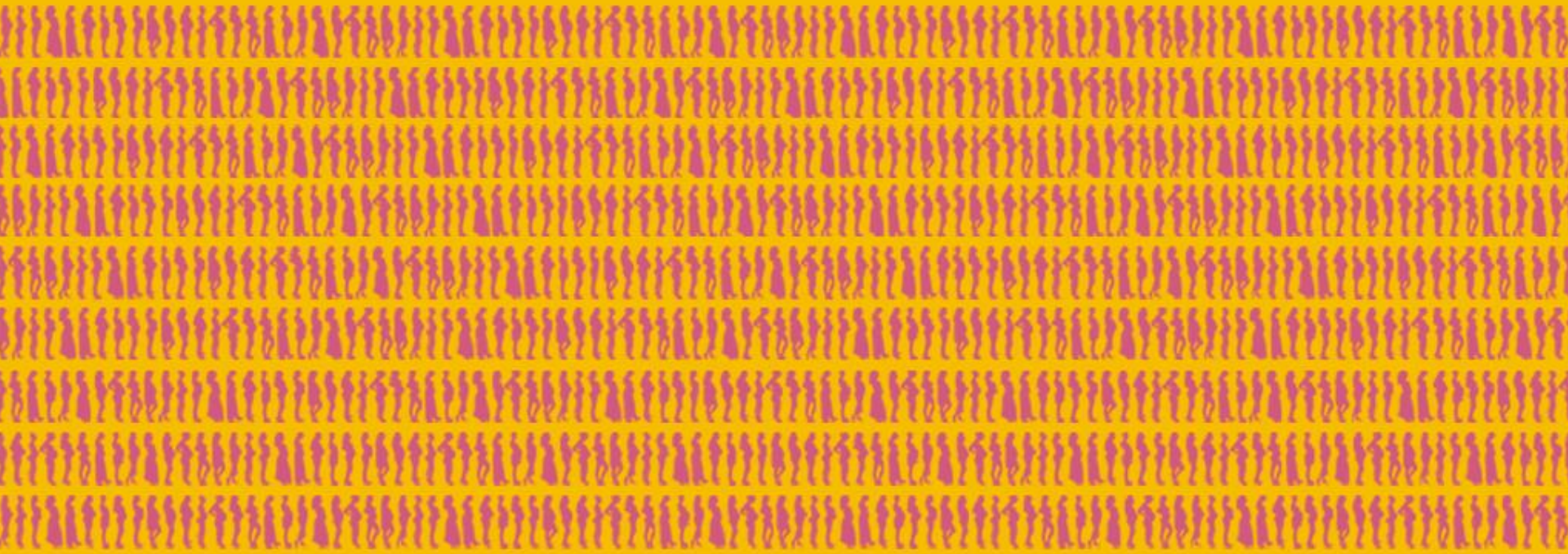
# **Maternal and Child Health: Our big focus for fall**



**Partners**  
**In Health**  
ENGAGE

# The Problem

**Every day, 830 women die in pregnancy or childbirth.**





**Partners**  
**In Health**  
ENGAGE

## **Maternal and Child Survival: Priority for USAID**

---

"We now have the chance to achieve a grand convergence in health – a world where, within a generation, women and children all have the same access to health care and an equal opportunity to survive and thrive, regardless of where they give birth or are born."

*– Dr. Ariel Pablos-Mendez, Child and Maternal Survival Coordinator USAID*



**Partners  
In Health**  
ENGAGE

# USAID: Acting on the Call



- Acting on the Call Report
- Roadmap to end unnecessary deaths of mothers and children by 2035.
- Goal by 2020:
  - 15 million children's lives saved
  - 600,000 Women



**Partners**  
**In Health**  
ENGAGE

# Reach Every Mother and Child Act

---

- **Bicameral**
  - 175 Co-Sponsors in the House
  - 25 Co-Sponsors in the Senate
- **Bipartisan**
  - 111 Democrats in House, 64 Republicans
  - 12 Republicans in Senate, 13 Democrats
- **No new funds needed!**





**Partners**  
**In Health**  
ENGAGE

# Reach Every Mother and Child Act

---

- Make permanent a Maternal and Child Survival Coordinator
- End preventable maternal and child deaths by 2035
- Focus on the poor & vulnerable
- Focus on evidence-based interventions
- Increase accountability
- Streamline existing resources

- 
- Looking to get it up for a vote either this fall or early in 2017.
  - We can:
    - Get more co-sponsors
    - Urge chairs to move the bill this year (2016)

## What will YOU do?

---

- Meet with your members of Congress
- Write LTEs and Op-Eds
- Letter writing and call-in campaigns





**Partners  
In Health**  
ENGAGE

# PIH's Work on Maternal and Child Health

---



*A view of the maternity ward at J.J. Dossen Memorial Hospital in southeast Liberia in 2015. PIH is nearly finished with a six-month remodel of the hospital. – Photo Credit Rebecca E. Rollins*



Partners  
In Health  
ENGAGE

# PIH's Work on Maternal and Child Health

---



*Despite her mother suffering a placental abruption, Lineo Seiso was born safely thanks to staff at Nkau Health Center.  
Photo by Rebecca E. Rollins / Partners In Health*

- **November Personal Fundraising Campaign!**
  - Name Ideas? Let us know on the feedback form from today's work.
- **Team Fundraising:**
  - Get a page link
  - Set up your pages
  - Launch in early November
  - Look out for Webinar



**Partners**  
**In Health**

ENGAGE

---

# **Tuberculosis: Why we can't give up the fight**



**Partners  
In Health**  
ENGAGE

# Tuberculosis: “Ebola with Wings”



*Radiografía normal*





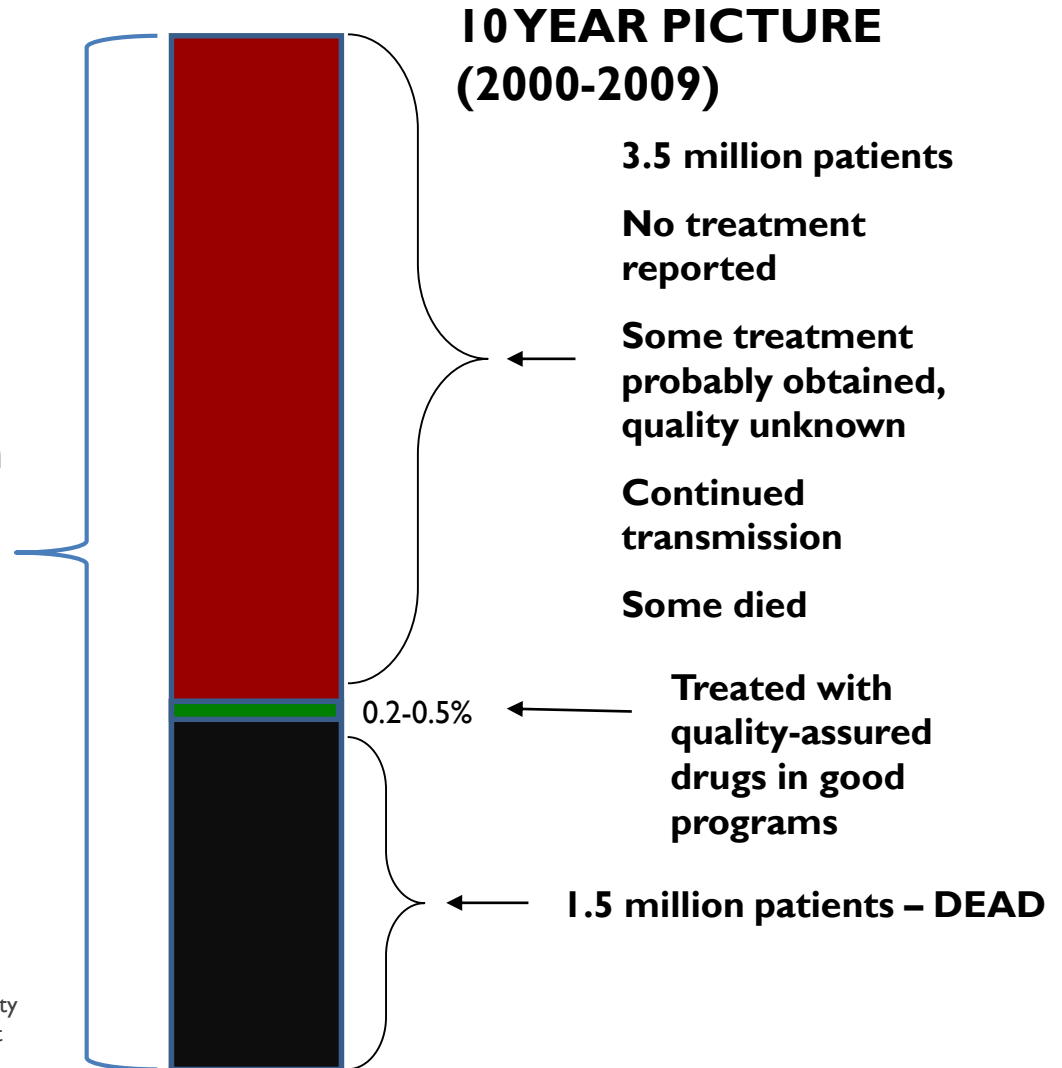


# TB: a hard fight



~5 million cases

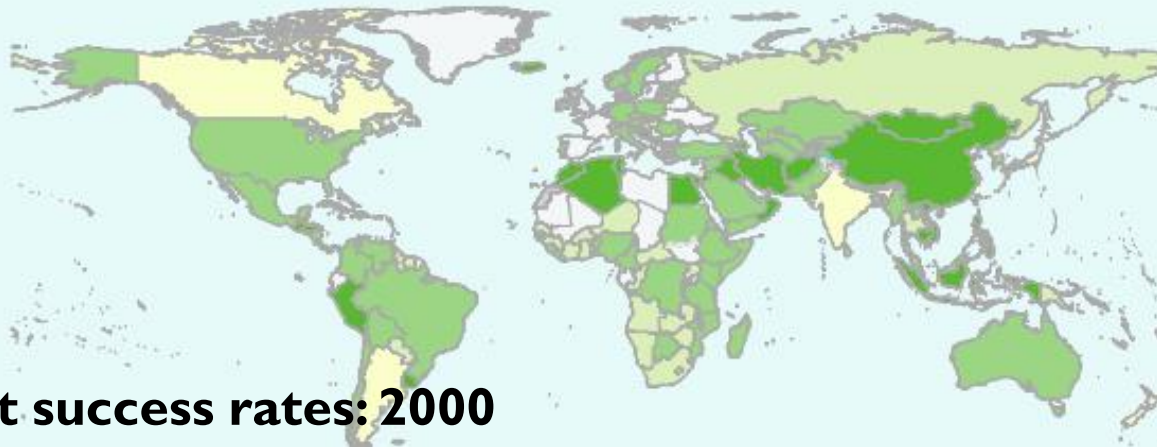
Photo: Open Society  
Institute/Pep Bonet



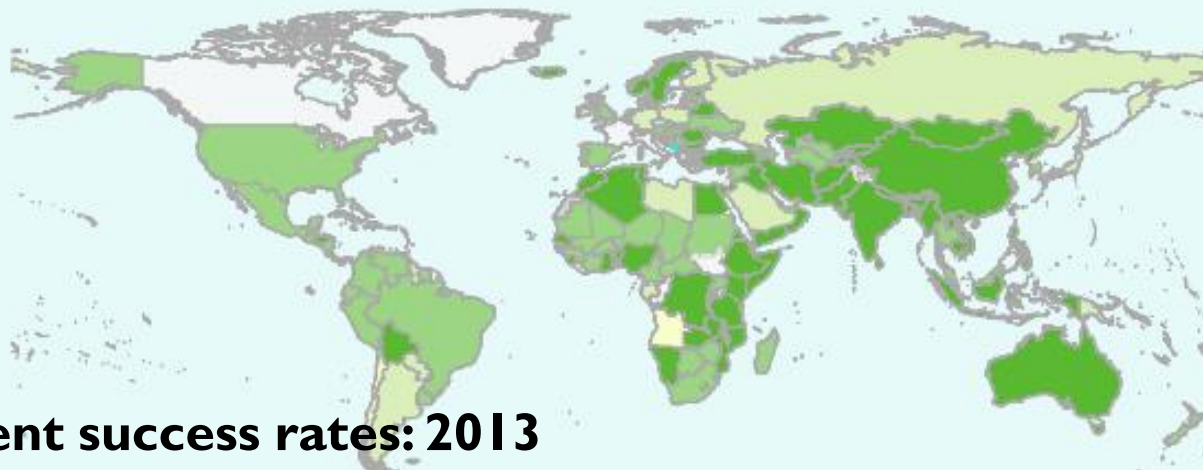


**Partners**  
**In Health**  
ENGAGE

# TB: looking ahead



**TB Treatment success rates: 2000**



**TB Treatment success rates: 2013**

- At least 1/3 of people w/ HIV have latent TB
  - 21-34 Times more likely to develop active TB than persons without HIV
- TB is the leading cause of death among people with HIV



## One in three

people living with HIV who died in 2015 died of tuberculosis (TB).

Source: WHO (2015) 'Tuberculosis Fact Sheet No 104'.



Partners  
In Health  
ENGAGE

# What is PIH doing on TB?



## How can we make progress?

---

- Empowering global health budgets to tackle both the current issue & future research
- Bilateral TB flatlined at \$249 million for FY17
  - **Must be DOUBLED to make progress**



**Partners**  
**In Health**  
ENGAGE

## What will YOU do?

---

- World AIDS Day (December 1)
- World TB Day
- Ask your members of Congress to fund the fight
- Write LTEs and Op Eds



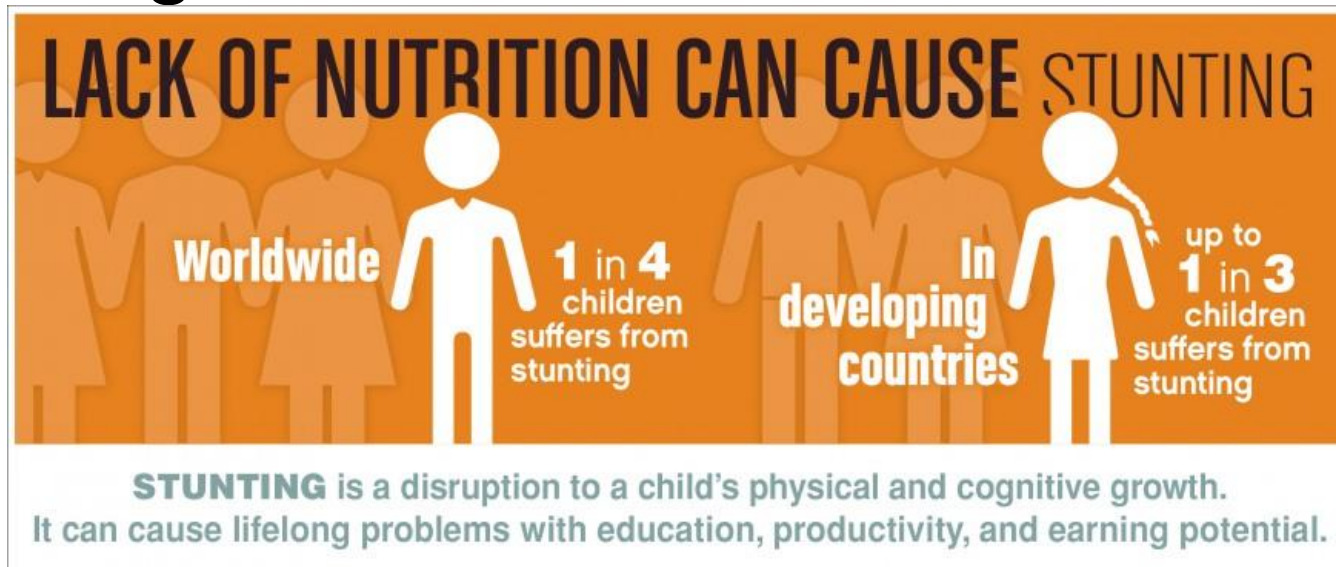
**Partners  
In Health**

ENGAGE

---

# **Nutrition: A global effort**

- Every year malnutrition kills more than 3 million children.
- World Bank and other starting to focus on Stunting.





- 
- Acute vs. Chronic malnutrition
    - PIH typically focuses on acute
  - Scale Up Nutrition
    - Global movement, USAID is a part:
      - Feed the Future program
      - Global Health initiative
  - Spring Campaign



## What will YOU Do?

---

- **In the Fall:**
  - Educate yourself and your team on Nutrition
  - Keep an eye open for opportunities
- **Possibilities in the Spring:**
  - Push for a strong nutrition pledge at G7
  - Stronger USAID nutrition funding
  - More to come!



**Partners  
In Health**

ENGAGE

---

# Campaign Timeline

- **Fall:**
  - Meetings with Congress, LTEs, and Call ins around Reach Every Mother and Child Act
  - Educational events on maternal and child health and nutrition
  - November Fundraising Campaign
  - World AIDS Week TB Action

- **Spring:**
  - Meetings with Congress, LTEs, and Call-ins around Nutrition funding
  - Education on TB, Nutrition, and Maternal and Child Health
  - World TB Day in March
  - Strides in Solidarity



**Partners  
In Health**  
ENGAGE

# Campaign Peaks

