

# **Mystic River Bicycle and Pedestrian Crossing**

**DCR Public Meeting**

**Monday, February 12, 2018 – 6:30-8:00pm  
Partners Health Care, Assembly Row  
399 Revolution Dr., Somerville, MA 02145**



# Commonwealth of Massachusetts

Governor  
**Charles D. Baker**

Lieutenant Governor  
**Karyn E. Polito**

Energy and Environmental Secretary  
**Matthew A. Beaton**

Department of Conservation and Recreation Acting Commissioner  
**Leo Roy**

Mayor of Somerville  
**Joseph Curtatone**

Mayor of Everett  
**Carlo DeMaria**

**AECOM**



## **DCR Mission Statement**

*To protect, promote and enhance our  
common wealth of natural, cultural  
and recreational resources  
for the well-being of all.*

## Tonight's Meeting - Purpose

- Provide an overview of the conceptual design for the Mystic River Pedestrian and Bicycle Crossing.
- Provide an opportunity for the public to comment on the conceptual design of the bridge.



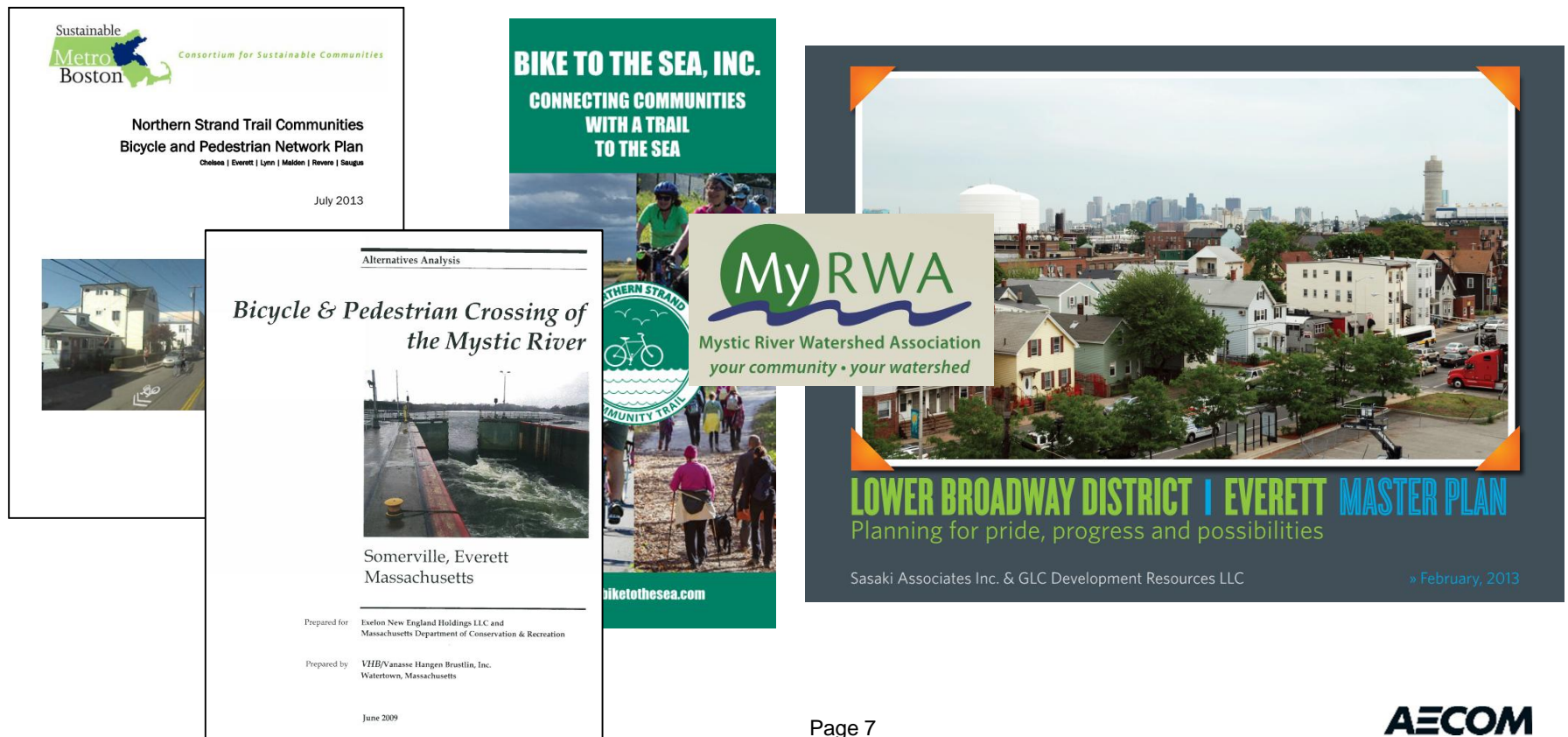
# Project Purpose

## Project Purpose

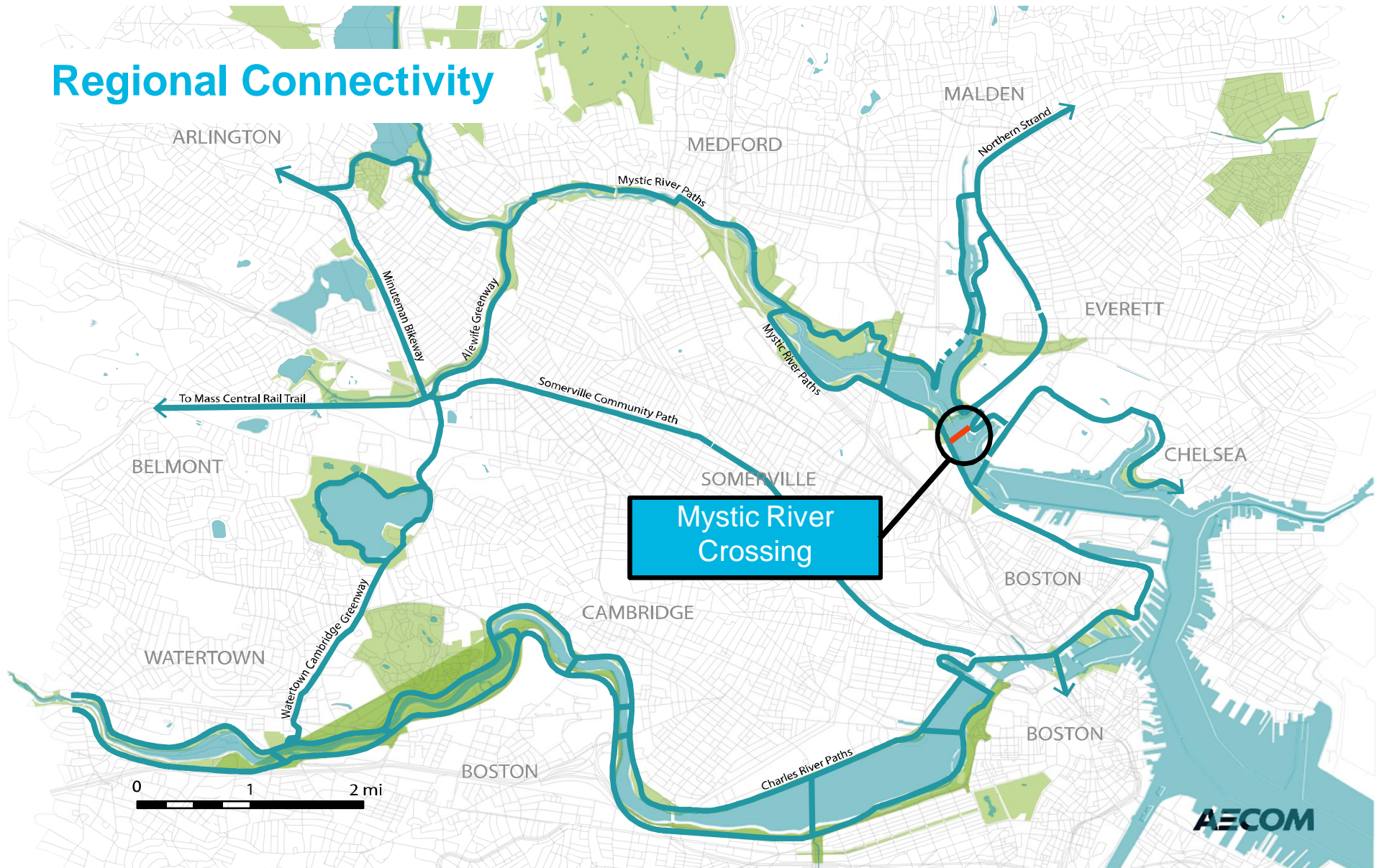
- **Regional Connectivity:** Provide Missing Link in Regional Trail Network
  - Northern Strand across the river to the MBTA
  - North and South along the Mystic River
- Reduce traffic by providing pedestrian and bicycle access
  - Between Everett and Somerville
  - From Somerville to surrounding areas
- Provide Everett access to the MBTA (Assembly Station)

# Project Purpose

## Multiple Planning Studies recommend the Mystic River Crossing

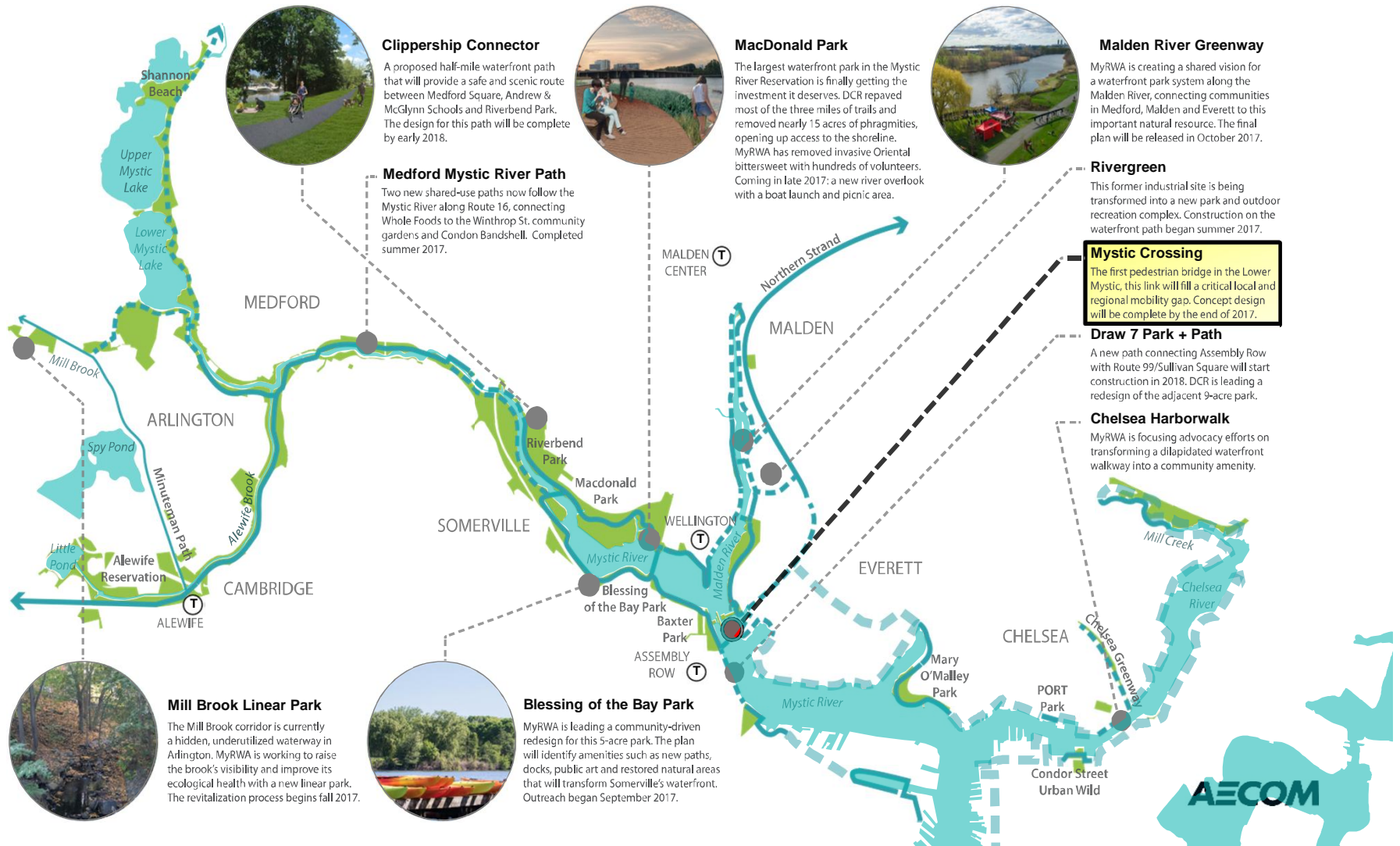


# Regional Connectivity

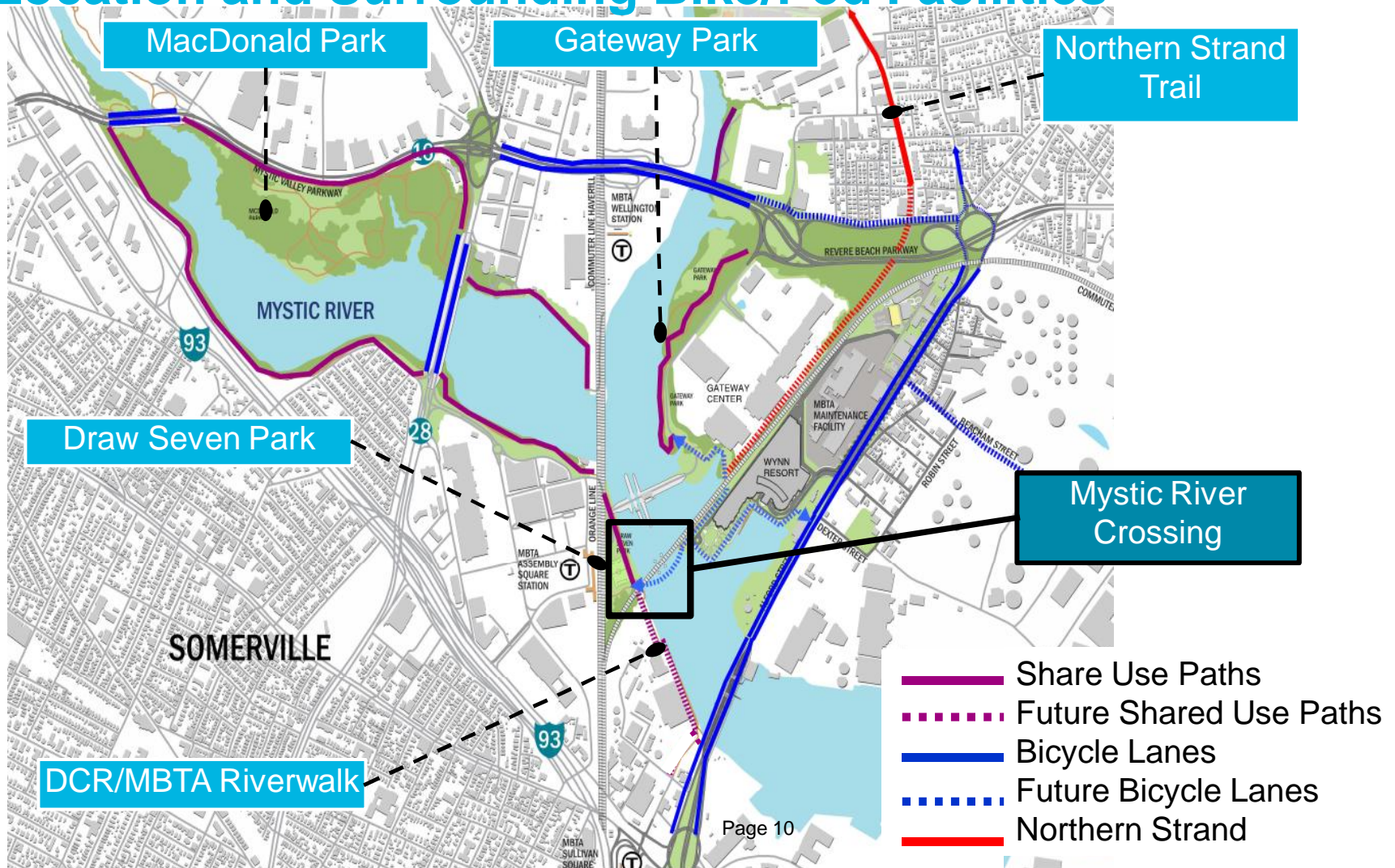




# MYSTIC GREENWAYS PROGRESS

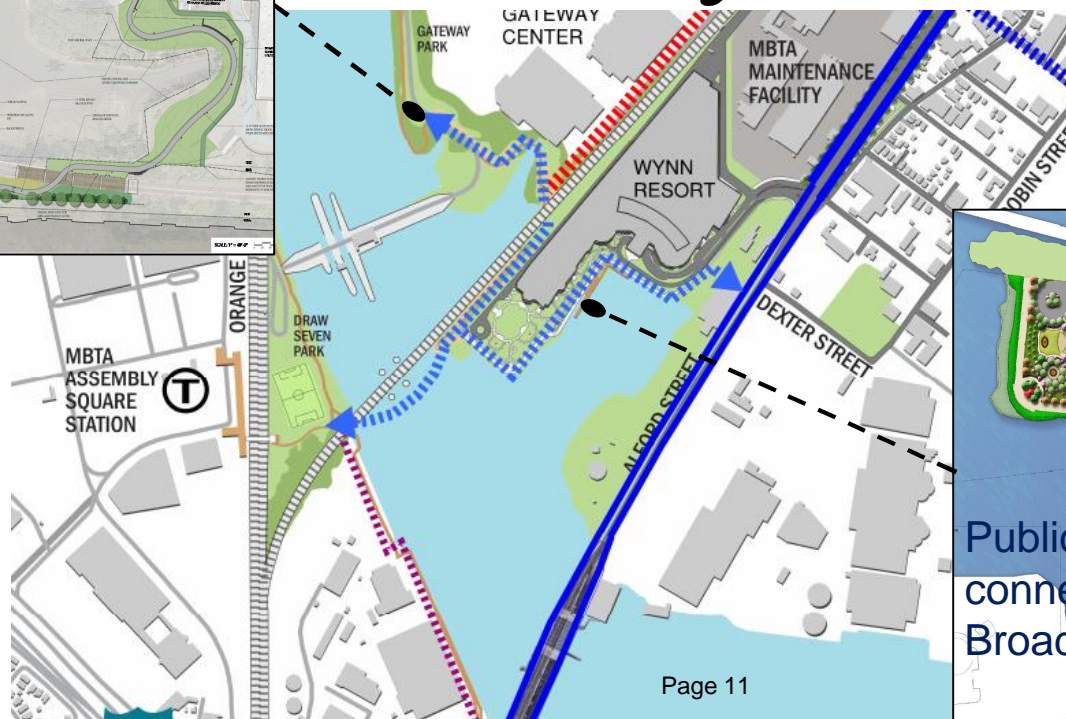
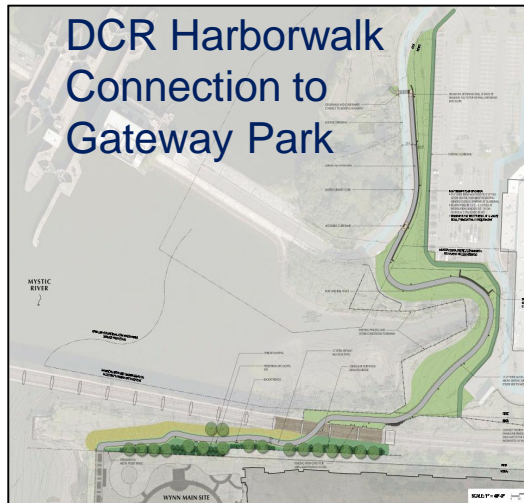


# Location and Surrounding Bike/Ped Facilities





# Proposed Bicycle – Pedestrian Connections North Landing



# Proposed Bicycle – Pedestrian Connections South Landing

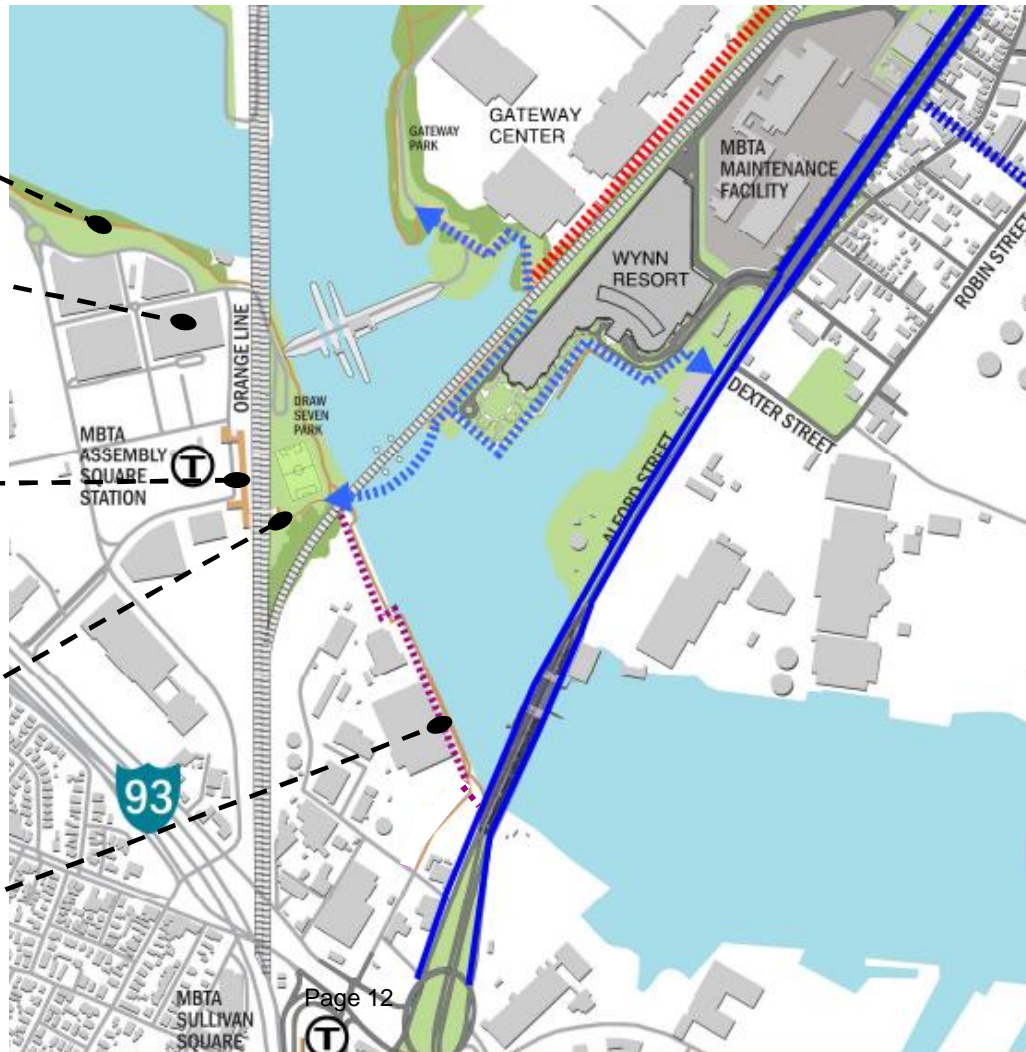
Mystic River Trail

Assembly Row

MBTA Assembly  
Station

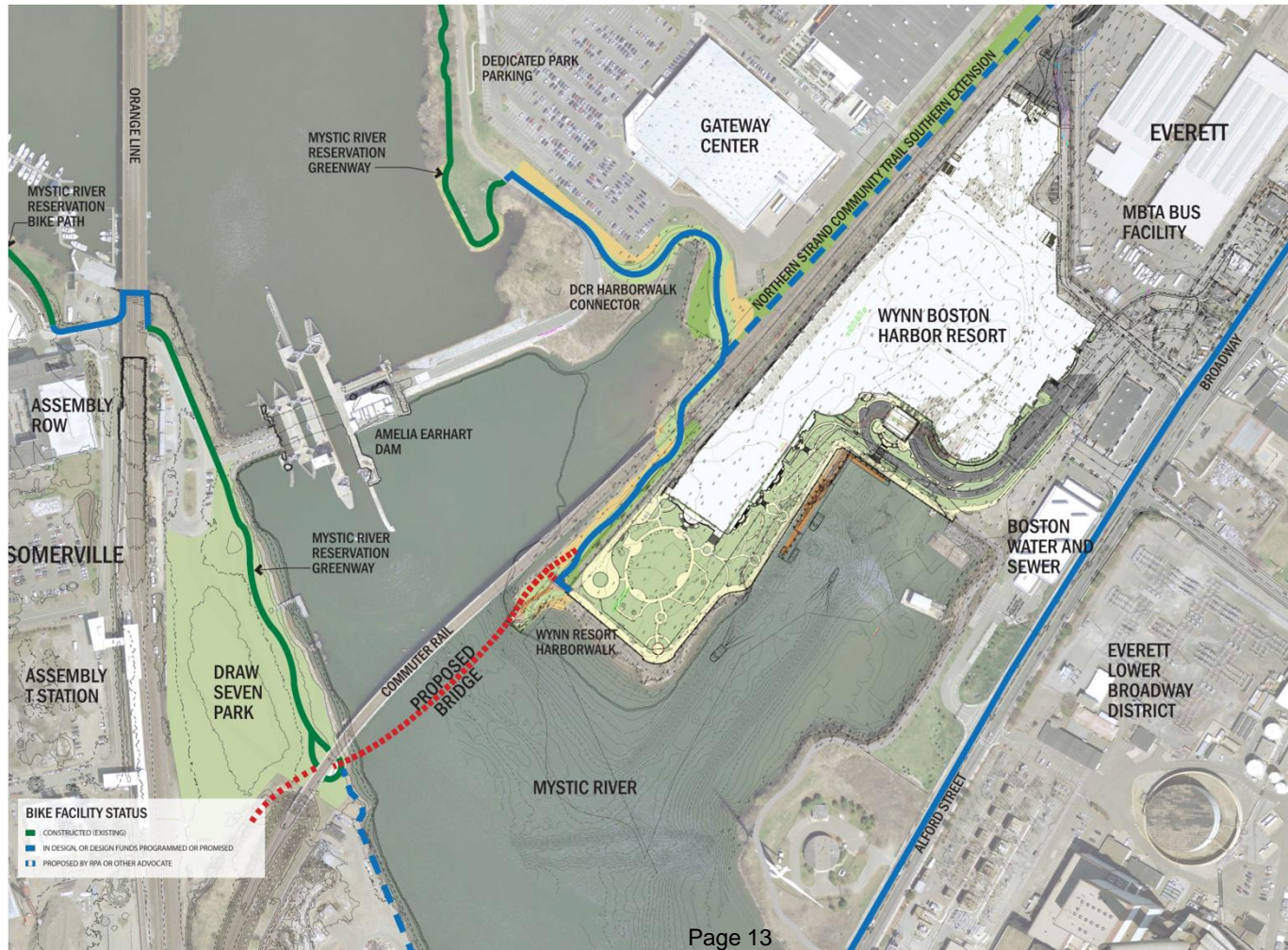
Draw Seven Park

DCR/MBTA  
Riverwalk







# Location and Surrounding Facilities



## Pedestrian and Bicycle Use Forecast

- Estimated volumes on new bridge:

Weekday		Weekend
2,040		2,320
350		390
<hr/>		
2,390		2,710

- Bridge serves different trips:
  - Everett ↔ Assembly Sq.
  - Recreational
  - Lower Broadway and Wynn employees
  - Assembly Row/Wynn patrons



# Stakeholder Process

# Stakeholder Process

## *Stakeholders*

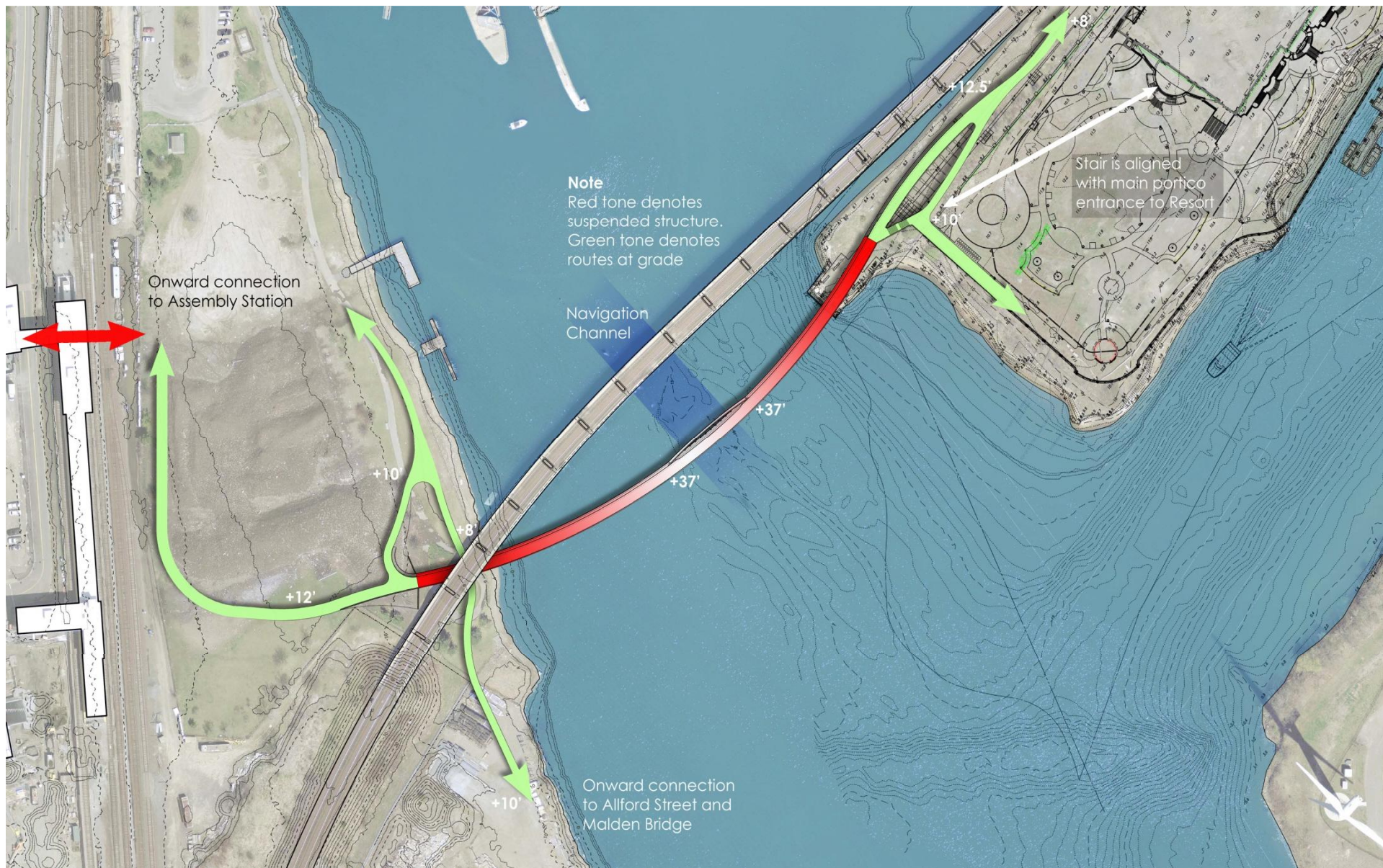
- DCR
- City of Somerville
- City of Everett
- MBTA
- MassDOT
- Mystic River Watershed Association
- Massachusetts Gaming Commission
- Federal Realty Trust
- Wynn Boston Harbor

# Bridge Alignment

## Alignment Objectives

- Most direct route
- Limit foundations in water
- Vertical Clearance
- Future Silver Line bridge not to be precluded
- Connection to Harborwalk and Draw 7 Park
- Onward Connection to the MBTA Assembly Station and Assembly Row





# Landings







South Landing -  
Somerville Touchdown

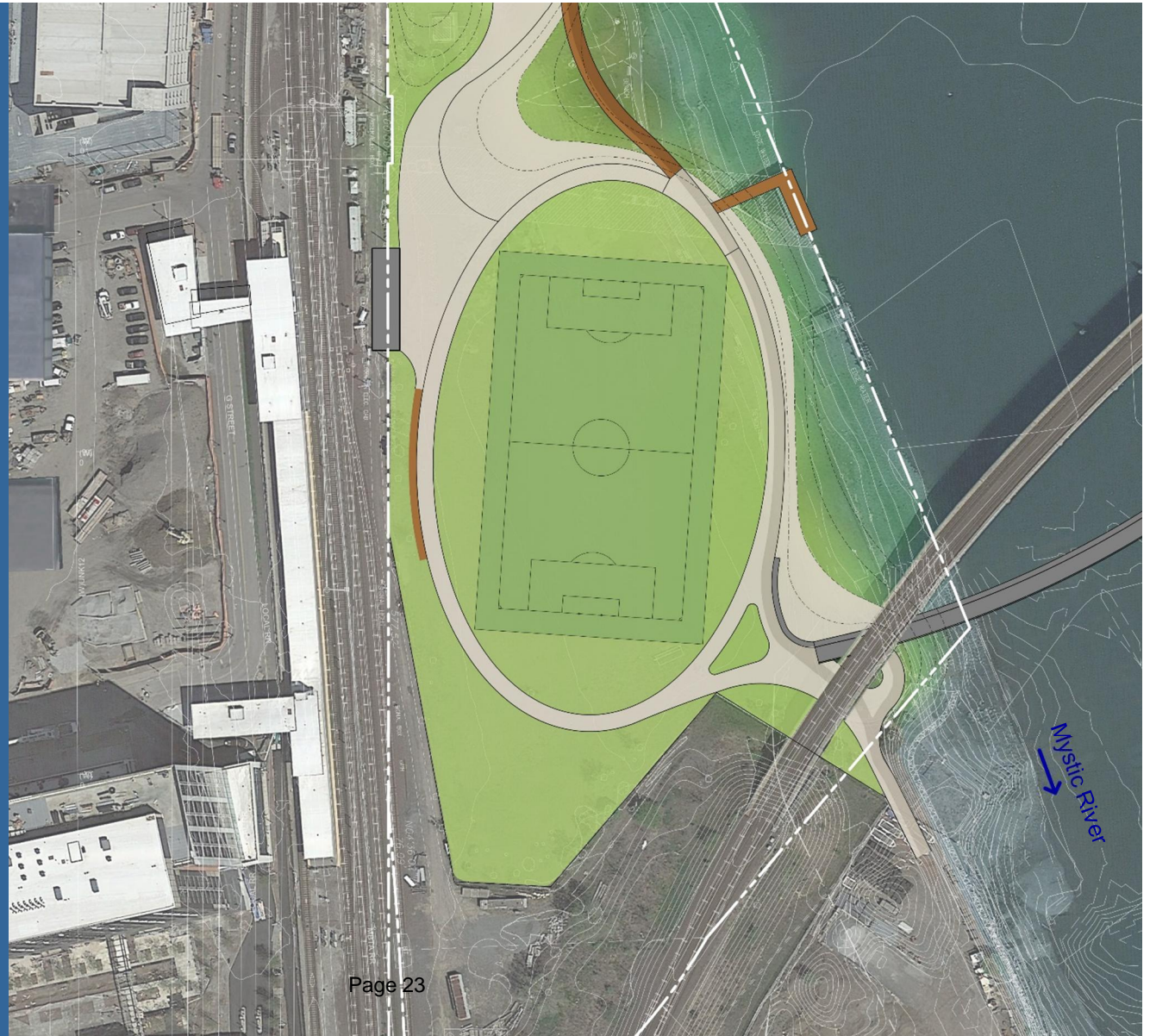
Draw 7 Park  
Destinations





# South Landing - Somerville Touchdown

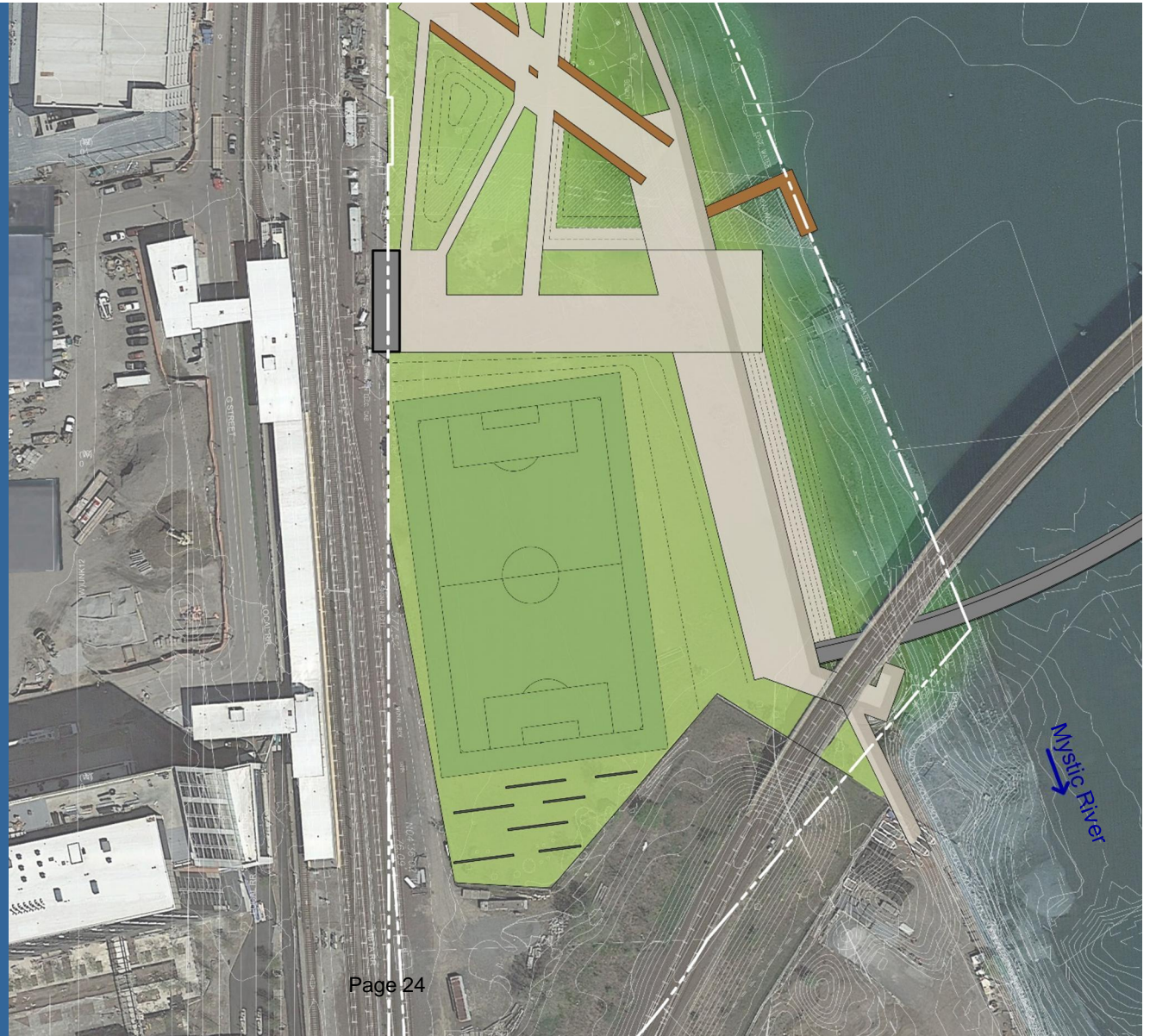
## Draw 7 Park Option A - Curves





# South Landing - Somerville Touchdown

Draw 7 Park  
Option B - Angles





# North Landing - Everett Touchdown

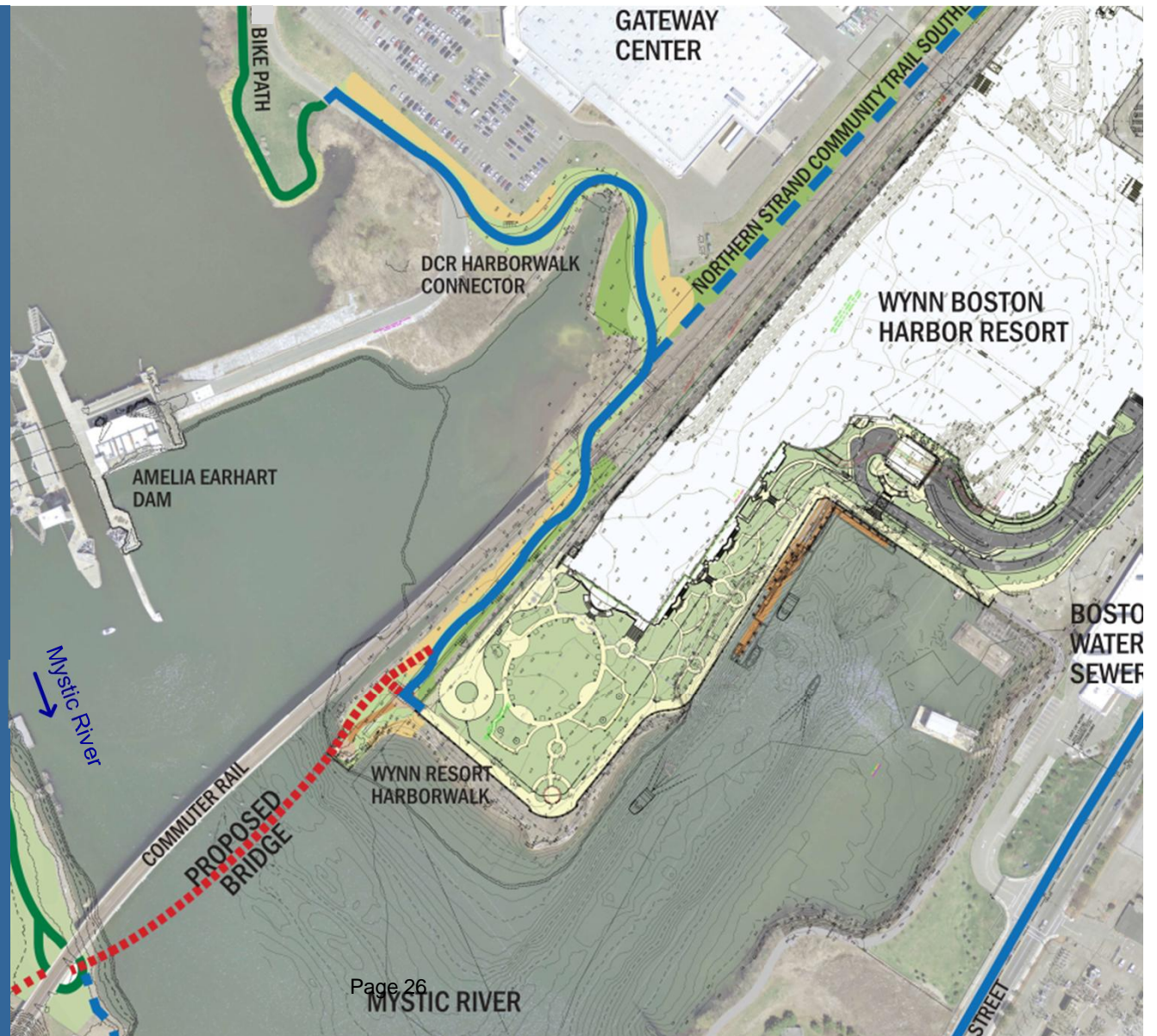
## Wynn Boston Harbor





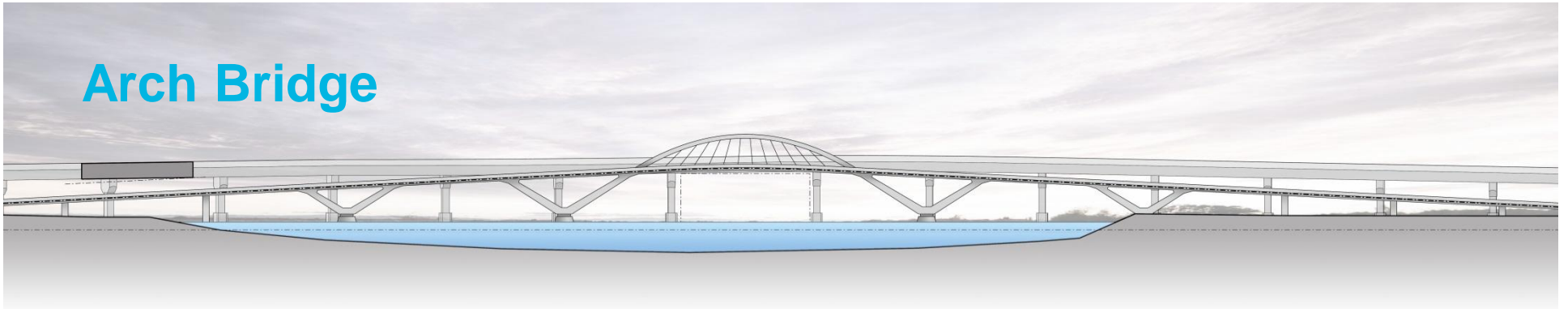
# North Landing - Everett Touchdown

## Wynn Boston Harbor



# Structure

## Arch Bridge

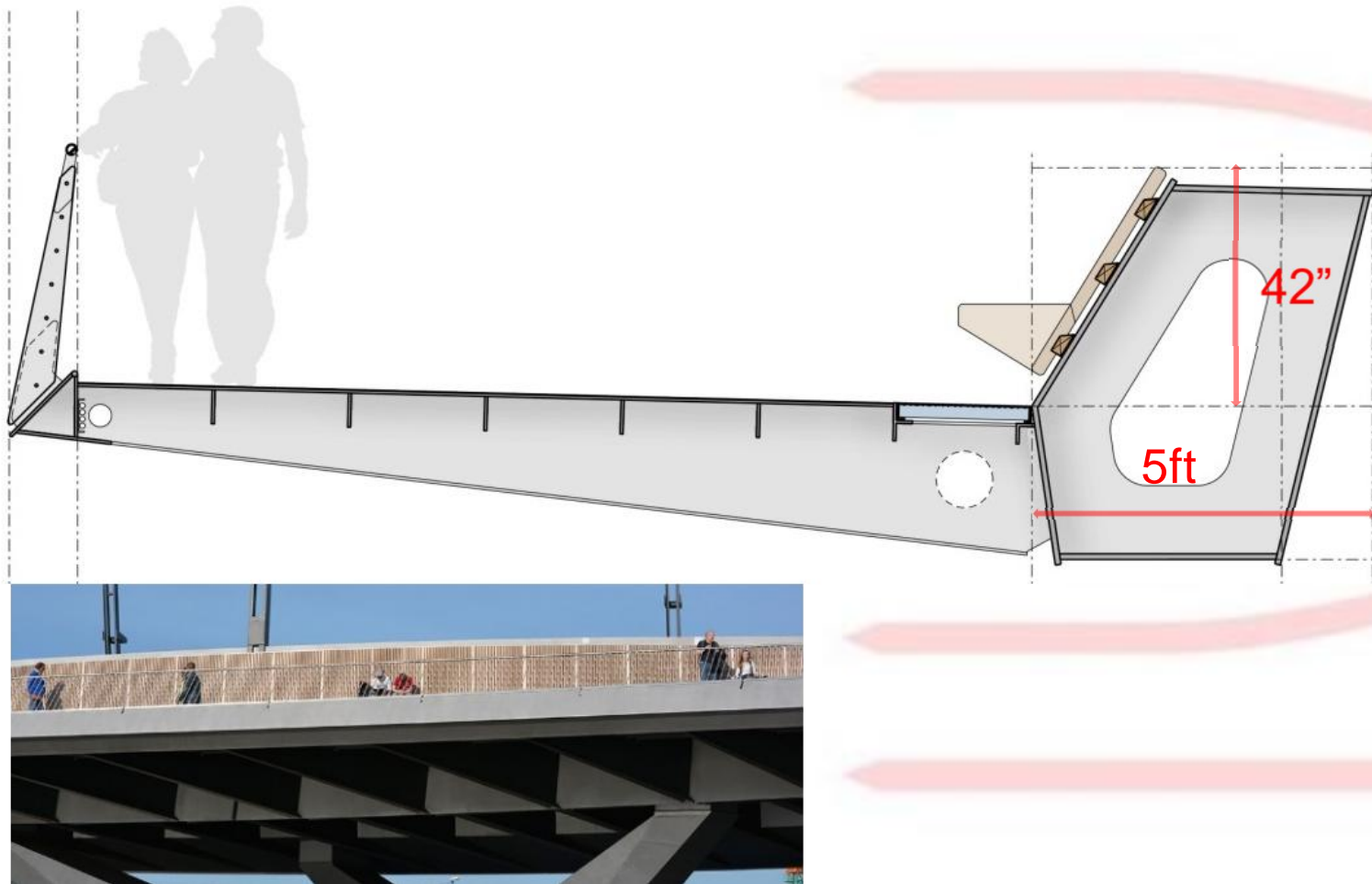


### Preliminary Structure Design

- Steel Floor Beams – tapered design
- Steel Plate Deck
- Steel V-Piers
- Drilled Shafts (6' and 8' diameter)
- “Floating Pier Caps” in water to eliminate cofferdams



# Upright Beam











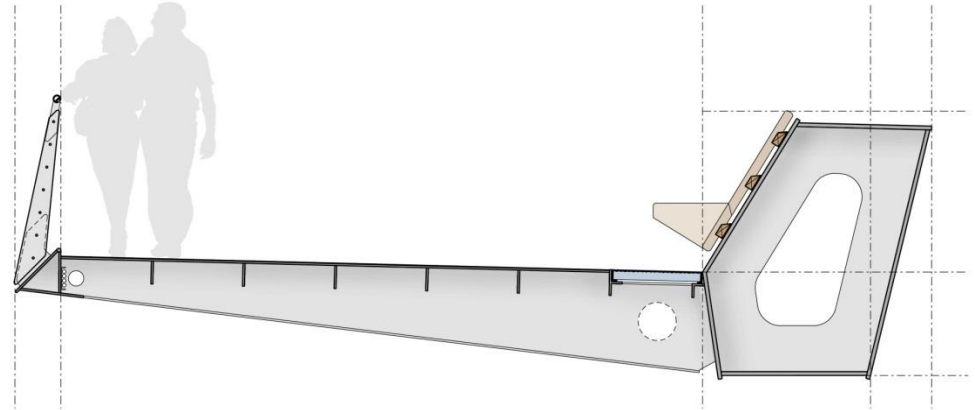
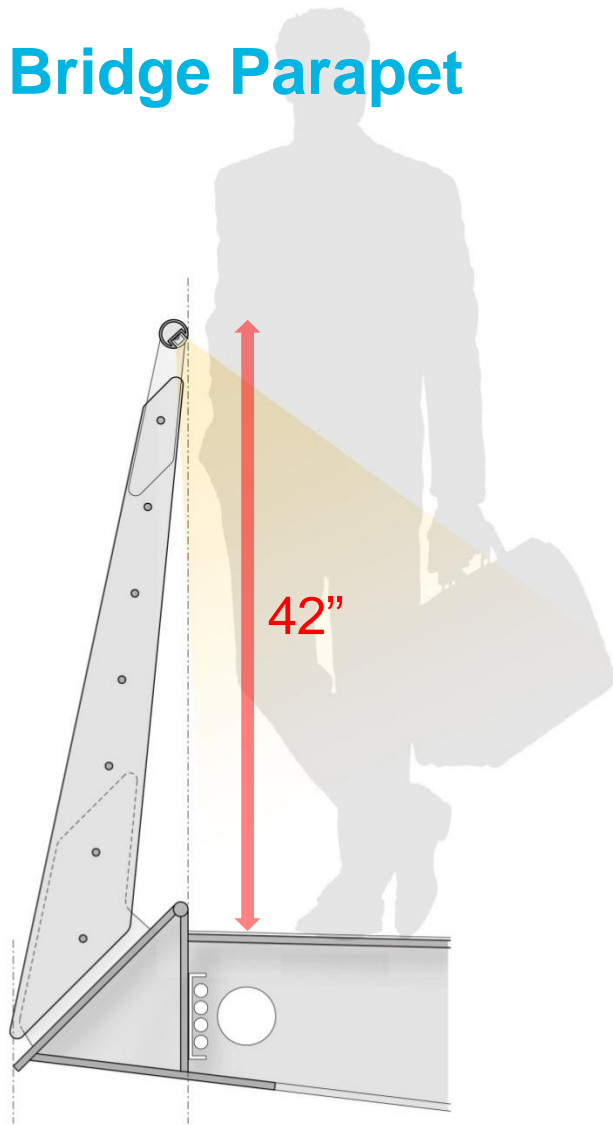




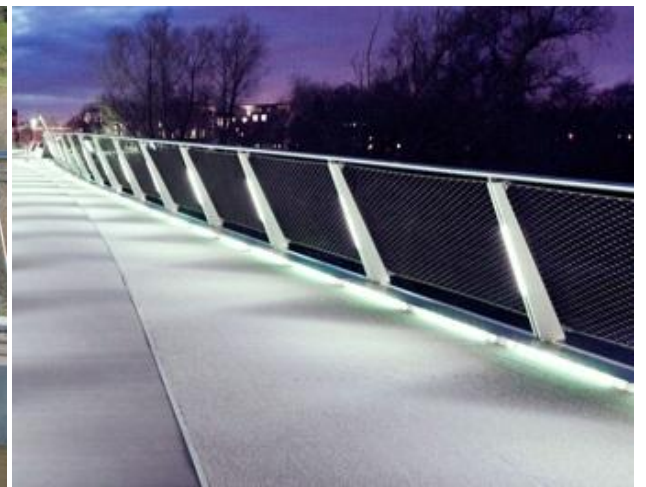
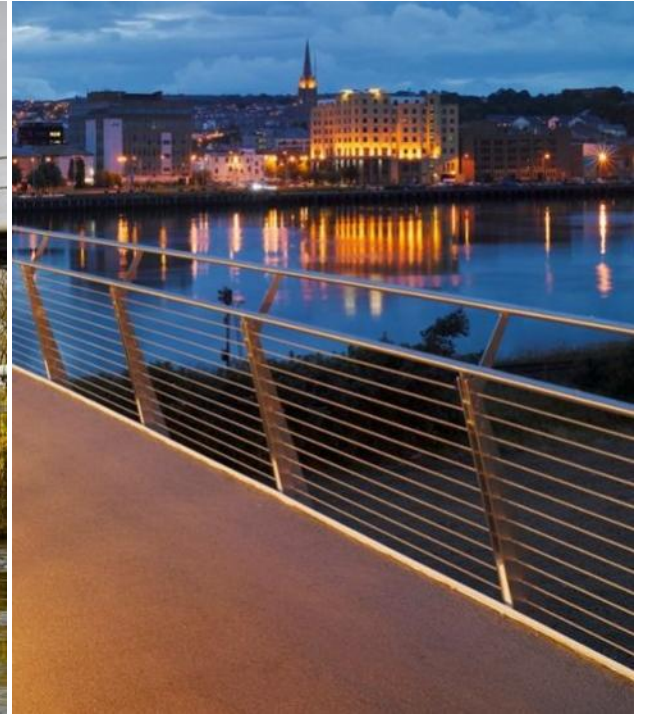


# Bridge Elements

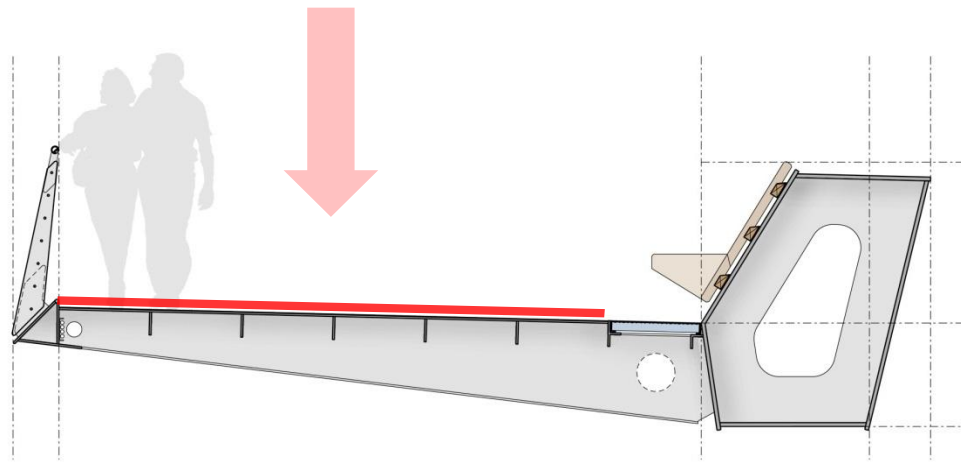
## Bridge Parapet



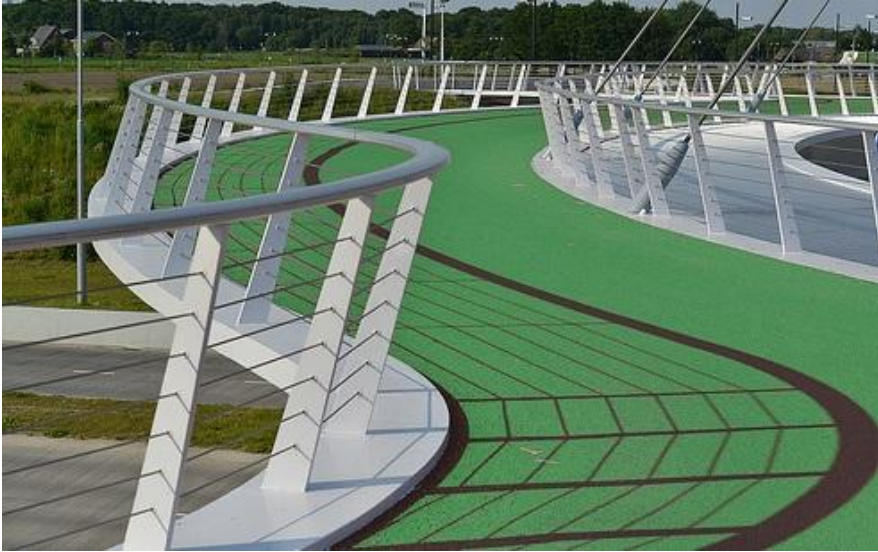




# Deck Surfacing

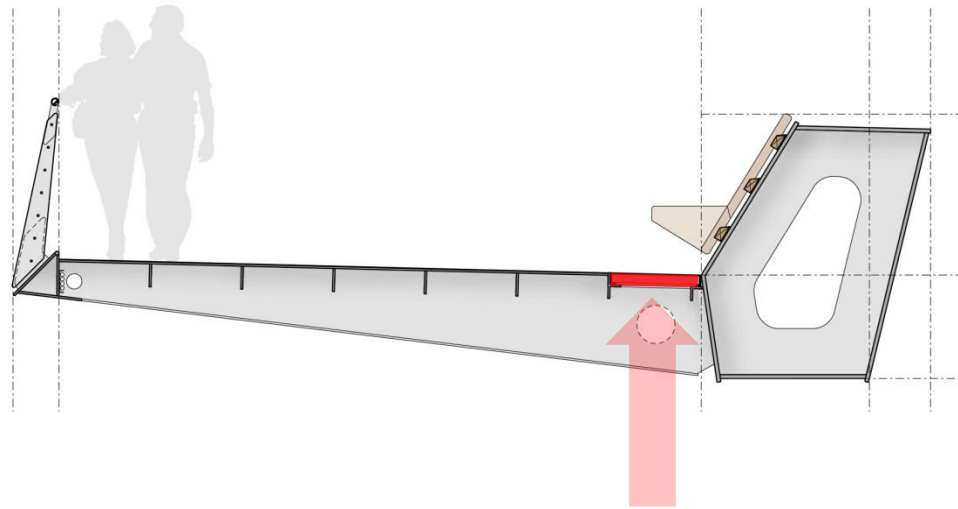




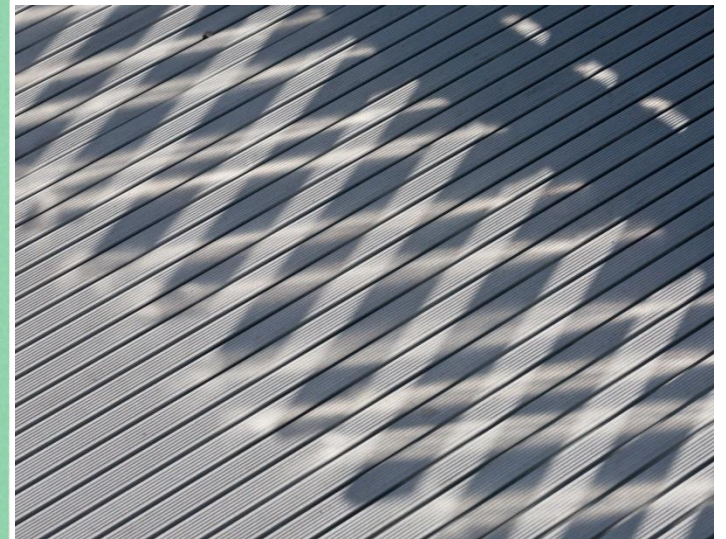
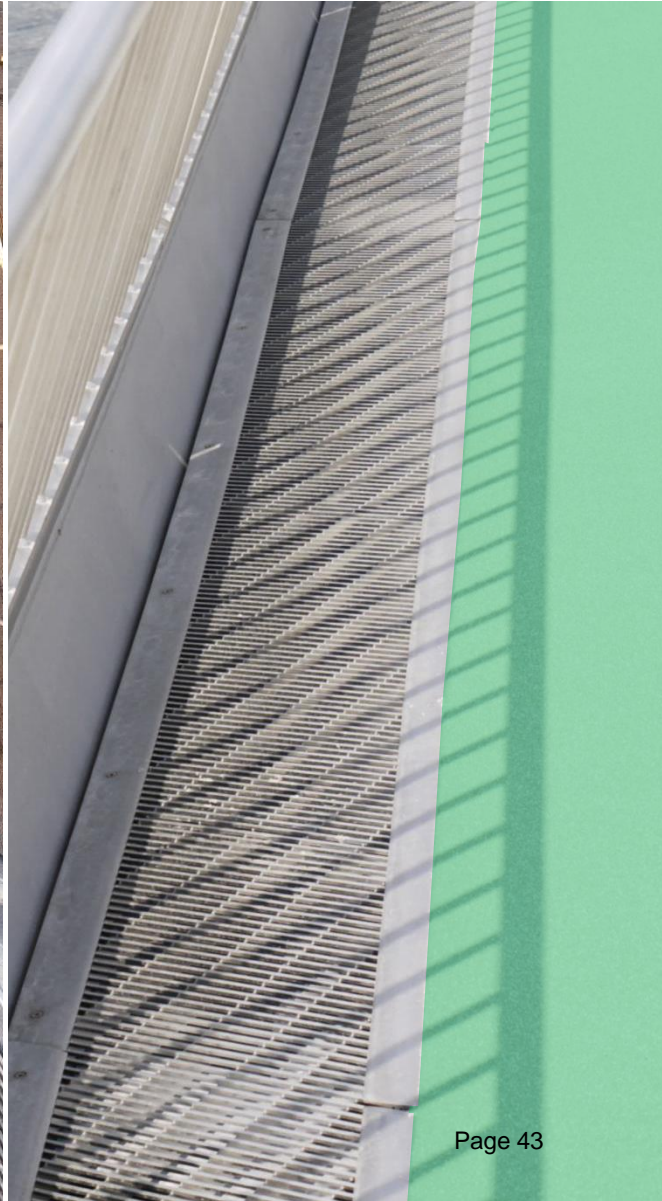
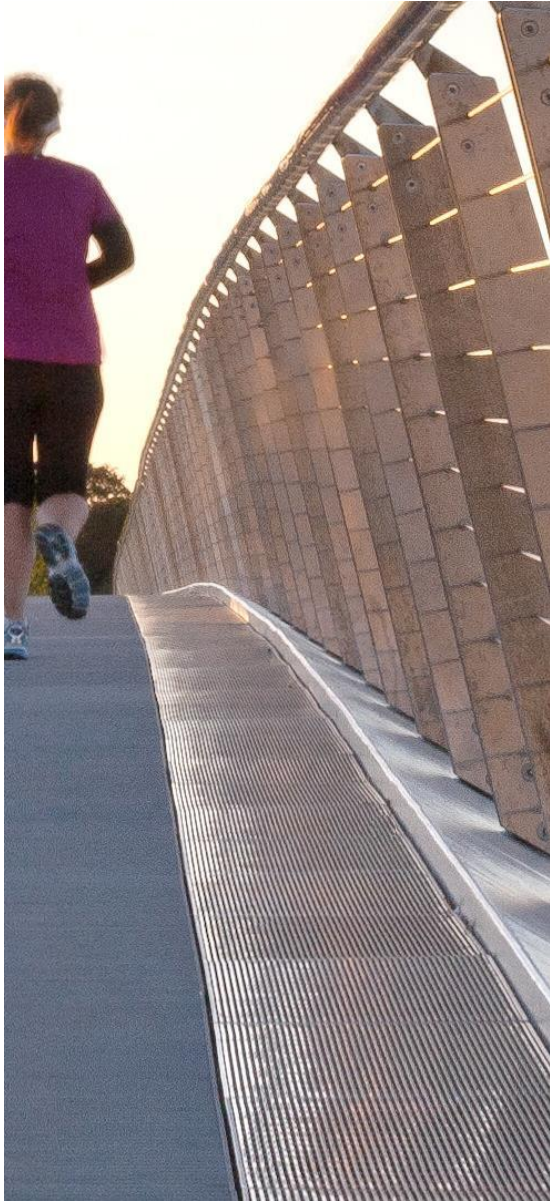




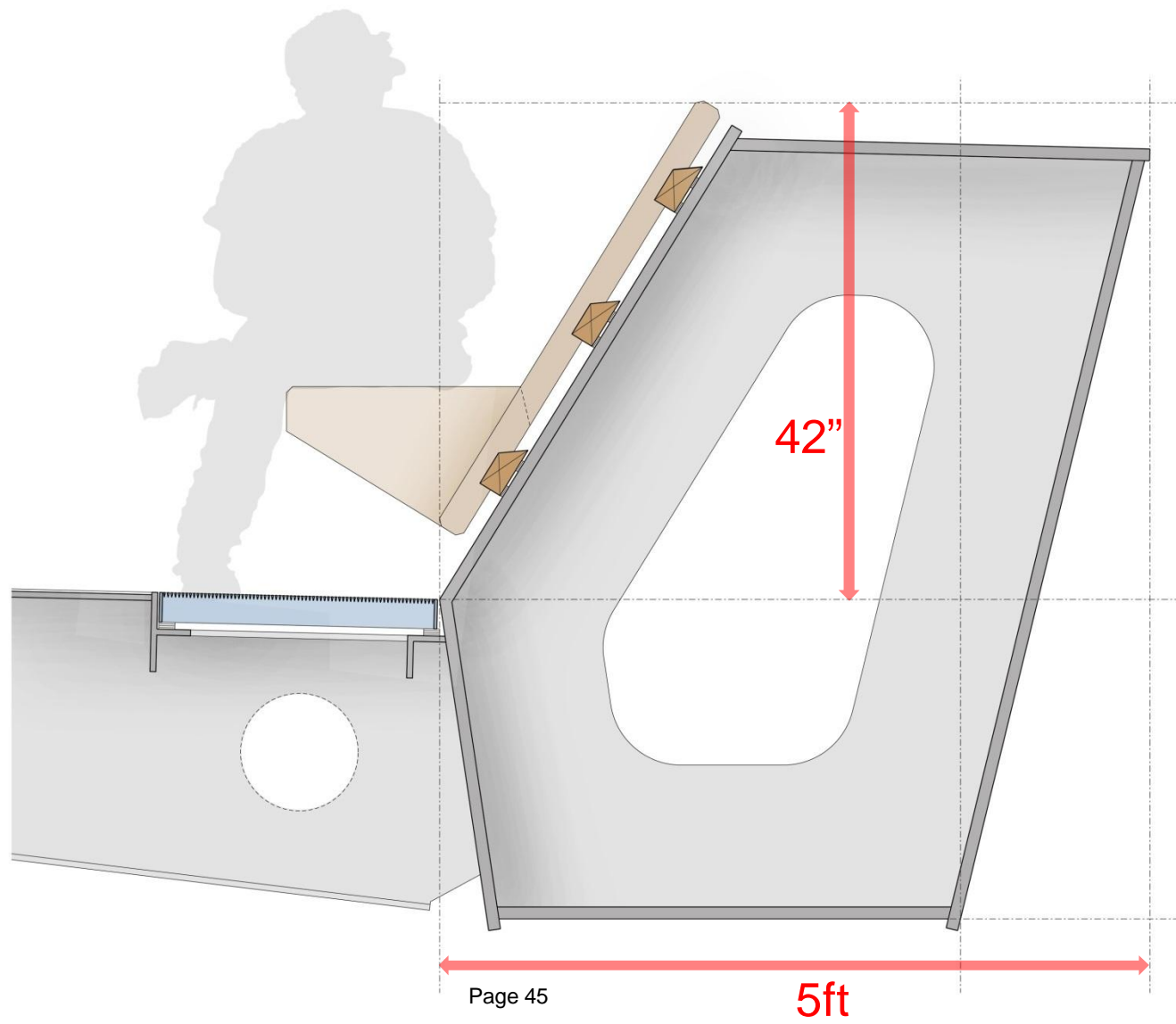








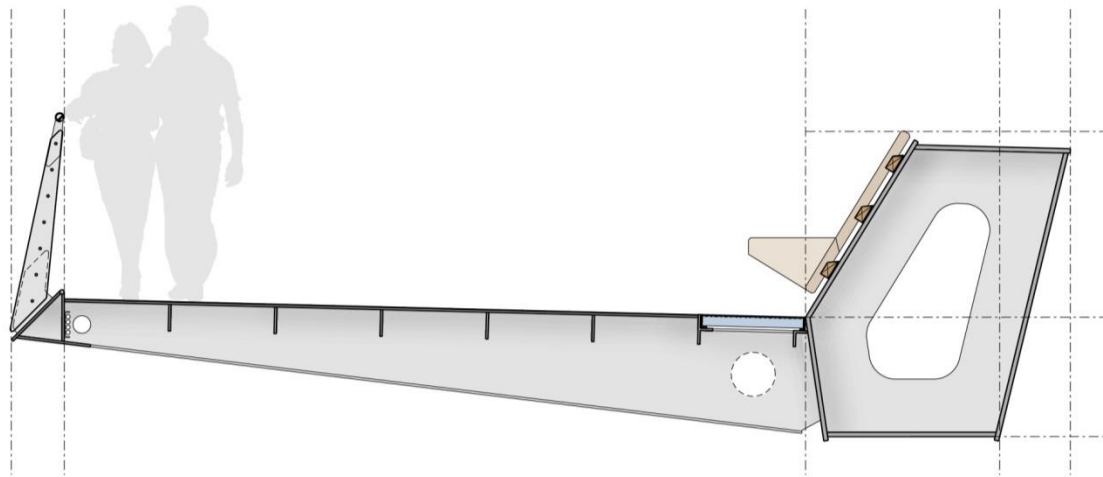
# Coordinated Seating







Soffit







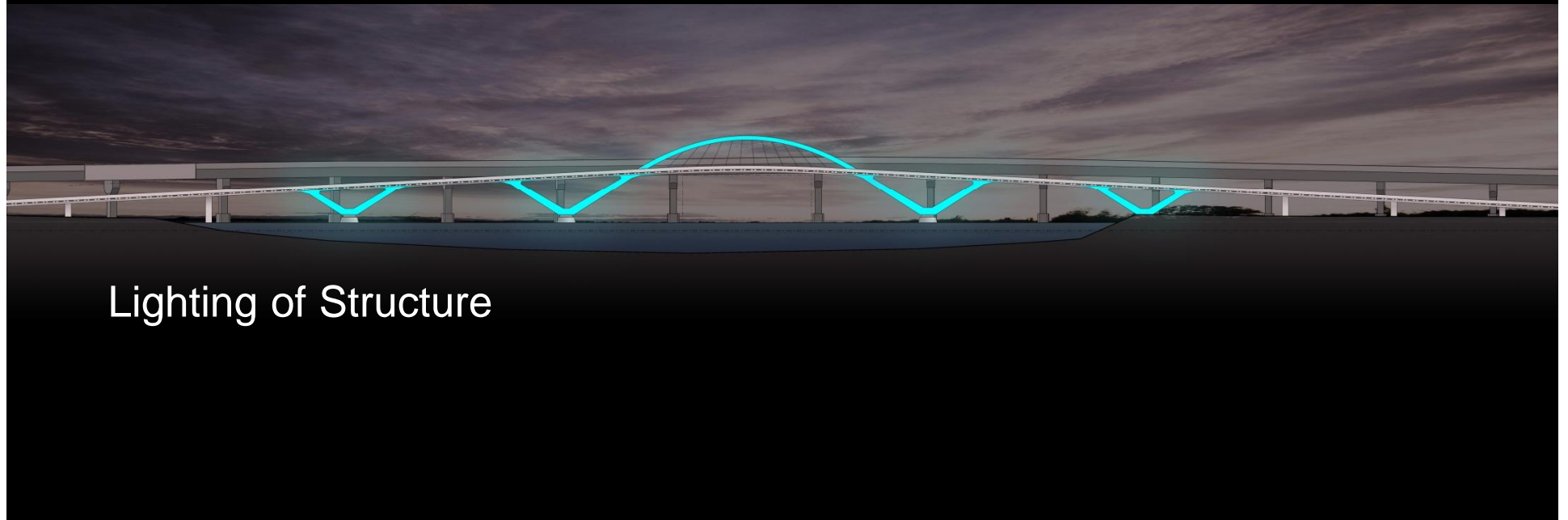
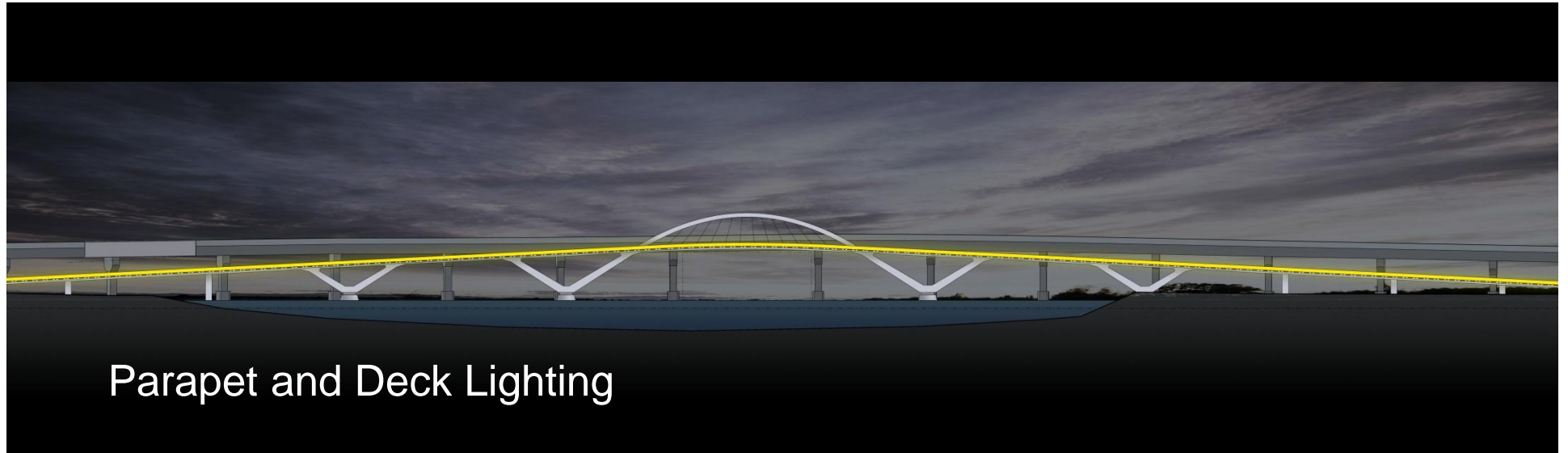
# Fabrication







# Bridge Lighting Options





Parapet and Deck Lighting



Lighting of Structure



# Preliminary Cost Estimate

## Preliminary Cost Estimate

Estimated Construction Cost = \$22,600,000

(Includes Design, Construction and Construction Engineering)

# Permitting



## Permitting

Approximately 19 agencies:

- 5 federal agencies
- 8 state agencies
- 6 local agencies (3 each in 2 cities)

Approximately 14 actions (permits, licenses, reviews):

- 3 federal action
- 5 state actions
- 6 local actions

## Permitting (cont.)

### – Timeline

- Federal approvals (United States Coast Guard (USCG) / United States Army Corps of Engineers (USACE)) will take the longest duration (10-12 months)
- Chapter 91 will take approximately 9 months

## Additional Information

For more information:

<https://www.mass.gov/service-details/materials-from-past-meetings>

If you have comments or suggestions on this project:

*Submit online:*

<https://www.mass.gov/forms/dcr-public-comments>

*Write:* Department of Conservation and Recreation  
Office of Public Outreach  
251 Causeway Street, Suite 600  
Boston, MA 02114

***Deadline: Wednesday, March 7, 2018***

*Note: Public comments submitted to DCR may be posted on the DCR website in their entirety, and no information, including personal information, will be redacted.*

If you have questions or concerns or wish to subscribe to a DCR general information or project-related listserv: contact DCR's Office of Community Relations at 617-626-4973 or [Mass.Parks@state.ma.us](mailto:Mass.Parks@state.ma.us).



# Questions and Answers & Potential Next Steps