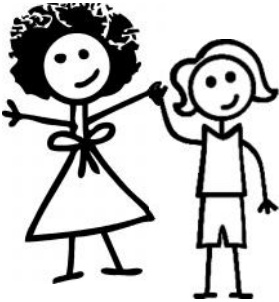


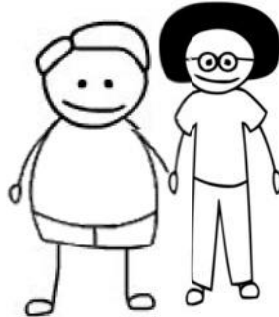


Glossary

Sexual Orientation: a lasting emotional, romantic, sexual, or affectionate attraction toward other people.



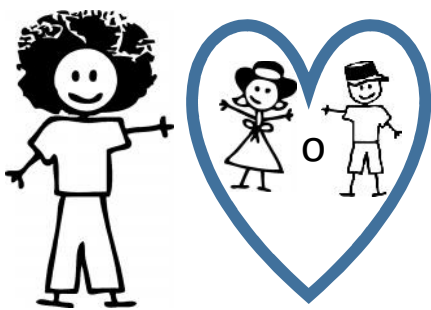
Lesbian: a woman that is sexually, physically or emotionally attracted to women.



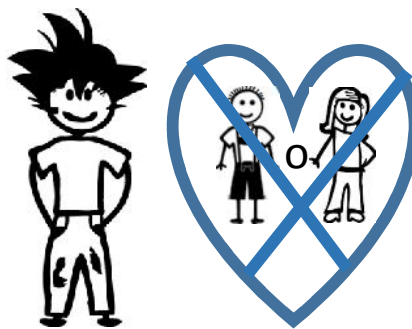
Gay: a man that is sexually, physically or emotionally attracted to men.



Heterosexual: a man or a woman that is sexually, physically or emotionally attracted to people of the opposite sex.



Bisexual: a person that is sexually, physically or emotionally attracted to people regardless of their gender.



Asexual: a person that does not feel sexual attraction for other people.

Queer: a general term used by people in LGBTQ communities to describe people who do not identify with any specific category or label with respect to their sexual orientation.

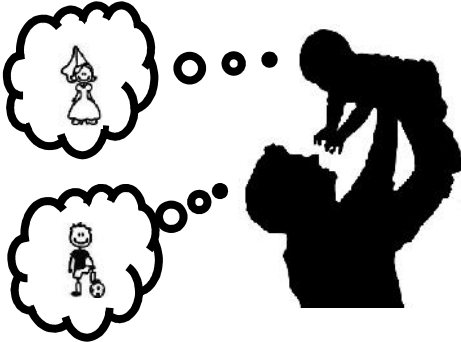
Creado por:



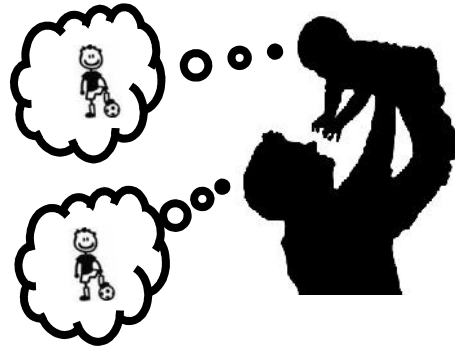
Glossary



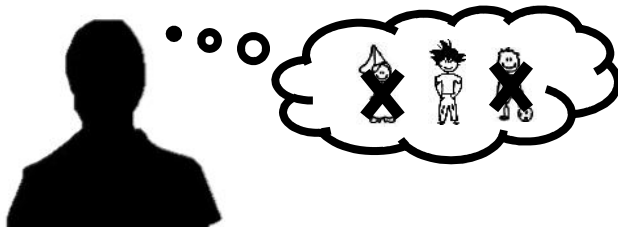
Gender Identity: the way each person identifies internally with regard to gender. This could or could not correspond with the sex they were assigned at birth.



Transgender: people who do not identify as the sex they were assigned at birth (based on their genitalia).



Cisgender: people who identify as the sex they were assigned at birth. This term is used to describe people who do not identify as transgender.



Genderqueer: people who do not identify as female or male, that identify as both of those genders, or that identify as a third gender.



Agender: people who do not identify or conform to any of the socially established genders.



Two Spirit: people that embody multiple gender roles, like characteristics, dress, and tasks associated with both males and females. The term originated with native people in the United States and Canada.



Glossary

Gender Expression: the way in which a person presents themselves, including their behavior, interests, and affinities, which can be considered feminine, masculine, or a combination of the two.

A PERSON'S GENDER EXPRESSION IS NOT NECESSARILY RELATED TO THEIR SEXUAL ORIENTATION OR GENDER IDENTITY.



Drag: A person who dresses in a way traditionally associated with the opposite sex, generally for artistic or entertainment purposes.

More Terms



Intersex: a person who is born with a sexual or reproductive anatomy different from that typically associated with men or women.



Questioning: Sometimes the Q in LGBTQ represents Questioning, a term used to include people who are exploring their sexual orientation or gender identity.