

Site 2 - Potential Site - Fish Lake Road



Description: An off-road, unmarked access site, the Fish lake Road site was recently acquired by Friends of the Shiawassee to serve as a public recreation space. Access to the river is very limited by thick vegetation, and is impassible and not visible during the summer.

Potential Improvements: Develop a walking path from the parking area, create a designated boat launch. Open facility for bathroom, trail information, and water filling stations. Utilize garages for boat storage. Potential for kayak/ canoe rental outfitter. Opportunity for parking and picnic areas.

Site 2 - Potential Site - Fish Lake Road



ACCESS

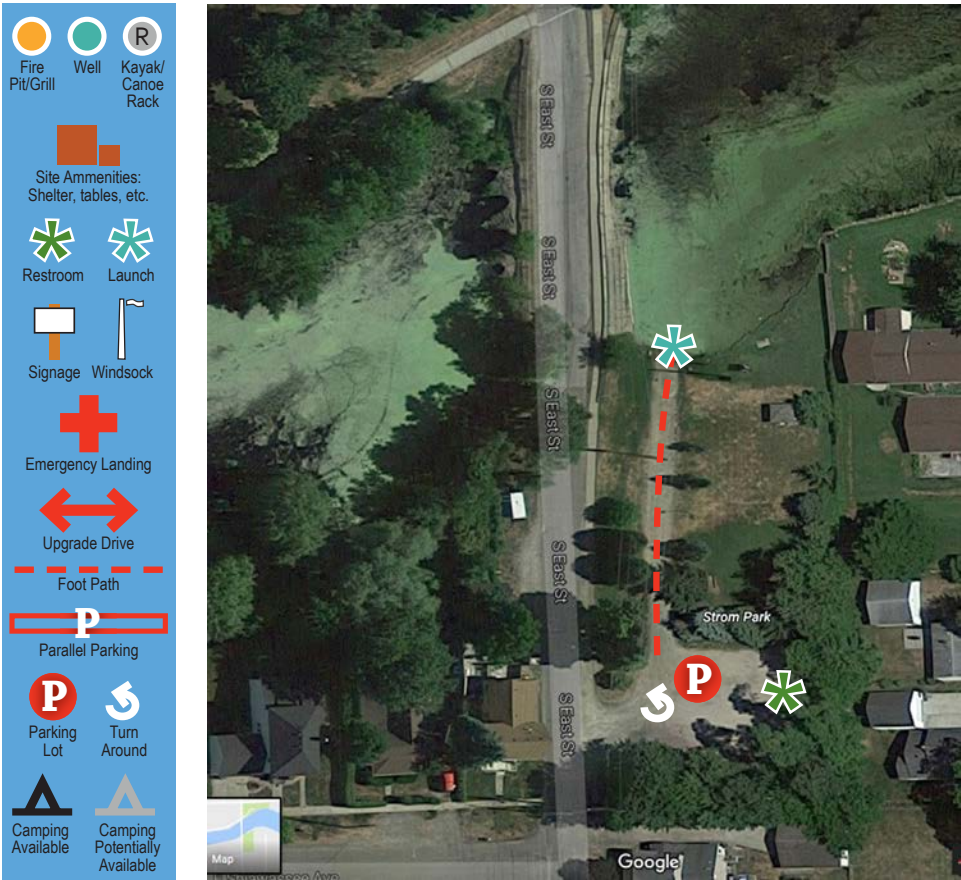
Recently acquired property



ACCESS

Very limited, dense vegetation

Site 3 - Strom Park (Requires Portage)



Description: Highly visible from the river, Strom Park is the first access point that requires portage on the river from WaterWorks Park (7 miles). The park is highly active with picnic areas and fishing docks. The section between Strom Park and Fenton Mill Pond Dam is a non-contiguous section of the river, and paddlers should put in at Fenton Mill Pond Dam.

Potential Improvements: Develop a specified kayak and canoe launch area so as not to disturb fish spawning pools near the dam. Create an ADA Accessible path and Boat launch, vault toilets, site map kiosk. Restabilize the shoreline with natural plantings buffer to allow for 8-10 ft of unmowed area along the river's edge.

Site 3 - Strom Park (Requires Portage)



Site 4 - Fenton Mill Pond Dam (Requires Portage)



Description: While there are no developed kayak or canoe launch facilities, this is a busy, highly visible site access right in the middle of town. Paddlers will find many amenities such as comfort stations, food and beverage service, well-lit walking paths, trash receptacles, and scenic bridges. There is ample parking, and proximity to a paddle sports livery in Downtown Fenton.

Potential Improvements: Create ADA accessible boat launch, or developed gravel carry-in. Install Heritage Water Trail wayfinding signage.

Site 4 - Fenton Mill Pond Dam (Requires Portage)

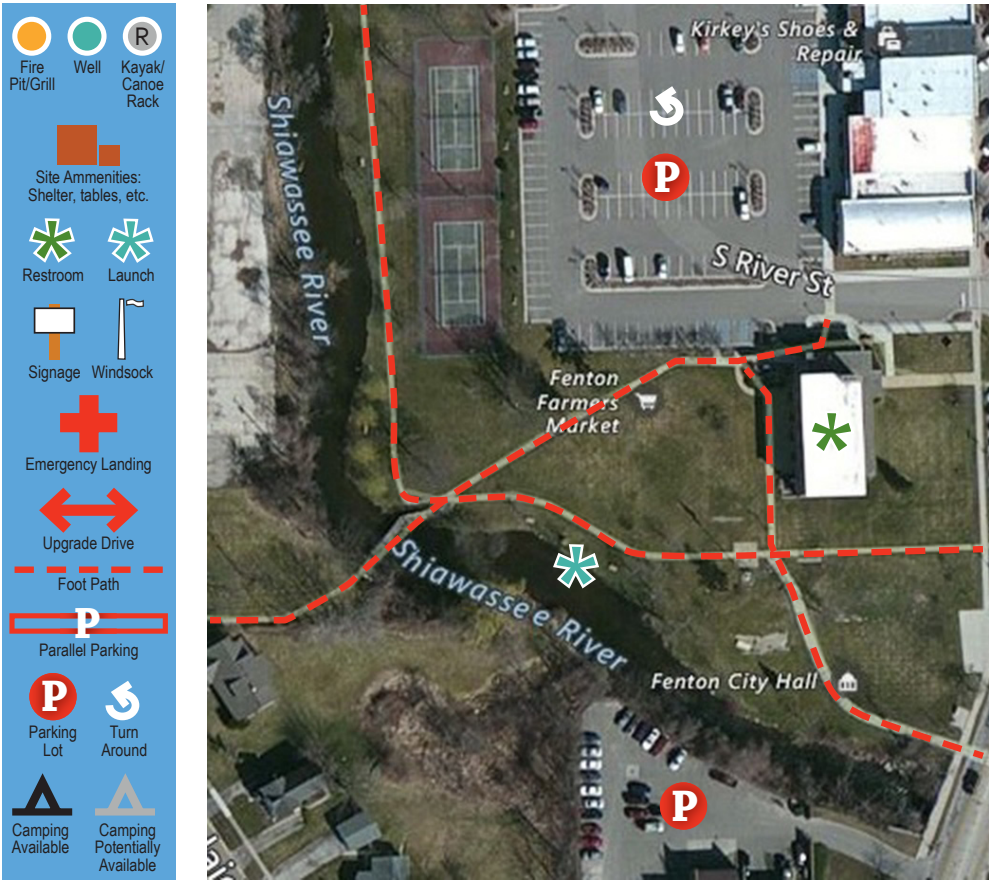


AMENITIES Food station/comfort station



LAUNCH Undeveloped 1-2 ft rock
embankment

Site 5 - Rackham Park



Description: Rackham Park sits adjacent to the Fenton Mill Pond Dam access site, and has several visible access areas for paddler sport put-in and take-out spots, although no developed launches. There is access to public bathroom facilities, ample parking, and proximity to restaurants.

Potential Improvements: Developed ADA accessible boat launch. Install Heritage Water Trail wayfinding signage. Restabilize the shoreline with natural plantings buffer to allow for 8-10 ft of unmowed area along the river's edge.

Site 5 - Rackham Park



LAUNCH Natural embankment (1-2 feet)



NATURAL FEATURES Riffles



AMENITIES Community center



MARKERS Bridge over water

Site 6 - Bush Park



Description: The Shiawassee River winds nearly half a mile through Bush Park, located behind St. John’s Catholic Church and School. The park has two launches, one at each end of the park that are gravel/limestone carry- in sites with low banks and shallow water making it an easy stopping place. Neither launch site is visibly marked or clear from land.

Potential Improvements: Heritage Water Trail wayfinding signage on land an in the water. Vault toilets and water filling stations. ADA accessible launch.

Site 6 - Bush Park



SIGNAGE Heritage signage



AMENITIES Restrooms and potable water

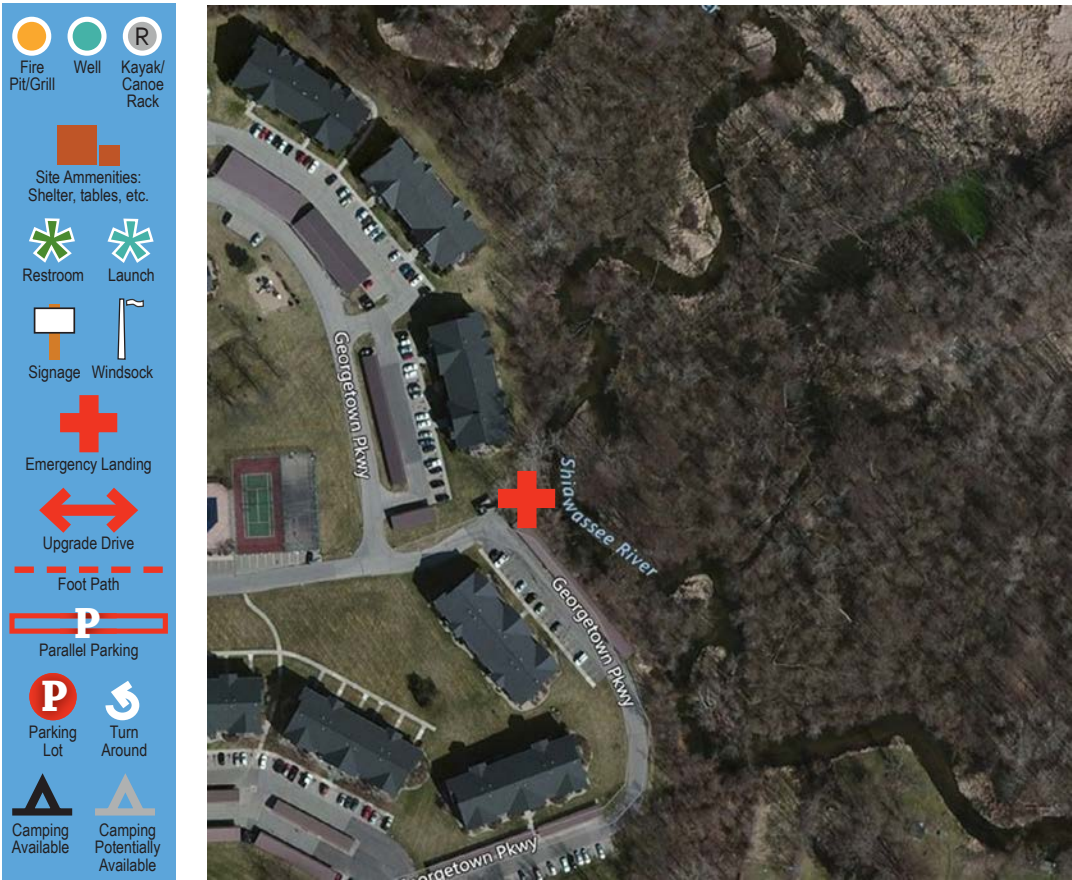


LAUNCH Developed gravel carry-in



ACCESS Within the park, walking path

Site 6.1 - Emergency Access - Georgetown Parkway



Site 6.2 - Emergency Access - Torrey Road

Fire Pit/Grill

Well

Kayak/Canoe Rack

Site Amenities: Shelter, tables, etc.

Restroom

Launch

Signage

Windsock

Emergency Landing

Upgrade Drive

Foot Path

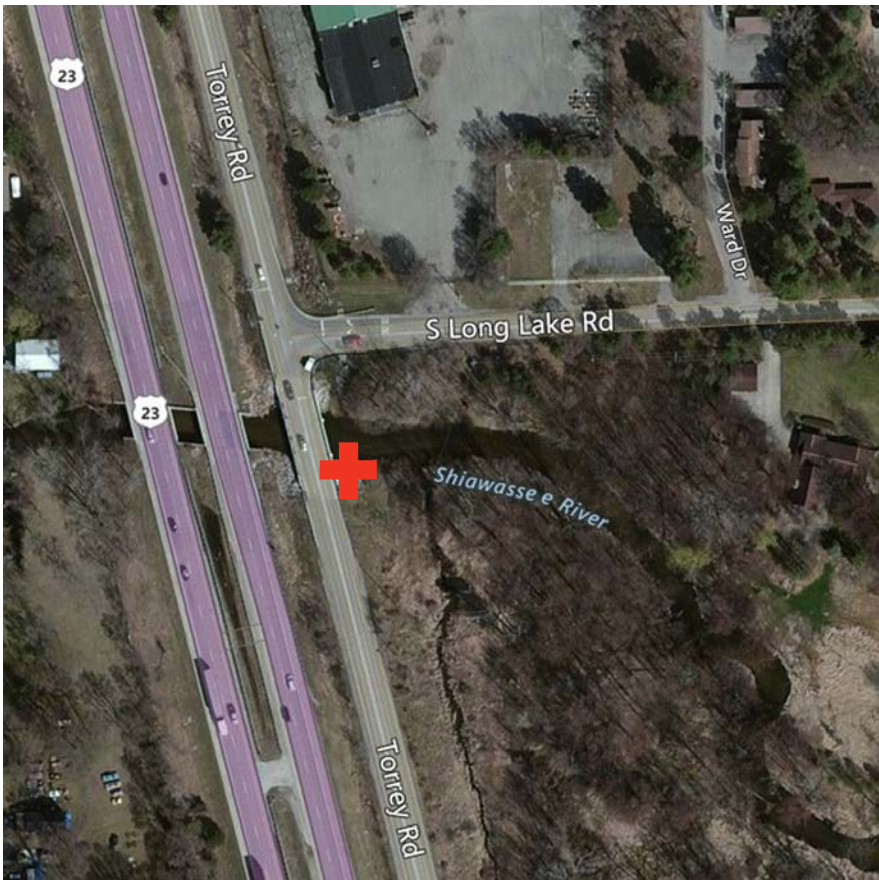
Parallel Parking

Parking Lot

Turn Around

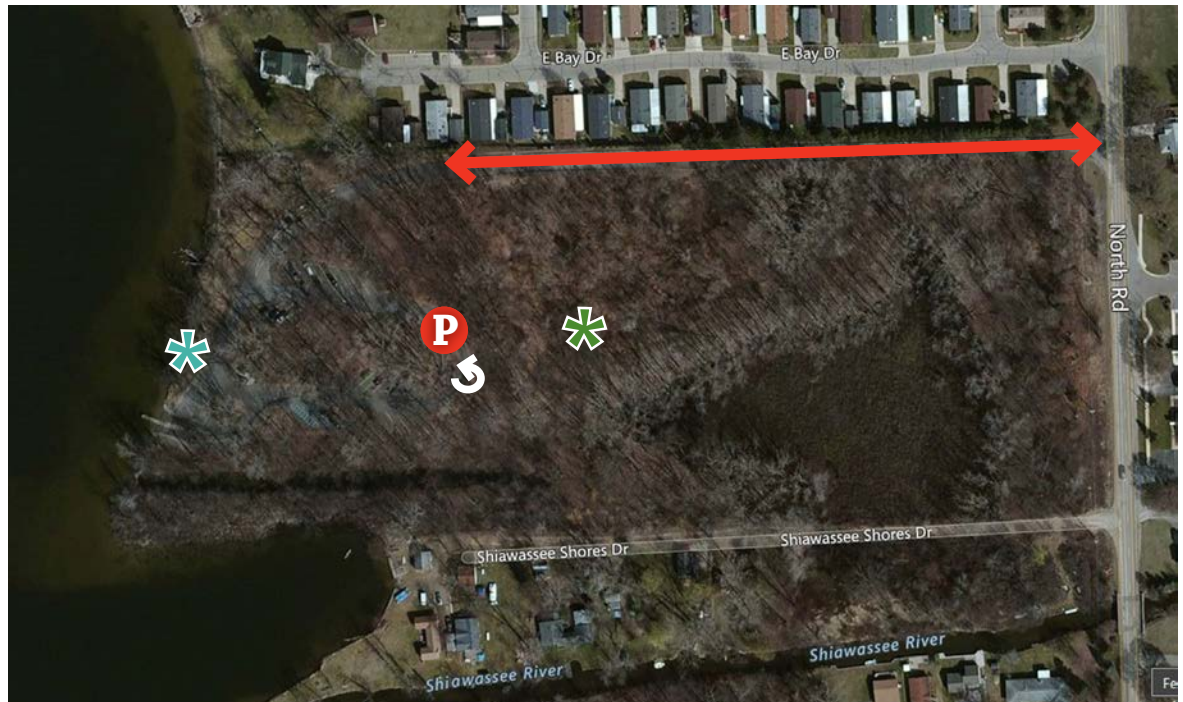
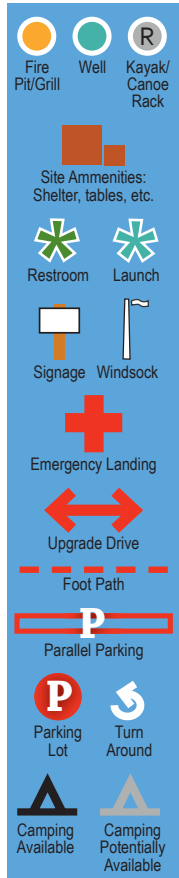
Camping Available

Camping Potentially Available



Shiawassee River Water Trail Development Plan

Site 7 - Lake Ponemah



Vehicle access via Eastview Drive off of North Road

Site managed by the Department of Natural Resources

Concrete boat launch, public restrooms

Lat: 42.8154 Long: -83.7616

Parking: Paved area with parking for 35 vehicles with trailers

Signage at entrance to Lake Ponemah is needed to identify DNR launch and counter-clockwise boat traffic, paddlers cannot see river from the boat launch, must turn right and go around a forested peninsula to find

Launch site is cement and gravel on sides, waves are a small inconvenience when entering and exiting the water.

Parking fees apply if leaving a vehicle at this location, or a recreation passport

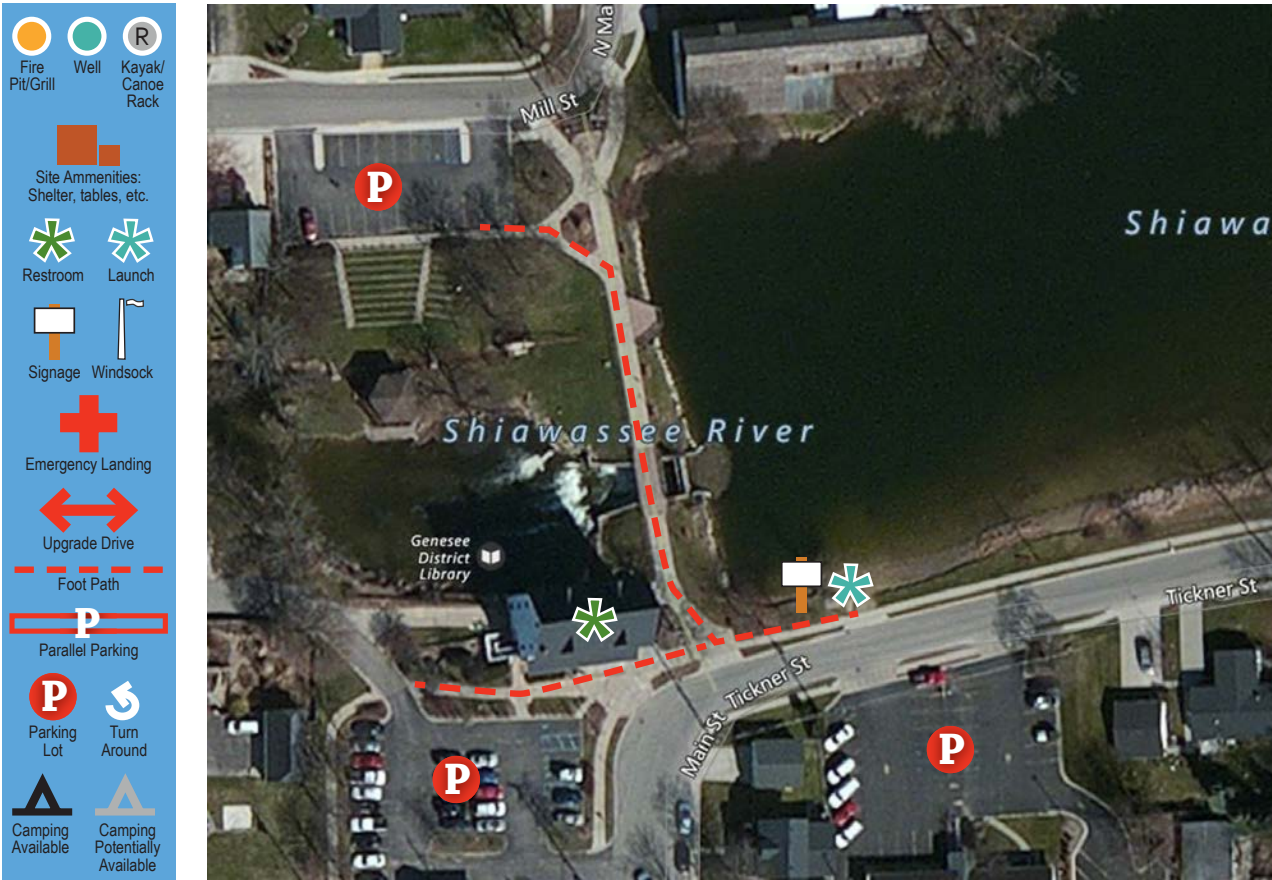
Site 7 - Lake Ponemah



AMENITIES

DNR boat launch

Site 8 - Linden Mill Pond (Portage Required)



Description: Linden Mill Park and Dam is a quaint Trail Town downstream of Fenton, and is the second portage site at 12.89 river miles. The park includes several historic buildings as well as picnic areas, and is close to town amenities including public bathrooms, restaurants, and ample parking.

Potential Improvements: Develop ADA accessible boat launch. Market as a “play boat” site for white water paddlers, include a boat slide. Improve lighting.

Site 8 - Linden Mill Pond (Portage Required)



FEATURES Old mill and dam



FEATURES Park and picnic areas

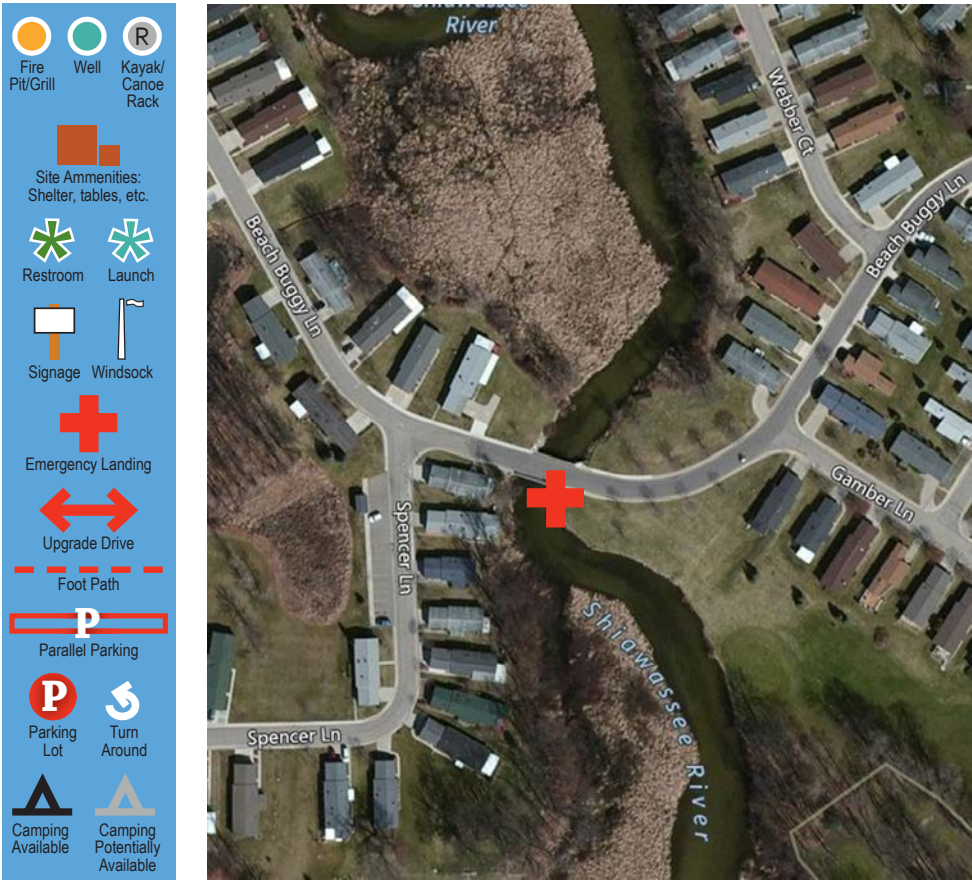


LAUNCH Rock embankment (1-2 feet)



SIGNAGE Heritage Signage

Site 8.1 - Beach Buggy Emergency Access



Potential Site (B) - Bridge Street



Description: Located just on the other side of Linden Mill Park and Dam portage, this access site is located off of Bridge Street and a large public commercial parking area. There is a steep bank with built wooden stairs that leads to the river. A walking path near the access site leads to a community park.

Potential Improvements: Develop gravel carry-in launch, create ADA accessible path alongside stairs to river. Mileage wayfinding signage.

Potential Site (B) - Bridge Street



ACCESS

Wooden stairs carry-in



LAUNCH

Natural embankment (<1 ft)



AMENITIES

Ample parking spaces



FEATURES

Mowed trail to public park

Site 10 - Hogan Road



Description: Though unmarked, this is a well-used access site by locals. A sign from the road marks the Shiawassee River, though there is not water trail information from the river. Paddlers enter and exit the river via an undeveloped bank located on a parcel of public property alongside Hogan Road. This is near the Linden Sportsman Club, so paddlers may hear gunshots in this section.

Potential Improvements: Develop gravel carry-in, install roadside kayak/canoe launch signage, improve walking path from the road to the river.

Site 10 - Hogan Road



SIGNAGE

Visible from the road



LAUNCH

Undeveloped carry-in



NATURAL FEATURES

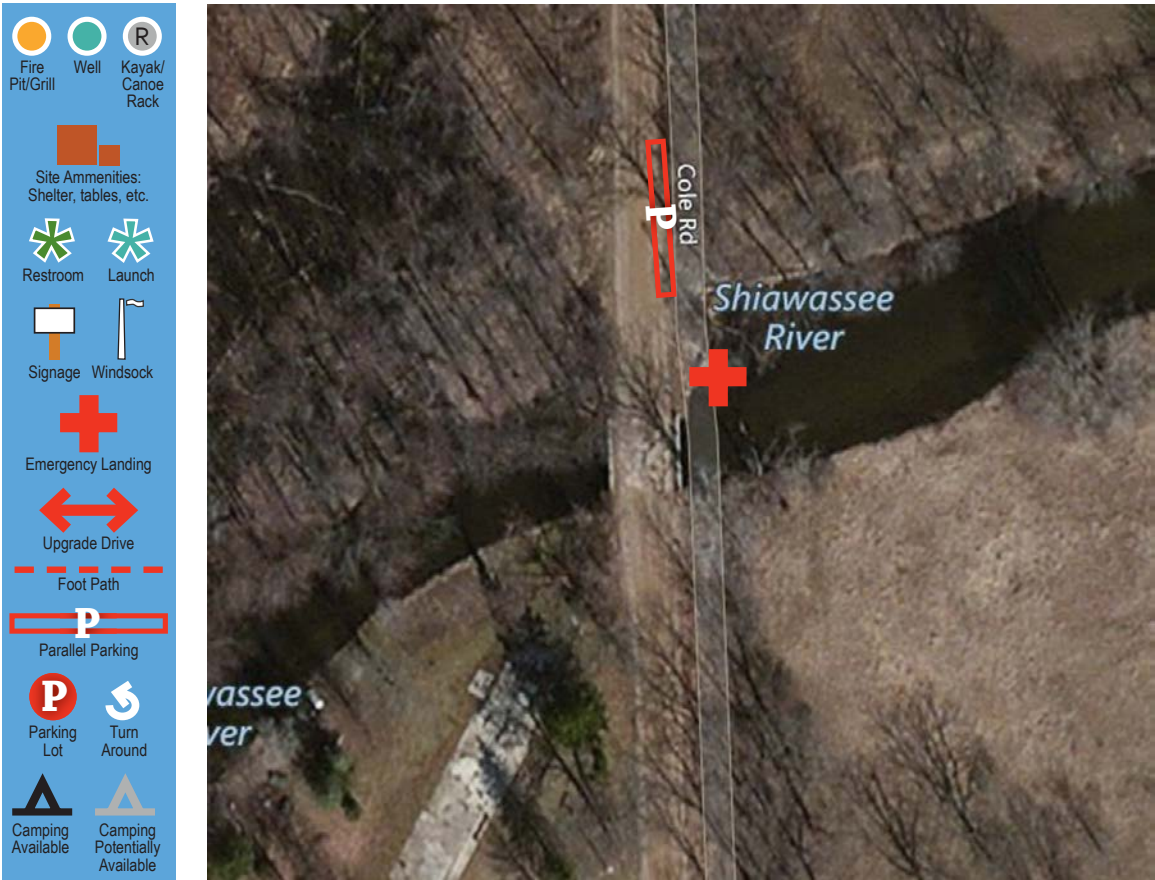
Several downed trees



ACCESS

1 ft. soft shoreline embankment

Potential Site (C) - Cole Road



Description: A newly developed bridge sits across the Shiawassee River at this potential site on Cole Road. Shoulder parking indicates that this is a well-used access site for locals.

Potential Improvements: Develop gravel carry-in, install roadside kayak/canoe launch signage, improve walking path, possibly with railing and steps from the road to the river.

Potential Site (C) - Cole Road



ACCESS

From the road, steep path



LAUNCH

Rock/sand natural embankment



**NATURAL
FEATURES**

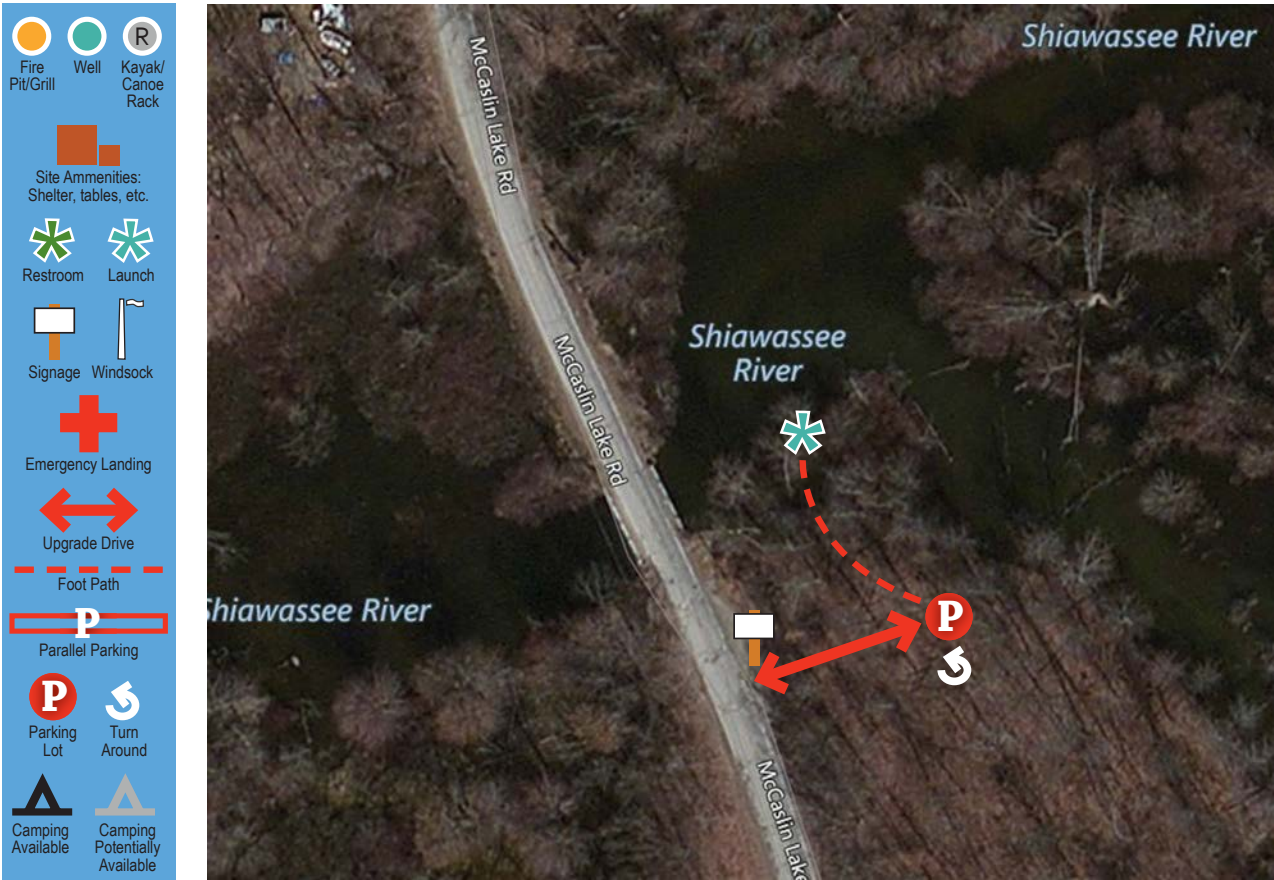
Wetlands, marshes



MARKER

Bridge pass

Site 12 - McCaslin Lake Road



Description: The McCaslin Lake Road access site is a popular spot for fishing and kayaking alike. There is Heritage Water Trail signage near the parking area, and the river is accessed from a well-marked gravel path and gravel carry-in launch. The site is near a commercial area in Linden with restaurants, stores, bathrooms, groceries, and gasoline.

Potential Improvements: Paved ADA accessible path to river. ADA accessible boat launch. Picnic area. Vault toilets. Water refill station. Trash receptacles. Mileage signs at river edge. Multi-use fishing dock/kayak launch.

Site 12 - McCaslin Lake Road



SIGNAGE Heritage Trail signage



ACCESS Gravel trail from parking lot



LAUNCH Gravel carry-in



NATURAL FEATURES Wetlands

Site 13 - Byron Mill Pond

Fire Pit/Grill

Well

Kayak/Canoe Rack

Site Amenities: Shelter, tables, etc.

Restroom

Launch

Signage

Windsock

Emergency Landing

Upgrade Drive

Foot Path

Parallel Parking

Parking Lot

Turn Around

Camping Available

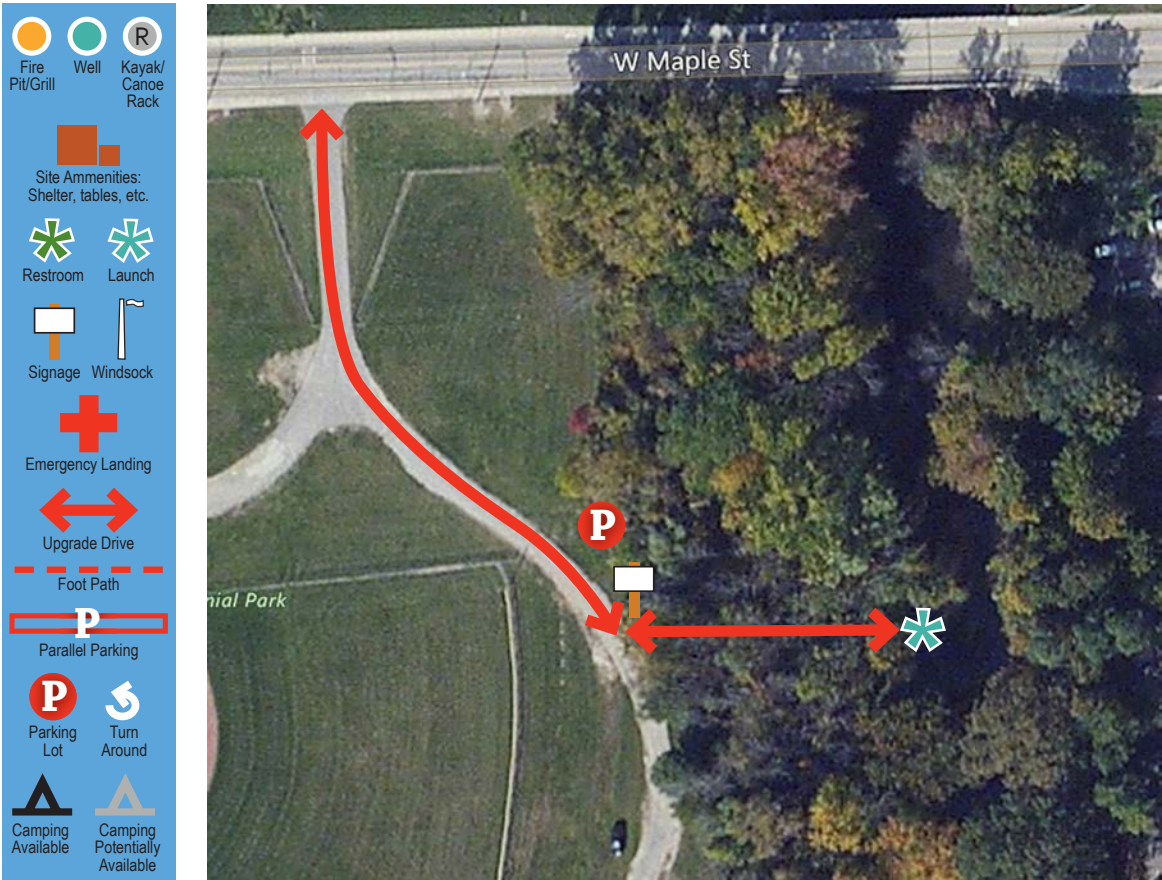
Camping Potentially Available

Description: A makeshift launch site is present at the Byron Cemetary on the north bank of the mill pond before the dam. Parking is available along the cemetary road. No services are available at this site.

Potential Improvements: Developed access site to portage the mill pond dam

34 | Chapter X - Chapter Title

Site 14 - Byron High School Ball Field Launch

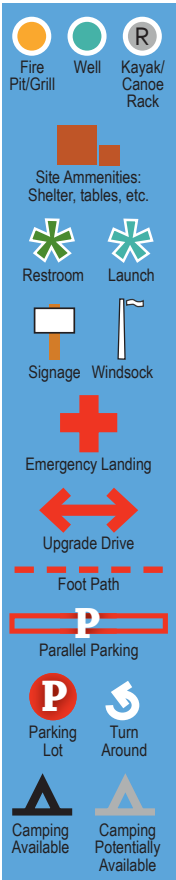


Description: Launch site is on Byron area schools property at the baseball fields. Dirt driveway off of Maple Street has parking for approximately 10 vehicles, narrow dirt path down to river features a carry-in boat launch with concrete pad. Signage is also at the site. Port-a-john available across the street in park.

Site 14 - Byron High School Ball Field Launch



Site 15 - Walnut Hills Family Campground



Site Description: Walnut Hills is a privately owned family campground open from April 29 through October 2. The campground offers a variety of camping experiences and has a separate pond for swimming.

A canoe livery is also at this site, Cheff's Canoe Livery. Paddlers are charged a small parking fee (\$1 in 2016) when using this site.

Site Improvements: None at this time

Site 15 - Walnut Hills Family Campground



LAUNCH



AMENITIES

Canoe rental



AMENITIES

Camp store



NOTE

Registration required for parking

Site 16 - Geeck Road County Park

Fire Pit/Grill

Well

Kayak/Canoe Rack

Site Amenities: Shelter, tables, etc.

Restroom

Launch

Signage

Windsock

Emergency Landing

Upgrade Drive

Foot Path

Parallel Parking

Parking Lot

Turn Around

Camping Available

Camping Potentially Available

Description: Geeck Road County Park features a very accessible developed carry-in launch, and is easily viewed from the road and river. Includes port-a-john, picnic area and parking.

Potential Improvements: Erosion control, ADA compliance with paved path to river, vegetative shoreline buffer, Heritage Water Trail signage.

40 | Chapter X - Chapter Title

Site 16 - Geeck Road County Park



LAUNCH

Developed plank carry-in



ACCESS

Within the county park



NATURAL
FEATURES

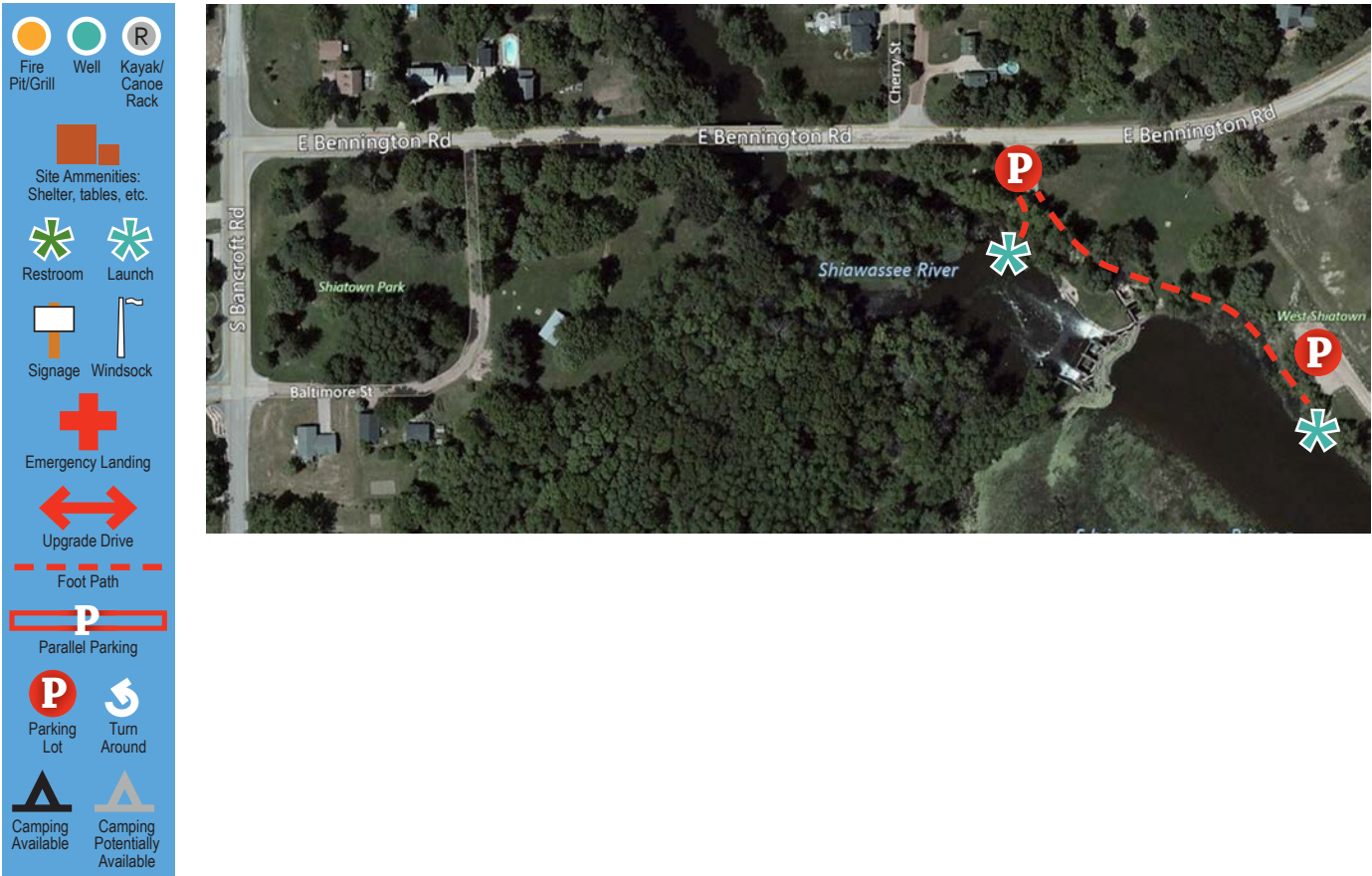
Developed plank



AMENITIES

Playground, benches

Site 17 - Shiatown County Park West



Description: Shiatown County Park features a rustic walking path to the river, with a natural undeveloped carry in boat launch roughly ¼ mile from the nearest parking lot. The launch and river are not visible from the parking lot. Shiatown East features a more visible and accessible carry-in boat launch. Site offers fishing, picnic area and parking.

Potential Improvements: Wayfinding signage, improved walking paths to the river, erosion control on the banks.

Site 17 - Shiatown County Park West



LAUNCH

Undeveloped carry-in



ACCESS

Footbridge from park



AMENITIES

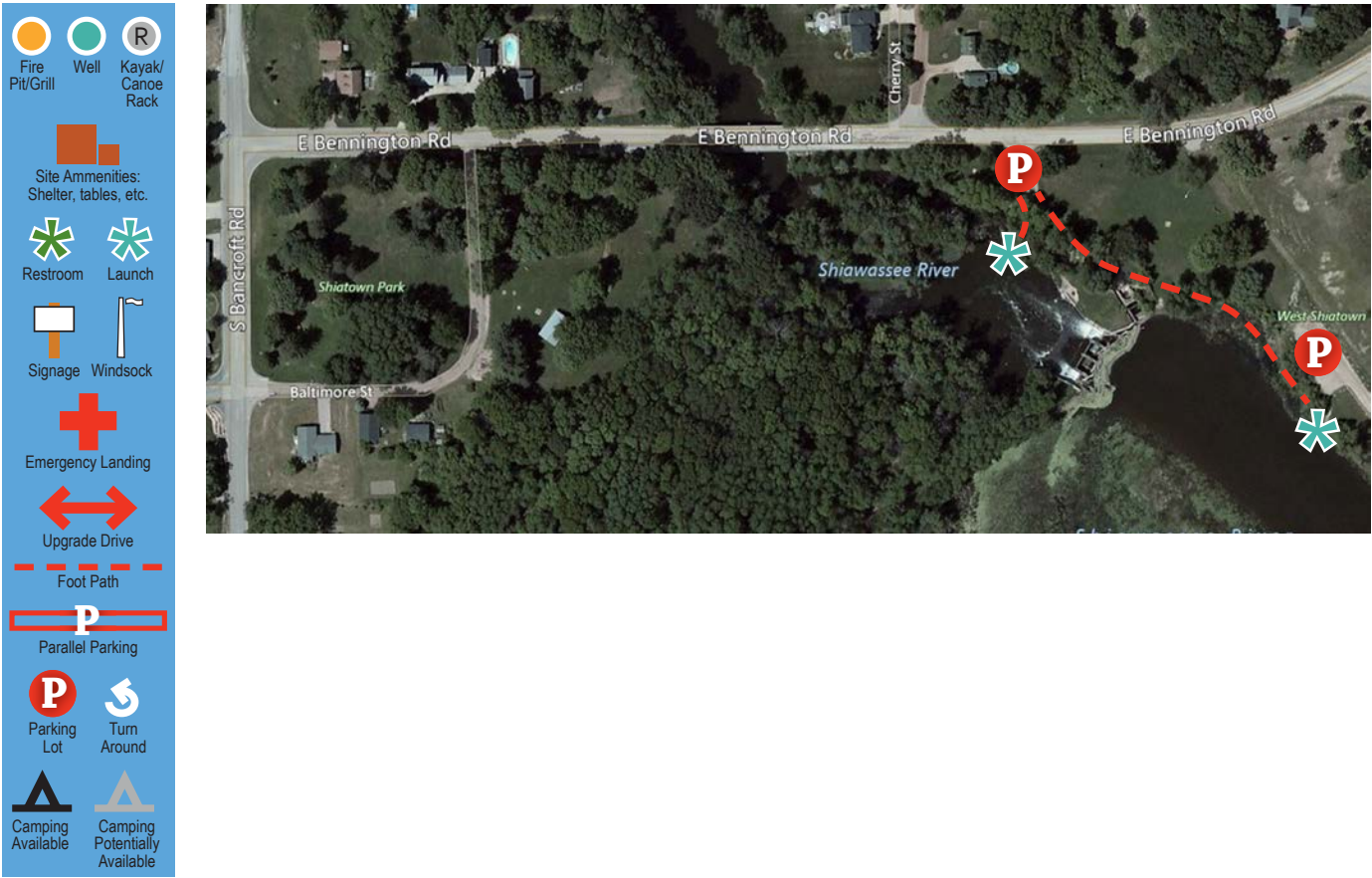
Park and picnic areas



ACCESS

Natural path from park

Site 17 - Shiatown County Park East



Description: Shiatown County Park features a rustic walking path to the river, with a natural undeveloped carry in boat launch roughly ¼ mile from the nearest parking lot. The launch and river are not visible from the parking lot. Shiatown East features a more visible and accessible carry-in boat launch. Site offers fishing, picnic area and parking.

Potential Improvements: Wayfinding signage, improved walking paths to the river, erosion control on the banks.

Site 17 - Shiatown County Park East



SIGNAGE County park signage



LAUNCH Undeveloped carry-in



ACCESS Direct to parking lot



ENVIRONMENTAL Shoreline erosion

Site 18 - Lytle Road County Park

Fire Pit/Grill

Well

Kayak/Canoe Rack

Site Amenities: Shelter, tables, etc.

Restroom

Launch

Signage

Windsock

Emergency Landing

Upgrade Drive

Foot Path

Parallel Parking

Parking Lot

Turn Around

Camping Available

Camping Potentially Available

Description: Lytle Road features a developed carry-in that is easily accessed from the road via a gravel two track and pull off. Canoe/kayak signage alerts drivers to the launch.

Potential Improvements: No improvements needed.

46 | Chapter X - Chapter Title

Site 18 - Lytle Road County Park



SIGNAGE

Canoe/kayak launch



LAUNCH

Developed carry-in



**NATURAL
FEATURES**

Shallow, gentle segment of river



ACCESS

Gravel two-track, roadside pull off

Portage: Brick Plant Causeway

Fire Pit/Grill

Well

Kayak/Canoe Rack

Site Amenities: Shelter, tables, etc.

Restroom

Launch

Signage

Windsock

Emergency Landing

Upgrade Drive

Foot Path

Parallel Parking

Parking Lot

Turn Around

Camping Available

Camping Potentially Available

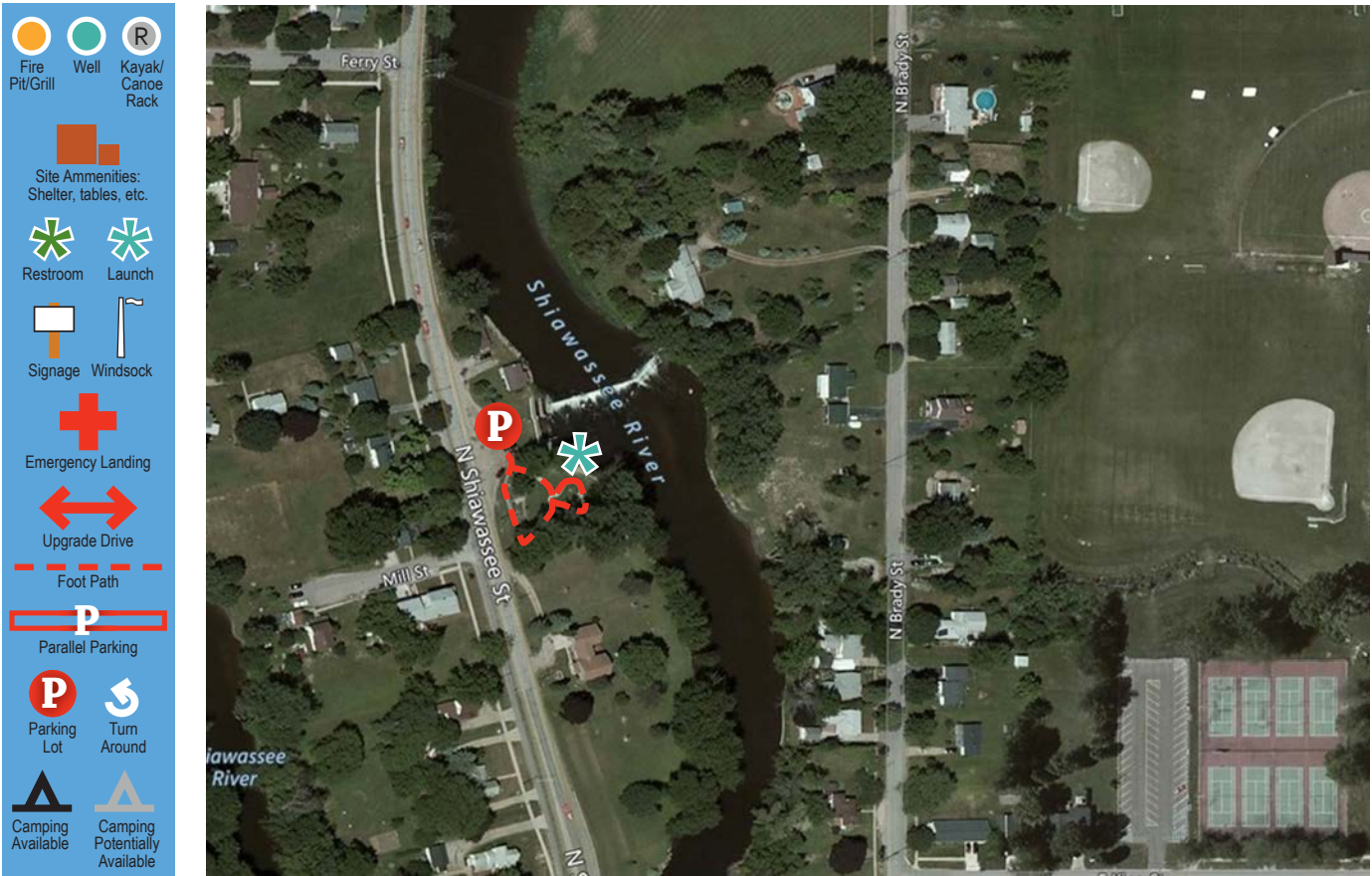
Portage Route

Site Description: Privately owned causeway can be paddled under during low water on left side, must portage over during high water.

Improvements: Signage upstream to alert paddlers.

48 | Chapter X - Chapter Title

Site 19 - Brady Street Portage (Barrier Free in August 2017) “Heritage Park”



Description: Brady Street portage lies along a well developed community park, and a wide segment of the river with some riffles and currents. Paved walking paths and a gravel carry-in launch site make this a very visible and easily accessed site.

Potential Improvements: Heritage Water Trail signage, public restrooms and potable water source (possibly already exists?)

Site 19 - Brady Street Portage (Barrier Free in August 2017) “Heritage Park”



LAUNCH Gravel carry-in



ACCESS Paved walking paths within park

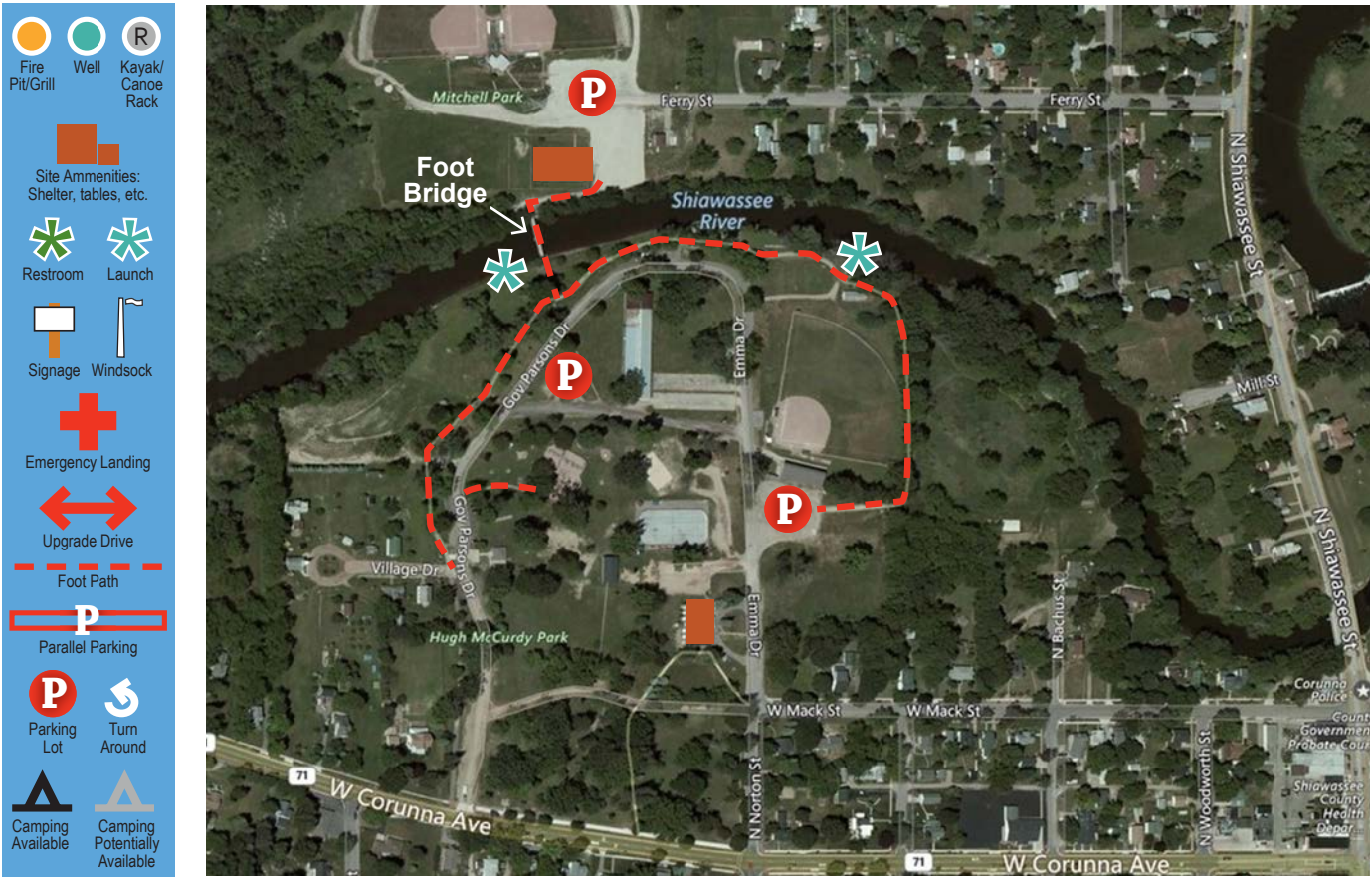


AMENITIES Picnic area, walking paths



FEATURES Industrial dam, portage required until August 2017

Site 20 - Corunna McCurdy Park



Description: McCurdy Park has suitable parking for 100+ vehicles. It is a large park with many user groups and amenities. Amenities include a footbridge, softball complex, totlot/fountain, pavilion and restrooms, waste station water hose, gazebos, bunk house, concession stand / warming hut, grandstand, drinking fountain, community center, veterans memorial, playscape, horse shoe pits, museum, and historical village.

Camping is permitted at this site. The James S. Miner bicycle path also travels through the park

Proposed Improvements: according to the park master plan, the city would like to add signage, potable water, campground, extend bicycle path, add a canoe launch and several other amenities.

Site 20 - Corunna McCurdy Park



ACCESS

Foot bridge



LAUNCH

Rustic launch



AMENITIES

Picnic and play area



AMENITIES

James Miner trail

Site 21 - Oakwood Ave Landing / Voight Loop Park

Fire Pit/Grill

Well

Kayak/Canoe Rack

Site Amenities: Shelter, tables, etc.

Restroom

Launch

Signage

Windsock

Emergency Landing

Upgrade Drive

Foot Path

Parallel Parking

Parking Lot

Turn Around

Camping Available

Camping Potentially Available

Description: The Oakwood Landing at Kiwanis Park is adjacent to the Voight Park Loop and is easily accessed via a gravel pathway and gravel developed carry-in. Canoe and kayak launch signage alerts vehicles to the site, and an in water sign alerts boaters to the site. Park connected to James S Miner Trail. Has port-a-john.

54 | Chapter X - Chapter Title

Site 21 - Oakwood Ave Landing / Voight Loop Park



SIGNAGE Public access

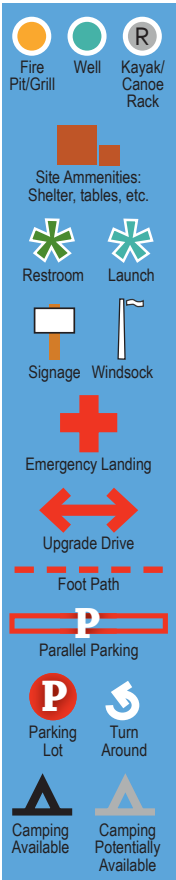


ACCESS Gravel pathway



LAUNCH Gravel carry-in

Site 22 - Owosso Middle School/ Curwood Castle Park



Description: Curwood Castle Park lies across the river from Owosso Middle School, and features a paved riverwalk path as well as a stair step kayak and canoe emergency exit. This site doesn't necessarily require portage, but does require boat handling skills as there is a small dam drop off, and the emergency exit site is located within a walled area along the bank.

Owosso Middle School has an unimproved carry in launch that is available for boaters to use.

Potential Improvements: Developed canoe/kayak launch, wayfinding signage, Heritage Water Trail Signage

Site 22 - Owosso Middle School/ Curwood Castle Park



ACCESS Community park and walkway



LAUNCH Carry-in steps

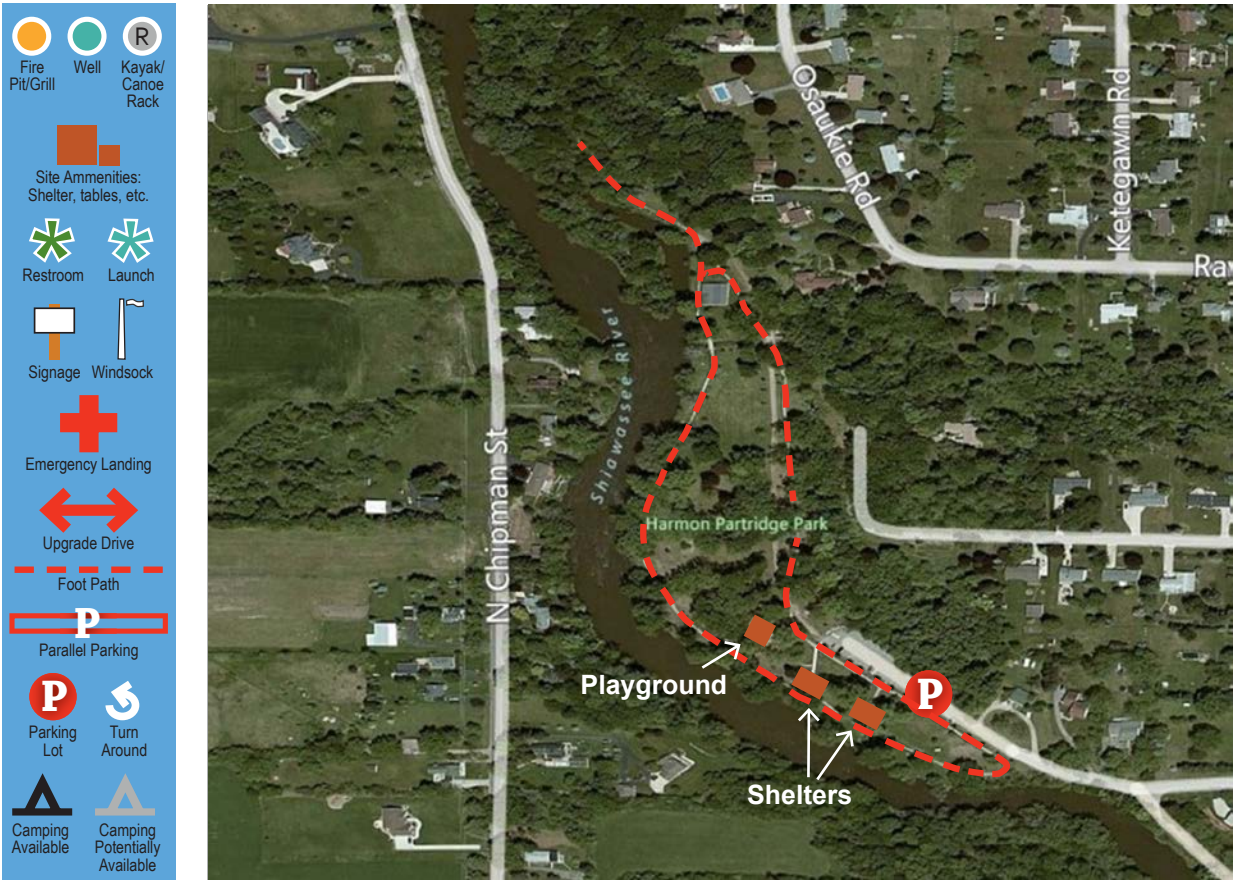


FEATURES Riffles, currents and dam. Portage.



FEATURES High banks, park amenities

Site 23 - Harmon Partridge Park



Description: Harmon Partridge Park is a large public space with 1,800 feet of river frontage. There is a walking loop path and two parking areas, along with several park amenities. There is no designated canoe or kayak launch.

Upstream of the park, near VG's is a developed launch built for canoes, features a stepped approach to the river, no services available at this location

Potential Improvements: Carry-in canoe and kayak launch, wayfinding signage.



Site 23.1 - 1/4 mile upstream of Harmon Partridge Park

Site 23 - Harmon Partridge Park



LAUNCH	No visible launch
---------------	-------------------



AMENITIES	Picnic areas and playground
------------------	-----------------------------