



Solar Washington

Jake Wade

Net Metering Program Manager

January 14, 2013



PUGET SOUND ENERGY

The Energy To Do Great Things

Puget Sound Energy - Overview



Service Area - 6,000+ square miles in 11 Counties

Electric - Customers 1.05 million

Natural gas - Customers 725,000

PSE-Owned Utility Scale Wind Projects



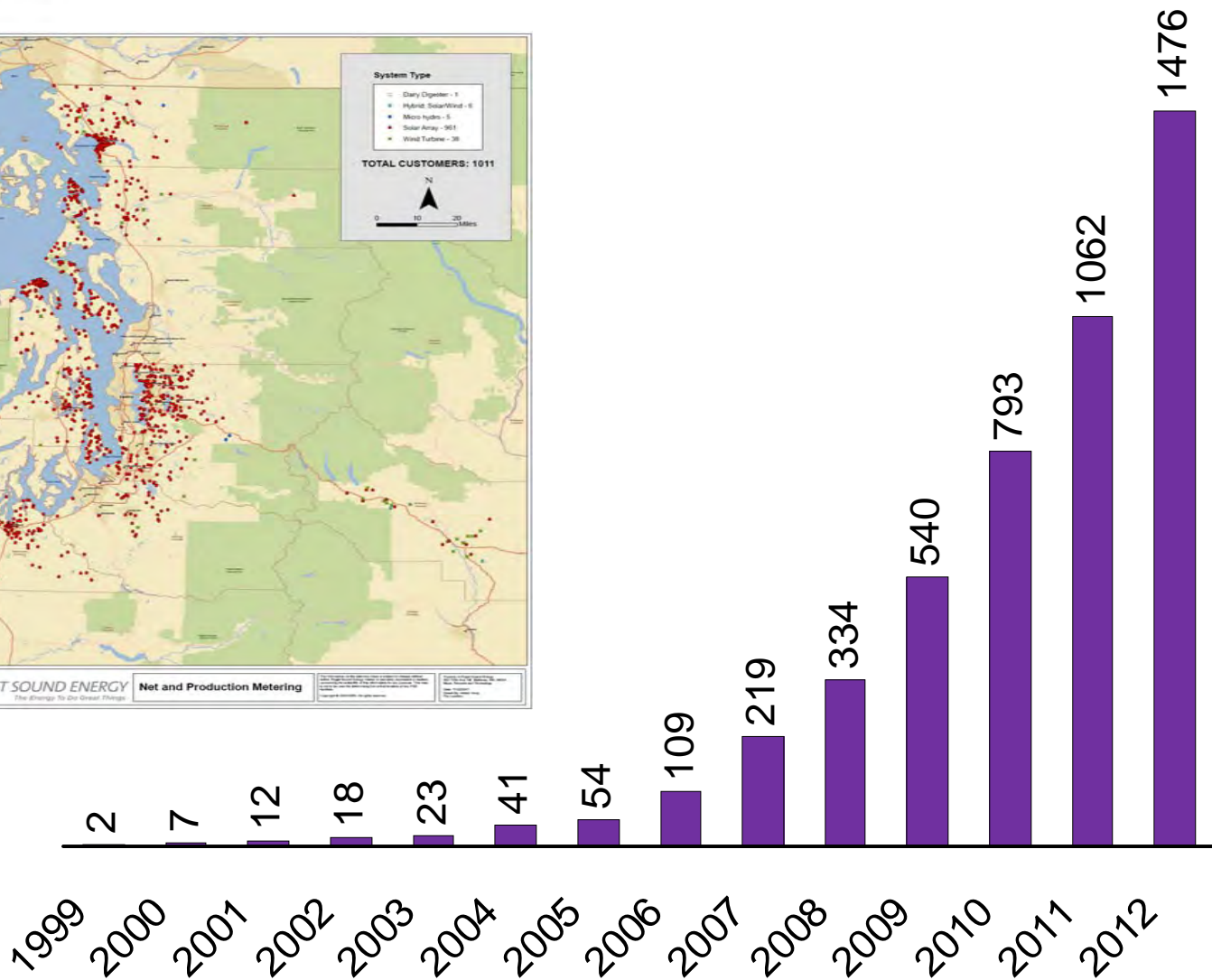
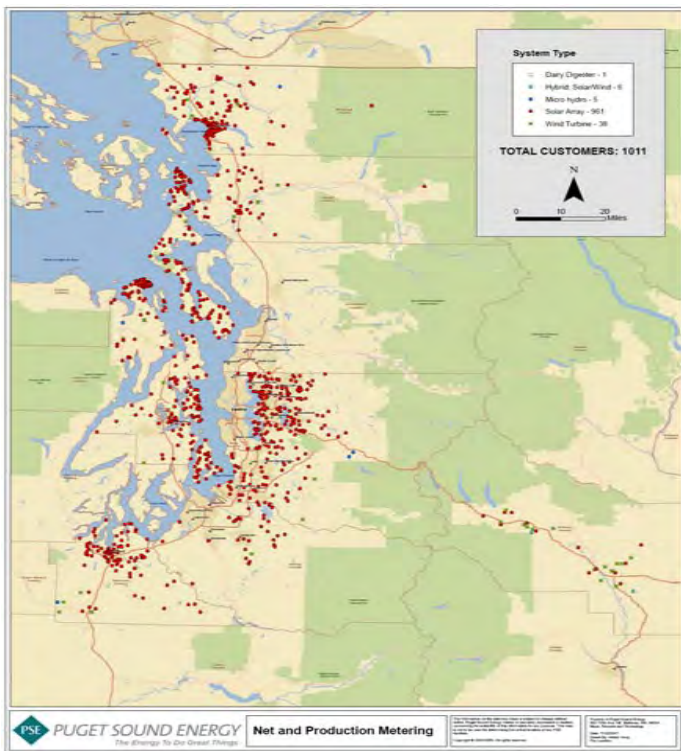
Wild Horse: 229 MW

Hopkins Ridge: 150 MW



Lower Snake River: 343 MW

Net Metering Growth



2012

- Production Incentive: \$1,106,000 (100% paid)
- 1476 Net Metered Customers
- 7.77 MW Capacity

2011

- Production Incentive: \$545,000
- 1062 Net Metered Customers
- 5.09 MW Capacity

2010

- Production Incentive: \$283,000
- Production Meter Rebate: \$43,000
- 793 Net Metered Customers
- 3.38 MW Capacity

2009

- Production Incentive: \$170,000
- Production Meter Rebate: \$37,000
- 540 Net Metered Customers
- 2.07 MW Capacity

2005 – 2007

- PSE Solar Rebate: Over \$300,000

Community Solar:

	<u>Number</u>	<u>Generation capacity (kW):</u>	<u>Production incentive/kWh:</u>	<u>Potential Payout per year:</u>
Installed:				
LLC - Company Owned	8	366.27	\$1.08	\$395,571.16
Standard	1	71.3	\$1.08	\$77,004.00
Install in process:				
LLC - Company Owned	3	215	\$1.08	\$232,240.00



Customers generators:

4.5 Million kWh produced in 2011-2012

Or

1800 Tons of CO₂. (3,600,000 lbs)

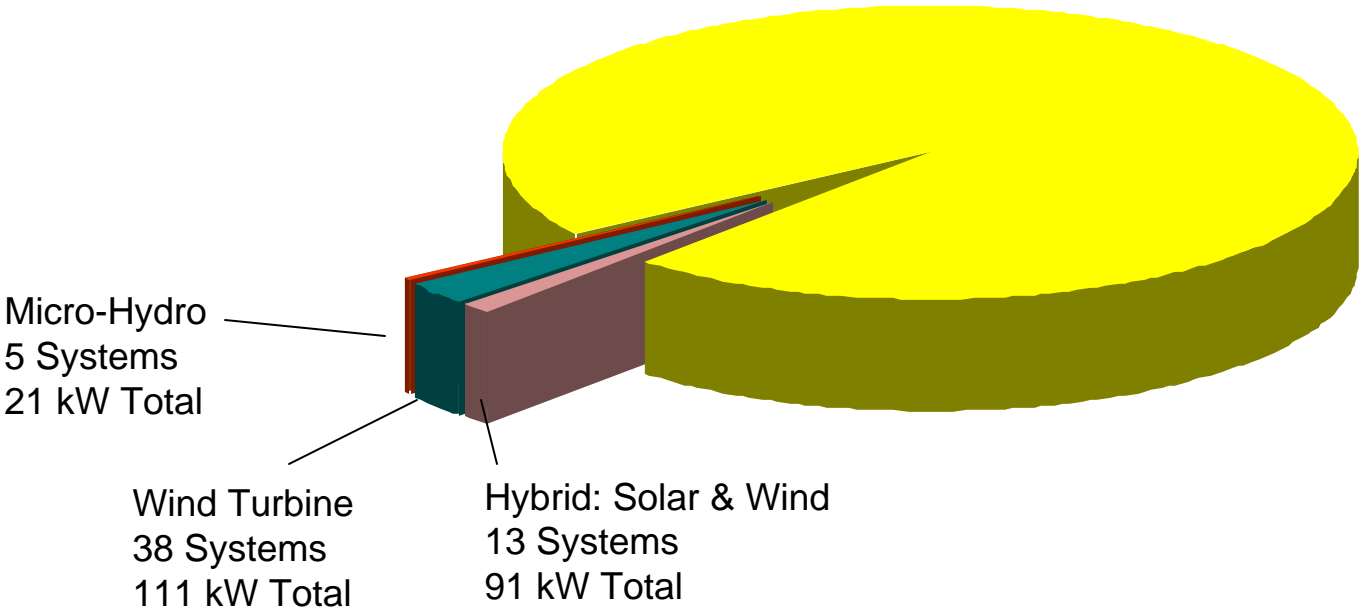
PSE “Turn Time” on orders 2012:

5.2 Days

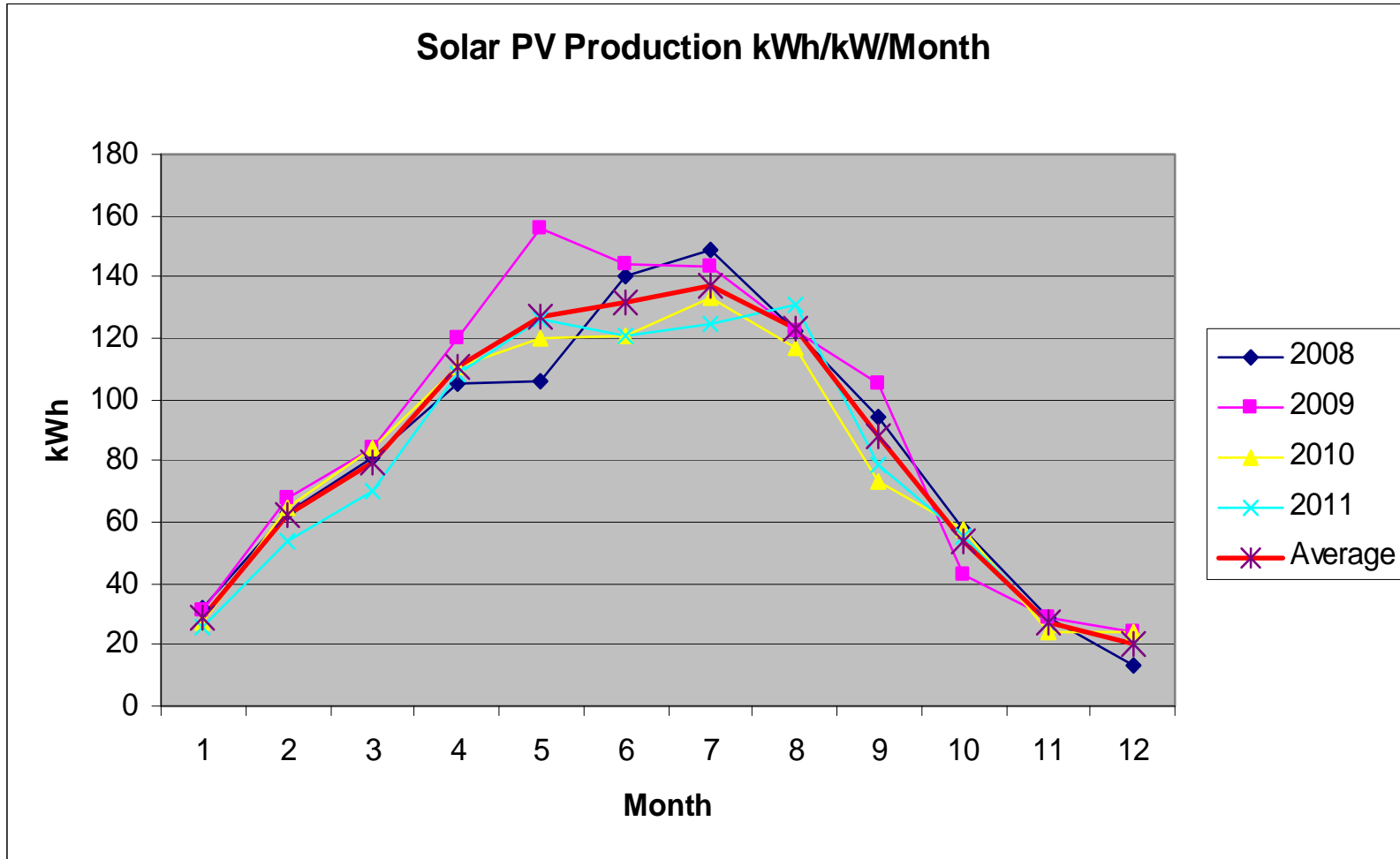
Customer Resources



Solar PV
1420 Systems
7551 kW Total

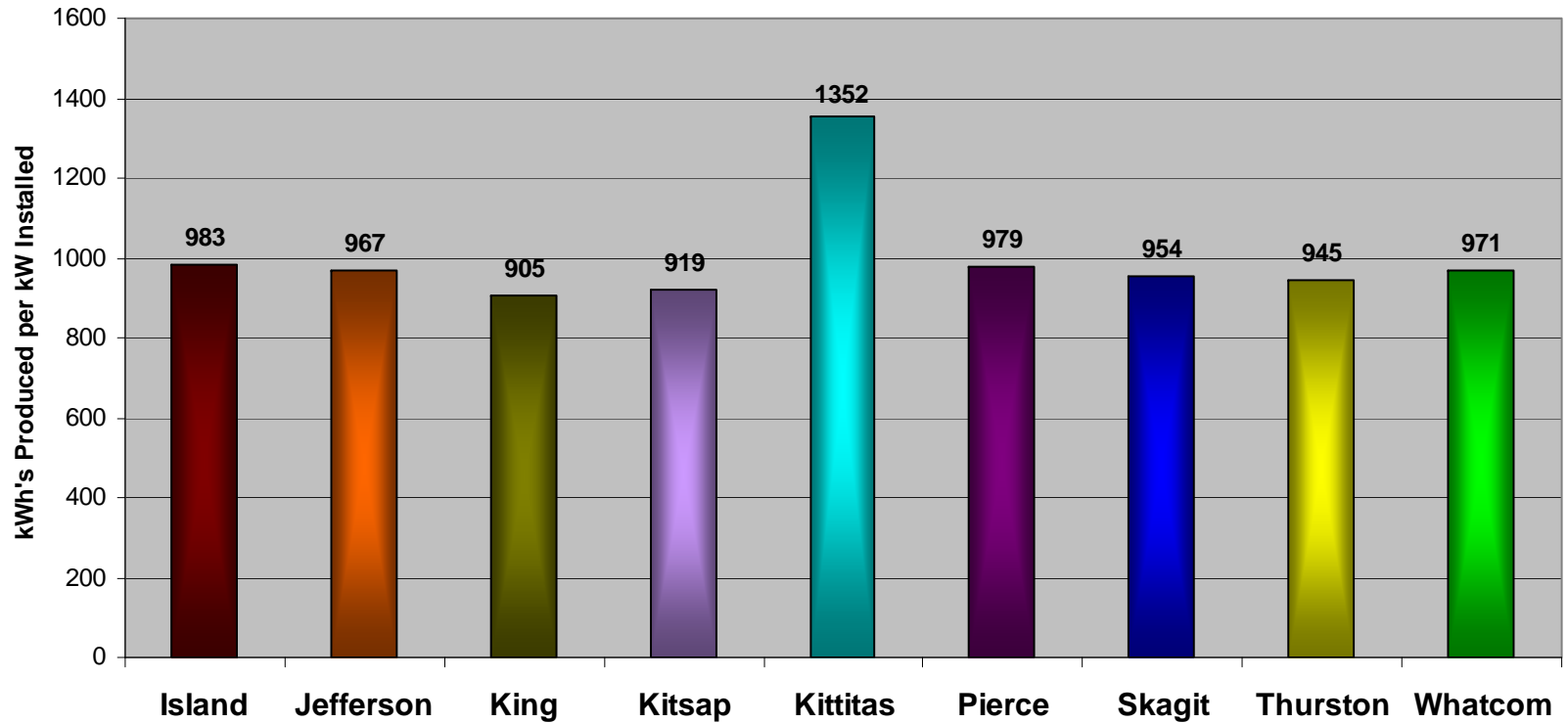


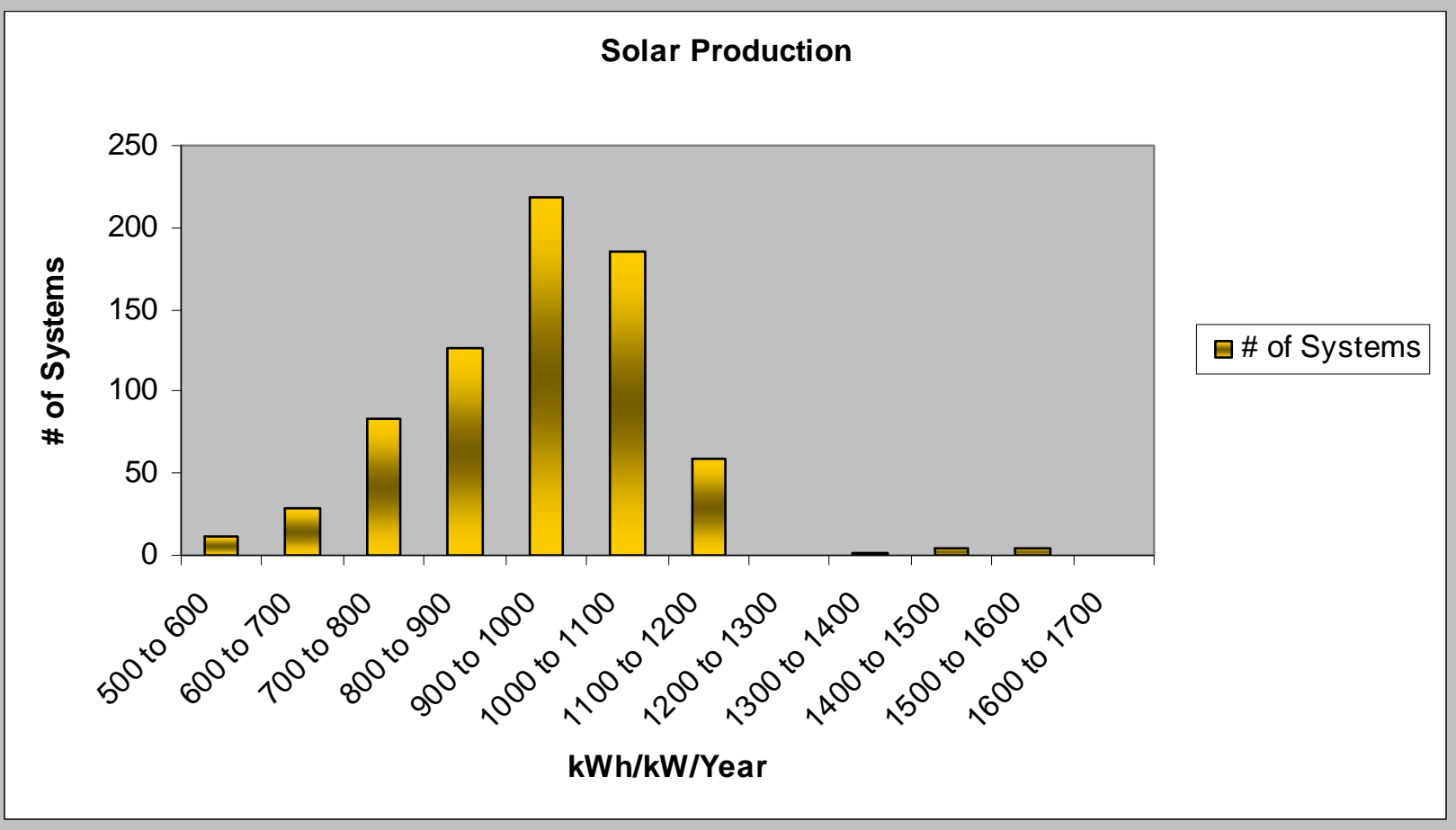
PSE Total (12/31/2012): 1476 Systems, 7.77 MW Total Nameplate Capacity



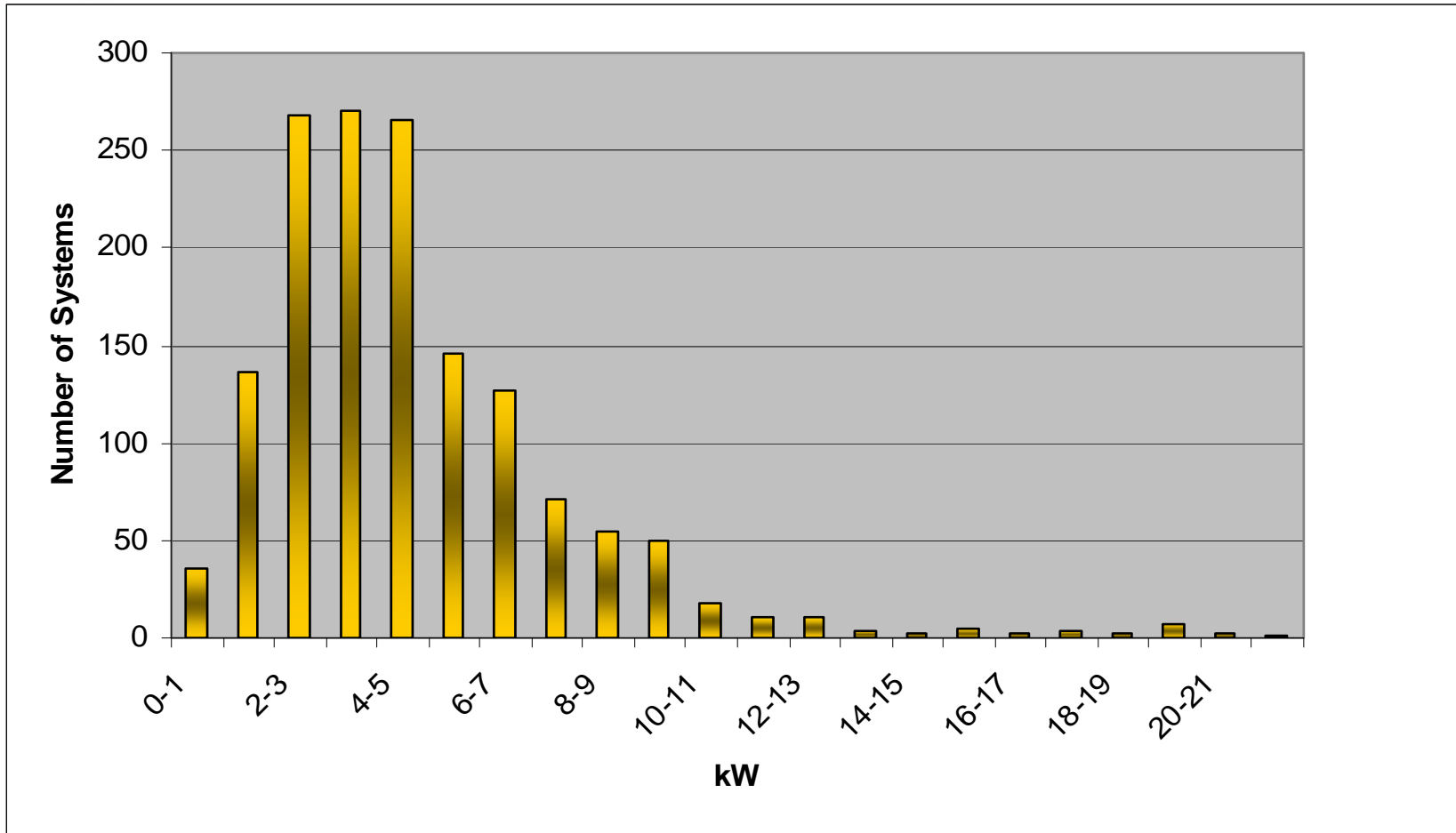
2011-2012 Average Solar Production by County

Total Average: 945 kWh/kW/Year

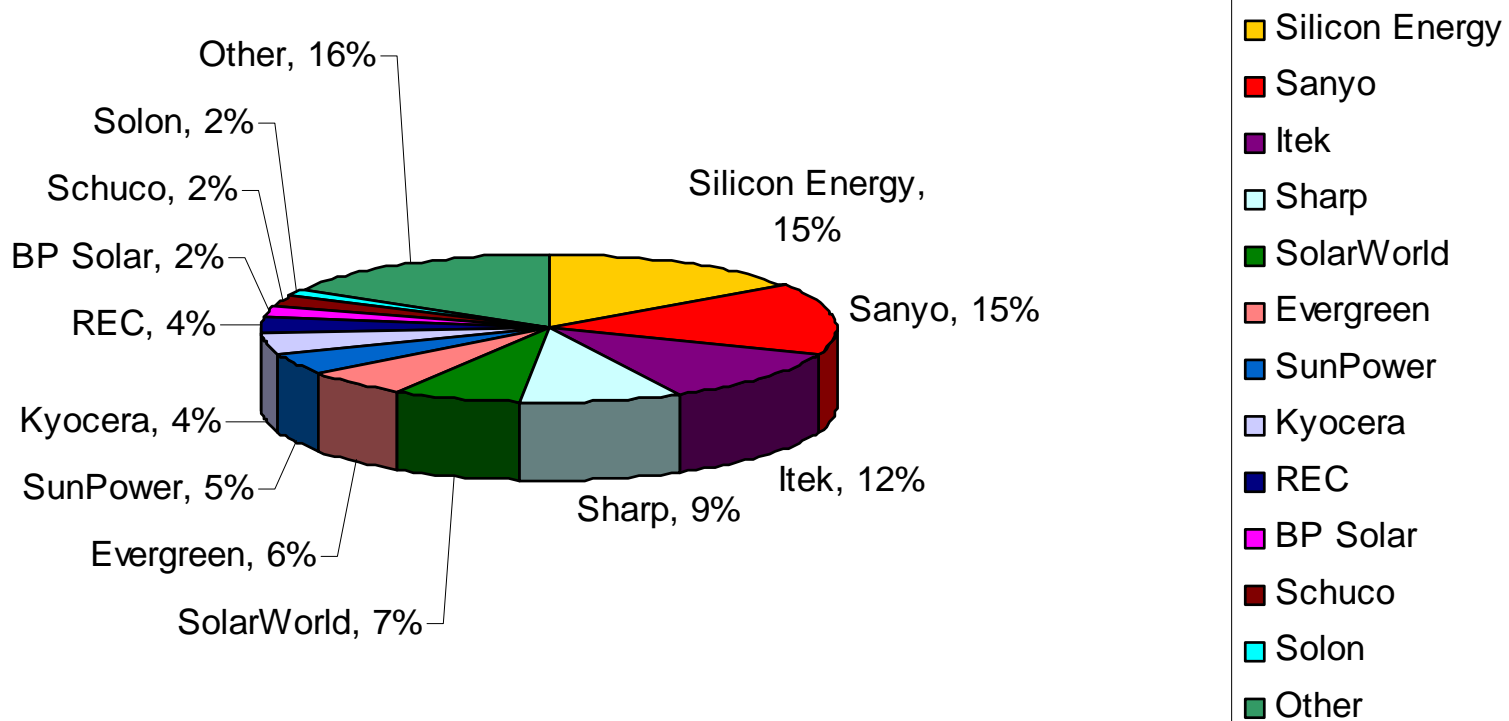


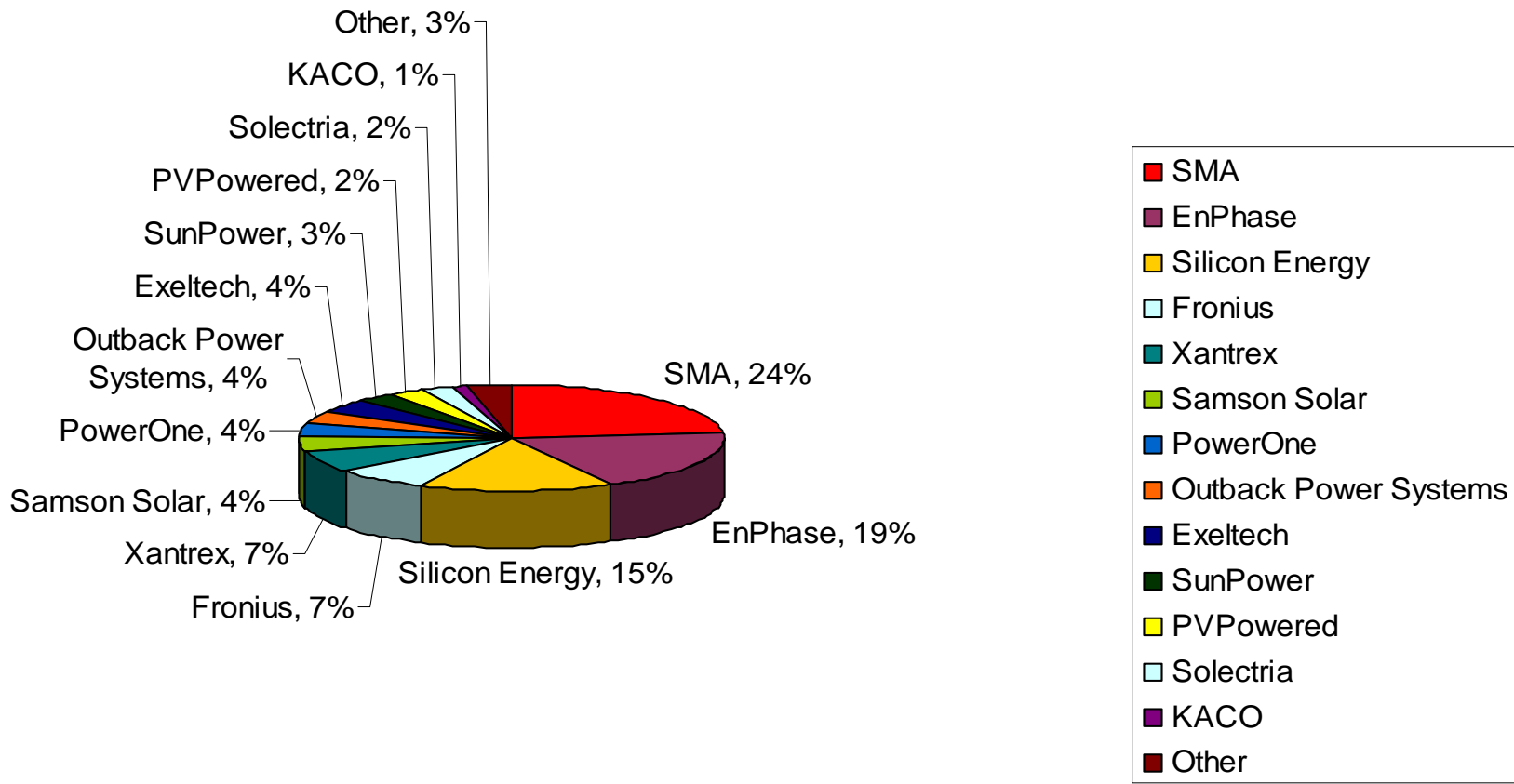


#s by System Size



Mean = 5.3 kW Median = 4.2 kW Mode = 4.3 kW





69 Customers (5%)

Production: 792 kWh/kW/Year

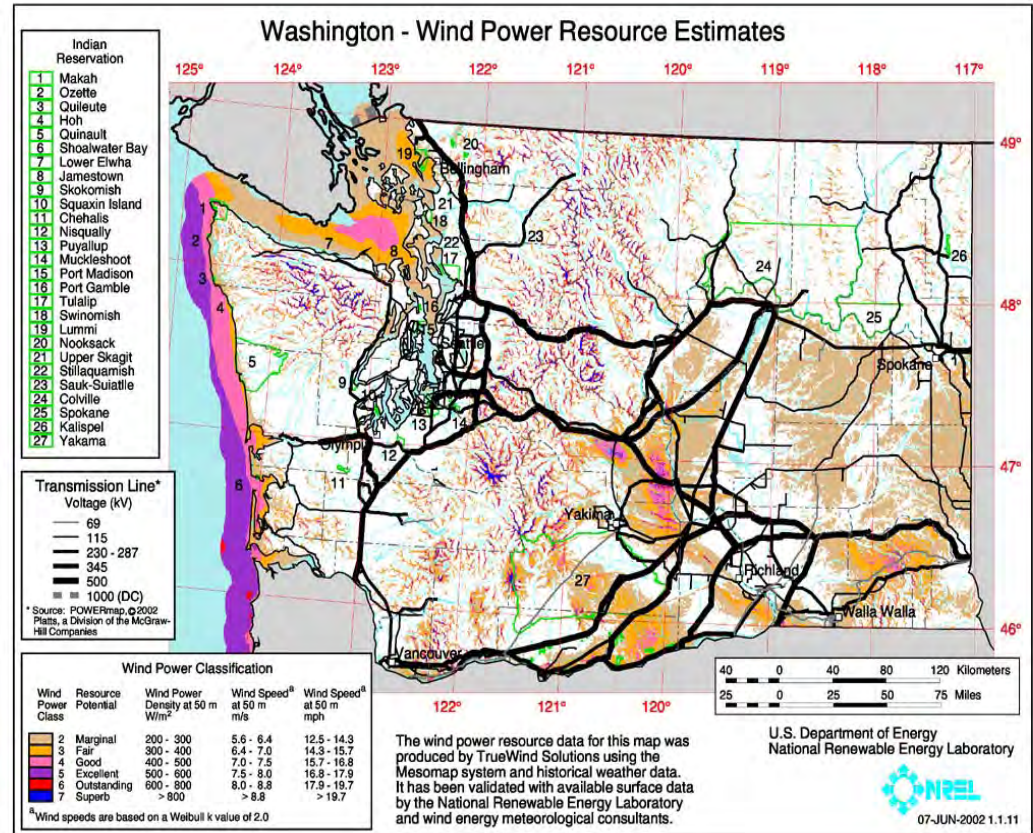
84% compared to systems without batteries

38 Wind Customers (3%)

Production: 473 kWh/kW/Year

The top 5 are on par with solar

The top 9 are all in Kittitas Co.



- Community Solar
- New Forms
- Online Forms
- Spring 2013 – New Billing System
- ESSP – Evergreen State Solar Partnership
- Turn Time
- Contractor Alliance Network
- Reverse Rotation

- 2020 and Beyond



Questions or comments?

Jake Wade

jake.wade@pse.com

425-462-3459

Jennifer Montgomery

jennifer.montgomery@pse.com

425-456-2419