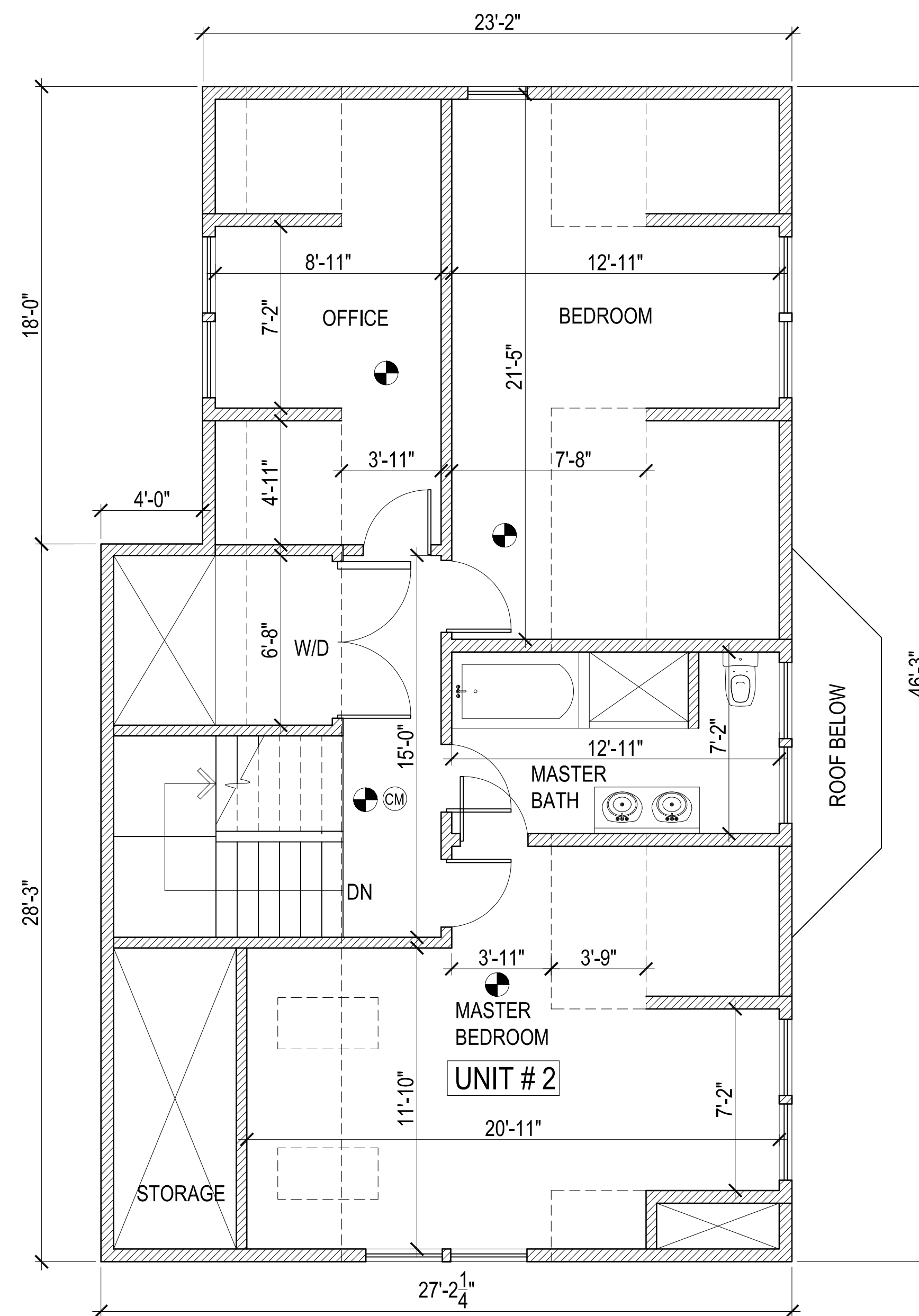
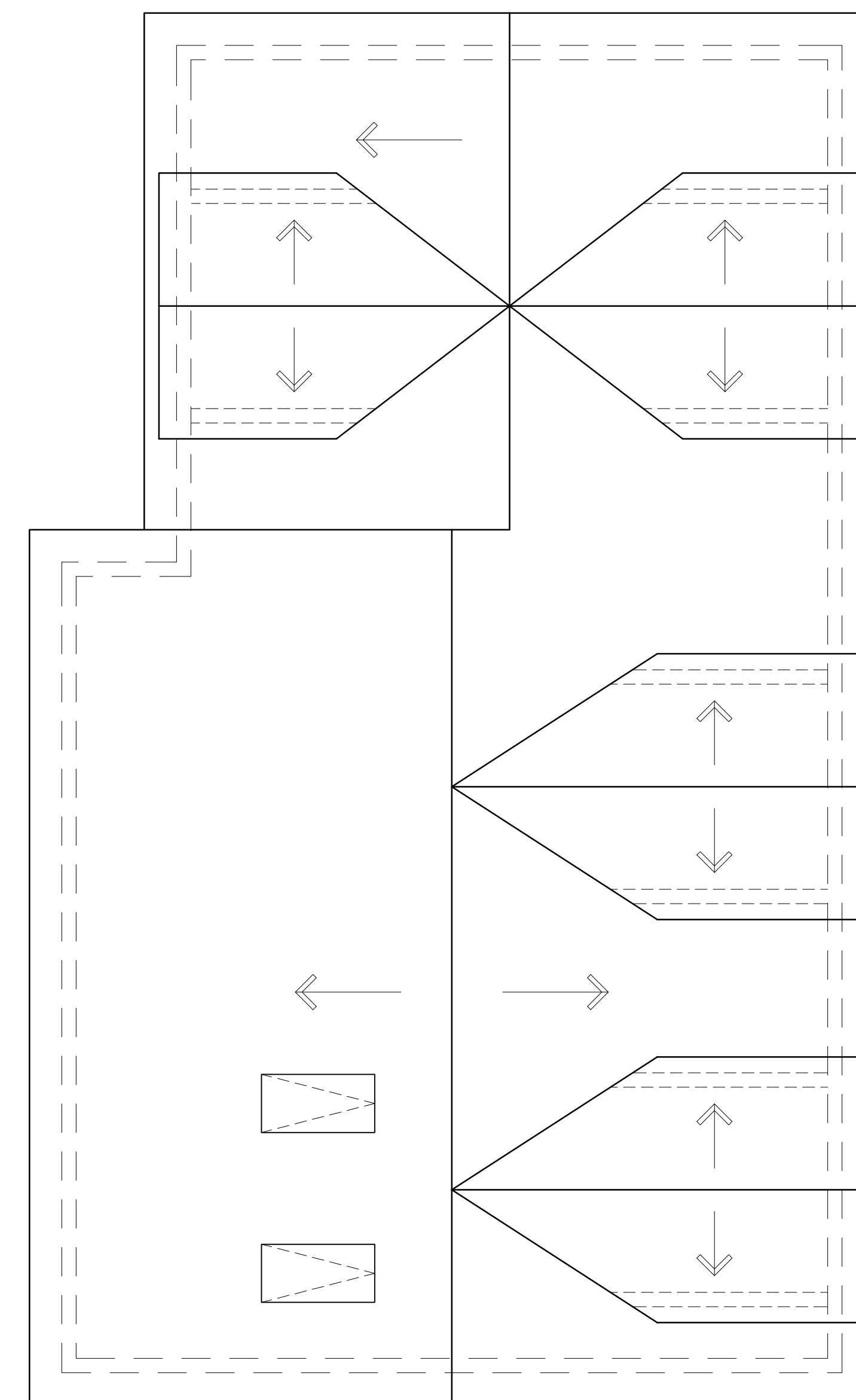


**SECOND FLOOR PLAN**  
UNIT # 2 = 1227 S.F.



**THIRD FLOOR PLAN**  
UNIT # 2 = 850 S.F.



**ROOF PLAN**

UNIT # 1 = 2,161 S.F. TOTAL LIVING AREA  
UNIT # 2 = 2,121 S.F. TOTAL LIVING AREA

**LEGEND**

- EXISTING WALL TO REMAIN
- EXISTING WALL TO BE REMOVED
- PROPOSED WALL
- EXISTING DOOR TO REMAIN
- EXISTING DOOR TO BE REMOVED

- PROPOSED DOOR
- HARDWIRED & INTERCONNECTED SMOKE DETECTOR
- HARDWIRED & INTERCONNECTED HEAT DETECTOR
- HARDWIRED & INTERCONNECTED CARBON MONOXIDE DETECTOR

GENERAL NOTE: 1' 0' 1' 5' 10'

VERIFY AND CONFIRM ALL CONDITIONS AND/OR DIMENSIONS SHOWN PRIOR TO COMMENCING CONSTRUCTION OR ORDERING MATERIALS. NOTIFY ARCHITECT OF ANY INCONSISTENCIES FOR REVIEW AND APPROVAL BEFORE PROCEEDING WITH CONSTRUCTION.