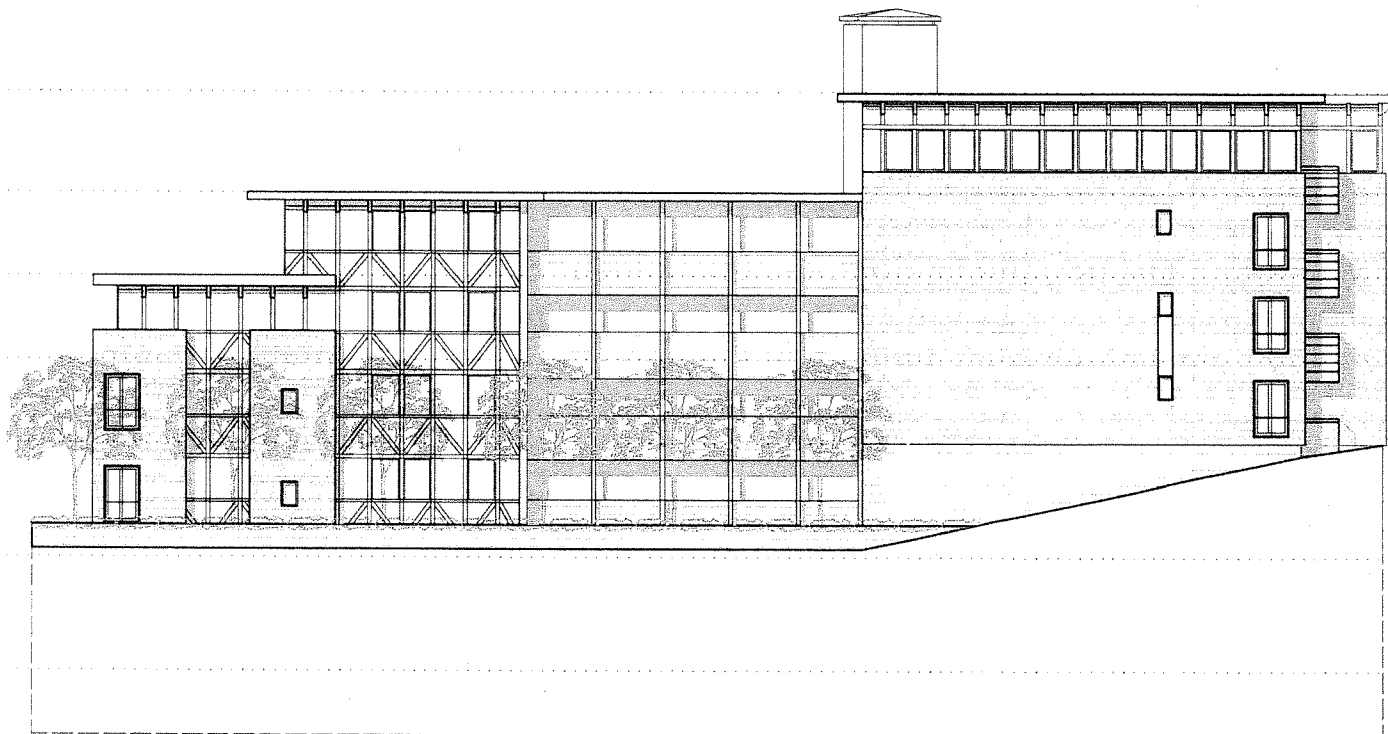


ROOF
 EL. 475.5
 12'-6"
 PENTHOUSE FLOOR
 EL. 463'
 10'-4"
 FOURTH FLOOR
 EL. 452.66'
 10'-4"
 THIRD FLOOR
 EL. 442.33'
 10'-4"
 SECOND FLOOR
 EL. 432'
 14'-0"
 GROUND FLOOR
 EL. 418'
 14'-0"
 BASEMENT
 EL. 405'



1 BUILDING ELEVATION
 3/32" = 1'-0"

ROOF
 EL. 475.5
 12'-6"
 PENTHOUSE FLOOR
 EL. 463'
 10'-4"
 FOURTH FLOOR
 EL. 452.66'
 10'-4"
 THIRD FLOOR
 EL. 442.33'
 10'-4"
 SECOND FLOOR
 EL. 432'
 14'-0"
 GROUND FLOOR
 EL. 418'
 14'-0"
 BASEMENT
 EL. 405'



2 BUILDING ELEVATION
 3/32" = 1'-0"