

Year of Vibrant Green Space Celebration Committee



Year of Vibrant Green Space

Monday, June 19th

AGENDA

- **Welcome and Introductions (All)**
- **Airport Green Roof (Kristin Hall, Office of Sustainability)**
- **City's Park Assessment (Jessica Gift, Capital Projects)**
- **Cleveland Tree Plan updates (Cleveland Tree Coalition)**
- **Climate Smart Cities (Matt Schmidt, Trust for Public Land)**
- **Pollinators (Amber Barnes, Pollinator Partnership
Cathi Lehn, Office of Sustainability)**
- **Tour of Morgan Conservatory**



Kristin Hall, Director
Mayor's Office of Sustainability

Cleveland Airport Green Roof



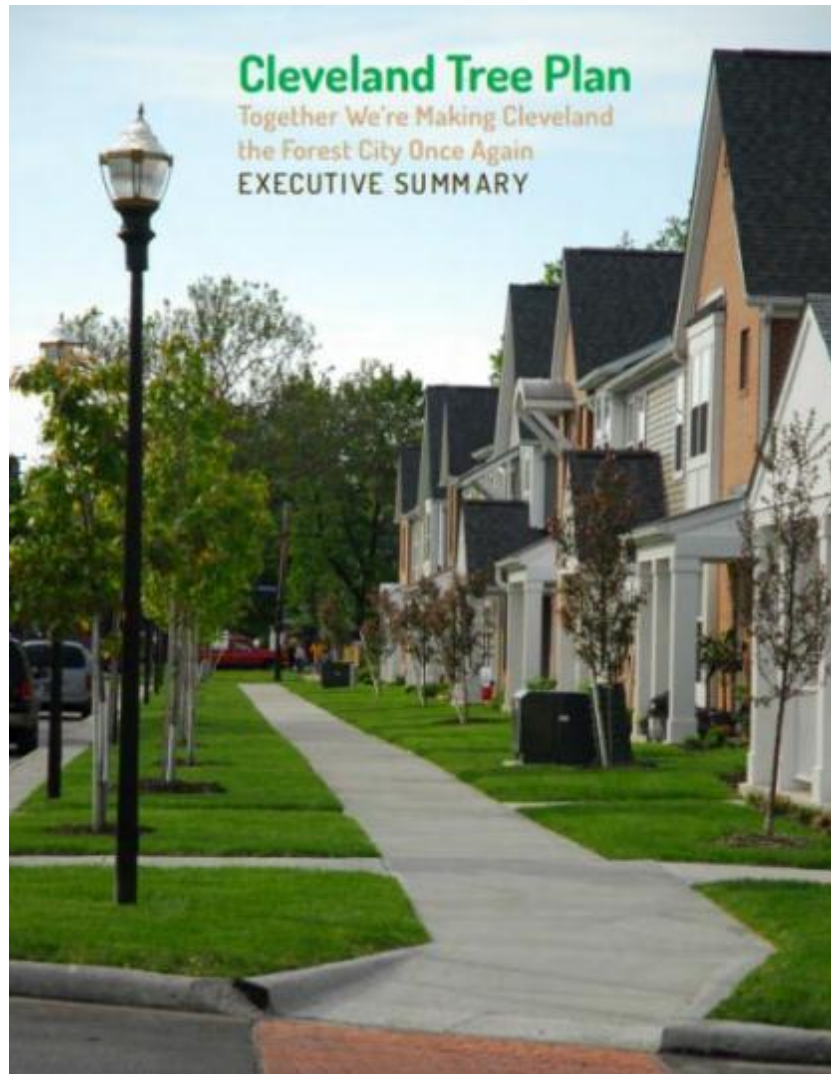
Cleveland Airport Green Roof





Jessica Gift, Manager of Parks and Recreation, Research and Planning
City of Cleveland, Mayor's Office of Capital Projects (MOCAP)





- Sandra Albro, Co-Chair
Holden Forests and Gardens
- Emily Bacha
Western Reserve Land Conservancy
- Chad Clink
Holden Forests and Gardens



Year of Vibrant Green Space Celebration Committee

June 19, 2017

Co-chairs:

Sandra Albro
Holden Forests & Gardens

Jill Ziegler
Forest City Realty Trust

Cleveland Tree Plan

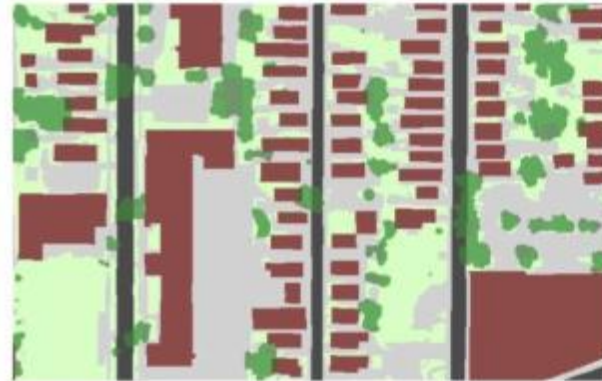
Together We're Making Cleveland
the Forest City Once Again
EXECUTIVE SUMMARY



CLEVELAND TREE PLAN



- Published in 2013
- Average 19% tree canopy citywide
 - 4%–39%
 - not distributed equitably



Where we are now:

19%
Detroit-Shoreway SPA



CLEVELAND TREE PLAN



ACTIONS

1. Formalize Partnerships
2. Outreach and Education
3. Funding Plan
4. Tree Inventory
5. Management Plan
6. Operational Review
7. Canopy Goal
8. Policy Changes
9. Plant with a Purpose

CLEVELAND TREE COALITION



- Work collaboratively on policies, programs and engagement to rebuild tree canopy
- 30+ organizations



CLEVELAND TREE COALITION



MEMBERS

- AECOM
- Alliance for the Great Lakes
- American Forests
- Campus District
- Cleveland Clinic
- Cleveland City Planning
- Cleveland Division of Forestry
- Cleveland Metroparks
- Cleveland Metropolitan Housing Authority
- Cleveland Museum of Natural History
- Cleveland Neighborhood Progress
- Cleveland State University
- Cuyahoga County Land Bank
- Cuyahoga River Restoration
- Cuyahoga Soil and Water Conservation District
- Davey Resource Group
- Dominion
- Forest City Realty Trust
- Holden Forests & Gardens
- KeyBank
- Lakeview Cemetery
- LAND Studio
- Mayor's Office of Sustainability
- Mayor's Office of Capital Projects
- Northeast Ohio Areawide Coordinating Agency
- Northeast Ohio Regional Sewer District
- Ohio Department of Natural Resources
- Ohio Landscape Association
- PwC
- University Hospitals
- West Creek Conservancy
- Western Reserve Eco Network
- Western Reserve Land Conservancy

CLEVELAND CANOPY GOAL



- Tree experts from several organizations with sign-off by Coalition
- 30% tree canopy by 2040 (planted by 2030)
- 50,000 trees by 2020
 - City of Cleveland: 5,000 trees by 2020
- Stretch goal: 40%

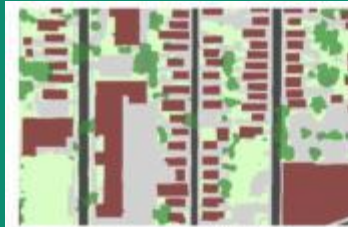


Where we want to be:

30%
Edgewater SPA



Credit: CSU Center for Community Planning and Development using information from the Cleveland Tree Plan, the Cuyahoga County Greenprint and Google Streetview



Where we are now:

19%
Detroit-Shoreway SPA



Citywide High Tree Canopy:

39%
Euclid-Green SPA



CLEVELAND TREE PLAN



TREE BENEFITS

- ***Trees improve public health and safety:***
 - improve oxygen
 - reduce asthma and other respiratory issues
 - reduce violence in neighborhoods as tree canopy increases
- ***Trees add economic value to residential properties and businesses:***
 - cut summer energy costs for cooling by up to 20%
 - increases business traffic in commercial districts

CLEVELAND TREE PLAN




TREE BENEFITS

- ***Trees improve the environment:***
 - slow stormwater
 - reduce pollutants
 - absorb carbon dioxide
 - store carbon
- ***Trees are critical for non-human animals:***
 - increase urban wildlife habitat
 - part of many kinds of conservation efforts

GET INVOLVED!



- Encourage your organization to join the Coalition
- Commit to planting trees in your own yard
- Advocate for protecting and increasing tree canopy in your neighborhood
- Learn to be a tree steward
-  /cletrees



Q&A

Co-chairs:

Sandra Albro
Cleveland Botanical Garden

Jill Ziegler
Forest City Realty Trust



celebrating urban reforestation efforts

#ARBORDAYCLE

[YEAR OF VIBRANT GREEN SPACE](#)[ABOUT ▾](#)[LEARN MORE ▾](#)

Arbor Day 2017 - Don't Miss Out!

ARBOR DAY 2017

Cleveland is in the midst of citywide revitalization to improve the quality of life for all citizens, and improving tree canopy is an important element in that transformation. Trees are a critical piece of our community: trees make us healthier and safer, add economic value to our homes and businesses, help us meet environmental challenges, and improve our natural world.

Cleveland was once nicknamed The Forest City, but over the last several decades the city has lost about half its tree canopy. Average tree canopy cover across the city is low at 19%, only one quarter of what is possible. Each year an estimated 97 acres of tree canopy is lost. At this rate, canopy will drop to 14% by 2040 unless we act now. The [Cleveland Tree Plan](#) is built on the need rebuild the urban forest, together.

This Arbor Day, do your part to reforest the Forest City at one of the following fantastic #ArborDayCLE events organized by the Cleveland Tree Coalition or one of its institutional members.

If you know of another Arbor Day event taking place in Northeast Ohio, please email



SELECT EARTH DAY AND ARBOR DAY EVENTS in NORTHEAST OHIO

For more details and to learn about many more events click [here](#)

Wednesday, April 19th

Tree Steward Training Part I

Date of event: April 19th from 5:30-9:00pm

Location: Third Federal Auditorium, 7007 Broadway Avenue, Cleveland, 44105

Website: <https://www.wrlandconservancy.org/event/treesteward-041917/>

Saturday, April 22nd (EARTH DAY)

Celebrations/Festivals

EarthFest

Date of event: April 22nd from 10am-7pm

Location: Cuyahoga County Fairgrounds, 19021 Bagley Rd, Middleburg Heights, OH

Website: <http://earthdaycoalition.org/>

Tree Planting

Slavic Village Tree Planting Event

Date of event: April 22 at 8am

Location: Boys and Girls Club, 6114 Broadway Avenue, Cleveland, OH

Website: <http://www.wrlandconservancy.org>

Thursday, April 27th

Fundraiser

Toast to Trees

Date of event: April 27 from 5:30-7:30pm

Location: Nano Brew 1859 West 25th Street Cleveland OH

EARTH DAY TREE PLANTING



- Multiple Cleveland Tree Coalition members teamed up with the Third Federal Foundation, the Boys and Girls Club of Greater Cleveland, and Slavic Village Development to plant 25 robust trees on the club campus



ARBOR DAY @ EARTH FEST



- Staff and volunteers distributed 1,000 tree seedlings to the public in an “assembly line” process (additional 1,500 at other Arbor Day events) with the support of Forest City, Key Bank, and multiple Cleveland Tree Coalition members
- Participants mapped where trees were planted
- Workshops were held on the value of trees and proper tree planting





ARBOR DAY PLANTING



- Western Reserve Land Conservancy has organized an Arbor Day Tree Planting at Citizens Academy in Glenville with staff from City of Cleveland Office of Sustainability, Holden Forests & Gardens, Davey Tree, and Northeast Ohio Regional Sewer District
- Mayor Frank Jackson and members of the Cleveland Tree Coalition announced Cleveland's tree canopy goal before planting

Citizens Academy

Mahatma Gandhi Campus

A school dedicated to peace and nonviolence

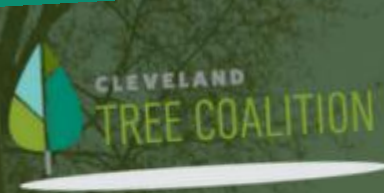




ARBOR DAY MARKETING



- Cleveland Tree Plan
- Cleveland Tree Coalition Facts at a Glance (brief description of Coalition, Cleveland Tree Plan, and Benefits of Trees)
- Cleveland Tree Coalition Contacts
- Contact Information Collection Forms for Tree Giveaways (paper and electronic)



HAPPY ARBOR DAY!

Join us in making a TREEmendous difference!
#ArborDayCLE

Each year an estimated 97 acres of Cleveland's tree canopy is lost. At this rate, canopy will drop to 14% by 2040 unless we act now.

It is time to rebuild our urban forest.

Trees improve public health. Higher levels of tree canopy cover have been associated with lower rates of asthma.



ARBOR DAY MARKETING



@CLEtrees

#ArborDayCLE



Vibrant Green Communities

CLEVELAND FOUNDATION GRANT



Cleveland Tree Plan



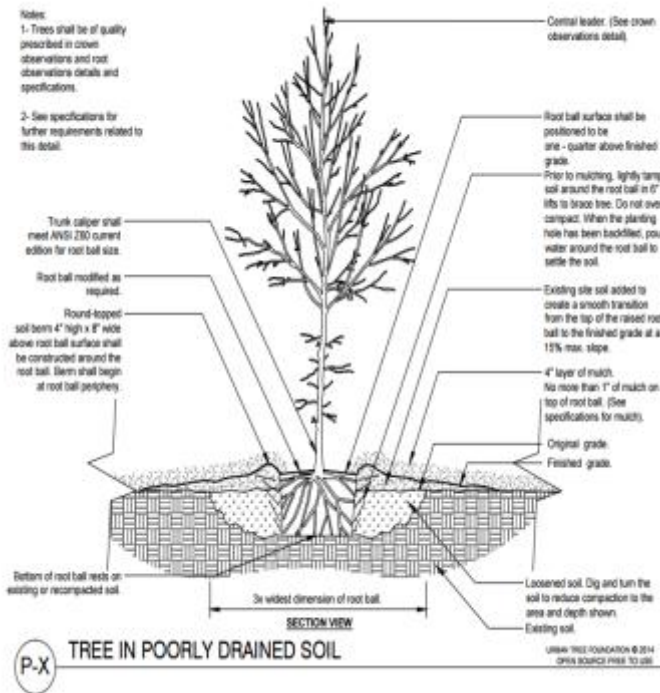
Action #2

Develop and implement an outreach and education strategy



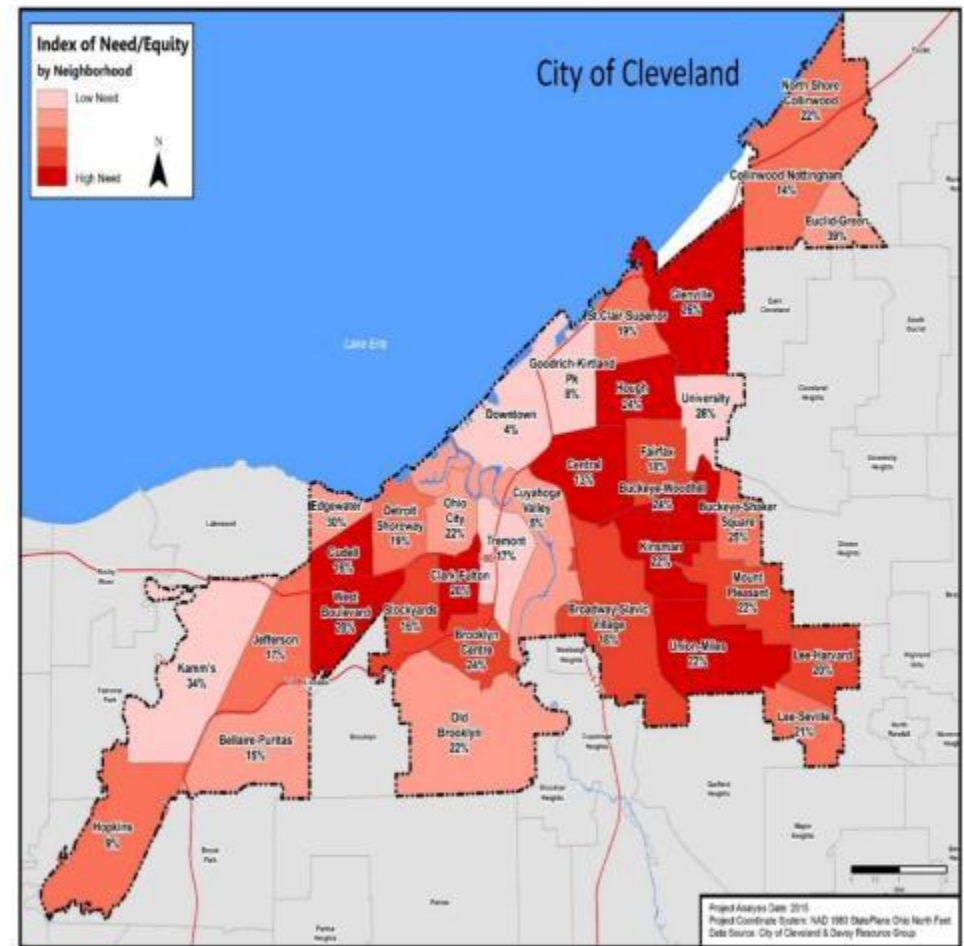
Action #8

Institute policy changes supportive of urban forestry



Action #9

Plant with a purpose: trees for neighborhood equity



Grant Outcomes

- 1) Assess and improve city tree policies (policy guide)
- 2) Collaborate on purposeful, equitable, & cost effective planting campaigns
- 3) Educate the public on the benefits of trees through community education and outreach
- 4) Develop and pilot a Tree Corps program (workforce development)

Supports 2 new positions –
Arborist Educator and
Tree Care Coordinator



Thank You!

Chad Clink, BCMA/RCA#589
Community Forester

The Holden Arboretum
9500 Sperry Road
Kirtland, Ohio 44094
P 330.760.1476
F 440.256.5836



Matt Schmidt
Program Director
Trust for Public Land



OUR MISSION

The Trust for Public Land creates parks and protects land for people, ensuring healthy, livable communities for generations to come.

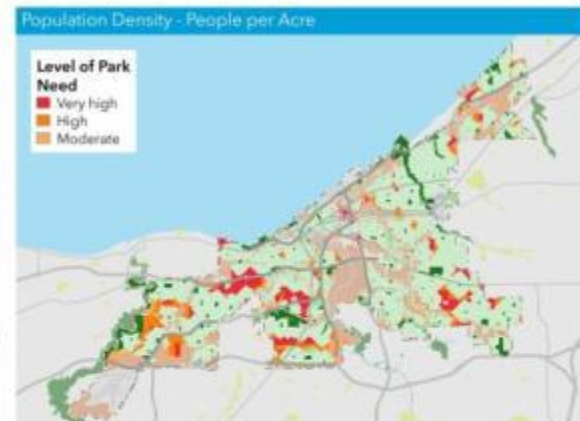
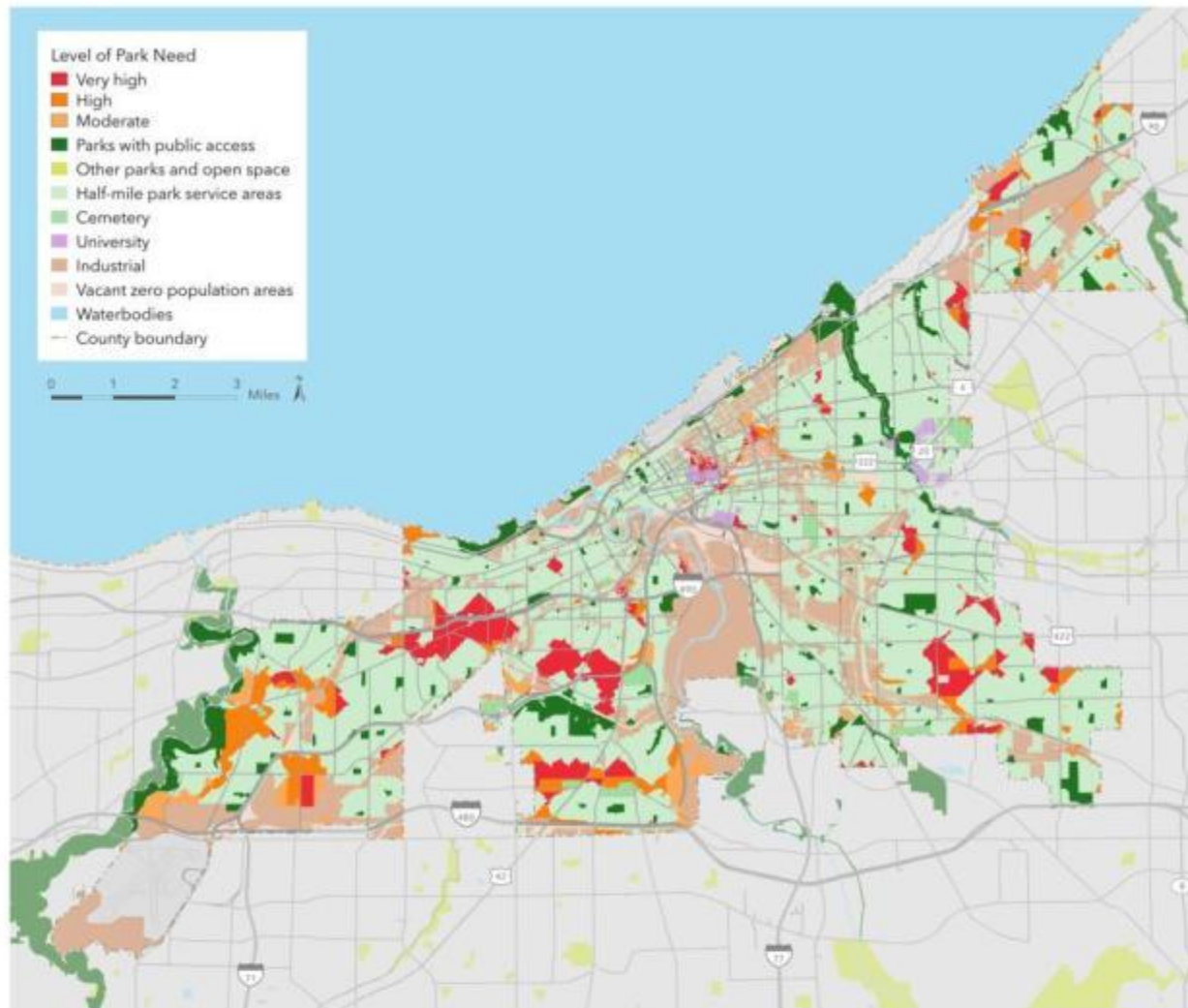
A person is swinging on a rope swing that hangs from a large, gnarled tree on a rocky cliff. The person is wearing a plaid shirt and dark pants. Below them, a vast valley stretches out, featuring a city, a river, and rolling hills under a clear sky. The scene is captured from a low angle, emphasizing the height of the cliff and the swing.

**THE
TRUST
FOR
PUBLIC
LAND**

Our values

- People need and deserve access to nature
- Our work should span cities to wilderness
- When we engage community, we create community
- Equity matters





The Trust for Public Land 2017 *ParkScore*® index

CLEVELAND, OHIO

The Trust for Public Land ParkScore® index analyzes public access to existing parks and open space. The analysis incorporates a two-step approach: 1) determines where there are gaps in park availability, and 2) constructs a demographic profile to identify gaps with the most urgent need for parkland. Park gaps are based on a dynamic 1/2 mile service area (10 minute walking distance) for all parks. In this analysis, service areas use the street network to determine walkable distance - streets such as highways, freeways, and interstates are considered barriers.

Demographic profiles are based on 2016 Forecast block groups provided by Esri to determine park need for density of youth, density of individuals in

households with income less than 75% of city median income (Cleveland less than \$25,000), and population density (people per acre).

The combined level of park need result shown on the large map combines the three demographic profile results and assigns the following weights:

- 50% = population density (people per acre)
- 25% = density of youth age 19 and younger
- 25% = density of individuals in households with income less than \$25,000

Areas in dark red show a very high need for parks.

Special thanks to the following data providers: Cleveland, Esri. Information on this map is provided for purposes of discussion and visualization only. Map created by The Trust for Public Land in March 2, 2017. The Trust for Public Land and The Trust for Public Land logo are federally registered marks of The Trust for Public Land. Copyright © 2017 The Trust for Public Land. www.tpl.org

Cleveland, OH

2017
Rank

45

ParkScore

54



Acreage		Investment	Facilities Average				Access
12		11	13				29
out of 40 points		out of 20 points	out of 20 points				out of 40 points
Median Park Size	Park Land Percent of City Area	Spending per Capita	Basketball Hoops per 10,000 Residents	Dog Parks per 100,000 Residents	Playgrounds per 10,000 Residents	Recreation/Senior Centers per 20,000 Residents	Percent within 10-minute walk
6	6	11	20	4	14	14	80%
out of 20 points	out of 20 points	out of 20 points	out of 20 points	out of 20 points	out of 20 points	out of 20 points	
3.4 Acres	6%	\$99.56	6	0.5	3.7	1.1	

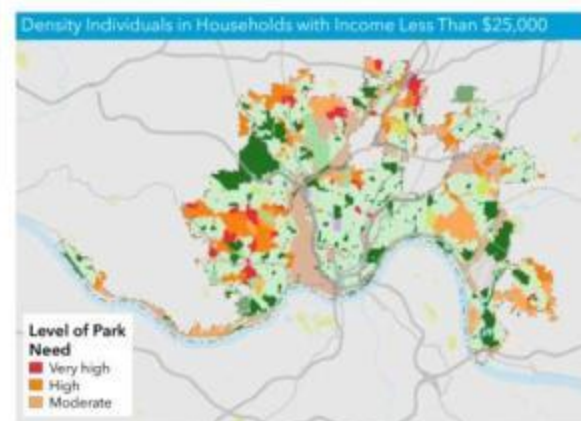
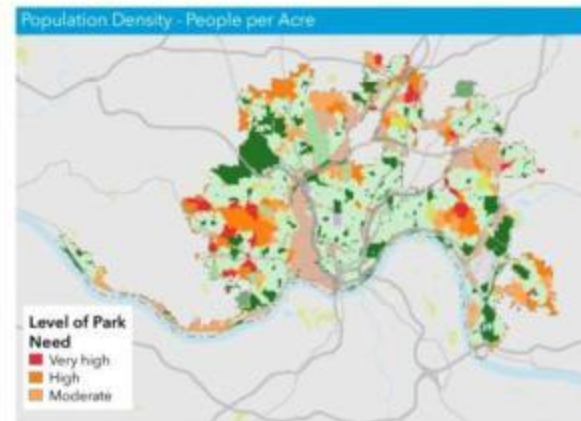
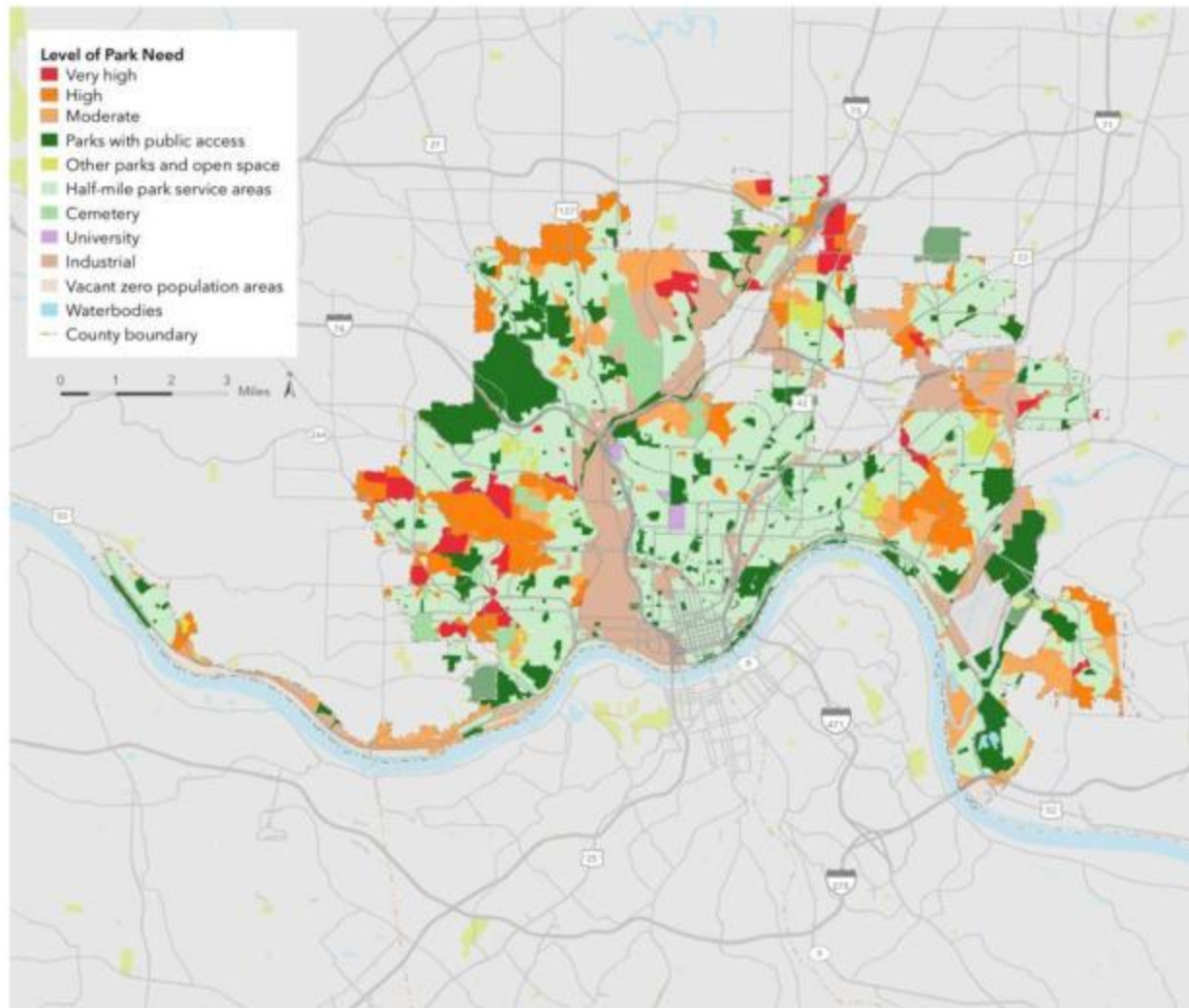
Each city can earn a maximum of 120 points. Points are awarded for eight statistical measures in three categories: acreage, facilities and investment, and access. The total is then normalized to a scale out of 100. This final value is the city's ParkScore.

Demographic Category	Total	Population Served**	Percent Served**	Population Not Served	Percent Not Served
Total Population	383,756	306,331	80%	77,425	20%
Age 19 and Younger	100,005	80,216	80%	19,789	20%
20-64 Years Old	231,810	184,305	80%	47,505	20%
Over 64 Years Old	51,939	41,816	81%	10,123	19%
Demographic Category	Total	Households Served**	Percent Served**	Households Not Served	Percent Not Served
Under 75% Median City Income	75,179	61,539	82%	13,640	18%
75%-125% Median City Income	22,320	17,772	80%	4,548	20%
Over 125% Median City Income	67,149	52,716	79%	14,433	21%

Total Population may vary from estimates published elsewhere due to differences between city boundaries and the boundaries of Census Block Groups used in this analysis, or due to methodology differences in third party data providers' forecast demographics.

The Trust for Public Land works with communities to ensure that everyone has parks, gardens, playgrounds, trails, and other natural places within a 10-minute walk from home. Learn more at www.tpl.org

**Inside 10-minute walk dynamic park buffer
2016 Forecast Census Block Groups
Provided by Esri



The Trust for Public Land 2017 *ParkScore*® index

CINCINNATI, OHIO

The Trust for Public Land *ParkScore*® index analyzes public access to existing parks and open space. The analysis incorporates a two-step approach: 1) determines where there are gaps in park availability, and 2) constructs a demographic profile to identify gaps with the most urgent need for parkland. Park gaps are based on a dynamic 1/2 mile service area (10 minute walking distance) for all parks. In this analysis, service areas use the street network to determine walkable distance - streets such as highways, freeways, and interstates are considered barriers.

Demographic profiles are based on 2016 Forecast block groups provided by Esri to determine park need for density of youth, density of individuals in

households with income less than 75% of city median income (Cincinnati less than \$25,000), and population density (people per acre).

The combined level of park need result shown on the large map combines the three demographic profile results and assigns the following weights:

- 50% = population density (people per acre)
- 25% = density of youth age 19 and younger
- 25% = density of individuals in households with income less than \$25,000

Areas in dark red show a very high need for parks.

Special thanks to the following data providers: Cincinnati, Esri. Information on this map is provided for purposes of discussion and visualization only. Map created by The Trust for Public Land on January 31, 2017. The Trust for Public Land and The Trust for Public Land logo are federally registered marks of The Trust for Public Land. Copyright © 2017 The Trust for Public Land. www.tpl.org

Cincinnati, OH



2017 Rank

ParkScore

10

71.5



Acreage		Investment	Facilities Average				Access
23		20	18				25
out of 40 points		out of 20 points	out of 20 points				out of 40 points
Median Park Size	Park Land Percent of City Area	Spending per Capita	Basketball Hoops per 10,000 Residents	Dog Parks per 100,000 Residents	Playgrounds per 10,000 Residents	Recreation/Senior Centers per 20,000 Residents	Percent within 10-minute walk
9	14	20	19	13	20	20	71%
out of 20 points	out of 20 points	out of 20 points	out of 20 points	out of 20 points	out of 20 points	out of 20 points	
4.9 Acres	14%	\$190.79	5	1.3	5	2.2	

Each city can earn a maximum of 120 points. Points are awarded for eight statistical measures in three categories: acreage, facilities and investment, and access. The total is then normalized to a scale out of 100. This final value is the city's ParkScore.

Demographic Category	Total	Population Served**	Percent Served**	Population Not Served	Percent Not Served
Total Population	302,939	216,597	71%	86,342	29%
Age 19 and Younger	77,297	55,387	72%	21,910	28%
20-64 Years Old	188,234	135,775	72%	52,459	28%
Over 64 Years Old	37,398	25,433	68%	11,965	32%
Demographic Category	Total	Households Served**	Percent Served**	Households Not Served	Percent Not Served
Under 75% Median City Income	53,420	39,787	74%	13,633	26%
75%-125% Median City Income	32,758	22,585	69%	10,173	31%
Over 125% Median City Income	50,064	34,448	69%	15,616	31%

Total Population may vary from estimates published elsewhere due to differences between city boundaries and the boundaries of Census Block Groups used in this analysis, or due to methodology differences in third party data providers' forecast demographics

**Inside 10-minute walk dynamic park buffer
2016 Forecast Census Block Groups
Provided by Esri

The background image shows a park scene with a pond in the center. The pond has several large, light-colored rocks in it. There are trees around the pond, some with autumn-colored leaves. In the background, there's a fence and some buildings. The sky is overcast.

Climate-Smart Cleveland

A Climate Collaboration Model

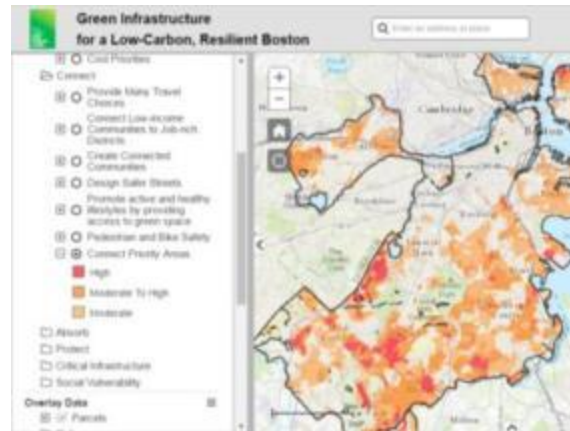


Our Climate-Smart Cities Framework

Climate-Smart Cities Implementation



GI Coalition Building /
Learning Labs



Policy and Decision Making

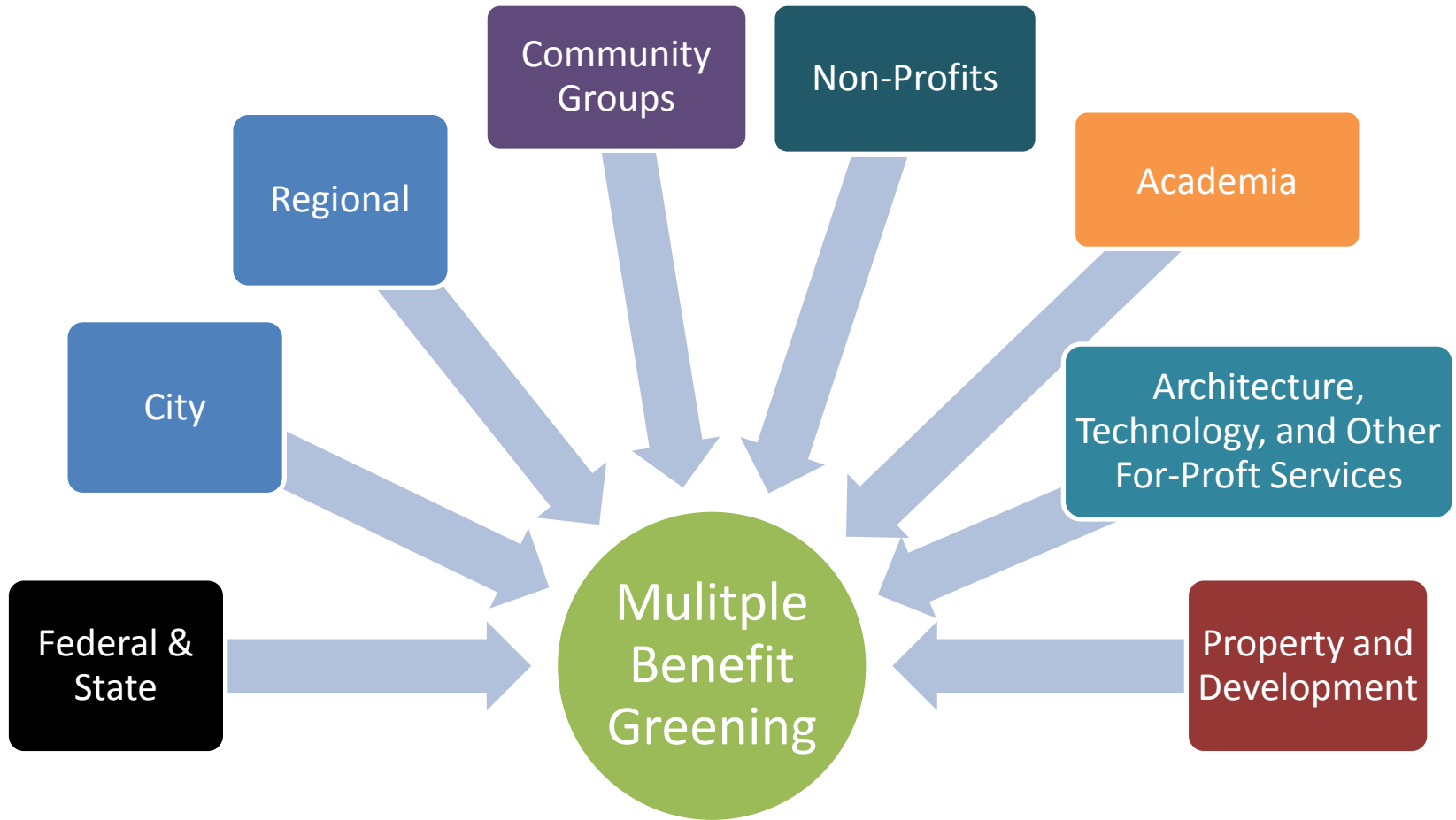


GI Project Development



Range of Implementation Opportunities

Cross Sector Technical Advisory Team



Cleveland Modeling Criteria

Equity

- Connecting People to Parks
- Low Income Households
- Communities of Color
- Renters
- Residents Under 5
- Residents Over 64

Cool

- Impervious Surfaces
- **Urban Heat Islands – Day**
- Urban Heat Islands - Night

Public Health

- Diabetes
- Asthma
- Obesity
- Kidney Disease
- Stroke
- Coronary Disease
- **Lead Levels**

Cleveland Modeling Criteria

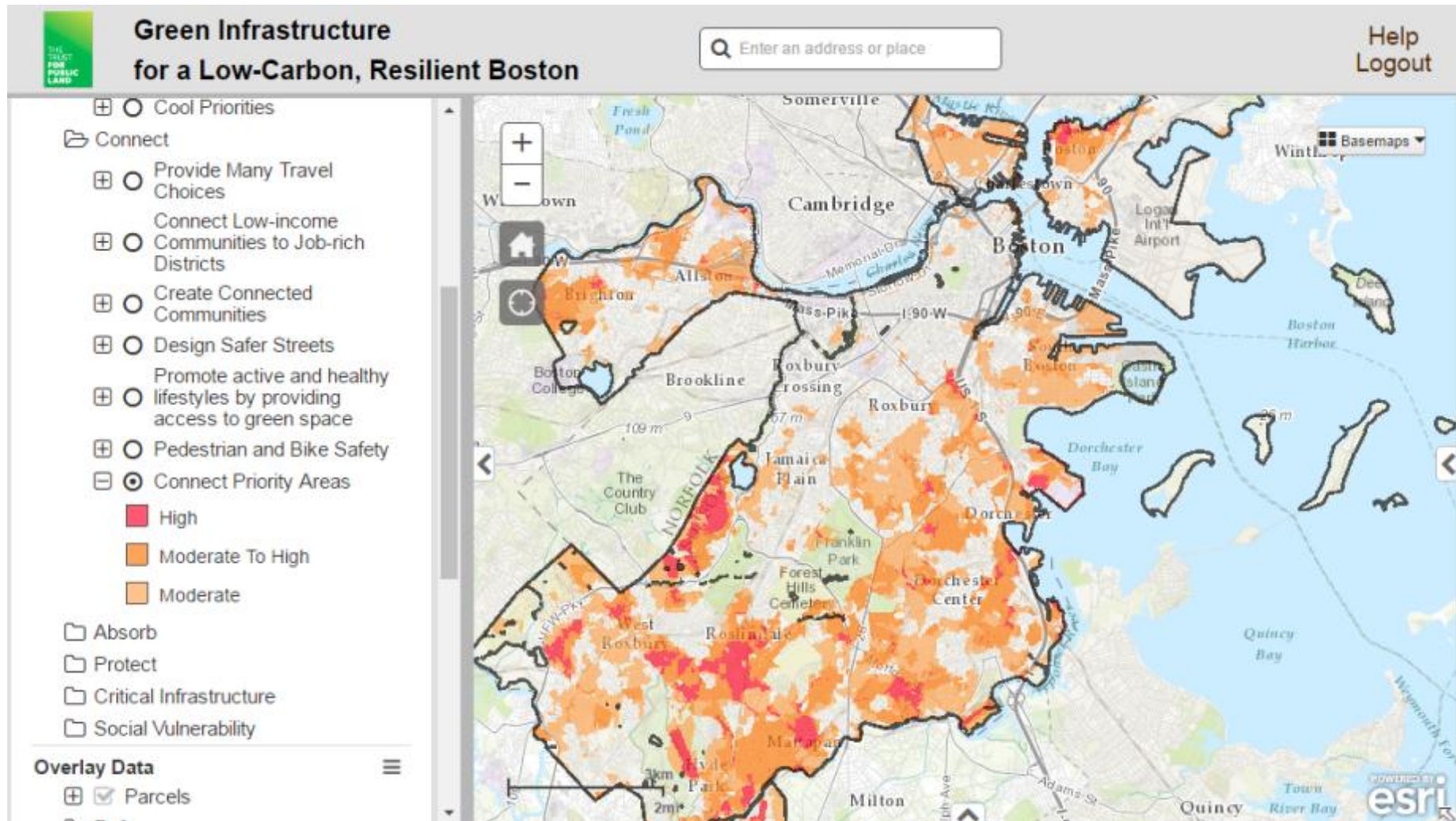
Connect

- **Improve Transit Access**
- **Create Connections to Parks and Green Space**
- Fill Gaps in the Active Transportation Network
- Connect Low-Income Communities to Job Districts
- **Safe Routes to School**
- Enhance Bicyclist and Pedestrian Safety

Absorb

- Flood Risk
- Impaired Waters
- Wetland Borders
- Nuisance Flooding
- Sinks
- Aging Infrastructure
- Estimate Runoff Potential

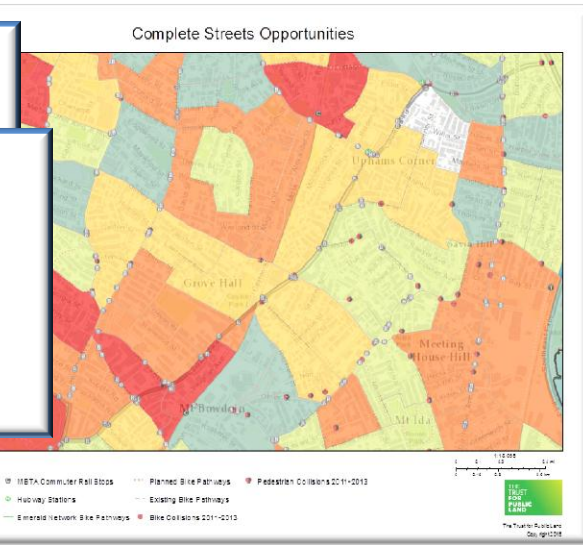
Decision Support Tool



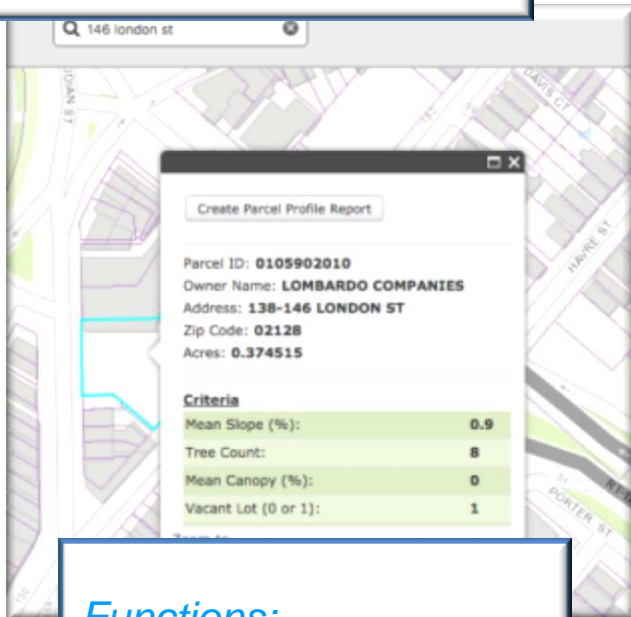
Data Exploration

Functions:

- Layer exploration
- Cartography Tools
- Print Tool
- Comparison Slider



Site Analysis



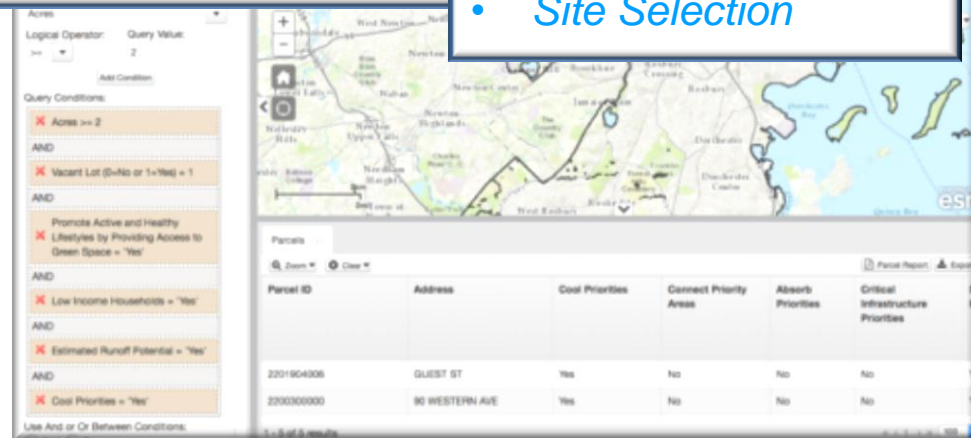
Functions:

- Address Search
- Parcel Selection
- Profile Reports

Site Selection

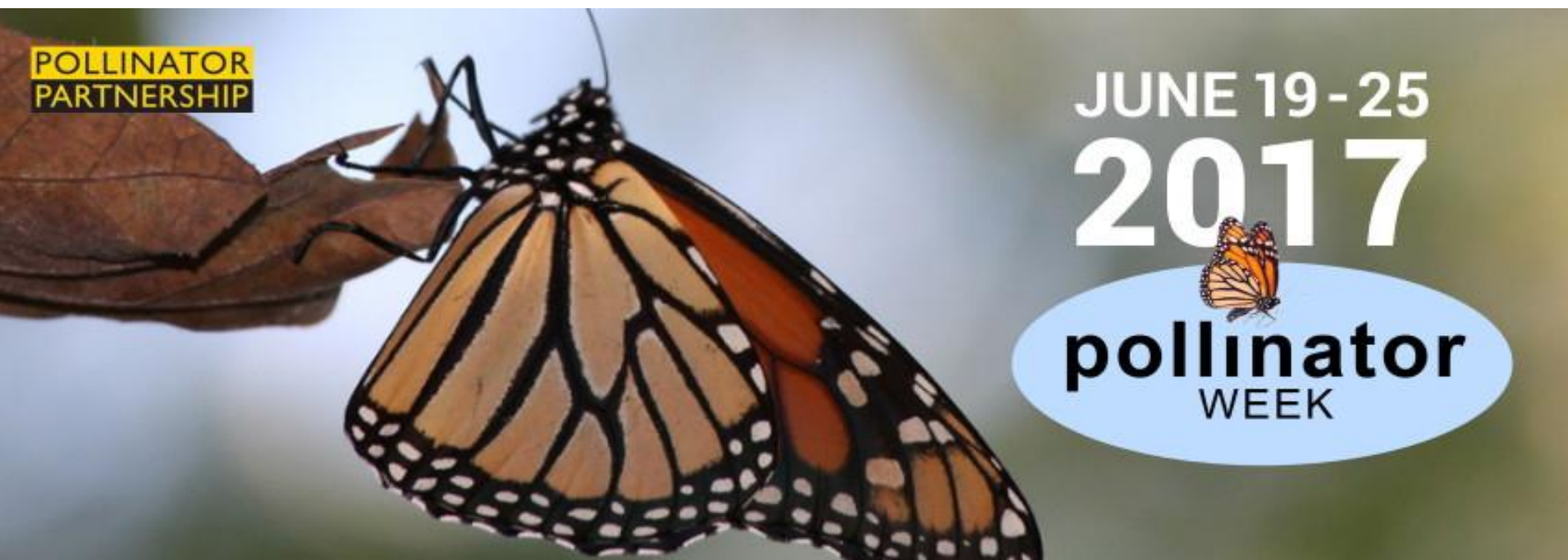
Functions:

- Query
- Site Selection



Utilizing the GIS Functions





Amber Barnes, Pollinator Partnership

<http://www.pollinator.org/>

<http://www.sustainablecleveland.org/blog>



*Create and improve pollinator habitat across the State of Ohio.
Increase and improve pollinator conservation for all Ohioans.*



HOME

ABOUT THE
INITIATIVE

HABITAT

EDUCATION

RESEARCH

MONARCHS

POLLINATORS

PROJECTS/GET
INVOLVED



All You Can 🍯 Where You Can

<http://www.ophi.info/>



Ohio Pollinator Health, Protection and Conservation Plan

Scheduled for release during National Pollinator Week

- Executive Summary
- Section I. Pollinator Roles and Concerns
- Current Status of Ohio Pollinators
- Pollinator Health Issues
- Section II. Actions to Benefit Pollinators
- Goals for Pollinator Health
- Improving Pollinator Habitat in Gardens and Lawns
- Beekeeping to Maximize Pollinator Health
- Maximizing Pollinator Health and Pollination Services on Farms
- Improving Pollinator Habitat in Prairies, Roadsides, and Open Spaces
- Public Health and Minimizing Impacts to Pollinators
- Appendix A. Plan Creation, Implementation, and Evaluation



Comments?

Questions?

TOUR!



morgan art of papermaking
conservatory & educational foundation

READ MORE >

