

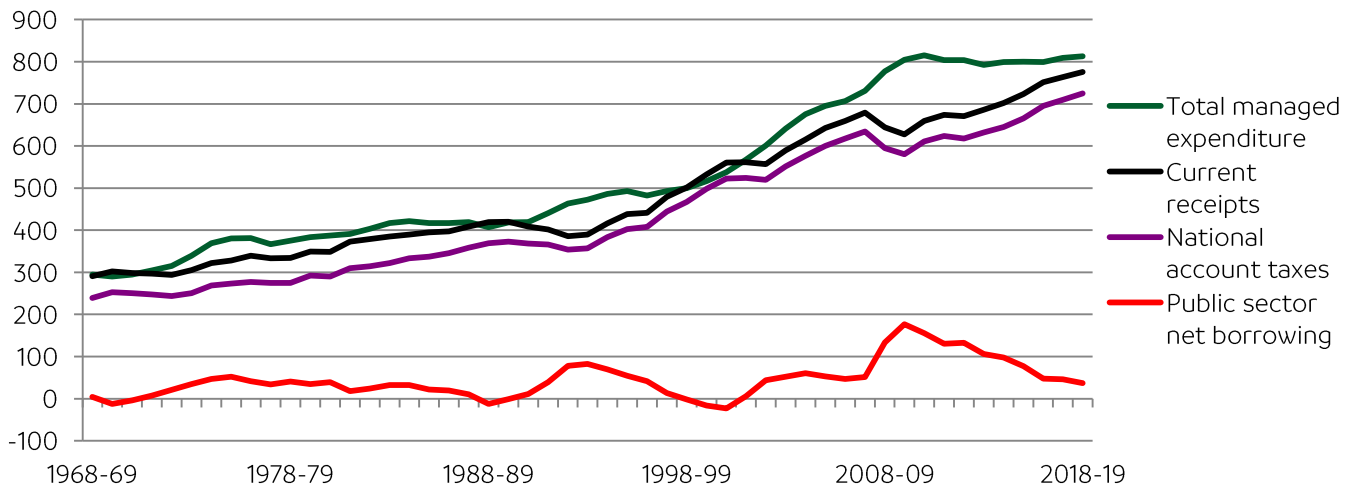
Briefing: highest tax burden this year since 1969-70

July 2018

- Overall government revenues this year are at a 32-year high, at 37 per cent of GDP.
- The tax burden this year is at a 49-year high, at 34 per cent of GDP.

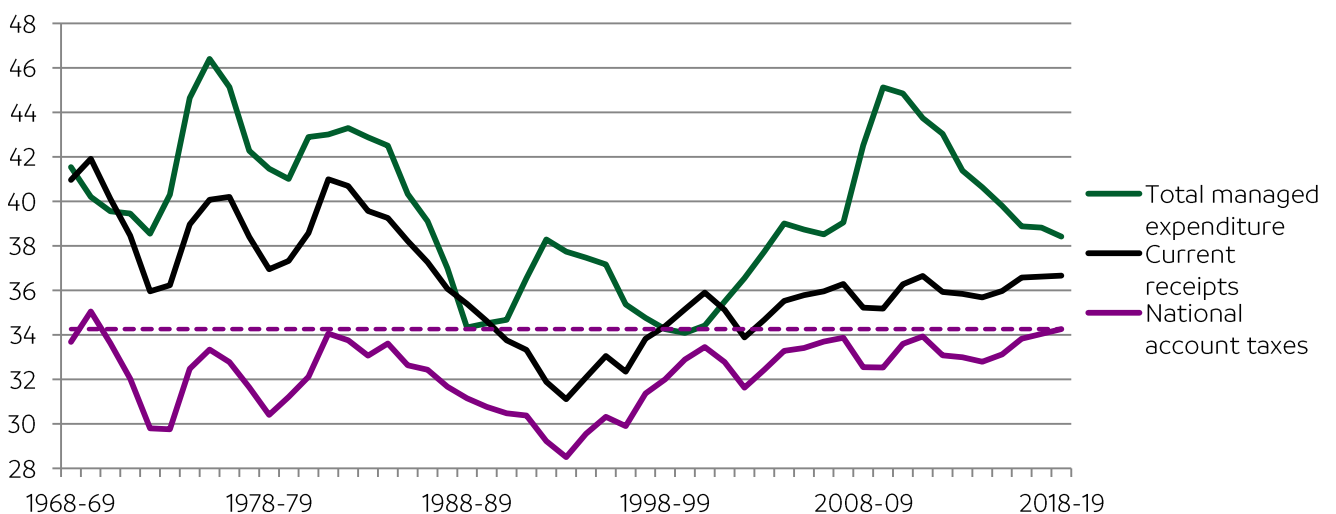
This year, the government will raise £776 billion in total, equivalent to approximately £28,000 per household.¹ These receipts will partly finance its £813 billion of spending, leaving a deficit of £37 billion. Some of the receipts are interest payments, dividends and profits from trading activities, but most are taxes.

Chart 1: receipts, taxes, spending and deficits, 1968-69 to 2018-19 (£ billion in 2018-19 prices)



This year, current receipts will account for 36.7 per cent of GDP, the highest since 1986-87 when the figure was 37.3 per cent. But not all receipts are taxes. This year, taxes will account for 34.3 per cent of GDP, the highest since 1969-70 when the figure was 35.0 per cent. Privatisations have reduced non-tax receipts since the 1970s and 1980s, which explains why the overall burden was higher in the 1970s but the tax burden is higher now.

Chart 2: receipts, taxes and spending, 1968-69 to 2018-19 (per cent of GDP)



¹ See table 1 overleaf for detail. NB: current receipts in 2011-12 were 36.65 per cent and 36.66 per cent in 2018-19, but both display as 36.7 per cent due to rounding. Fiscal figures from OBR *Public finances databank*. Household figures calculated by dividing by estimates of numbers of households in ONS, *Families and households*, 8 November 2017, <https://www.ons.gov.uk/peoplepopulationandcommunity/birthsdeathsandmarriages/families/datasets/familiesandhouseholds>, (accessed 29 June 2018).

Table 1: receipts, taxes, spending and borrowing, 1968-69 to 2018-19²

Year	Current receipts			National account taxes			Total managed expenditure			Public sector net borrowing		
	(£ bn)	(£bn 2018-19 prices)	(% GDP)	(£ bn)	(£bn 2018-19 prices)	(% GDP)	(£ bn)	(£bn 2018-19 prices)	(% GDP)	(£ bn)	(£bn 2018-19 prices)	(% GDP)
1968-69	19.2	290.4	41.0	15.8	238.8	33.7	19.5	294.5	41.5	0.3	4.1	0.6
1969-70	21.4	302.1	41.9	17.9	252.6	35.0	20.5	289.8	40.2	-0.9	-12.3	-1.7
1970-71	23.2	298.4	40.1	19.5	250.2	33.6	22.9	294.3	39.6	-0.3	-4.2	-0.6
1971-72	24.9	297.2	38.5	20.7	247.5	32.0	25.5	304.8	39.4	0.6	7.6	1.0
1972-73	26.6	294.1	36.0	22.1	243.7	29.8	28.5	315.2	38.5	1.9	21.1	2.6
1973-74	30.1	305.1	36.2	24.7	250.6	29.8	33.4	339.5	40.3	3.4	34.3	4.1
1974-75	38.3	322.2	39.0	31.9	268.6	32.5	43.9	369.3	44.7	5.6	47.1	5.7
1975-76	48.4	328.4	40.1	40.3	273.2	33.3	56.1	380.2	46.4	7.7	51.9	6.3
1976-77	57.1	339.8	40.2	46.5	277.0	32.8	64.1	381.4	45.1	7.0	41.7	4.9
1977-78	63.7	333.5	38.4	52.5	274.7	31.6	70.2	367.1	42.3	6.4	33.6	3.9
1978-79	71.0	334.1	37.0	58.4	274.9	30.4	79.7	374.9	41.5	8.7	40.9	4.5
1979-80	86.8	349.4	37.3	72.5	292.0	31.2	95.3	383.8	41.0	8.5	34.4	3.7
1980-81	103.2	348.6	38.6	85.9	290.2	32.1	114.7	387.6	42.9	11.5	39.0	4.3
1981-82	122.2	373.1	41.0	101.5	310.0	34.1	128.2	391.5	43.0	6.0	18.3	2.0
1982-83	133.1	379.0	40.7	110.4	314.4	33.8	141.6	403.3	43.3	8.5	24.3	2.6
1983-84	141.6	384.9	39.6	118.3	321.6	33.1	153.4	417.0	42.9	11.8	32.1	3.3
1984-85	151.5	389.4	39.3	129.7	333.4	33.6	164.1	421.6	42.5	12.5	32.2	3.2
1985-86	162.2	394.7	38.2	138.6	337.1	32.6	171.3	416.7	40.3	9.0	22.0	2.1
1986-87	170.0	397.1	37.3	148.0	345.5	32.4	178.4	416.7	39.1	8.4	19.6	1.8
1987-88	184.5	408.4	36.1	162.0	358.5	31.7	189.3	418.9	37.0	4.7	10.5	0.9
1988-89	201.9	419.5	35.4	177.7	369.2	31.1	195.9	407.0	34.3	-6.0	-12.5	-1.1
1989-90	217.4	419.7	34.6	193.2	373.0	30.8	216.8	418.5	34.5	-0.6	-1.2	-0.1
1990-91	228.8	408.3	33.8	206.6	368.5	30.5	235.1	419.4	34.7	6.2	11.1	0.9
1991-92	237.8	401.4	33.3	216.8	365.8	30.4	260.9	440.3	36.5	23.0	38.9	3.2
1992-93	234.4	386.0	31.9	214.8	353.8	29.2	281.5	463.6	38.3	47.1	77.6	6.4
1993-94	242.1	389.4	31.1	221.8	356.7	28.5	293.7	472.3	37.7	51.6	82.9	6.6
1994-95	261.7	416.1	32.1	241.0	383.2	29.6	305.5	485.8	37.5	43.8	69.7	5.4
1995-96	284.1	438.5	33.1	260.6	402.2	30.3	319.4	493.0	37.2	35.3	54.5	4.1
1996-97	296.2	441.3	32.3	273.9	408.0	29.9	323.9	482.6	35.4	27.7	41.3	3.0
1997-98	324.3	479.4	33.8	300.6	444.4	31.4	333.2	492.6	34.8	8.9	13.2	0.9
1998-99	344.2	501.7	34.4	320.3	466.9	32.0	342.9	499.8	34.3	-1.2	-1.8	-0.1
1999-00	367.0	532.8	35.2	343.3	498.4	32.9	355.9	516.6	34.1	-11.1	-16.1	-1.1
2000-01	394.4	560.8	35.9	367.6	522.6	33.5	378.1	537.6	34.4	-16.3	-23.2	-1.5
2001-02	399.8	561.5	35.1	373.1	524.0	32.8	404.0	567.4	35.5	4.2	5.9	0.4
2002-03	405.7	556.8	33.9	378.8	519.8	31.6	437.6	600.5	36.5	31.9	43.8	2.7
2003-04	438.7	589.2	34.7	410.3	551.1	32.4	477.4	641.2	37.7	38.7	52.0	3.1
2004-05	470.7	615.1	35.5	440.9	576.2	33.3	516.9	675.4	39.0	46.1	60.3	3.5
2005-06	504.8	642.6	35.8	471.3	600.0	33.4	546.3	695.4	38.7	41.4	52.8	2.9
2006-07	533.9	659.5	36.0	500.2	617.8	33.7	571.8	706.3	38.5	37.9	46.8	2.6
2007-08	563.6	679.3	36.3	526.0	634.0	33.9	606.4	730.9	39.0	42.9	51.6	2.8
2008-09	548.2	643.9	35.2	506.5	595.0	32.5	661.7	777.2	42.5	113.5	133.3	7.3
2009-10	541.9	627.4	35.2	501.0	580.0	32.5	694.9	804.5	45.1	153.0	177.2	9.9
2010-11	580.2	659.4	36.3	537.4	610.8	33.6	717.3	815.2	44.8	137.1	155.8	8.6
2011-12 ¹	601.1	673.9	36.7	556.3	623.6	33.9	717.4	804.2	43.7	116.2	130.3	7.1
2012-13	611.0	670.9	35.9	562.3	617.5	33.1	731.8	803.6	43.0	120.9	132.7	7.1
2013-14	635.6	686.2	35.8	585.2	631.7	33.0	733.9	792.3	41.4	98.3	106.1	5.5
2014-15	659.9	702.0	35.7	606.4	645.2	32.8	751.4	799.4	40.6	91.5	97.4	4.9
2015-16	684.1	723.1	36.0	629.9	665.8	33.1	757.1	800.3	39.8	73.0	77.2	3.8
2016-17	726.5	751.3	36.6	672.2	695.1	33.8	772.5	798.9	38.9	46.0	47.6	2.3
2017-18	752.2	763.6	36.6	699.2	709.8	34.0	797.4	809.5	38.8	45.2	45.8	2.2
2018-19	775.8	775.8	36.7	724.9	724.9	34.3	812.9	812.9	38.4	37.1	37.1	1.8

² OBR, *Public finances databank*, 26 June 2018, obr.uk/data, (accessed 28 June 2018). 2018-19 figures derived from adjusting 2016-17 by the GDP deflator.