

Schools Program Module Descriptions

Modules range from 1-2 hours long. For first-time participants, we provide a quick introduction to TTLT and the Schools Program before we get into the module material. There is also a follow-up evaluation piece that will take place separately from the modules.

Invasive Species Management Module



This module will provide students with an understanding of what invasive species are, the impacts they have on our local environments, how they are managed, and how to help reduce their spread, while highlighting common species in the region. Evaluation pieces are built into the module in the form of surveys, memory tests, and knowledge assessments* to assess the change in student knowledge, attitude, and behavior in

relation to nature and the module topic. Activities, such as Build an Invasive, are included to enhance students' knowledge and understanding. Field trip/outdoor activities are available depending on the time of year and COVID-19 recommendations and guidelines. Activities may include Garlic Mustard pulling, invasive species plot monitoring, and/or invasive species inventory & mapping.

Following the module session, educators are asked to go through post-evaluation pieces with their class, as well as fill out the Educator Survey provided.

Additional follow-up activities are available to provide students the opportunity to better reflect on their experience and contribute to future improvements for the program.

*Knowledge assessment data will be recorded and collected for program evaluation use via Google Forms, virtual platform chat boxes, and/or paper forms. Evaluation data is anonymous and does not include the collection of any personal student information, such as names, email addresses, etc.

Native Plant Restoration Module

In this module, students will learn about native plants, why they are important, how they're used in restoration work, and how to help return them to the landscape. Evaluation pieces are built into the module in the form of surveys, memory tests, and knowledge assessments* to assess the change in student knowledge, attitude, and behavior in relation to nature and the module topic. Activities, such as the Native or Not Challenge, are included to enhance students' knowledge and understanding. Field trip/outdoor activities are available depending on the time of year and COVID-19 recommendations and guidelines. Activities may include starting & caring for native plants in the classroom, planting native plants, and/or preparing seed for restoration projects.



Following the module session, educators are asked to go through post-evaluation pieces with their class, as well as fill out the Educator Survey provided.

Additional follow-up activities are available to provide students the opportunity to better reflect on their experience and contribute to future improvements for the program.

*Knowledge assessment data will be recorded and collected for program evaluation use via Google Forms, virtual platform chat boxes, and/or paper forms. Evaluation data is anonymous and does not include the collection of any personal student information, such as names, email addresses, etc.

Plant ID & Seeds Introduction Module



This module will introduce the topics of plant identification and seed collecting/processing. Students will learn plant ID basics and why it is important for seed collecting/processing. Students will also learn seed collecting/processing basics. Evaluation pieces are built into the module in the form of surveys, memory tests, and knowledge assessments* to assess the change in student knowledge, attitude, and behavior in relation to nature and the module topic. Activities, such as Plant ID Detective, are included to enhance students' knowledge and understanding. Field trip/outdoor activities are available depending on the time of year and COVID-19 recommendations and guidelines. Activities may include processing native plant seeds (i.e. removing seeds from seed heads), seed packaging, and/or seed stratification.

Seed collecting could also be simulated if students have access and permission to use school or home gardens.

Following the module session, educators are asked to go through post-evaluation pieces with their class, as well as fill out the Educator Survey provided.

Additional follow-up activities are available to provide students the opportunity to better reflect on their experience and contribute to future improvements for the program.

*Knowledge assessment data will be recorded and collected for program evaluation use via Google Forms, virtual platform chat boxes, and/or paper forms. Evaluation data is anonymous and does not include the collection of any personal student information, such as names, email addresses, etc.

Species at Risk Module 1

In this module, students will learn about what Species at Risk are, how they're assessed across different geographic scales, the threats they face, the current situation, conservation efforts, and how to help prevent their loss. Evaluation pieces are built into the module in the form of surveys, memory tests, and knowledge assessments* to assess the change in student knowledge, attitude, and behavior in relation to nature and the module topic.

Following the module session, educators are asked to go through post-evaluation pieces with their class, as well as fill out the Educator Survey provided.

Additional follow-up activities are available to provide students the opportunity to better reflect on their experience and contribute to future improvements for the program.

*Knowledge assessment data will be recorded and collected for program evaluation use via Google Forms, virtual platform chat boxes, and/or paper forms. Evaluation data is anonymous and does not include the collection of any personal student information, such as names, email addresses, etc.



Species at Risk Module 2 – Become a Turtle Guardian



This module will provide the opportunity for students to learn about at-risk turtle species in Ontario and how to identify them for the purpose of citizen science. Adapted from the Turtle Guardians program offered by The Land Between, students will get the chance to become Level 1 Turtle Guardians after taking the Turtle ID Test[^]. Evaluation pieces are built into the module in the form of surveys, memory

tests, and knowledge assessments* to assess the change in student knowledge, attitude, and behavior in relation to nature and the module topic.

Following the module session, educators are asked to go through post-evaluation pieces with their class, as well as fill out the Educator Survey provided.

Additional follow-up activities are available to provide students the opportunity to better reflect on their experience and contribute to future improvements for the program.

[^]To officially be registered as a Turtle Guardian and receive a membership card in the mail, students must take the Turtle ID Test through the Turtle Guardians app.

*Knowledge assessment data will be recorded and collected for program evaluation use via Google Forms, virtual platform chat boxes, and/or paper forms. Evaluation data is anonymous and does not include the collection of any personal student information, such as names, email addresses, etc.

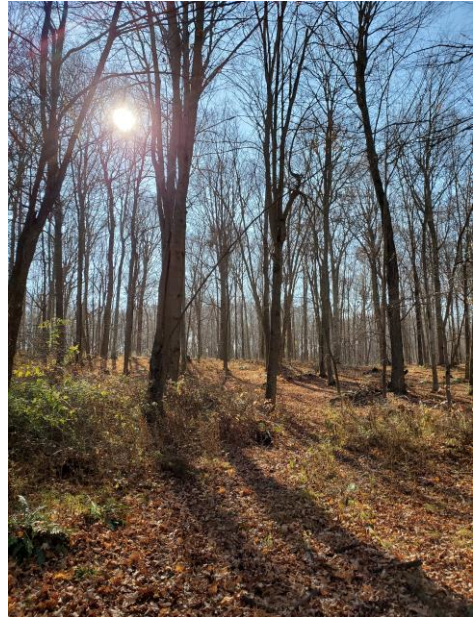
Forest Health Module

In this module, students will learn what a forest is, indicators of forest health, threats our forests face, conservation efforts, and how they can help. Evaluation pieces are built into the module in the form of surveys, memory tests, and knowledge assessments* to assess the change in student knowledge, attitude, and behavior in relation to nature and the module topic. Activities, such as Reading Between the Lines, are included to enhance students' knowledge and understanding.

Following the module session, educators are asked to go through post-evaluation pieces with their class, as well as fill out the Educator Survey provided.

Additional follow-up activities are available to provide students the opportunity to better reflect on their experience and contribute to future improvements for the program.

*Knowledge assessment data will be recorded and collected for program evaluation use via Google Forms, virtual platform chat boxes, and/or paper forms. Evaluation data is anonymous and does not include the collection of any personal student information, such as names, email addresses, etc.



Funded by the Ontario Trillium Foundation



An agency of the Government of Ontario
Un organisme du gouvernement de l'Ontario