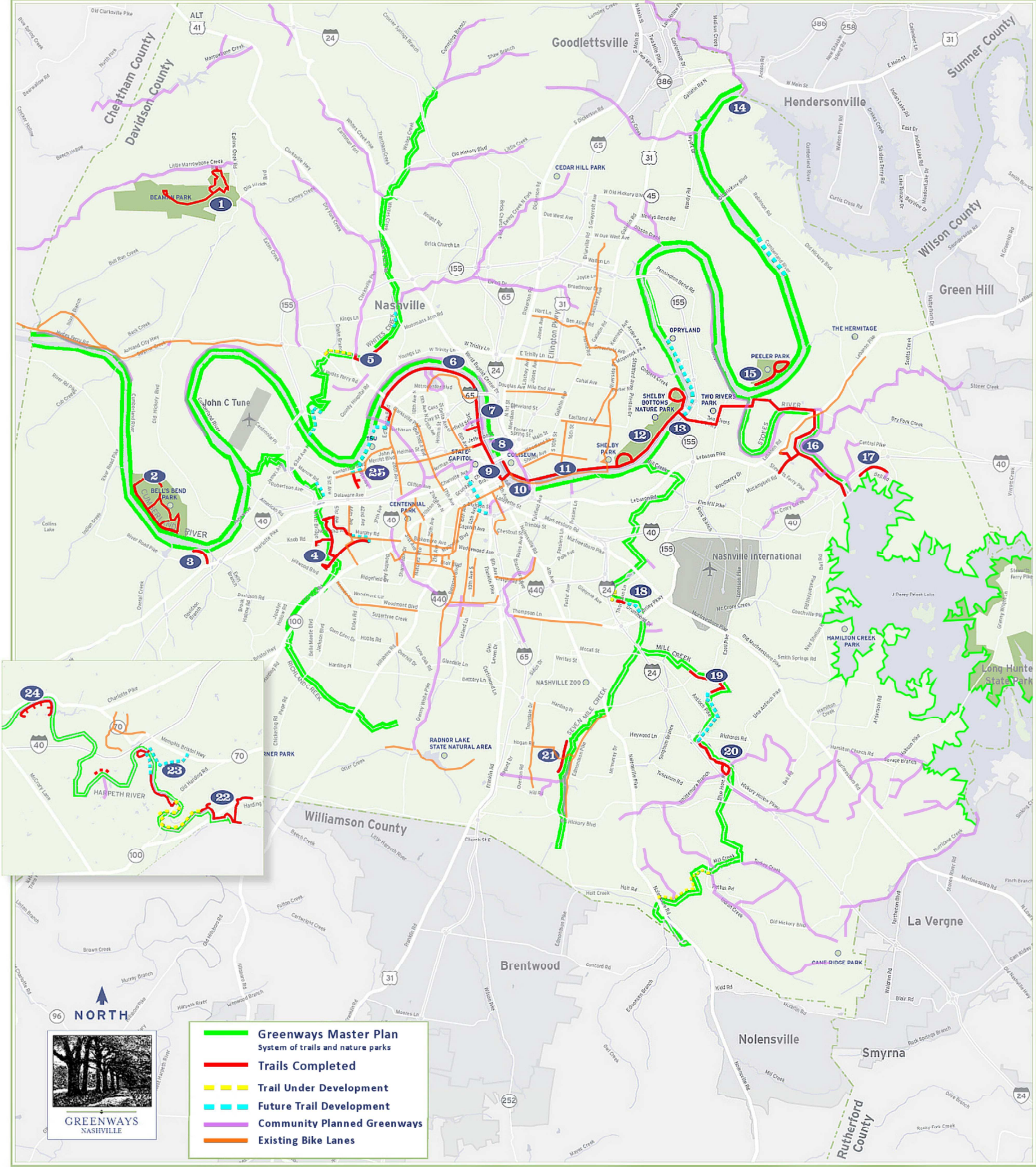


NASHVILLE'S GREENWAYS



- 1

Alvin G. Beaman Park
4111 Little Marrowbone Road
1500 acre nature park with hiking trails, picnicking and a nature center underway.
- 2

Bell's Bend Park
4107 Old Hickory Boulevard

800 acre nature and outdoor recreation park with soft surface trails, day camping, and a future outdoor education center.
- 3

Cumberland River: Brookmeade Park at Kelly's Point Battlefield
7002 Charlotte Pike
One-half mile paved trail leading to historic Civil War site, with river overlook, gathering plaza and athletic field.
- 4

Richland Creek Greenway
4601 Murphy Road
Two-mile paved trail connecting White Bridge Road, Cherokee Park, Sylvan Park, Nashville State Community College and McCabe Park areas.
- 5

Whites Creek Greenway
2801 Tucker Road
One-mile paved trail extending from Richard T. Hartman Park to Clarksville Pike.
- 6

Cumberland River: Metro Center Levee Trail
766 Freeland Station Road, Metro Center
Three-mile paved trail extending from Freeland Station Road to Great Circle Road, with river overlooks and public art features, now connecting to TSU campus from Freeland Station Road
- 7

Cumberland River: Downtown to MetroCenter Connector
1st Avenue North to Great Circle Road
One and one-half mile paved urban trail extending from the Riverfront Apartments Trail Plaza to the Great Circle Trailhead on the Metro Center Levee Trail.
- 8

Cumberland River: East Bank Greenway
50 Titans Way, Coliseum
One-half mile paved trail with river overlooks and public art.
- 9

Cumberland River: Downtown Connector
1st Avenue North at Gay Street
One-mile paved urban trail extending from Fort Nashboro and Riverfront Park to Tennessee Bicentennial Mall and Farmers Market, with gathering plazas and public art.
- 10

Cumberland River: Shelby Street Bridge
Shelby Street at Cumberland River
Pedestrian bridge linking downtown to east bank, with scenic overlooks, gathering plazas and public art.
- 11

Davidson Street Bicycle Connector
Metro Court House to Shelby Bottoms
3.75 mile bicycle route connecting Shelby Bottoms to downtown.
- 12

Shelby Bottoms Greenway and Nature Park
1900 Davidson Street
2032 Forrest Green Drive
2544 McGinnis Drive
810 acre nature park with 5 miles of paved trails, 5 miles of primitive trails, river overlooks, wetland observation platform, and new nature center.
- 13

Cumberland River: Pedestrian Bridge
Two Rivers Parkway at Cumberland River
Pedestrian and bicycle bridge to connect Shelby Bottoms and Stones River Greenways.
- 14

Cumberland River: Old Hickory Nature Trail
Cinder Road at Old Hickory Dam
One-half mile paved and one mile of primitive trails with boardwalk and wetland observation platform.
- 15

Peeler Park
2043 Neely's Bend Road
255 acre nature and outdoor recreation park with Cumberland River access and multi-use trails.
- 16

Stones River Greenway
J. Percy Priest Dam to Two Rivers Park
Ten-mile paved trail system linking Percy Priest Lake, Clover Bottom, Lebanon Road, Heartland Park and Two Rivers Park areas.
- 17

Alta Lake Trail
Dodson Chapel Road at Bell Road
One-mile paved trail connecting residential communities and Percy Priest Lake recreation area.
- 18

Mill Creek Greenway: Thompson Lane
Thompson Lane at Mill Creek
[Under development]
This one-mile trail will connect to Mill Creek Park and Wimpole Drive.
- 19

Mill Creek Greenway: Ezell Park
5135 Harding Place
One-mile paved trail with creek access.
- 20

Mill Creek Greenway: Blue Hole Road
5023 Blue Hole Road, Antioch
Two-mile paved trail linking Antioch Community Center and Middle School.
- 21

Seven Mile Creek
5301 Edmondson Pike
This half-mile paved trail extends along Seven Mile Creek from Whitfield Park at Ellington Agricultural Center and connects with a half-mile primitive trail along the creek as well as primitive trails throughout the Ellington complex.
- 22

Harpeth River Greenway:
Warner Park to Bellevue Exchange Club Athletic Complex
Warner Park at Highway 100, Bellevue

This one and three-quarter mile paved trail begins in Edwin Warner Park and follows the Little Harpeth and Harpeth Rivers through the Ensworth High School campus. The trail will connect to the Bellevue Exchange Club athletic complex after passing under Highway 100.
- 23

Harpeth River Greenway
Morton Mill Road, Bellevue
[Expansion underway]
One-mile paved trail with boardwalk and river overlook.
- 24

Harpeth River Greenway: Riverwalk
Riverwalk Subdivision - Newsom Station Road, Bellevue
One-mile of paved trail along the Harpeth River.
- 25

Tennessee State University to Boyd Taylor Park
(under development)
Two and one third-mile paved trail from Freeland Station through TSU campus to Boyd Taylor Park with four miles of soft and primitive trails.



Visit us Online!

Detailed information about each greenway is available with online maps. Consider supporting the county-wide greenway system by joining our not-for-profit member organization. Be a part of the progress as we advocate, educate, enhance, protect, and provide seed money for trail building grants.

www.greenwaysfornashville.org