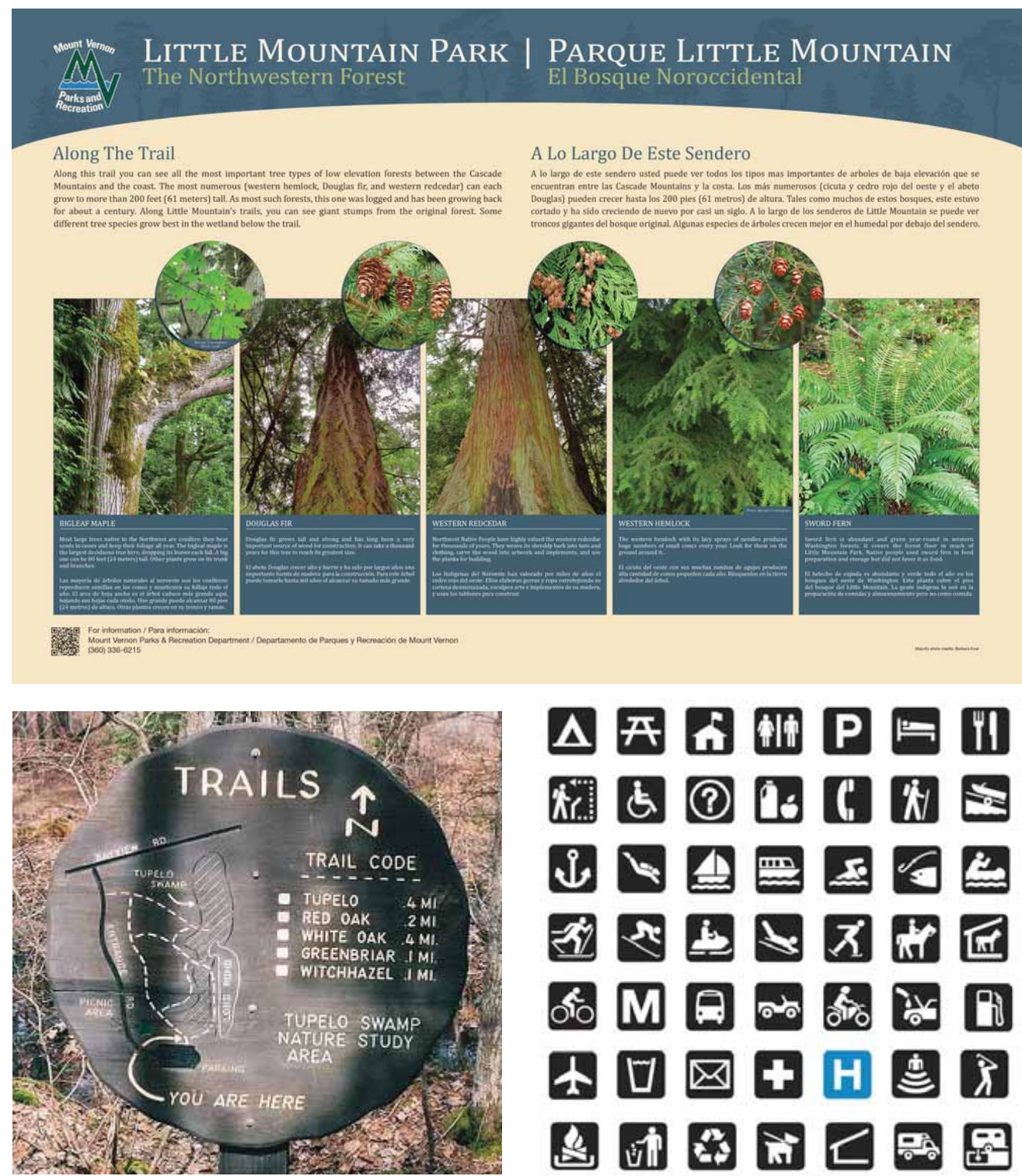
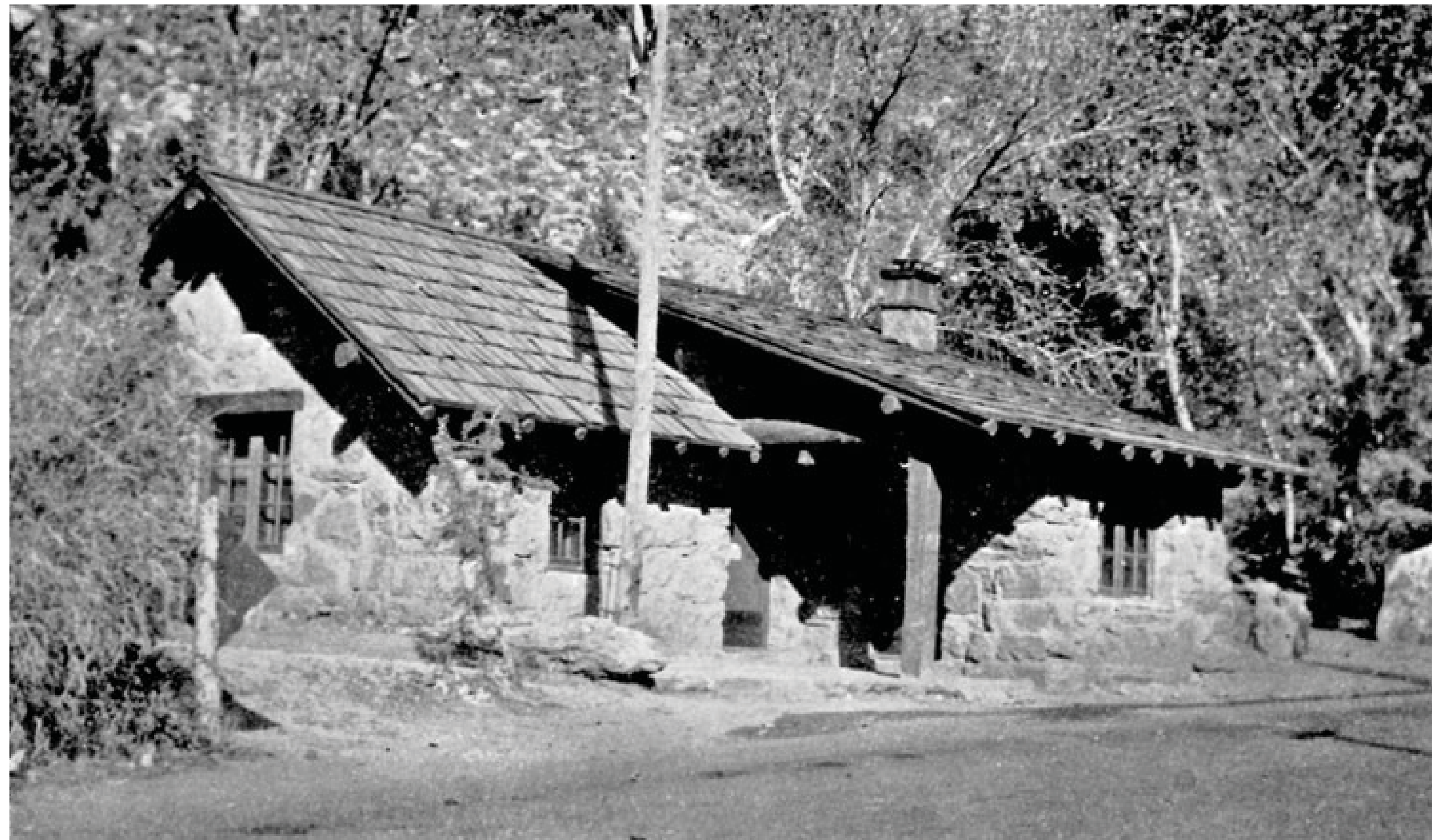
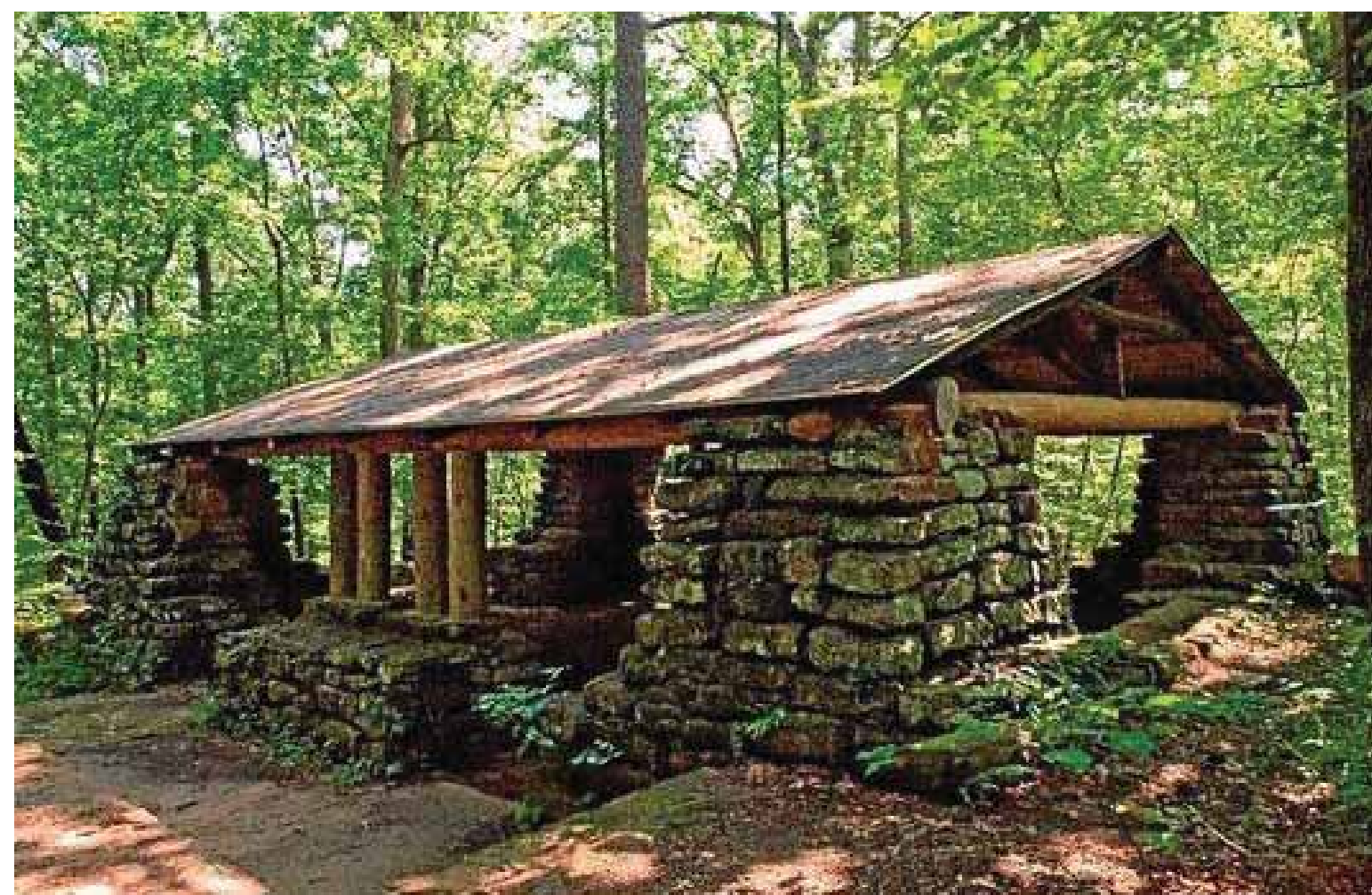


Kiosk at Oaks and East Fork Scenic Overlooks

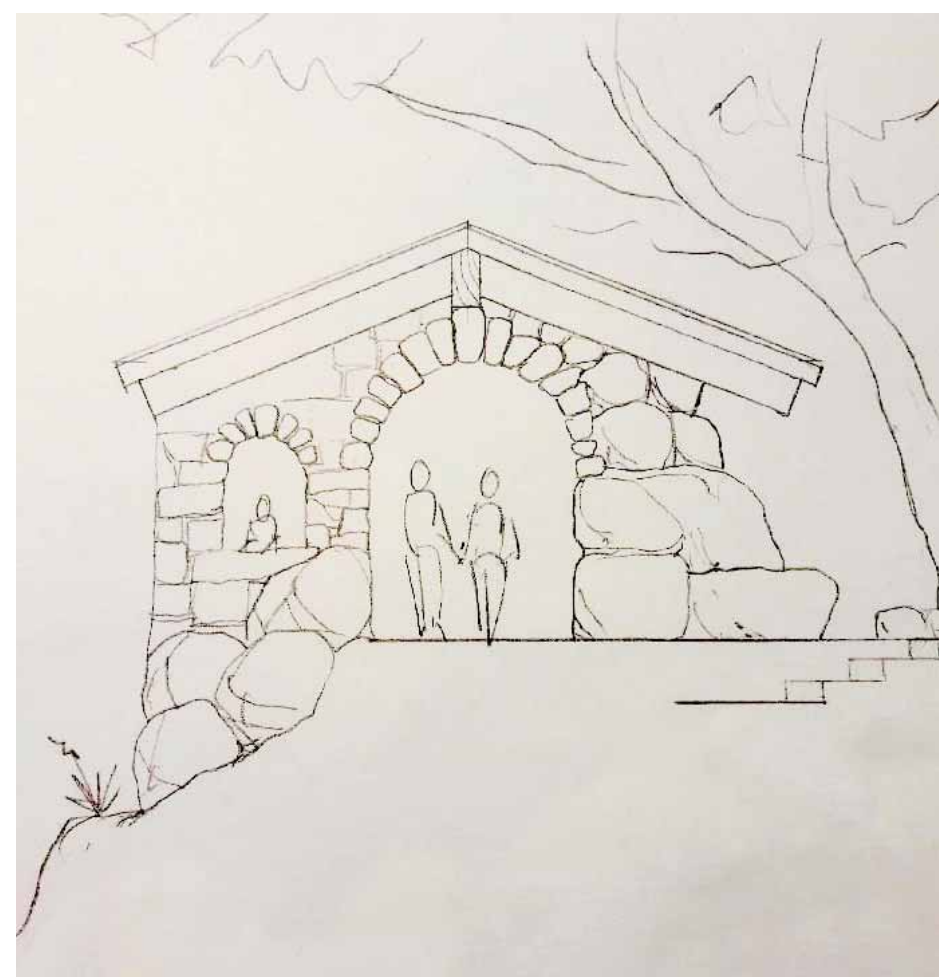
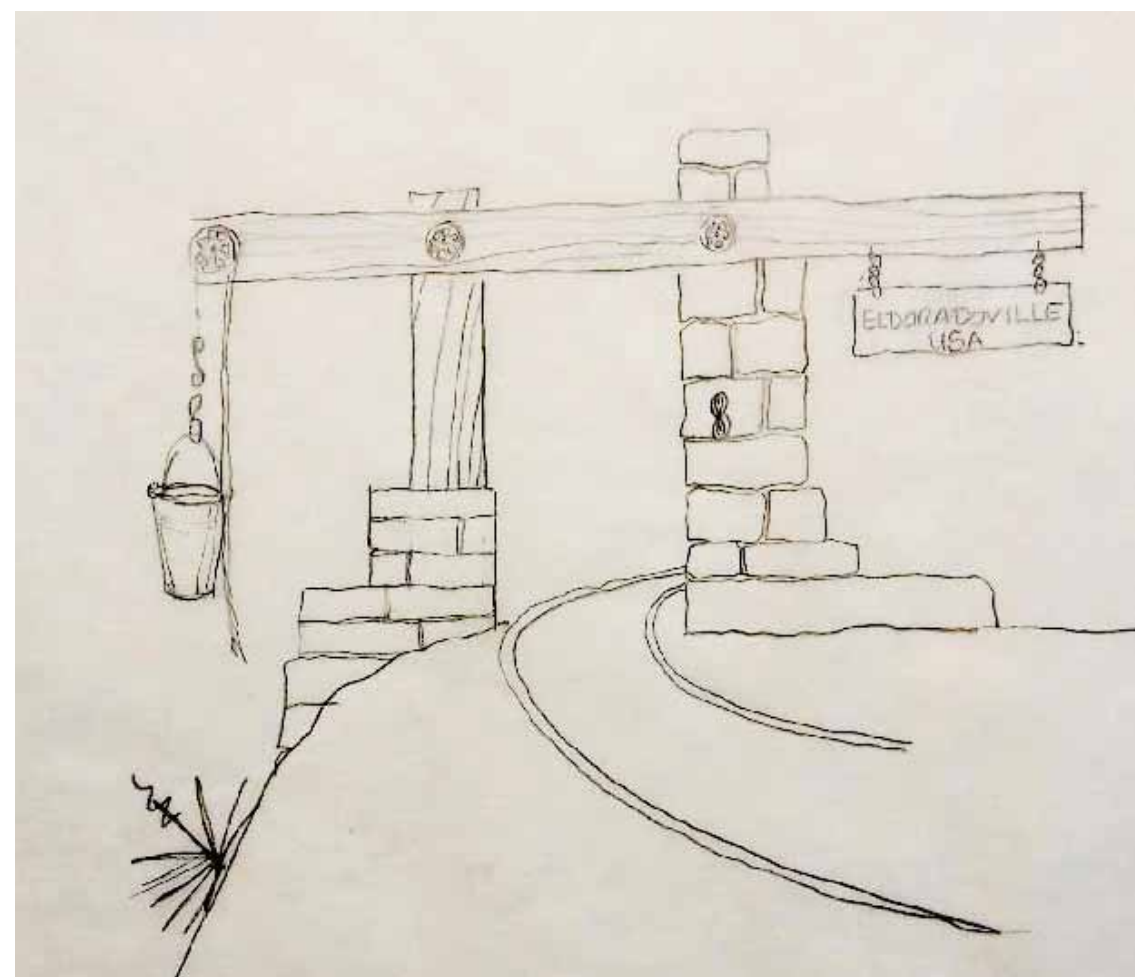


Bilingual and Symbol-based Signs



Interpretive Stone "Geology Hut" for East Fork Scenic Overlook

Artist-created Interpretive Signs



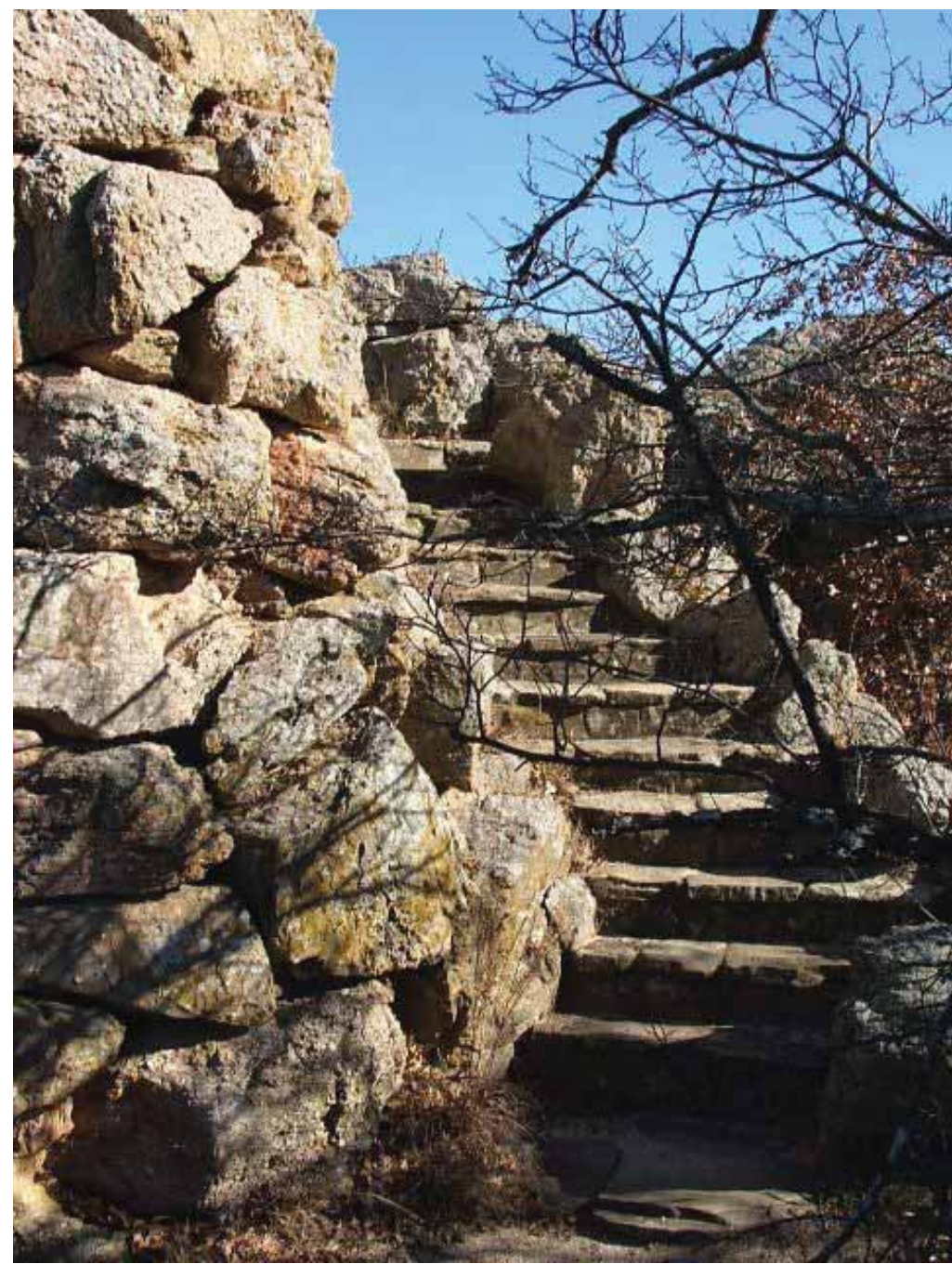
Restroom Building

Pedestrian Bridge at Cattle Canyon Creek

Arch Concepts for Eldoradoville Interpretive Overlook

SAN GABRIEL RIVER CONFLUENCE WITH CATTLE CANYON IMPROVEMENTS PROJECT

CONCEPT IMAGES



River Access Steps



Walls at Overlooks



East Fork Scenic Trail Walls



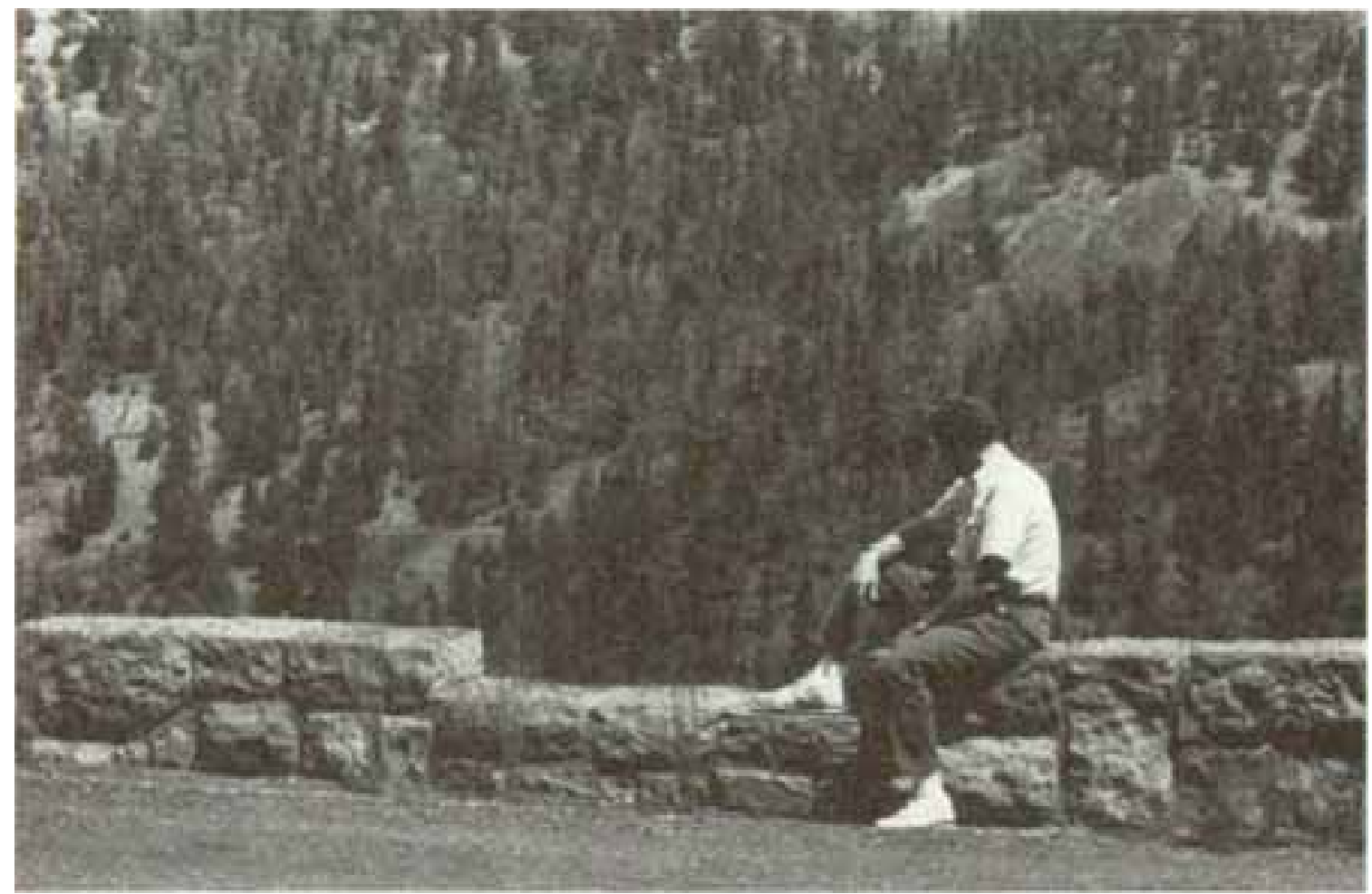
Stone Curbs and Rock Barriers



Accessible Paths of Travel



East Fork Scenic Trail Walls



Walls at Overlooks



Monument Signs



Parking