



SITE

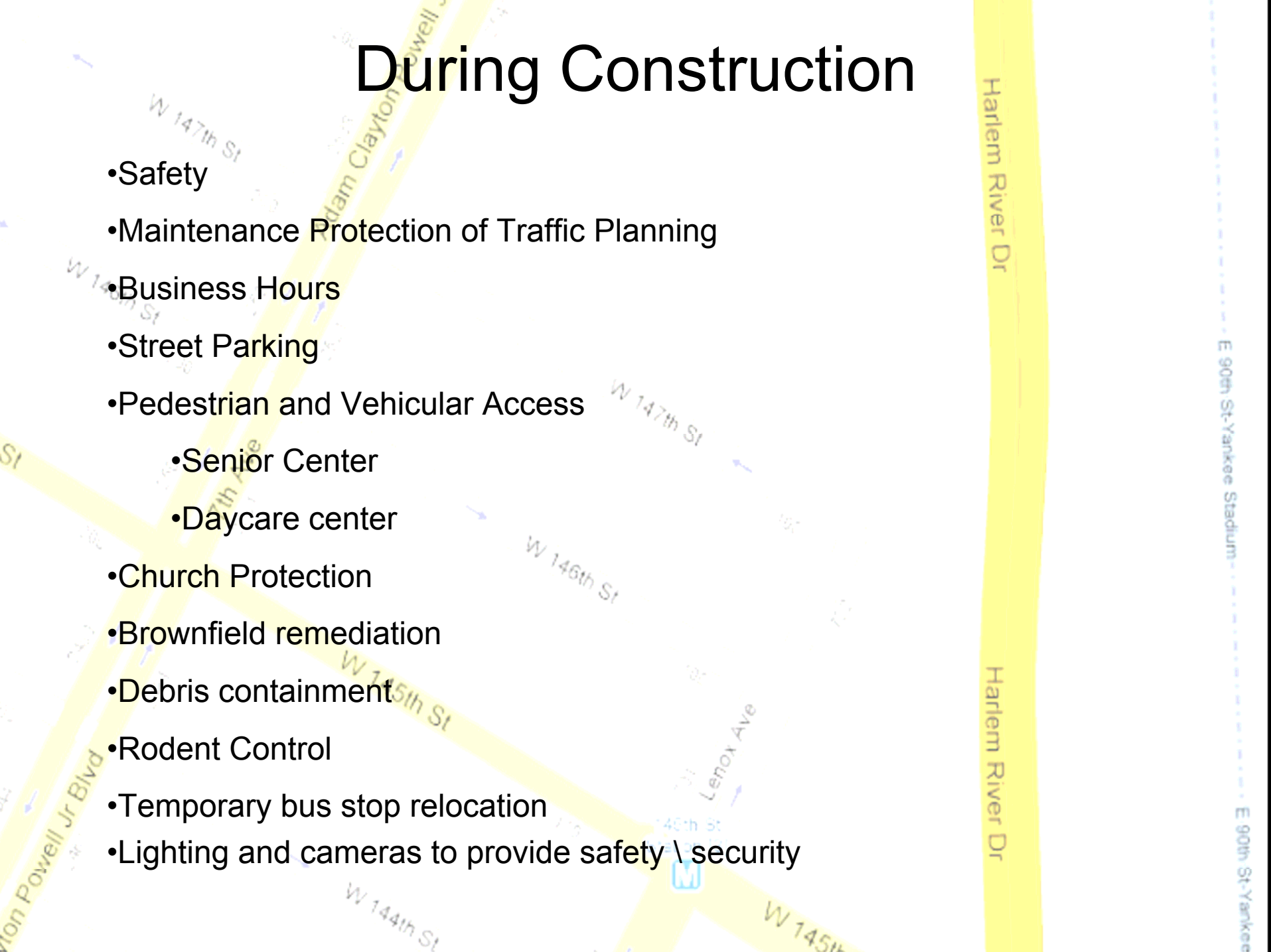
Break-out Session

Mother Clara Hale Bus Depot
Replacement

September 20, 2008

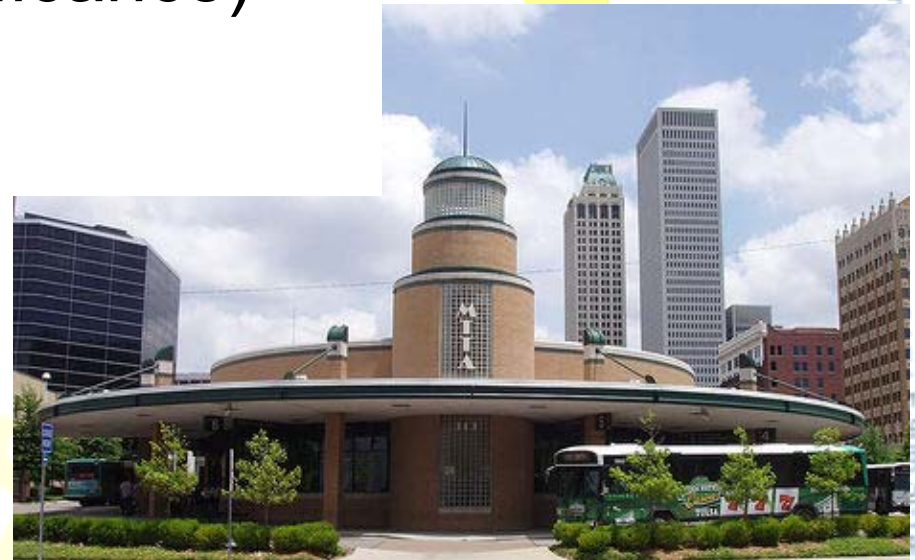
During Construction

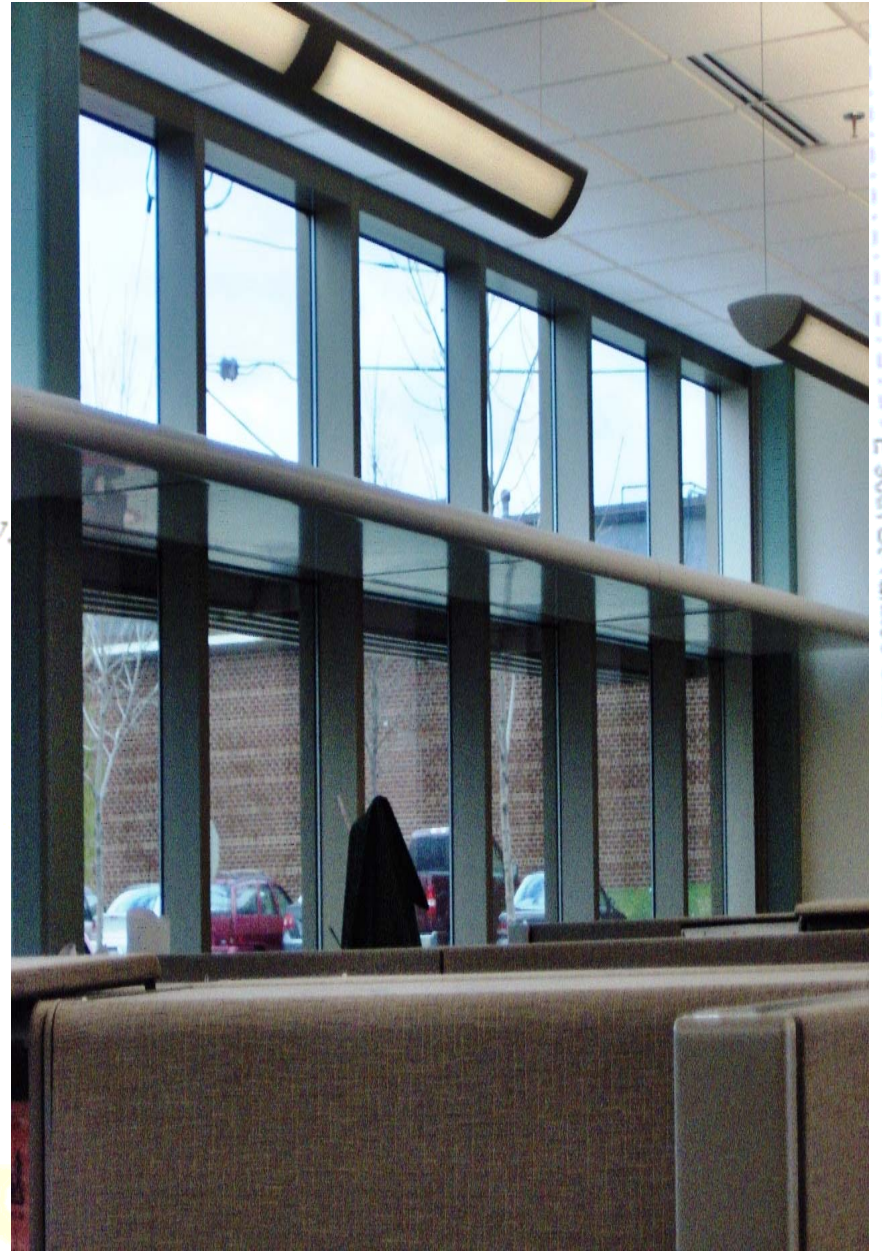
- Safety
- Maintenance Protection of Traffic Planning
- Business Hours
- Street Parking
- Pedestrian and Vehicular Access
 - Senior Center
 - Daycare center
- Church Protection
- Brownfield remediation
- Debris containment
- Rodent Control
- Temporary bus stop relocation
- Lighting and cameras to provide safety \ security



Aesthetics

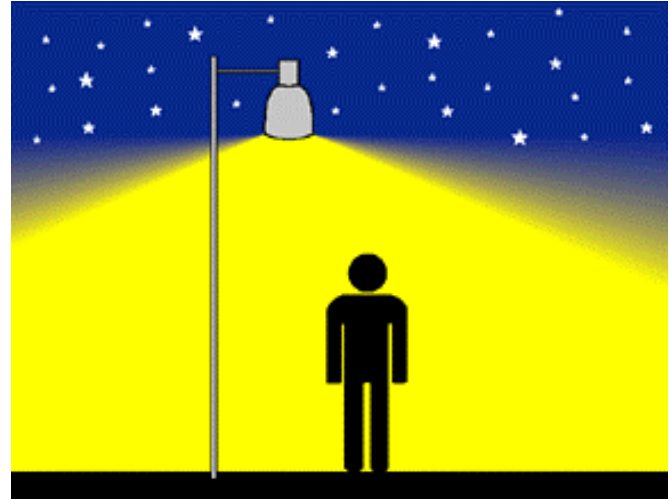
- Neighborhood integration
- Dynamic design
- Inter-modal transit hub
- Height
- Fenestration (Window design)
- Art work (Cultural Significance)
- Visitor Gallery





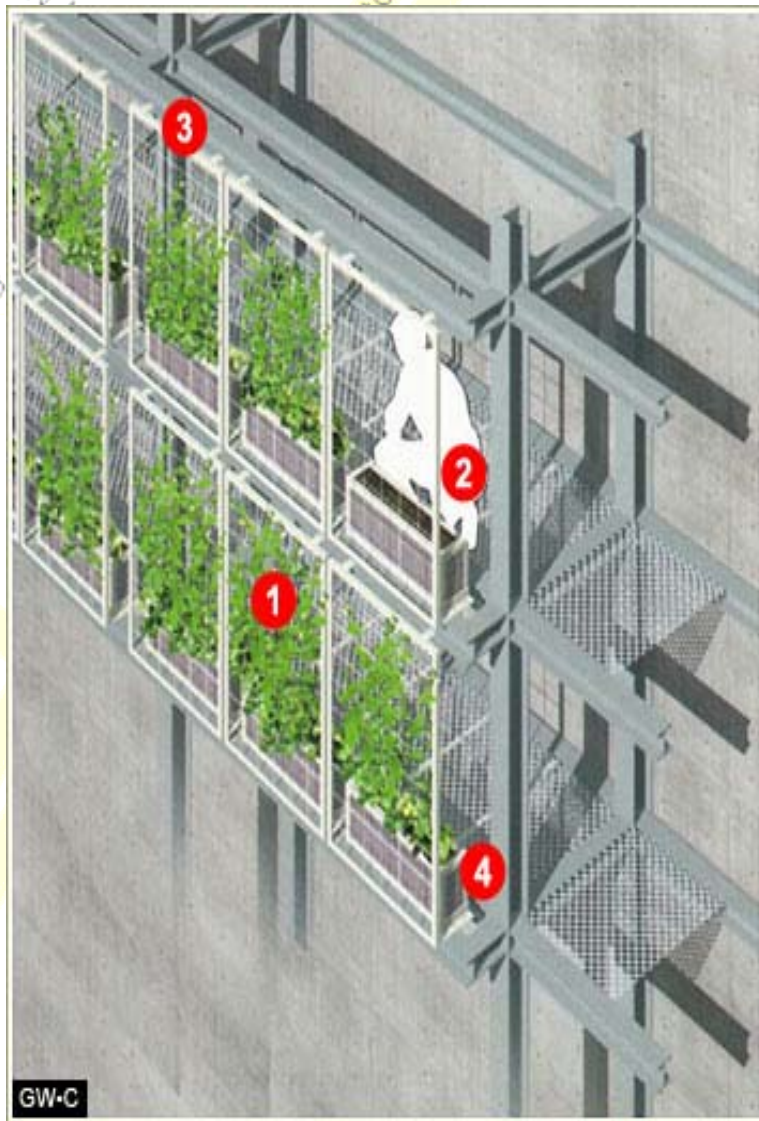
Safety and Lighting

- Pedestrian lighting
- No light trespass
- Dynamic lighting
- Security cameras



Landscaping

- Street trees
- Consider planters
- Modified green roof (community volunteers to maintain)
 - Allow for Photovoltaic and Rain water collection
- Consider appropriate street amenities (benches, bike racks)
- Work with other city agencies and community groups to beautify adjacent areas
- Consideration for the elderly and disabled due to neighborhood demographics



Arbor



Street trees

No Bus Idling

- If any bus idling PLEASE call:
 - (646) 252-5336
 - (718) 927-7499
 - (718) 330-3322