

Quarry blasting could send **contaminants** through the groundwater, and into the drinking water supplies of residents in Campbellville and parts of Milton

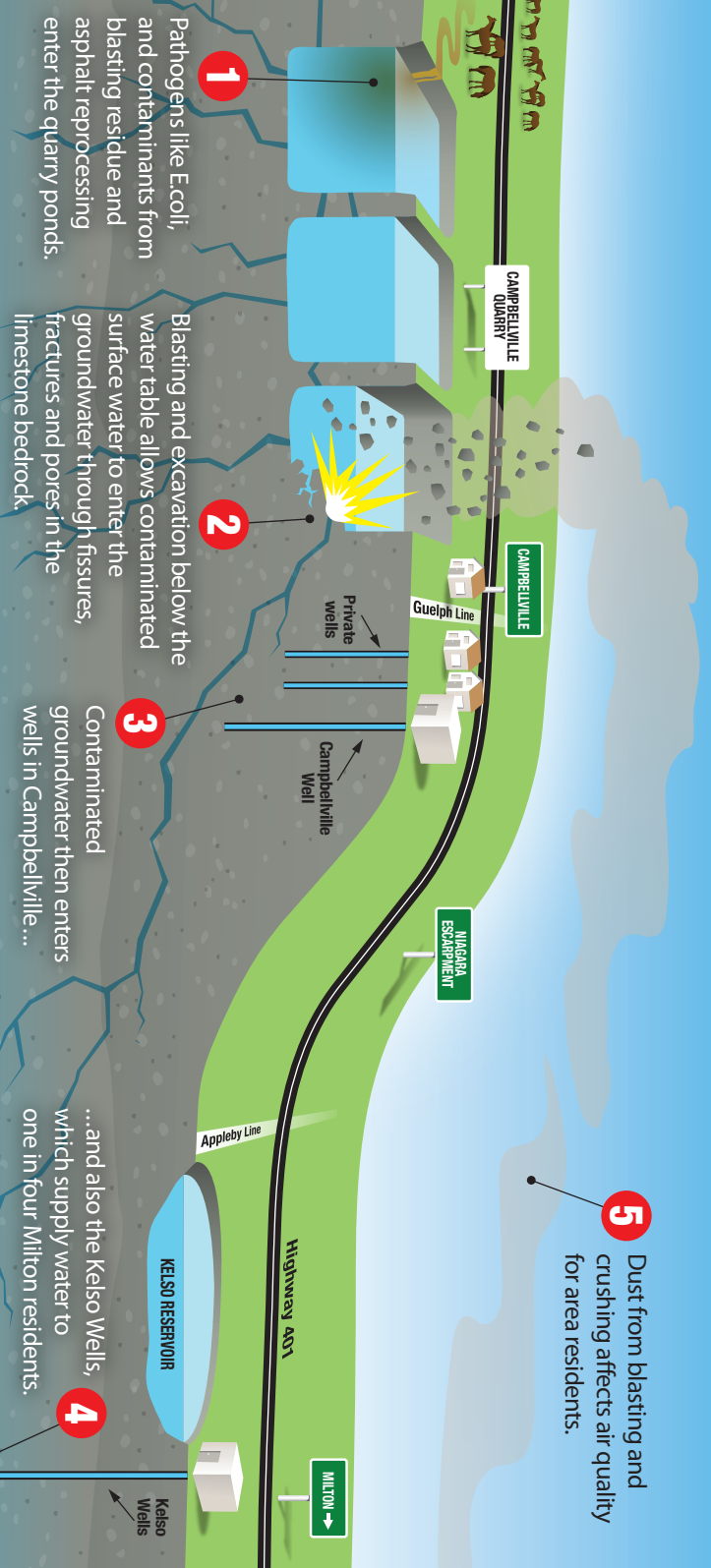


Illustration: Tony Biddle

TAKE ACTION NOW TO PROTECT DRINKING WATER

Tell Jeff Yurek, Minister of the Environment, to designate the proposed Campbellville Quarry for an Environmental Assessment.

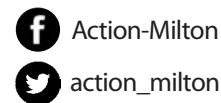
Contact Minister Yurek:

416-314-6790 • jeff.yurek@pc.ola.org

Find out more at
ACTIONMilton.ca

Join ACTION Milton

- Sign up for the newsletter
- Order a lawn sign
- Make a donation



PROTECT THE DRINKING WATER OF CAMPBELLVILLE AND MILTON RESIDENTS



Tell Jeff Yurek, Minister of the Environment, to designate the proposed Campbellville Quarry for an Environmental Assessment.

IMPORTANT:
James Dick Construction Ltd.'s proposal does NOT properly assess the risk to the drinking water of Campbellville residents and one in four Milton residents.

See inside for more information on the risks to residents and businesses ►

THE PROPOSED CAMPBELLVILLE QUARRY PUTS YOUR DRINKING WATER AT RISK!



James Dick Construction Ltd.'s (JDCL) request for an aggregate licence, proposed blasting, and construction of a new asphalt re-processing plant will threaten the quality of the water Campbellville and many Milton residents drink and the air we breathe.

JEFF YUREK, THE MINISTER OF THE ENVIRONMENT MUST AUTHORIZE AN ENVIRONMENTAL ASSESSMENT* OF THE PROPOSED CAMPBELLVILLE QUARRY.

25,000 people rely on the Kelso Wellfield for their drinking water. The proposed Campbellville quarry is located in the area that supplies water to Milton's Kelso wells and Campbellville.

Blasting can create pathways which could enhance transport of contaminants from the Campbellville quarry area into the groundwater which flows to Campbellville and Milton. Multiple reports from JDCL consultants state that there is a "hydraulic connection" between the quarry and Kelso aquifer.

Toxic chemicals or pathogens in groundwater may be costly or impossible to treat or remove. Contaminants could include:

- Nitrates and other residue from explosive blasting
- Chemicals from asphalt reprocessing on site
- Fuel from spills on the CP Rail Line or Highway 401
- Bacteria from farms, fields and septic systems

*An Environmental Assessment is a process to predict human health and environmental effects of a proposed activity **before** it is carried out.

AND IT'S NOT JUST DRINKING WATER

In addition to the risk to drinking water for Milton residents and community and private wells in Campbellville, quarry operations can affect air quality, produce flying rock and create traffic hazards, while producing little financial benefit to Milton.



Air Quality

Dust from drilling, blasting and crushing, and emissions from asphalt re-processing will pollute the air. Fine particulate matter (PM 2.5) can affect your health (asthma, respiratory disease, cancer, heart attacks), and even lead to premature death. Particulate matter, carried on prevailing winds from the Campbellville Quarry, can affect the air we breathe in Milton.



Traffic

Heavy truck traffic on local roads and Highway 401 will increase congestion, commute times, and potential for serious accidents and personal injury. At maximum production JDCL will add 60,000 trucks annually (at peak times, one truck every two minutes) to area roads and Highway 401. JDCL traffic consultants state the "material will be shipped to/from the east via 401", and further state "Hwy. 401 ramps to both Guelph Line and Reid Sideroad are currently operating at capacity".**

** JDCL Traffic Impact Study, June 2018



Flying Rock

Flying rock is rock fragments propelled through the air beyond the normal blast zone by explosives detonated to fragment the rock.

- Highway 401 is within 50 metres of the blast zone. Rock fragments could be ejected into moving traffic on the 401.
- CP Rail trains transporting fuel and chemicals are within 85 metres of the blast zone.

Help us force an environmental assessment of the proposed Campbellville Quarry. [SEE BACK PANEL](#)