

**20
21**

Westside Prize & DESIGN AWARDS



WESTSIDE PRIZE



LEGACY AWARD



9-YEAR CLIMATE CHALLENGE AWARD



DESIGN AWARDS

**WESTSIDE
URBAN
FORUM**

About Westside Urban Forum

Westside Urban Forum (WUF) is now in its third decade as the premier networking organization dedicated to discussions about land use issues that impact Los Angeles' Westside. Our monthly speaker series features good company and insightful speakers focused on lively debate about the future of our urban environment. As a group of architects, developers, planners, designers, and community members engaged in all facets of planning and development, we promote elevated policy discussions from multiple points of view.

Events

Through the COVID-19 pandemic, WUF has been holding monthly virtual panels. Once it is safe to do so, we will return to our breakfast series on the third Friday of each month. We can't wait to see you all in person again over breakfast burritos!

Board and Membership

WUF is run entirely by its volunteer board, all of whom are leaders, experts, and passionate urbanists in their respective fields. WUF offers individual, corporate, and nonprofit memberships. Membership confers access to special events, discounts on breakfast events, and more.

Sponsors

As an all-volunteer, non-profit organization, WUF relies on and appreciates its generous sponsors. Sponsors have no editorial influence but share our love of a good debate. WUF offers several sponsorship levels and provides sponsors with exposure to an influential audience of land use and real estate professionals and civic leaders.

For more information, please visit westsideurbanform.com or email info@westsideurbanforum.com.

Table of Contents

Letter from WUF Presidents	5
Letter from Westside Prize Event Chair	6
WUF Board Members and Westside Prize Committee Members	7
2021 WESTSIDE PRIZE AWARD	8
2021 JOHN LEIGHTON CHASE LEGACY AWARD	11
2021 9-YEAR CLIMATE CHALLENGE AWARD	13
2021 DESIGN AWARDS	16
Schools	17
Retail/Restaurant	20
Public/Open Space	22
Public/Institutional	23
Office	26
Multi-Unit Housing	29
Mixed-Use	34
Hospitality	39
Advertisements	40
Sponsors	43

Letter from our Presidents



Welcome to our first-ever virtual Westside Prize & Design Awards, where we celebrate people, projects, and ideas that have enhanced the built and natural environment of the Westside and Greater Los Angeles.

The impacts of COVID-19 have been felt by all of us, both personally and professionally, in nearly every industry and facet of our lives. These disruptions have been profound and are likely to continue to reverberate for years to come. At WUF, the disruption has been felt acutely. Traditionally, every month, WUF presents in-person discussions about land use matters that impact the Westside and the Greater Los Angeles region. Beyond our discussions – the information shared and the engagement of attendees – one of the true benefits of our programming was the camaraderie we formed during the regular convening of individuals who share an interest and passion for improving the lives of their cities and fellow citizens.



The absence of these in-person events – of that communal experience – has been felt by all of us. Though, like others, we have done our best to maintain continuity in an online setting, the lack of in-person, human interaction has left an unmistakable void.

Fortunately, this year's annual Westside Prize & Design Awards has been a much-needed salve. We won't lie – the work and coordination that goes into the planning of these events is massive. Each year, the hard work and extra hours are all made worthwhile on the day of the event, as we celebrate with our friends and colleagues the achievements of our community, together, in-person. This year, however, it has been through the planning and coordination that we've felt the greatest reward and sense of satisfaction.

In selecting our winners from the sea of deserving individuals, projects and ideas in Los Angeles, we've been reminded of the incredible resilience, creativity, and passion all around us. Our honorees reflect a deep commitment not only to education, public discourse, good-faith political will and science, but also a broad dedication to improving, and in many cases building, community.

This year, perhaps more than others, it feels particularly important and meaningful to be able to celebrate the achievements of talented people who have contributed to a Los Angeles that is more inclusive, more responsive to the needs of the public, and more community-oriented. It is an honor to be able to celebrate with all of you.

Sincerely,

Handwritten signatures of Ellen Castillo and Greg Rodgers in blue ink.

Ellen Castillo & Greg Rodgers, Co-Presidents, Westside Urban Forum

Letter from the Westside Prize Co-Chair



The Westside Prize Committee is overjoyed to celebrate the outstanding achievements by our 2021 Westside Prize Event award winners and to do so in company with our esteemed presenters. In addition to representing excellence in their respective fields, our awardees this year strike a common chord that resonates now more than ever. The values of and concerns for sustainability, accessibility, equity, and community are central to the projects and commitments we are recognizing today. Whether we are architects, planners, designers, developers, government officials, lawyers, or residents of the Westside, we have the privilege and responsibility to promote these values and build upon the groundwork laid by these visionary leaders to make the Westside and Los Angeles more livable and flourishing for all.

Emblematic of those values, this year's Westside Prize Award recognizes the culmination of a more than 20-year process to connect the Crenshaw District to the ocean with the Park to Playa Trail. The capstone of this project - the completion of the La Cienega Pedestrian Bridge - occurred at a most fitting moment this past year just when the outdoors, and places such as the Park to Playa Trail, became a saving grace for many of us Angelenos seeking social distance and fresh air. The greatest impact of this uninterrupted route is felt by the adjacent neighborhoods receiving much-needed, newfound access to recreation and beautiful open spaces.

For our John Leighton Chase Legacy Award, few people will leave a print on Los Angeles as prominently and positively as Phillip A. Washington. We are proud to celebrate Mr. Washington's service at LA Metro, rich with accomplishments that will continue to be central to Los Angeles's transportation system, transit-

oriented communities, and transportation workforce opportunities. LA Metro and transportation across LA County have a bright future thanks to Mr. Washington's widely impactful tenure.

This year is the 9-Year Climate Challenge Award, as we rapidly approach the deadline set by the United Nations to stop cataclysmic climate change. We are proud to honor Senator Fran Pavley for her lifelong commitment to addressing environmental sustainability issues, in particular climate change. Senator Pavley's accomplishments made California an exemplar in the country and the world on climate action.

The Westside Urban Forum is delighted you can join us for this special program and we are grateful for your support today and throughout the year with your patronage of our monthly events. We are especially thankful to our sponsors and WUF members, today's awardees and presenters, and we also send out a very warm welcome to any new folks in attendance. We hope you enjoy the program!

A handwritten signature in black ink, appearing to read 'Joe Eyen'.

Joe Eyen, Co-Chair, 2021 Westside Prize Awards

Westside Urban Forum Board Members

Ellen Castillo, Senior Land Use Planner, Akerman LLP, Co-President
Greg Rodgers, Vice President, JERDE, Co-President
Adam Christian, Senior Vice President, Ernst & Young
Joe Eyen, Head of Government Relations, FlixBus, Inc.
David Ewing, Community Activist
Ellen Isaacs, SORO Affordable Housing Initiative
Kyle Jenkins, Assistant Vice President, LOWE
Andrea Korb, Economic Development Manager, Downtown Santa Monica, Inc.
Laura Krawczyk, Planning & Development Manager, City of Los Angeles
Wells Lawson, Senior Director, Joint Development, Metro
Michele McGrath, Planner, City of Beverly Hills (retired)
Chris Rhie, Associate Principal, Buro Happold | Cities
April Sandifer, Program Manager, South Los Angeles Transit Empowerment Zone (SLATE-Z)
Josh Stephens, California Planning & Development Report, Immediate Past President
Judith Taylor, Partner, HR&A Advisors, Inc.
Natalie Teear, Vice President, Sustainability & Social Impact, Hudson Pacific Properties
Brooke Walbuck, Director of Business Development, HKS
Suzi Paine, Administrative Director for the Westside Urban Forum

Westside Prize Committee Members

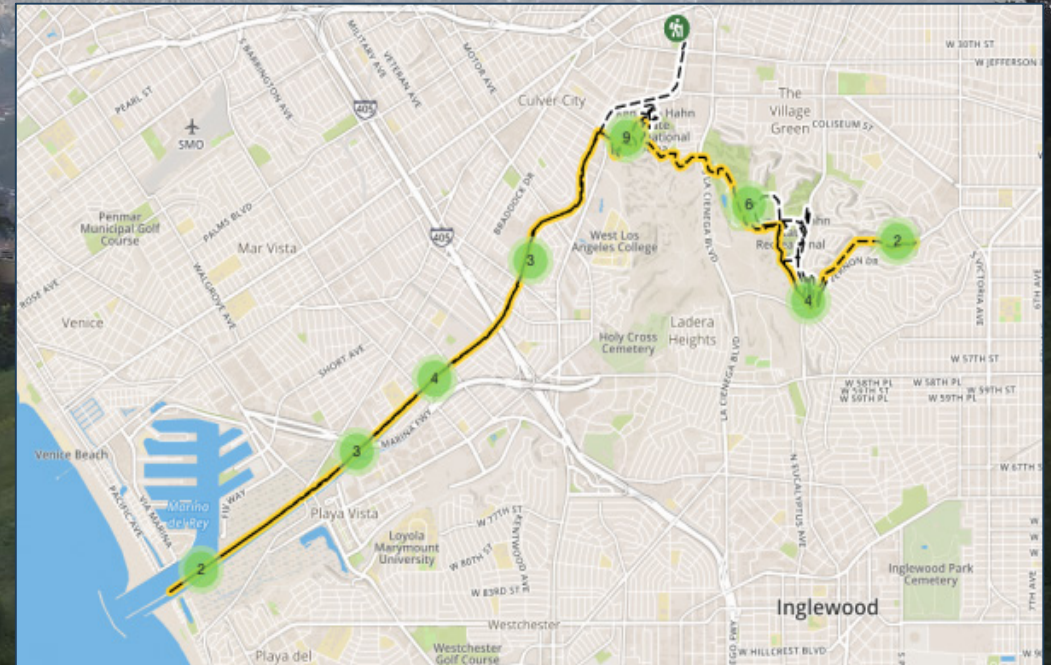
Joe Eyen, Westside Prize Co-Chair
Ellen Castillo, Westside Prize Co-Chair
Ellen Isaacs, Westside Prize Advisor and Award Coordinator
April Sandifer, Westside Prize Award Coordinator, Sponsorship Coordinator
Wells Lawson, Legacy Award Coordinator
Laura Krawczyk, Legacy Award Coordinator
Josh Stephens, Climate Challenge Award Coordinator
Michele McGrath, Planning Committee
Brooke Walbuck, Planning Committee
Andrea Korb, Program Coordinator
Greg Rodgers, Design Awards Co-Chair
Natalie Teear, Design Awards Co-Chair

Special Event Assistance

Natalie Dalton, Design Awards Coordinator
Hanh Nguyen, Running Reel Films
Jeff Enzor, Graphic Design
Kira Walker, Graphic Design

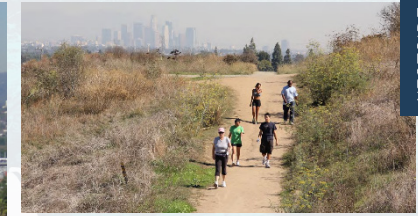
2021 Westside Prize Award

Park to Playa Trail





PARK TO PLAYA TRAIL



With our annual Westside Prize, WUF recognizes and honors built or in-progress projects, programs, policies or academic studies that transform Los Angeles communities for the better. This year's Westside Prize winner is the Park to Playa Trail, a roving 13-mile hiking and biking path that connects a network of trails, parks and open spaces in the Baldwin Hills, along Ballona Creek, and all the way to the Pacific Ocean. With sweeping views of Los Angeles, and parklands, wetlands and coastal habitat, the Trail provides South Los Angeles with access to green space and connects Angelenos with nature and each other.

The Baldwin Hills neighborhoods include Culver City, Fox Hills, Blair Hills and Ladera Heights on the west, and Baldwin Vista, Baldwin Village, Baldwin Hills, West Adams, Jefferson Park, Crenshaw, Leimert Park, Inglewood, View Park and Windsor Hills to the east and south. The Baldwin Hills Master Plan, conceived by the Baldwin Hills Conservancy led by David McNeill, and researched for the California Department of Parks & Recreation in 1998, explains the significance of the area to the Los Angeles region:

"The Baldwin Hills are a natural oasis in the middle of a densely urbanized area, providing a refuge for both wildlife and people. Over one million people live within five miles of the Baldwin Hills, and, with barely one acre of parkland per 1,000 people, this is one of the most park-poor regions in California."

The Baldwin Hills have been used for oil and gas development since the early 1900s, and numerous roads, oil wells, processing units and other oil and gas infrastructure cover the remaining 950 acres. While these operations will remain as long as oil production is economically feasible, it is anticipated that the land in the Baldwin Hills will become available for park acquisition and development over time. The Baldwin Hills Park Master Plan sets forth a comprehensive vision for improvement and restoration of these lands, so that over time a balance between active recreation, natural habitat and community facilities can be achieved."



Slowly, step-by-step, the fulfillment of the Master Plan is being realized with the completion of the Park to Playa Trail in October 2020. Among projects still to come are the complete restoration of the Ballona Creek watershed and the gradual acquisition and conversion of decommissioned oil fields to other uses, which could add 950 acres to the parklands envisioned in the Master Plan.

David McNeill has led the Baldwin Hills Conservancy, a small state agency, for over 20 years. The value he places on public service to make Los Angeles a better place led him to a career devoted to protecting open space where wildlife and habitat can thrive, and providing surrounding communities with places for relaxation and recreation in the midst of urban commotion. David has done the hard work of bringing stakeholders with differing interests together to maintain and manage this last large piece of open space in Los Angeles County.

He will be the first to acknowledge the role of many people, agencies and groups in moving this project forward, with a special nod to former Supervisor Mark Ridley-Thomas, now a City Councilmember, and Holly Mitchell, former State

Senator and current Supervisor. WUF is proud to honor the Park to Playa Trail and recognize David's pivotal role in making it a reality.

The 2021 Westside Prize Award for the Park to the Play Trail is being presented to and accepted by David McNeill, Executive Director of the Baldwin Hills Conservancy, in recognition of the project's excellence in community-building by providing equitable access to coastal habitats and green space, while connecting Angelenos with nature and each other.



Presented by:
Mark Ridley-Thomas
Los Angeles City Councilmember

2021 John Leighton Chase Legacy Award

Phillip A. Washington





PHILLIP A. WASHINGTON

Phillip A. Washington served as the Los Angeles County Metropolitan Transportation Authority's Chief Executive Officer from April 2015 to May 2021. As the CEO of Metro, he led an agency that runs the United States' third-busiest transit system with 2,200 clean air buses, six rail lines covering 98 miles, and four additional rail projects in construction.

Washington was instrumental in the 2016 effort to pass Measure M – a half-cent sales tax in L.A. County – that is helping to build 40 major highway and transit projects over the next 40 years and transforming mobility and access in Los Angeles County. Measure M is the largest modern public works program in North America and includes new rail and bus rapid transit lines, as well as highway, active transportation, state of good repair maintenance, and local transportation projects for LA County's 88 cities. The historic effort will create 778,000 jobs and provide \$133.3 billion in economic impact for the region.

Prior to his time at Metro, Washington had a distinguished career in the military, retiring as a disabled veteran with 24 years of service in the United States Army. He held the rank of command sergeant major, the highest position a non-

commissioned officer could achieve. Originally from the South Side of Chicago, Washington holds a B.A. in Business Administration from Columbia College and an M.A. in Management from Webster University.

The Westside Urban Forum is proud to give the Legacy Award to Phil Washington for the leadership he has provided to Los Angeles at a pivotal moment in its history. This Award honors his deep commitment to ensuring that every aspect of Metro's planning, construction, and operation of our growing county-wide multi-modal transportation system, transit-oriented housing communities, and transportation workforce opportunities, is focused on equitable access for all Angelenos.

Presented by:
Eric Garcetti
Mayor of the City of Los Angeles



2021 9-Year Climate Challenge Award

Fran Pavley





FRAN PAVLEY

Named for the United Nations timeline to stop cataclysmic climate change, the 9-Year Climate Challenge Award honors policies and programs that reduce the human causes of rising temperatures and severe weather events. This award is renamed each year to highlight the growing urgency of this issue. Next year, it will be the 8-Year Climate Challenge counting down to the year 2030.

This year's award winner began fighting against environmental degradation on the Westside and climate change globally long before the United Nations started the 12-year clock. Born and raised in Los Angeles, Fran Pavley was elected the first mayor of Agoura Hills in 1982 and went on to serve 14 years in the California Assembly and the State Senate, representing portions of the Westside and Conejo Valley, for a grand total of 29 years in elected office. Her landmark climate policies, including AB 1493, AB 32, and SB 32, and others, have created a market for innovation and investment in clean energy and vehicles, helping to clean our air, grow the economy, and reduce greenhouse gas emissions.

As chair of the Senate's Natural Resources and Water Committee, Senator Pavley was instrumental in the passage of the state's first sustainable Groundwater Management Act, to halt overdrafting on groundwater. This has resulted in implementation of policies that protect our ocean and watersheds and adoption of measures to create more sustainable local water supplies - all of which serve as a buffer against drought and climate change and contribute to reliable water supplies regardless of weather patterns in the State.

Pavley authored and campaigned for Assembly Bill 32: The Global Warming Solutions Act of 2006, which called for the state to curb its carbon emissions by 15% per capita compared to 1990 levels by 2020 and 80% by 2050. Signed by then-Governor Arnold Schwarzenegger, AB 32 was, and arguably still is, the strongest anti-greenhouse gas regulation outside of Europe. Subsequent legislation has built on its progress, including SB 375 and SB 743, both of which promote compact land use to reduce vehicle use, and an array of clean-energy initiatives. AB 32 also gave rise to the state's cap-and-trade program.



As ambitious as Pavley's goals may have seemed in 2006, they are coming to fruition, as the state has met the 2020 targets and makes progress toward the 2050 targets. Pavley continues her work today as Environmental Policy Director at the USC Schwarzenegger Institute. She also serves on several state and local boards and committees.

The Westside Urban Forum is proud to honor Senator Fran Pavley with the 9-Year Climate Challenge Award to recognize her pioneering legislative achievements that enable Californians to address root causes of climate change and promote a sustainable future for all Californians.

Presented by:
Matt Petersen
President & CEO, L.A. Cleantech Incubator



2021 Westside Prize

Design Awards Jury Members



Thomas Small
CEO, Culver City Forward



Gwynne Pugh
Principal, Gwynne Pugh Urban Studio



Deborah Richmond
Principal, Grimshaw

20
21

Westside Prize & DESIGN AWARDS

MERIT

SCHOOLS

WESTSIDE
URBAN
FORUM



LAFAYETTE PARK AFTER SCHOOL PROGRAM FACILITY (BUILT)

Executive Architect (Site): Berliner Architects

Executive Architect (Building): EPI

Design Architect (Building and Site): Berliner Architects

Owner/Developer: Heart of Los Angeles

Landscape Architect: Office of the Designed Landscape

Interior Designer: Berliner Architects

Civil & Structural Engineer: Brandow and Johnston

M/E/P Engineer (Site): Design West Engineering

General Contractor: Balfour Beatty

HOLA Design Team: David Dalton, Nara Hernandez,
Mitchell Moore, David Mauricio

Photography: Tom Bonner

JURY NOTES:

"We love the fungible quality between indoor and outdoor space; the mashing of the containers creates interspace."

"The containers are well deployed; using them creates a certain intrigue to the experience of the buildings while serving the program perfectly. It feels very generous spatially. "

"There's a very good connection to the outdoors, and [the containers'] placement in the park feels appropriate."

20
21

Westside Prize & DESIGN AWARDS

CITATION

SCHOOLS

WESTSIDE
URBAN
FORUM



CRENSHAW CHARTER MIDDLE SCHOOL (BUILT)

Architect & Interior Designer: Berliner Architects

Owner/Developer: Bright Star Schools

Landscape Architect: Office of the Designed Landscape

Structural Engineer: IMEG

Civil Engineer: Rhyton Engineering

M/E/P Engineer: AMA Consulting Engineers

General Contractor: Consolidated Contracting Services

Project Managers: Pacific Charter School Development

Photography: Tom Bonner

JURY NOTES:

"Given the challenging budgets for school facilities, it was really well executed. The money was spent wisely."

"What's interesting is the way they use the property as a collaborative place for the community and the school - that is a direction that we need to go in to facilitate the highest use of our properties."

"The spaces seem very inviting, the finishes are high-quality, it's a great addition to the neighborhood, and an asset to the community."

20
21

Westside Prize & DESIGN AWARDS

CITATION

SCHOOLS

WESTSIDE
URBAN
FORUM



SANTA MONICA HIGH SCHOOL PHASE 3 (IN-PROCESS/UNBUILT)

Design Architect: Moore Ruble Yudell Architects and Planners

Executive Architect: HED

Owner/Developer: Santa Monica-Malibu Unified School District

Landscape Architect: Pamela Burton & Company

Interior Designer: Moore Ruble Yudell Architects and Planners & HED

Structural Engineer: Saiful Bouquet Structural Engineers

Civil Engineer: Kimley Horn

M/E/P Engineer: HED

General Contractor: McCarthy Builders

Educational Programming: BrainSpaces

Construction Manager: Kitchell Element

Cost Consultant: OCMI

Acoustic Consultant: Waveguide

Renderings: Moore Ruble Yudell Architects and Planners

JURY NOTES:

"Architecture that rises to the level of good community college design. A cut above for a public high school."

"This will be a spectacular high school. There's interaction and this is a place where happenstance can happen. It feels community-like, in that it's not defined by any one activity."

"There's an interplay of the various paradigms; of teaching, learning, and placemaking. It's like an incubator in education and learning. It connects to what community is, in a creative environment such as Santa Monica."

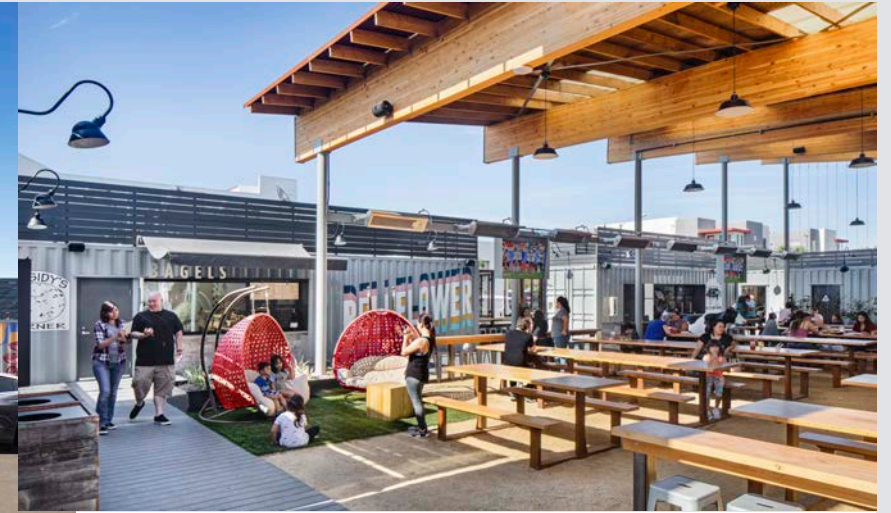
20
21

Westside Prize & DESIGN AWARDS

MERIT

RETAIL / RESTAURANT

WESTSIDE
URBAN
FORUM



STEELCRAFT BELLFLOWER (BUILT)

Architect: Studio One Eleven

Owner: City of Bellflower

Developer: SteelCraft Long Beach C/O Howard CDM

Structural Engineer: R&S Tavares Associates, Inc.

Civil Engineer: John Labib + Associates

Mechanical Engineer: K&S Air Conditioning, Inc.

Electrical Engineer: SCG Electric

Plumbing: Major League Plumbing

Photography: Studio One Eleven

JURY NOTES:

"This one is cool and very much part of the texture of its environment. Bellflower is an important place to have a project like that. It's an oasis."

"It looks like it's really responding well to the street, not like it was just plopped down, it feels natural to the community - like it would grow there."

"The scale and materials are right on target with what's on the neighboring blocks, there's a very economical use of materials. We like the punctuation of shapes, the roof shade structure. Nice modulation."

20
21

Westside Prize & DESIGN AWARDS

CITATION

RETAIL /
RESTAURANT

WESTSIDE
URBAN
FORUM



FREEDOM PLAZA (BUILT)

Architect: Nadel Architects, Inc.

Owner & Developer: Primestor Jordan Downs, LLC

Landscape Architect: Fong Hart Schneider

Structural Engineer: ANF & Associates

Civil Engineer: Fuscoe Engineering

M/E/P Engineer: Henderson Engineers, Inc.

General Contractor: VCC General Contractors

Lighting Design: Francis Krahe & Associates

JURY NOTES:

"This is big and bold, and much needed. We want to reward the team that brought it to life. They did it! "

"It has great features like outdoor seating and water features, and appears very walkable.

"A fun commercial project that has a great community feel. It's an urbanistic achievement."

20
21

Westside Prize & DESIGN AWARDS

MERIT

PUBLIC /
OPEN SPACE

WESTSIDE
URBAN
FORUM



DESTINATION CRENSHAW (IN-PROCESS/UNBUILT)

Architect: Perkins & Will

Owner: Destination Crenshaw

Landscape Architect: Studio-MLA

Civil & Structural Engineer: KPFF

Electrical/Plumbing Engineer: Syska Hennessy Group

General Contractor: PCL Construction

Associate Architect: RAW International

Lighting Designer: Francis Krahe Associates

Exhibit Designer: Gallagher & Associates

Renderings: Perkins & Will

JURY NOTES:

"This is a very impressive project, and the team took on a big challenge. They've created an outdoor park that will function like a museum; with incredible public art and a gathering place for the community."

"The graphics, the stargrass symbolism for the Black community, were beautifully conceived and carried through the project in a meaningful way. The details and different parts all come together amazingly as a unique, community-oriented monument."

"The raised park overpass near Leimert Park station acts as a pivot point, visible from both directions, a beacon for the neighborhood. It is a unifying project and shows the value of design within the community."

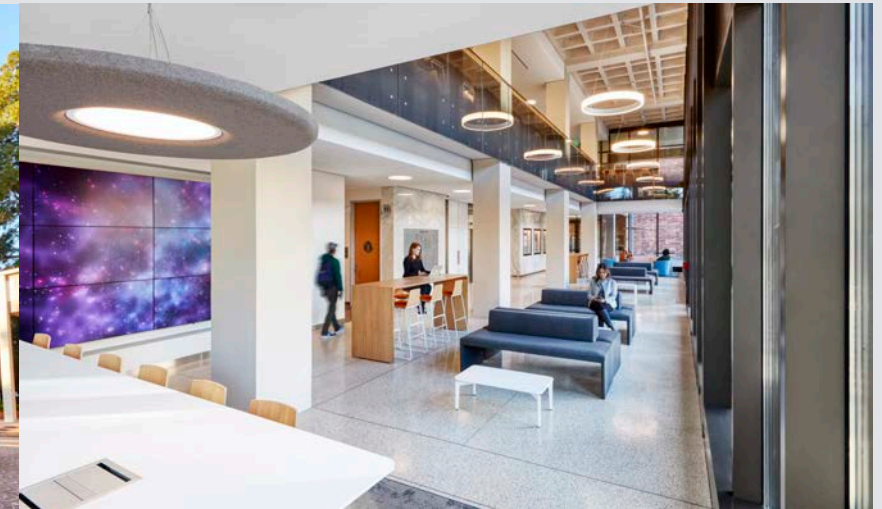
20
21

Westside Prize & DESIGN AWARDS

MERIT

PUBLIC /
INSTITUTIONAL

WESTSIDE
URBAN
FORUM



UCLA PRITZKER HALL MODERNIZATION (BUILT)

Architect & Interior Designer: CO Architects

Owner: University of California, Los Angeles

Landscape Architect: Studio-MLA

Civil & Structural Engineer: KPFF Consulting Engineers

M/E/P Engineer: Affiliated Engineers, Inc.

General Contractor: Rudolph and Sletten

Lighting: KGM Architectural Lighting

Acoustical: Waveguide

Environmental Graphics: SKA Design

Photography: Kim Rodgers

JURY NOTES:

"The idea of rehabilitating an existing structure is important; recognizing the whole concept of embodied energy and not blowing it all away and starting from zero again."

"They really carved out some great space out of the existing building. The move to create an open second story was brilliant. They've taken all the bits that were good about the building and worked with it - and what was not good about the building they've gotten rid of."

"It reads and feels like an extremely contemporary building, when these old buildings aren't easy to love. As an architect you really have to use your imagination to repair the errors of the architecture. There is a beauty in their listening. It's very impressive, and it could be a model modernization of a classic building."

20
21

Westside Prize & DESIGN AWARDS

HONOR

PUBLIC /
INSTITUTIONAL

WESTSIDE
URBAN
FORUM



BILLIE JEAN KING MAIN LIBRARY (BUILT)

Architect & Interior Designer: Skidmore, Owings & Merrill

Owner: City of Long Beach

Developer: Plenary-Edgemoor Civic Partners

Landscape Architect: Gustafson Guthrie Nichol

Structural Engineer: Skidmore Owings & Merrill

Civil Engineer: KPFF Consulting Engineers

M/E/P Engineer: Syska Hennessy Group

General Contractor: Clark Construction Group

Operations and Maintenance: Johnson Controls

Library Programming: Linda Demmers

Lighting: HLB Lighting Design

Acoustics: Newson Brown Acoustics

Fire/Life Safety: Jensen Hughes

Vertical Transportation: Syska Hennessy Group

Roofing/Waterproofing: Curtainwall Design Consulting

Wood Scientist: Ron Anthony

Parking: International Parking Design

Photography: Benny Chan/Fotoworks

JURY NOTES:

"This is a beautiful, wonderful piece of architecture that is uplifting. It was also designed at the right time, it's a throwback to being about the books. It does that at the same time as being up-to-the-minute."

"We love the very transparent quality that it has. It has an almost ethereal quality, it sits gently, while still being very much an institutional building. We like the scale too; it's big, it feels like it can absorb a lot of people."

"It demonstrates a serious investment in the building itself, as evidenced in the structural solution and the way it starts to tie together the civic center of downtown Long Beach."

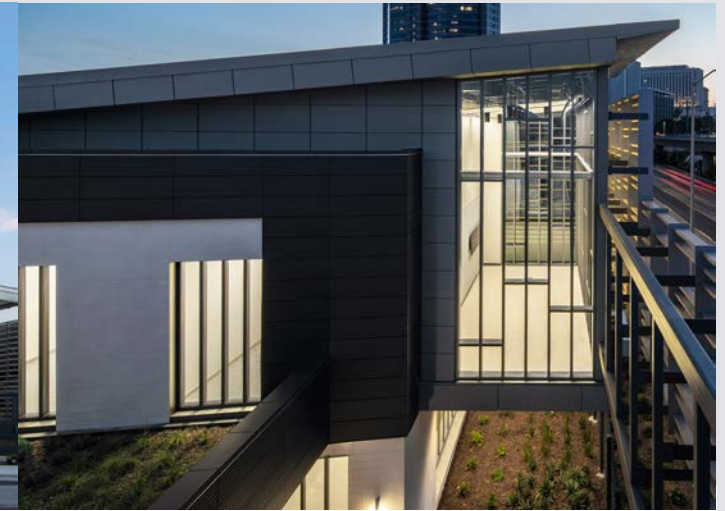
20
21

Westside Prize & DESIGN AWARDS

HONOR

PUBLIC /
INSTITUTIONAL

WESTSIDE
URBAN
FORUM



BUS MAINTENANCE AND OPERATIONS FACILITY (BUILT)

Architect & Interior Designer: GGA Architecture+
Owner: Los Angeles Department of Transportation
Developer: City of Los Angeles
Landscape Architect: AHBE/MIG
Structural Engineer: Englekirk Engineers
Civil Engineer: Rick Engineering

M/E/P Engineer: Syska Hennessey
General Contractor: Sinanian Development
Transportation Planning: IBI Group
LEED Consulting & Commissioning: Roshanian & Associates
Photography: Paul Vu Photography

JURY NOTES:

"This is an example of how you can make a service facility into something much, much more. It's impressive, it demonstrates that it's worth the investment to build better civic buildings. The use may not be glamorous, but it's still worthwhile to do it right."

"The site was not without its complexities; they talk about the process of cleaning, rehabilitating the land, and turning a brownfield into a carbon-neutral, energy-generating facility. This is the kind of project that we need much more of. When you make that kind of investment it pays you back in the long run in so many ways."

"It shows that as a society and a city we value our public transportation and the infrastructure that we need to make it all work."

20
21

Westside Prize & DESIGN AWARDS

MERIT

OFFICE

WESTSIDE
URBAN
FORUM



9735 WASHINGTON (IN-PROCESS/UNBUILT)

Architect & Interior Designer: Abramson Architects

Owner/Developer: PGIM Real Estate, DLJ Capital Partners,
Clarett West Development

Landscape Architect: LA Group / Cactus Story

Structural Engineer: JLA Structural Engineers

Civil Engineer: Fuscoe Engineering

M/E/P Engineer: REX

General Contractor: Morley Construction Company /
Benchmark Contractors, Inc.

Façade Fabricator: Arktura

Renderings: Unmarked Studio

JURY NOTES:

"This office project is responsive to its environment. It fits in the urban fabric, it scales nicely to what's around it. For an office, this project is doing everything right. It's located in the center of the city, it's close to transit, it's got great store frontage."

"There's daylight penetrating all the way through the building. This is what you would want a creative office developer to do. If the deck on the roof will be accessible to the public, that would be fantastic."

"There's a nice environment up on the roof. It's important to get office space and creative companies to come into the more connected parts of the city, into the walkable environments, and be connected to transit."

20
21

Westside Prize & DESIGN AWARDS

CITATION

OFFICE

WESTSIDE
URBAN
FORUM



2910 NEBRASKA (BUILT)

Architect & Interior Designer: Blue Point Architecture

Owner/Developer: The Winter Garden

Landscape Architect: Blue Point Architecture

Structural Engineer: Efficient Consulting Engineers

Mechanical Engineer: Fruchtmann and Associates

Electrical: Biabani and Associates, Empowered Engineering Group

Plumbing: PV&C Plumbing

General Contractor: Collaborative Construction

Photography: Blue Point Architecture

JURY NOTES:

"This could have been an easy building to just knock down and start over, but the idea of embodied energy and deciding to work with the existing building is what's really interesting."

"The West Side has a little bit of everything, due in part to manufacturing and the airport, so it's great to see how a lot of it is being repurposed. This is part of that narrative."

"They did a very simple project – while also doing something that was a little unusual. It speaks to the theme of repurposing and doing it in an interesting way. This is a good renovation of a mid-century building."

20
21

Westside Prize & DESIGN AWARDS

CITATION

OFFICE

WESTSIDE
URBAN
FORUM



HARLOW (BUILT)

Owner/Developer: Hudson Pacific Properties

Executive Architect: House & Robertson Architects, Inc.

Design Architect: RIOS

Landscape Architect: RIOS

Interior Designer: RIOS

Structural Engineer: Glotman Simpson Structural Engineers

Civil Engineer: KPFF Consulting Engineers

M/E/P Engineer: ARC Engineering

General Contractor: McCormick Construction

Sustainability: Verdical Group

Geotechnical: Geotechnologies

Elevator: HKA Elevator Consulting

Photography: Hudson Pacific Properties

JURY NOTES:

"We love when there's a clear understanding of the roof as a second skin. Here they've used it to create shaded outdoor spaces, and there's a sort of the solidity of the one end that morphs into something that's more transparent."

"There's a 'showing the bones,' which creates a certain dynamism about it. They treated each of the elements and elevations in a unique way, while still integrating them into the overall design."

"It has a coherency about it and that outdoor amphitheater is fantastic."

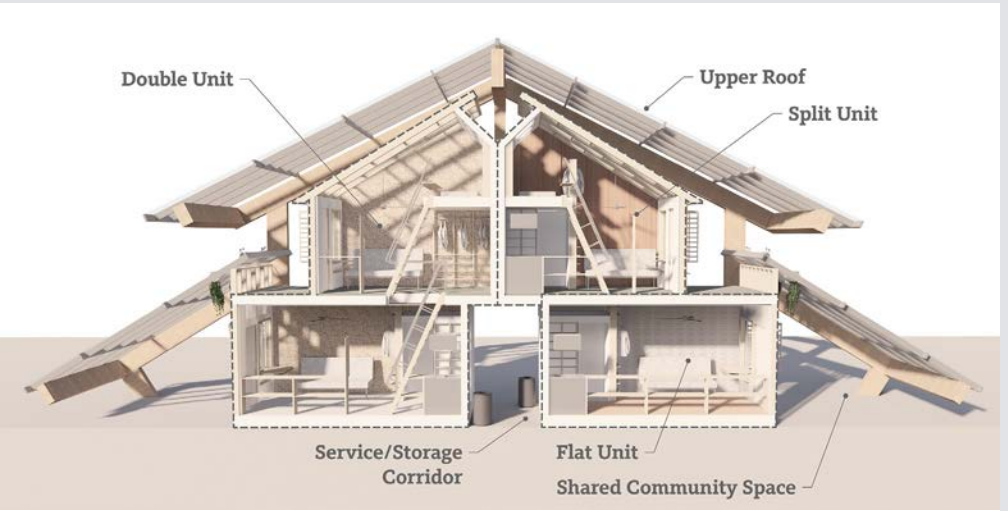
20
21

Westside Prize & DESIGN AWARDS

HONOR

MULTI-UNIT HOUSING

WESTSIDE
URBAN
FORUM



URBAN AWNING (IN-PROCESS/UNBUILT)

Architect: Gensler

Owner/Developer: Gensler + Gilmore Associates

M/E/P Engineer: Affiliated Engineers

Construction: United Brotherhood of Carpenters and
Joiners of America

Cost Estimator: Cumming Corporation

Renderings: Gensler

JURY NOTES:

"A really innovative project. Very small units that feel voluminous for their square footage. They have a bigger space feel; larger psychological space, and it creates a new level of density."

"We like that the units themselves are prototypes. A different typology for these types of housing units – they're both communal and individual, allowing for variations and repetitions."

"Really quite unique and a good, alternative city solution to providing housing - particularly for transitional populations. We also appreciate the site planning with buildings intersecting and creating a balance of positive and negative space. It's extraordinary."

20
21

Westside Prize & DESIGN AWARDS

MERIT

MULTI-UNIT HOUSING

WESTSIDE
URBAN
FORUM



PATH METRO VILLAS (BUILT)

Architect: KFA Architecture

Owner/Developer: PATH Ventures

Landscape Architect: Phase 1 - Land Images
Phase 2 - AHBE

Structural Engineer: Englekirk Engineers

Civil Engineer: KPFF Consulting Engineers

M/E/P Engineer: ME Engineers

General Contractor: Walton Construction

Photography Phase 1: Jim Simmons Photography

Phase 2 : Adrian Tiemens Photography

Photography Phase 1 & 2 Drone: ArchLenz Photography

JURY NOTES:

"You've got to love this one with its wide open courtyards. It's hard for a developer to give up that much space, but that's one of the things that gives this project a much more dynamic quality."

"There's a true three-dimensional aspect of it, touching the ground nicely, it seems connected, and it's clear that its spaces will get a lot of use."

"A very impressive project that has a lot to look at."

20
21

Westside Prize & DESIGN AWARDS

MERIT

MULTI-UNIT HOUSING

WESTSIDE
URBAN
FORUM



WILSHIRE & LA JOLLA TOWER (IN-PROCESS/UNBUILT)

Architect: Steinberg Hart

Owner/Developer: WS Communities, Inc.

Landscape Architect: RELM

Structural Engineer: Nabih Youssef Associates Structural Engineers

Civil Engineer: KPFF Consulting Engineers

Mechanical Engineer: Limbach

Electrical Engineer: A.J. Kirkwood & Associates, Inc.

Plumbing Engineer: Murray Company

General Contractor: Gilbane

Signage: SKA Design

Acoustical: Salter, Inc.

Roofing: Allana Buick & Bers, Inc.

Waste Management: American Trash Management Inc.

Code & Fire Protection: Simpson Gumpertz & Heger

Waterproofing: Allana Buick & Bers, Inc.

Elevator: Edgett Williams Consulting Group

Pool: Aquatic Design Group

Façade Access: Olympique

Geotechnical Consultant: GeoDesign, Inc.

Methane Consultant: Terra-Petra, Inc.

Renderings: Steinberg Hart

JURY NOTES:

"Here there's definitely been an investment in the facade that's appropriate for Wilshire Boulevard. They really worked with the skin and did something with it."

"The amenity deck is great, and there's a lot of depth in the facade with the undulating balconies. It does a nice job of fitting into the street."

"There are two rows of sidewalk spaces and landscaping that would provide a good buffer for the traffic. Looks like it has a nice entry lobby, and it's not far from where future transit is going to be."

20
21

Westside Prize & DESIGN AWARDS

CITATION

MULTI-UNIT HOUSING

WESTSIDE
URBAN
FORUM



LLEWELLYN APARTMENTS (BUILT)

Architect: KFA Architecture

Owner/Developer: Trammell Crow Company

Landscape Architect: Duane Border Design

Interior Designer: CDC Designs

Structural Engineer: VA Structural

Civil Engineer: Fuscoe Engineering

M/E/P Engineer: Donald Dickerson Associates

General Contractor: T.B. Penick & Sons

Drone Photography: Jun Tang Photography

Ground Photography: David Guettler Photography

JURY NOTES:

"This gets the density award. Thank goodness we're getting dense housing happening. "

"It's in the right place, it has nice amenities, and it's developing an area that makes sense. It's adjacent to the Metro station, there's the park right next to it, and in so many ways it's a very livable environment."

"We also enjoyed the number of inner courtyards."

20
21

Westside Prize & DESIGN AWARDS

CITATION

MULTI-UNIT HOUSING

WESTSIDE
URBAN
FORUM



PACIFIC LANDING (IN-PROCESS/UNBUILT)

Architect: Patrick TIGHE Architecture

Owner/Developer: Community Corporation of Santa Monica

Landscape Architect: Yael Lir Landscape Architects

Structural Engineer: NOUS Engineering

Civil Engineer: DK Engineer, Corp.

M/E/P Engineer: Idiaz Design, Inc.

General Contractor: Walton Construction Inc.

Lighting Engineer: eSquared Lighting

Sustainability: Raimi Associates

Sustainability: Partner Energy

Geotechnical: Terradyne

Waterproofing: Terra-Petra

Acoustic: DBF Associates

Renderings: TIGHE Architecture

JURY NOTES:

"A 100% affordable housing project that deserves recognition."

"It looks like it connects to the street well, it's dynamic, with movement through the floors by having those walkways. A unique structural idea that creates a new type of space."

"This kind of project is really hard to do; they take a long time, the financing is difficult, and the community is involved on many levels. So, to get to have a building that is this interesting be accepted and move forward is very exciting."

20
21

Westside Prize & DESIGN AWARDS

HONOR

MIXED-USE

WESTSIDE
URBAN
FORUM



DISTRICT NOHO (IN-PROCESS/UNBUILT)

Master Landscape Architect: RELM

Master Plan Architect & Architect for Towers 1,2, & 5: HKS

Architect for Residential Blocks 3, 4, & 7: KFA Architecture

Retail & Office Architect: Gensler

Developer: Trammell Crow Company

Owner: LA Metro & Trammell Crow Company

Civil Engineer: KPFF Consulting Engineers

Traffic: Kimley Horn

Lighting Design: HLB

Graphic Design & Branding: Altitude Design Office

Renderings: RELM + Biyan

JURY NOTES:

"This project is daring. The ground level is fantastic, breaking up all the dense, surrounding towers. "

"It achieves a very high level of sophistication that you don't often see in North Hollywood. Tying together the Metro hub, with the other bus lines coming in, this is significant."

"Someone really went for it here. They tried to put the urban grid back together, while keeping mobility and making it pedestrian-centric. This one literally rises to the top in terms of innovative urbanism."

20
21

Westside Prize & DESIGN AWARDS

MERIT

MIXED-USE

WESTSIDE
URBAN
FORUM



LAS PALMAS MODULAR HOUSING (IN-PROCESS/UNBUILT)

Architect: Steinberg Hart

Owner/Developer: Relevant Group

Landscape Architect: SALT Landscape Architects

Structural Engineer: Englekirk

Civil Engineer: DKE Engineering

M/E/P Engineer: GreenMEP

Renderings: Auroia

JURY NOTES:

"This is good, compact urban infill in a neighborhood that's pretty dense already. It adds to that, and looks like it will be a cool place to live."

"They've broken up the massing in the middle, creating a type of courtyard and a breezeway that connects through to The Egyptian Theater. That component is interesting."

"This particular version of modular looks like it can really be done, as opposed to some projects which are modular that look like they're trying to force the modules."

20
21

Westside Prize & DESIGN AWARDS

MERIT

MIXED-USE

WESTSIDE
URBAN
FORUM



MILLENNIUM EAST VILLAGE (BUILT)

Design Architect: Michael W. Folonis Architects

Executive Architect: Cuningham

Owner/Developer: The Dinerstein Companies

Landscape Architect: AHBE MIG

Interior Designer: Ariel Fox Design

Lighting Designer: The Ruzika Company

Structural Engineer: VCA Engineers

Civil Engineer: KPFF Consulting Engineers

M/P Engineer: TAD Consulting, Inc.

Electrical Engineer: Candela Engineering

General Contractor: DMC Raven Construction Inc.

Consultants: US Eco Logic LEED Consultants

Photography: Art Gray Photography

JURY NOTES:

"We really like this one. It's taken a high-density, fairly conventional typology and made something a lot more interesting out of it."

"There's a lightness to it that's really wonderful. It's reminiscent of Europe with its wonderful little internal alley spaces. That is placemaking."

"It's a good balance between the stiff, traditional multi-family residential typology and the creation of nicely scaled spaces in between. Really well done, and especially so where the building ends and meets the street. It has a fantastic façade that's really beautiful."

20
21

Westside Prize & DESIGN AWARDS

MERIT

MIXED-USE

WESTSIDE
URBAN
FORUM



WEST EDGE (IN-PROCESS/UNBUILT)

Architect: Gensler

Residential Architect: Togawa Smith Martin

Owner: Hines, USAA Real Estate, Philena Properties

Developer: Hines

Landscape Architect: RIOS

Structural Engineer: John Labib & Associates

Civil Engineer: KPFF Consulting Engineers

M/E/P (Office): MEYERS+ ENGINEERS

M/E/P (Residential): Green MEP Engineering Consulting

General Contractor: W.E. O'Neil Construction

Planning Consultant: PSOMAS

Lighting Consultant: Francis Krahe & Associates, Inc.

Renderings: Gensler

JURY NOTES:

"This is the right project for the right place. There's a sort of anti-pedestrian feeling to that neighborhood and this cuts against that. It makes the street life interesting, and it's great to have a little breathing space there."

"Urbanistically this is a really good project. There's an intensity about the ground level activity that's intentional. It's got a lot of density and a lot of the ground level has been given over to the public."

"Being right near the Metro station means you can walk to Trader Joe's, you can walk to transit, and there's a mix of family-friendly housing in there."

20
21

Westside Prize & DESIGN AWARDS

CITATION

MIXED-USE

WESTSIDE
URBAN
FORUM



501 COMPTON (IN-PROCESS/UNBUILT)

Architect: GGLO Design

Owner/Developer: KBK Enterprises

Landscape Architect: The Arroyo Group

Civil Engineer: JMC2 Civil Engineering

Planning Consultants: The Arroyo Group

Renderings: GGLO Design

JURY NOTES:

"The density here is very successful."

"We like that it mixes affordable housing with market rate and that it's helping to create a community. Specifically, a community that would be natural to Compton - without gentrifying it, but improving it. That intention is important."

"We like the planning, and the Z shape across the site that creates two courtyards on either side."

20
21

Westside Prize & DESIGN AWARDS

HONOR

HOSPITALITY

WESTSIDE
URBAN
FORUM



ROBERTSON LANE HOTEL (IN-PROCESS/UNBUILT)

Executive Architect: HKS Architects

Design Architect: HKS Architects / Hodgetts + Fung (Initial Entitlements)

Owner: Robertson Court, LLC

Developer: Faring Capital

Landscape Architect: OJB

Interior Designer: Lisa Koch Design

Structural Engineer: Englekirk

Civil Engineer: KPFF Consulting Engineers

M/E/P Engineer: ME Engineers

Historic Architect: Architectural Resources Group

Renderings: Fancy CG/Visualhouse

JURY NOTES:

"This project is beyond a hotel - it's showing how a hotel should be integrated into a city. We love how they have achieved a very clever urbanistic move that brings together a logical and welcoming connection across the site into areas that make sense."

"A great way and a great place to walk. The integration and restoration of the historic structure is done respectfully, and that is laudable. This is the kind of project we want to encourage developers to do. It really responds to, enhances, and integrates with the urban fabric in a wonderful way."

"It's like a nice piece of city that they put down there. It will be useful and enhance the lives of people who come in contact with it. A place where you could walk for hours, enjoy, and be a part of a good environment."



is proud to support

The Westside Urban Forum

and congratulates this year's
award winners and honorees

Patrick Amos
Senior Vice President
patrick.amos@cbre.com
+1 310 550 2594

1840 Century Park East, 9th Floor
Los Angeles, CA 90067

Congratulations Awardees!

Thank you for your leadership,
excellence, and lasting impact on
the spaces where we work & play.



Energy efficiency compliance, consulting,
and construction firm based in Santa Monica.

greeneconome.com (424) 422-9696 info@greeneconome.com

**KFA RESHAPES LA BY DESIGNING
GREAT PLACES WHERE
PEOPLE FLOURISH.**



ARCHITECTURE / FOR LOS ANGELES



KFA Music Video

3573 Hayden Avenue, Culver City, CA 90232
310.399.7975 | kfalosangeles.com | [@KFALosAngeles](https://www.instagram.com/KFALosAngeles)

REIMAGINING NOW.
TO CREATE WHAT'S NEXT.



LOS ANGELES • SILICON VALLEY • SAN FRANCISCO • SEATTLE

HudsonPacificProperties.com



Designing places
for people to thrive

City of Los Angeles
LADOT Bus Maintenance Facility
LEED PLATINUM

GGN
+

Next stop:
vibrant
communities.

Metro is redefining the role of a transit agency, leveraging transportation investments to strengthen our communities for a more equitable, sustainable region.

Find out more at metro.net/toc.



Thank You Westside Urban Forum Event Sponsors!



Thank You Annual Westside Urban Forum Sponsors!

akerman

HKS

JERDE

KOA

HR&A

LOWE

IMPACT
SCIENCES

SWINERTON



COX CASTLE
NICHOLSON

ARC Document Solutions®

HELMS
BAKERY
DISTRICT

WALTER N.
MARKS
INCORPORATED
REALTORS



**20
21**

**Westside Prize
& DESIGN AWARDS**

**WESTSIDE
URBAN
FORUM**

Westside Urban Forum thanks our guests, members, year-round and event sponsors, and monthly panelists for their support and for their ongoing participation in the quest to make the Westside a more vibrant, equitable, and sustainable community.

WestsideUrbanForum.com

info@westsideurbanforum.com