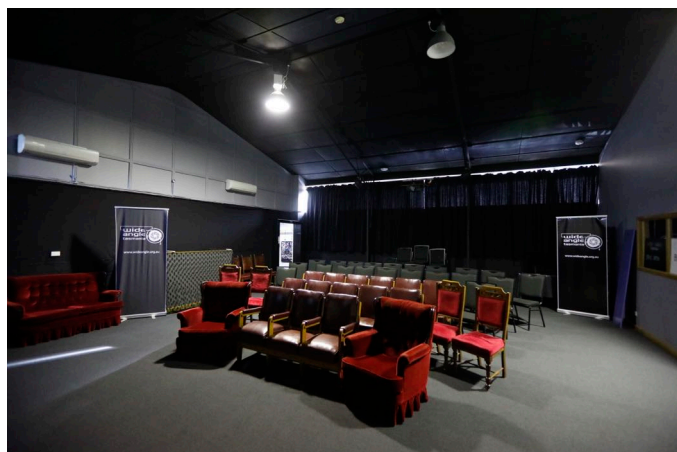




cinema / studio / workshop



cinema/studio

The cinema/studio space is ideal for workshops, film screenings, rehearsals or studio space to shoot a film.

Measuring approximately 10 by 10m, with a high ceiling, the space can accommodate up to 70 people in cinema seating and is ideal for 25 people in workshop seating.

The cinema/studio can be configured for rear projection (ideal for film screenings) or controlled from the front for presentations, workshops or lectures.

A quality PA system is available to compliment the stereo sound system and lights are easily dimmable.

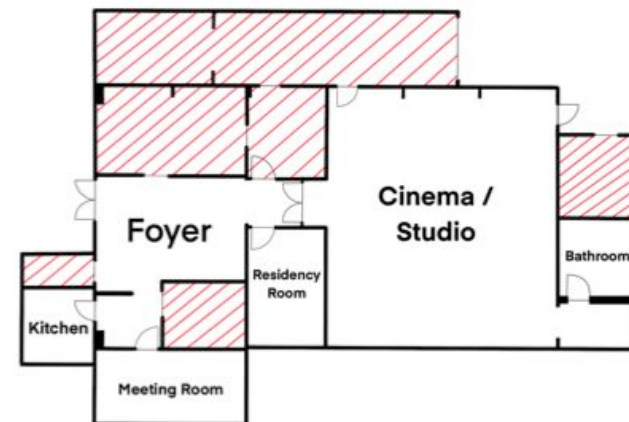


meeting room

The meeting room is a great space for small meetings of up to 10 people. It can also be used for screen tests, rushes viewings or a break out room for workshops.

The room can include a 55 inch 4K OLED TV, and a large whiteboard. It's a sunny warm and inviting space right next to the kitchen.

floor plan



**WIDE ANGLE
SCREEN CENTRE**
6 Washington St, South Hobart
info@wideangle.org.au
(03)6223 8344



foyer

The foyer is a welcoming through-space that serves as an entry point for visitors and a break out space for serving tea, coffee or lunch during workshops. For evening events the foyer can be used for selling tickets and bar service.

kitchen

A functional kitchen provides hirers with access to fridges, microwave, kettles, urns, oven, stove and sink. Speak with us about your needs - we have plenty of platters, trays, mugs and glassware available to hire for events.



rates

The basic hire package is an ideal option for those who are keen to keep their costs low by managing everything for themselves. It's affordable because we haven't added in costs for setting up, staff, cleaning or extras.

The basic hire package includes:

- A half-hour pre-hire induction to use the venue and tech-check media
- wifi
- gst

Basic rate	Hourly	Half day (under 4 hours)	Daily (over 4 hours)
Studio space (for rehearsals/ film shoots etc) Does not include access to the projector or audio systems	30	100	150
Cinema/workshop space includes access to projector, screen, laptop, PA and audio systems, tables and chairs	50	150	200
Meeting Room	15	50	70

WAT MEMBERS RECEIVE 30% OFF THE RATES LISTED

If you would rather just turn up, enjoy the event and leave, we're happy to arrange staff and can provide a quote for additional services and facilities including:

- event staff (AV technician, front of house, bar staff, cleaning, set-up/pack down, security)
- Insurance
- catering
- catered and stocked bar
- PA speaker system
- glassware



about hiring

If you are interested in having a look at the venues you are welcome to visit - weekdays between 10am and 4pm. You can call or email to make a booking - bookings will be confirmed once we have received a completed application form and payment.

Hirers will generally need public liability insurance. Wide Angle may be able to assist individuals who do not have this insurance... just ask!

As we are located in a residential area, our opening hours are neighbour friendly:

- 10am - 8pm Sunday - Thursday
- 10am - 10pm Friday and Saturdays

Unfortunately the Centre is not wheel-chair accessible due to the small step at the front and rear entrances.

about us

Wide Angle Tasmania encourages, develop and supports Tasmanian screen practitioners. The Centre is designed to provide the community with a place to meet, share and make. Find out more and sign up for our newsletter

www.wideangle.org.au