

Oregon Natural Desert Association

2021 Stewardship Season



2020 changed everything!

Group stewardship trips



The opportunity

Photo by Sage Brown

The opportunity

Photo by Sage Brown

The opportunity

Photo by Sage Brown

Planning phase



Photo by Sage Brown

***approximate image of my brain trying to think through and automate the systems**

Photo from bmc.com



Protected: ODT Photo Monitoring

This content is password protected. To view it please enter your password below:

Password:

ENTER



Protected: ODT Photo Monitoring

[Project Description](#)[Project Details](#)[Access](#)[Tools you will need](#)[Materials to print and take](#)[Photo Monitoring](#)[Reporting and Data Uploads](#)[Bring your Family](#)[Desert Bathing](#)[Know Before you Go](#)[Safety](#)[COVID](#)[Read this last](#)

An ONDA initiative since 2011, the 750-mile Oregon Desert Trail traverses some of the most spectacular natural areas of the state's dry side, including Hart Mountain National Antelope Refuge, Steens Mountain, and the Owyhee Canyonlands. While we have surveyed every inch of the route in crafting the Oregon Desert Trail, it remains a work-in-progress.

About 35% of the 750 miles of the Oregon Desert Trail involve cross country travel in the sagebrush sea; hikers will navigate these sections with map and compass or gps devices. We direct hikers to avoid making impacts on cross country sections, and instead of following footprints, to hike in a similar bearing. The goal is to avoid creating "trail" by having people on the landscape walking in the same alignment over and over; we want intact habitats and ecosystems to be the primary importance out there...and to help hikers understand how to travel without creating impacts.

2021 is the fourth year for this project. Photo monitoring in the same locations over time will help us gauge hiker-related impacts, and help us to get in front of any issues that might occur, primarily at water cache locations and areas of cross country travel in "pinch points" on the landscape that might funnel hiker traffic.



VOICES

Cregg Lange, member
since 2009



FACT

Young Horny Toad
Lizard



Next: Automate as much as possible

Please fill out this form to indicate your interests and availability for ONDA's Independent Stewardship Program in 2021.

Allow about 12 minutes to complete all the information; the form can be saved and returned to.

You will need to complete all four sections: 1) your information, 2) participation waiver, 3) COVID-specific protocols, 4) volunteer skills/preferences.



First Name *	<input type="text"/>	Nickname	<input type="text"/>
Last Name *	<input type="text"/>		
Mailing Address *	<input type="text"/>		
City *	<input type="text"/>		
State *	<input type="text" value="Please select"/>		

Do you have access to a high clearance 4WD vehicle for monitoring projects? *

Please select... ▼

Are you comfortable driving on rough, remote 2-track roads for monitoring projects? *

Please select... ▼

How many days are you willing to spend on a monitoring project? *

Please select... ▼

What type of camping are you willing to do for monitoring work? *

Please select... ▼

Are you willing to backpack for monitoring work? *

Please select... ▼

How far are you willing to hike for a monitoring project? *

- ☐ 1-5 miles
- ☐ 6-10 miles
- ☐ 11-19 miles
- ☐ 20+ miles, the longer the hike the better
- ☐ I don't want to hike. Vehicle-based monitoring/stewardship only please.



Project Details

Please fill out this information as it applied to your project. ONDA staff may have provided you with some of this information already, or explained what information we would want to know for this section of the reporting form.

Many fields will not apply to your project, please leave them blank.

Acres Monitored

Acres Juniper Removed

Acres Weeds Removed

BDAs Installed

Exclosures Installed

Leks Monitored

1		Spring	Summer	Fall	Winter	short notice?	Public Lands Monitoring projects	Recreation/ Trails projects	Uplands projects	Riparian projects	Wildlife monitoring	Volunteer from home	I'll do anything	Access to 4wd vehicle	Comfortable on rough roads	1-2 days	3-5 days	6+ days	I don't want to camp	Car camping only	Backcountry camping only	Backcountry camping acceptable	Either	Willing to backpack?
204	r	x	x	x		TRUE	x	x	x	x	x		x	TRUE	TRUE		x			x				FALSE
205	r																							
	r	x	x	x	x	TRUE	x	x	x	x	x			TRUE	TRUE		x						x	TRUE
206	r	x	x	x	x	TRUE	x	x	x	x	x		x	TRUE	TRUE		x			x				TRUE
207	r																							
	r	x	x	x		TRUE	x	x	x	x	x		x	FALSE	FALSE		x			x				FALSE
208	r	x	x	x		FALSE	x	x	x	x	x			FALSE	TRUE		x						x	TRUE
209	r	x	x	x	x	FALSE	x	x	x	x	x		x	FALSE	TRUE			x					x	TRUE
210	r	x	x	x		TRUE	x	x	x	x	x		x	TRUE	FALSE		x						x	TRUE
211	r	x	x	x		TRUE	x	x	x	x	x		x	TRUE	TRUE		x			x				FALSE



Your work in February & March:

22 volunteers contributed to early-season harvesting, Oregon Desert Trail monitoring, and Lek monitoring. ** *Your volunteer contributions will be counted when you fill out the report following your trip, and will make you eligible for the raffle.*

- 434 total volunteer hours contributed
- 1 lek monitored
- over 5,000 plants harvested
- 5 Oregon Desert Trail locations monitored

In your words:

"Juniper Mountain area was beautiful to explore! We hiked to the top of Juniper Mountain for spectacular views. We saw bluebirds on a Bluebird Day!" Karen Lillebo

"It was so beautiful and quiet camping. I was out for three days due to a dead battery and had time to enjoy and really get a feeling for the sand dunes and lost forest." Pete Pennington

Photo by Jim Davis

Each month all volunteers who contributed to an ONDA project will be entered to win these fabulous prizes from some of our business members. Your completed project report is an automatic entry for this monthly drawing. **Fill out your report now.**



LISTEN

Great Horned Owls
and Western Screech
Owls



WATCH

The Last Darkness



WATCH

Stewardship Fence
Building Timelapse



LISTEN

Great Horned Owls
and Western Screech
Owls





Juniper Mountain area was beautiful to explore! We hiked to the top of Juniper Mountain for spectacular views. We saw bluebirds on a Bluebird Day!" Karen Lillebo

"It was so beautiful and quiet camping. I was out for three days due to a dead battery and had time to enjoy and really get a feeling for the sand dunes and lost forest." Pete Pennington

Photo by Jim Davis

Each month all volunteers who contributed to an ONDA project will be entered to win these fabulous prizes from some of our business members. Your completed project report is an automatic entry for this monthly drawing. **Fill out your report now.**



Drawings will occur during the first week of each month, and include goodies from ONDA, Backporch Coffee, Miir,

WATCH
Stewardship Fence
Building Timelapse



LISTEN
Great Horned Owls
and Western Screech
Owls



WATCH
The Last Darkness

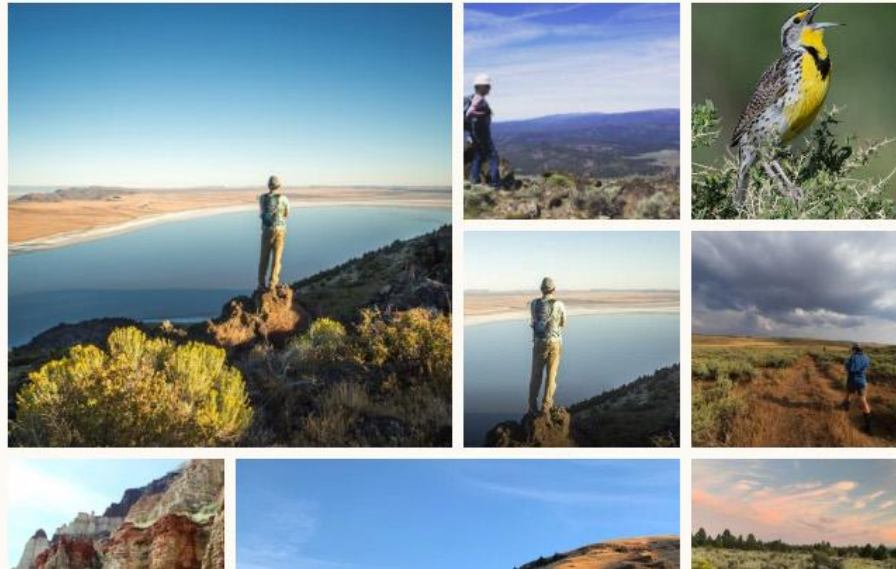


WATCH
Stewardship Fence
Building Timelapse



And, if you are not already following ONDA's Instagram, head to [@theoregondesert](#) to join in the photo fun.

Show us your #independentONDA



LISTEN

Great Horned Owls
and Western Screech
Owls



WATCH

The Last Darkness



WATCH

Stewardship Fence
Building Timelapse



Implementation



Dear Jefferson,

Around this time of year, I start pining for the song of the meadowlark, one of my favorite signs of spring, and daydreaming about stewardship trips to cherished places in Oregon's high desert.

Are you daydreaming about getting out to the desert, too? [Sign up to become an ONDA Independent Steward](#), and we will give you all the tools to complete impactful work while you're out exploring the public lands that make Oregon's high desert so incredible.

Complete your Independent Stewards application today!

While ONDA's group stewardship trips continue to be on hold due to the pandemic, the need has grown for ONDA volunteers to do work on the ground to restore, monitor and advocate for the places we love.

Our goals for 2021 include:

- Planting over 12,000 native trees and shrubs along desert streams like Hay Creek and the South Fork Crooked River
- Inventorying proposed wild and scenic rivers from Steens Mountain to the Owyhee

Program to date



Photo by Jim Davis

Into the future

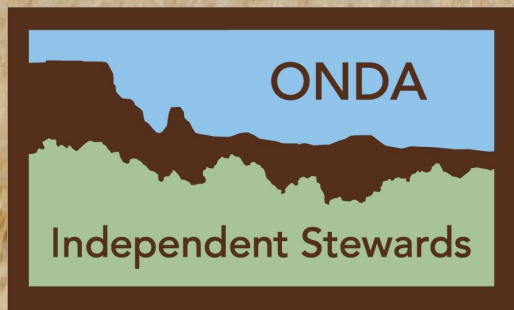


Photo by Sage Brown