

DONATE

I would like to make a:

- one-off donation
 continuing monthly donation

Monthly donors: By completing the form below, you authorise the Colong Foundation to debit your nominated account in accordance with the Direct Debit Services Agreement.

MY DETAILS

MR/MS/MISS/MRS/DR

ADDRESS

STATE POSTCODE

PHONE

EMAIL

DONATION AMOUNT:

\$50 \$100 \$200 \$500 \$1000

OTHER AMOUNT \$

PAYMENT METHODS

CHEQUE/MONEY ORDER

MAIL TO: Colong Foundation for Wilderness
201/332 Pitt Street
Sydney NSW 2000

ABN 84 001 112 143

CREDIT CARD

CHARGE MY: VISA MASTERCARD
 OTHER

DONATION AMOUNT \$

CARDHOLDER'S NAME

CARD NO

CARD EXPIRY DATE / CVV

CARDHOLDER'S SIGNATURE

DIRECT TRANSFER - EFT

ACCOUNT NAME: The Colong Foundation for
Wilderness Ltd

BSB: 032268

ACCOUNT NO: 117302

Please reference your donation for easy identification e.g. RiversSmith and email your details so we can send you a receipt.

ONLINE FACILITY

Use our website at wildrivers.org.au/donate to make a secure donation using PayPal or credit card.

Donations to the Colong Foundation over \$2 are Tax Deductible

Completed donation forms must be posted or emailed to:

Colong Foundation for Wilderness
201/332 Pitt St, Sydney NSW 2000

wildrivers@colongwilderness.org.au

SAVE THE BLUE MOUNTAINS WILD RIVERS

WILDRIVERS.ORG.AU



Visit our website to find out more at
wildrivers.org.au
Got a question? Email us at
wildrivers@colongwilderness.org.au

 [FACEBOOK.COM/BLUEWILDRIVERS](https://www.facebook.com/bluewildrivers)

 [@BLUEWILDRIVERS](https://twitter.com/bluewildrivers)

 [YOUTUBE.COM/BLUEWILDRIVERS](https://www.youtube.com/bluewildrivers)

SAVE SYDNEY'S WILDERNESS BACKYARD



WILD RIVERS

The wild rivers of the southern Blue Mountains form a landscape that has been largely untouched by modern society. The area is home to 48 threatened plant and animal species, ancient river valleys, rare dry rainforests and hundreds of Indigenous art and marker sites. The significance of the southern Blue Mountains landscape led it to being inscribed on the World Heritage List in 2000.

PRISTINE WILDERNESS

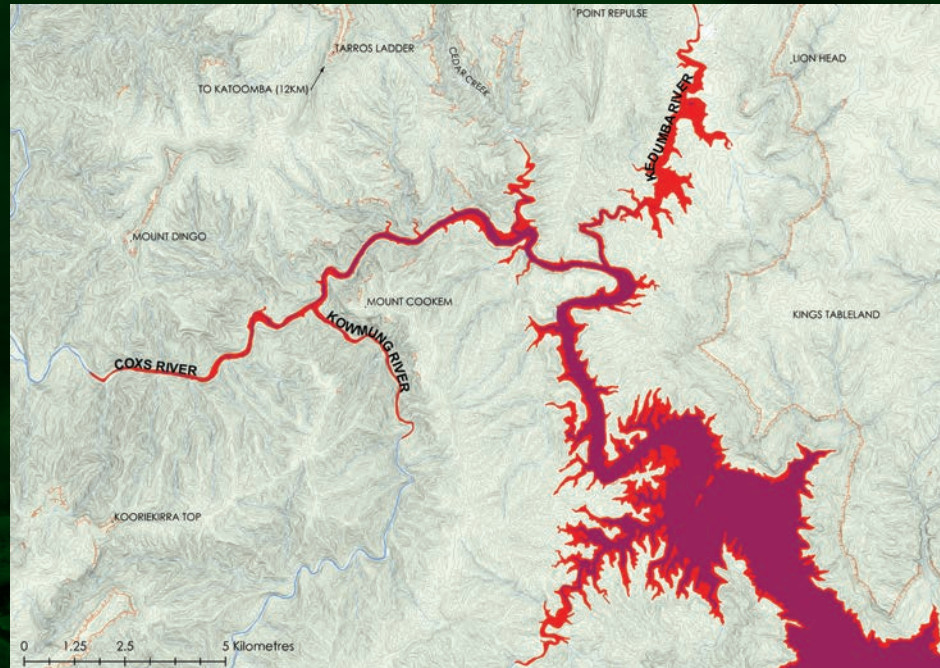
When Warragamba Dam was built in 1960, the rivers of the Warragamba valley were sacrificed to provide Sydney with clean drinking water. Legislators soon wanted to protect the environmental and catchment integrity of the unique wilderness areas surrounding the dam. Since 1960, the catchment has received National Park, Wilderness, National Heritage, Special Catchment Area, Wild Rivers and World Heritage protection. It is one of the most protected natural landscapes in Australia.



The wild Kowmung River

RAISING THE DAM WALL

In 2016 the NSW Government announced plans to raise Warragamba Dam wall by 14 metres - drowning 65 kilometres of wild rivers and 4,700 hectares of National Parks surrounding the dam. The dam wall raising is said to be for flood mitigation to justify new urban sprawl across 2,355 hectares of western Sydney floodplains.



Northern wilderness inundation impact

ENVIRONMENTAL DEVASTATION

The environmental devastation caused by raising the dam would see the lower Kowmung, Coxs, Nattai, Kedumba, Wollondilly and Little Rivers smothered beneath weed-infested dam mud. This would kill many plant and animal species that inhabit the wilderness area, including the vulnerable Camden White Gum and endangered Kowmung Hakea. Destroying a protected World Heritage site would be an international disgrace.



Present dam scarring



WHAT YOU CAN DO

- Sign the online petition at wildrivers.org.au/petition
- Spread the word amongst your friends
- Write a letter to the newspaper
- Make a Tax Deductible donation
- Volunteer your time to the campaign