

Ride at your own risk: Is public transportation a means of last resort for DC students?

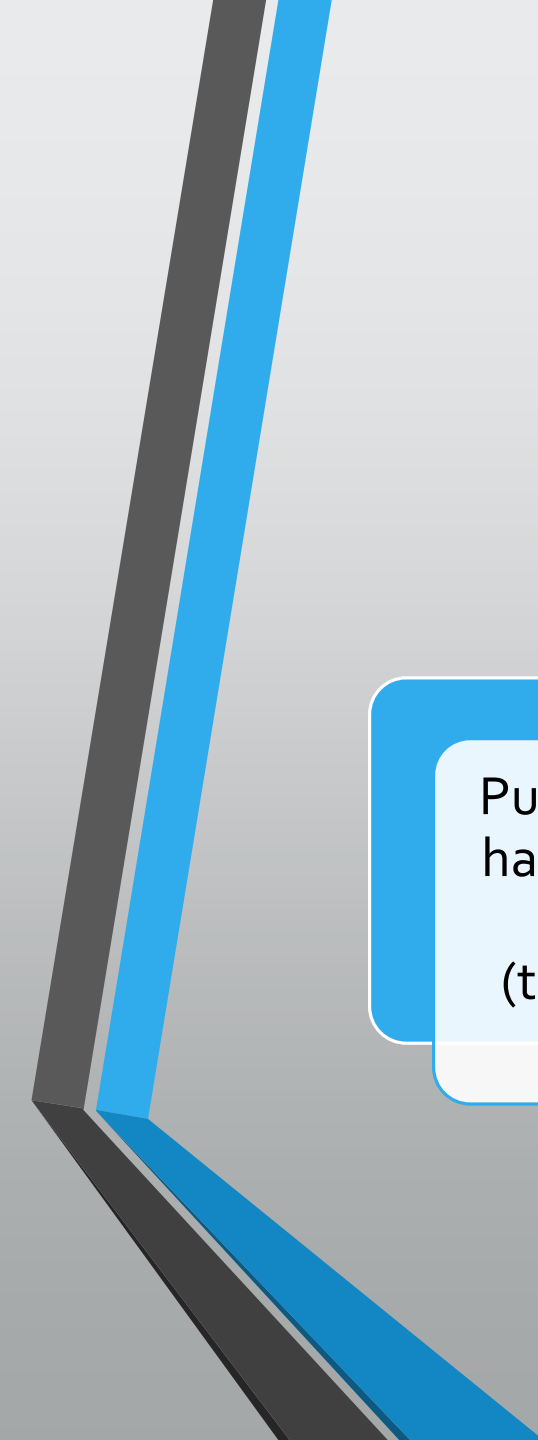
Maria McLemore

2019-2020 WTU Teacher Leader





Rationale



Public transportation
has become a barrier
to education
(tardiness, truancy,
school access)

Problems with public
transportation fall into
3 categories: safety,
reliability, accessibility

Explore the ways to
improve public
transportation for DC
students



Literature Review

39% of DC students travel up to an hour or more to and from school (Goncalves, 2019, para. 1)

Ninth grade students who live farther from their school are absent 2 or more days more than those who live closer to school (Blagg, Rosenbloom & Chingos, 2018, p. 16).

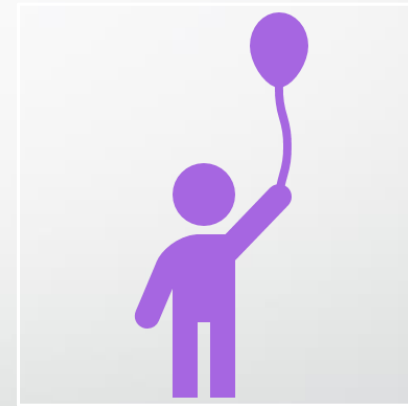
Educators and parents blame public transportation for absenteeism (Abamu 2018)



Reliability



60% of buses surveyed are running on time (Cort & Hill, 2019)



64% respect their scheduled headways (Cort & Hill, 2019)

Reliability



Bus routes are outdated; not accessible for newly developed areas nor at certain schools in Wards 7 & 8 (Mason et al., 2018)



There are not enough priority bus lanes (Mason et al., 2018)

Increase in violence at metro stations and bus stops(Stein 2019)

Students do not feel safe traveling to and from schools (Stein 2019)

During 2016-2017 academic school year, 84 DC schools experienced gun shots within 1000 feet of their school (Melgar 2019)

In 2019, 166 homicides occurred in the district, 12 of which were school age children and teenagers (Hermann et al., 2019)

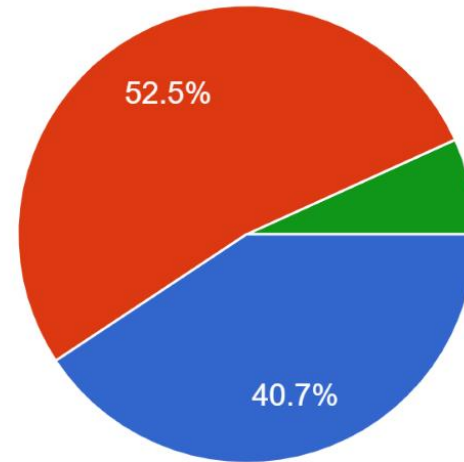
Safety



Data Methodology

What is your role in DC?

59 responses

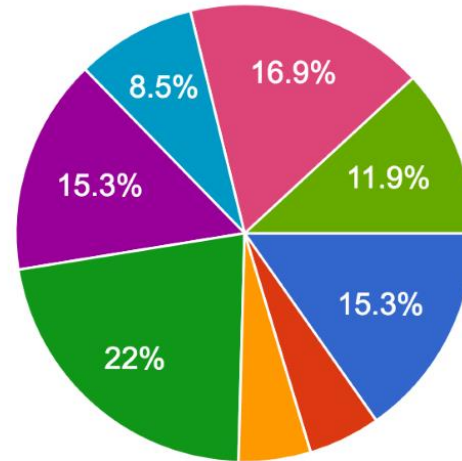


- Teacher
- Parent
- Administrator
- Other

What is your role?

In which ward do you live?

59 responses

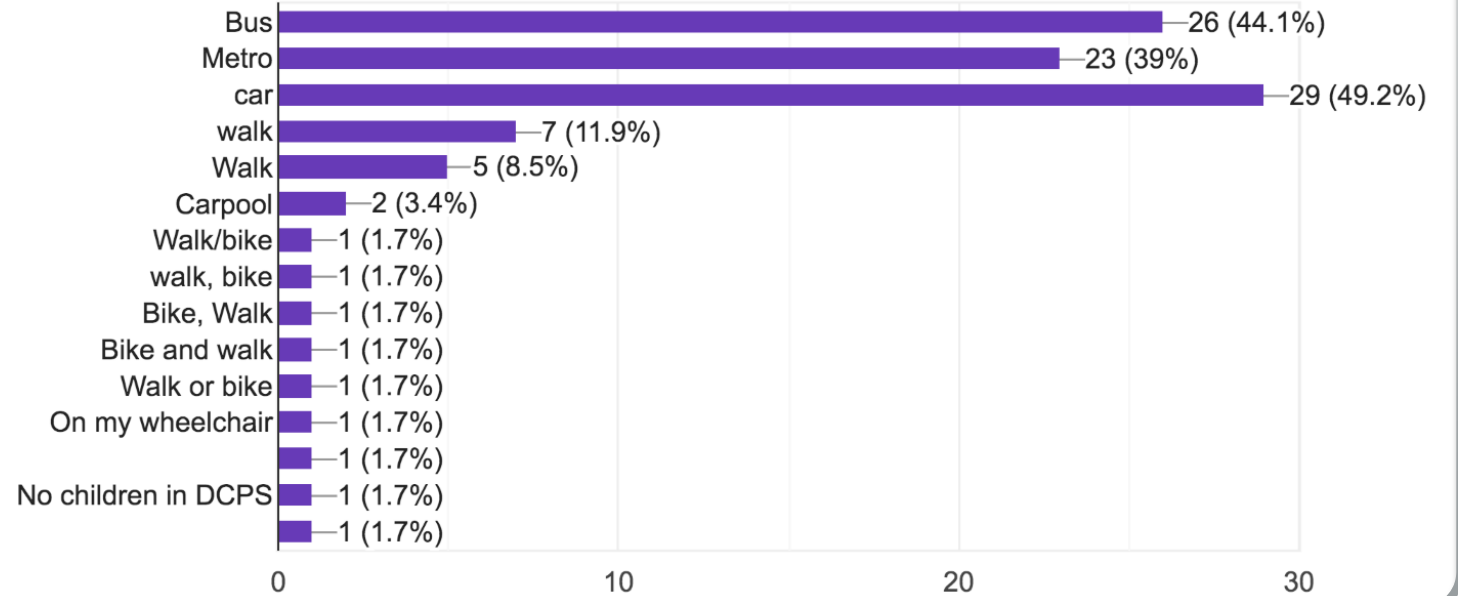


- Ward 1
- Ward 2
- Ward 3
- Ward 4
- Ward 5
- Ward 6
- Ward 7
- Ward 8

Where do you live?

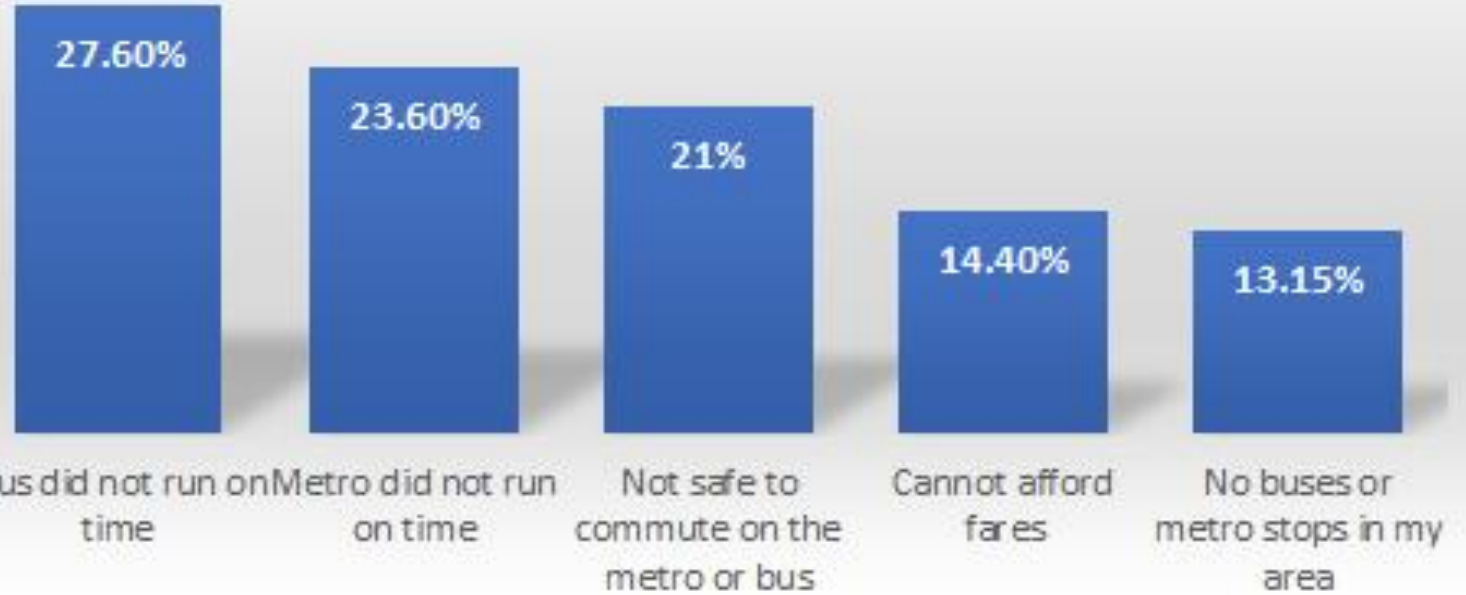
How does(do) your child (children) commute to school? (choose all that apply:)

59 responses



How DC Students Commute to School?

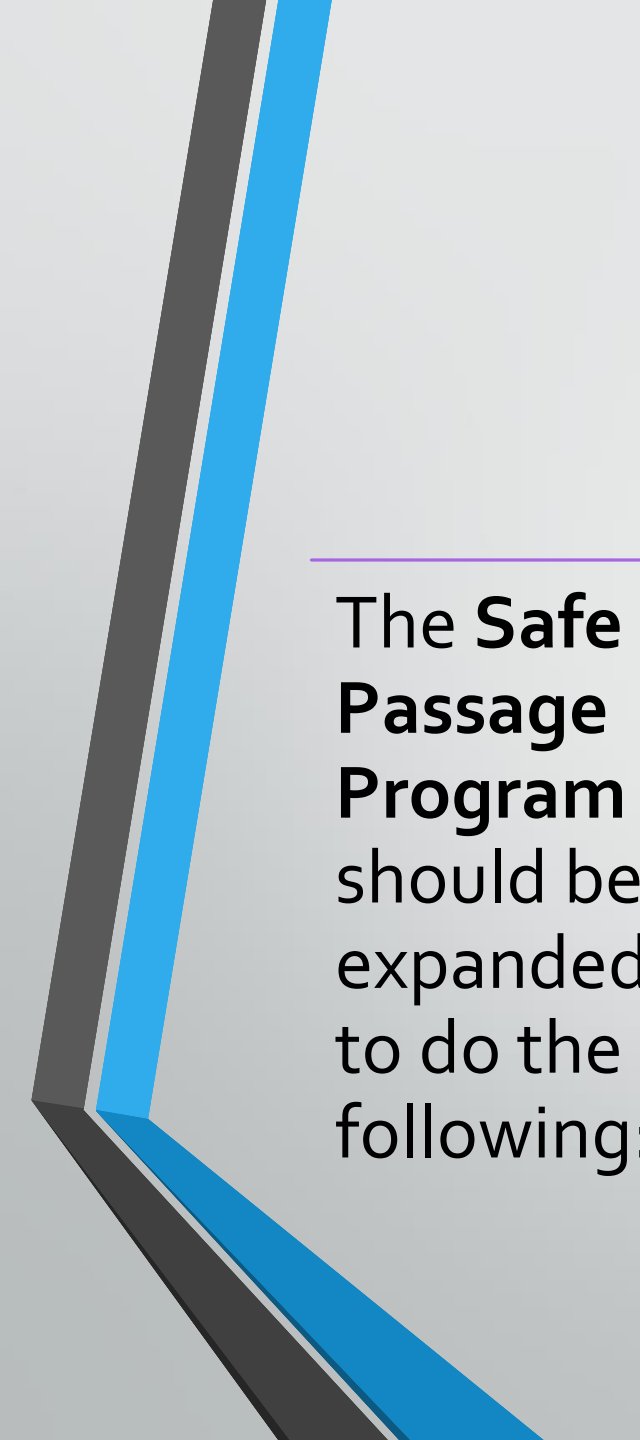
Transportation



Problems with Public Transportation



Recommendations



The **Safe Passage Program** should be expanded to do the following:

Include more schools in every Ward

Include a 'Safe Spot' in every Ward

Coordinated by DME

Based on the Safe Passage Program in Chicago, the policy should be changed so that violence disrupters can work directly with schools



1

Double the frequency of buses

2

Improve the headway service

3

Update routes and expand where the buses go

Reliability

DDOT and the District government should make infrastructure improvements

Install more bus stops, and traffic signs

Install Queue jumps at intersections

Reliability

Accessibility

Establish a discounted ride sharing program

Create a shuttle service with limited stops exclusively for students

Establish a parents ride free program for parents of elementary school students